



CHESTERFIELD
BOROUGH COUNCIL

Queen's Park Management Plan

2016-2026

Greenspaces Section Environmental Services,
Chesterfield Borough Council
Old Brickworks Lane,
Chesterfield, S41 7LF



Supported by the
Heritage Lottery Fund

Contents

Foreword.....	4
Acknowledgements.....	5
1. Introduction	7
2. Responsibility for the Plan	7
3. Location.....	7
3.1 Site Details	7
3.2 Site Address.....	8
4. Ward.....	8
4.1 Elected Members	9
5. Site Ownership, Leases, and Designations.....	10
5.1 Tenure.....	10
5.2 Leases and Agreements	10
5.3 Planning Designations and Legal Restrictions.....	11
5.4 Conservation Area Status.....	11
6. Site Attractions and Facilities.....	13
6.1 Access and circulation.....	15
7. A Welcoming Place.....	17
7.1 Current management system	17
7.2 Accessibility.....	19
7.3 Amenity Value.....	20
7.4 Education Value	20
7.5 Recreational Value	21
7.6 Sports, activities and play facilities	21
8. Healthy, Safe and Secure	23
8.1 Public Safety.....	23
8.2 Geese	24
8.3 Cricket Balls.....	24
8.4 Reporting Mechanisms	24
8.5 Tree reporting Regime	25
8.6 Water Courses.....	25
8.7 Security	26
8.8 Community Safety Partnership.....	26
9. Clean and Well Maintained.....	28

9.1	Grounds Maintenance	28
9.2	Existing Maintenance.....	29
9.3	Horticultural works	30
9.4	Hardworks, furniture and fencing.....	31
9.5	Vandalism and Graffiti Policy	32
9.6	Vehicle Management	32
9.7	Drainage.....	32
9.8	Service Information.....	32
9.9	Maintenance of Buildings and Structures.....	33
9.10	Building Cleaning.....	33
10.	Conservation of Heritage	34
10.1	Historic Relevance.....	34
10.2	Archaeological Relevance	37
10.3	Heritage Value.....	37
10.4	Views and Vistas	38
10.5	Entrances and Approaches	38
10.6	Water courses and Water bodies	42
10.7	Maintenance and inspection regimes.....	42
10.8	Condition Audits	42
11.	Community Involvement	43
11.1	The Friends of Queen’s Park	43
11.2	Events and Activities	44
11.3	Community Art.....	45
11.4	Chesterfield Cricket Club.....	46
11.5	Comment and Complaints	47
11.6	Existing and potential conflicts of interest	47
12.	Environmental Sustainability	49
12.1	Quality and Environmental Policy.....	50
12.2	Procurement	50
12.3	Banned Products.....	50
12.4	Greenprint for Chesterfield.....	51
12.5	Arboriculture.....	51
12.6	The Lake	52
13.	Marketing.....	53
13.1	Rebranding.....	53
13.2	Publicity.....	53

13.3	Future development and marketing.....	54
14.	Management.....	56
14.1	Corporate Strategies	56
14.2	Parks and Open Spaces Strategy.....	57
14.3	Strategic Objectives	57
14.4	Local plan commitments.....	58
14.5	Other Corporate commitments	58
14.6	Business and Resource Planning.....	59
14.7	Action Plan 2017 – 2022	61
	Appendix 1 – Ownership Plan	69
	Appendix 3 – Hierarchy of Routes	71
	Appendix 4 – Responsibility for the provision of services	72
	Appendix 5 – Tree Trail activity.....	73
	Appendix 6 – Health and Safety Responsibilities.....	75
	Appendix 7 – Generic Risk Assessment	77
	Appendix 8 – Public advice on responsible feeding.....	82
	Appendix 9 – Tree Groupings in the park	83
	Appendix 10 – Service information.....	84
	Appendix 11 – Chesterfield Monuments Record.....	85
	Appendix 12 – Heritage Condition	87
	Appendix 13 – Banned product List.....	89
	Appendix 15 – Council Policies	90
	Appendix 16 - Revenue cost for the park	101
	Appendix 17 Property Repairs and Maintenance Schedule	104

Foreword

In our ever-increasingly busy lives, public parks are essential. We recognise their value in terms of heritage, education, biodiversity and for relaxation, exercise, play, social gatherings, sport, and a range of cultural activities. More recently they are providing a focus for communities to get together and volunteer, with people learning new skills and making a difference. We as the managing authority nurture our parks as vital to the quality of life and acknowledge their importance by keeping all parks, whatever their size, on our local agenda.

Chesterfield Borough Council continues to demonstrate its commitment to this, by our work through the recently updated Parks and Open Spaces Strategy. We recognise that as our environment and lives change, we need to focus our efforts on our customer's priorities and encourage new visitors into our parks to retain their vitality and role in our communities. The Strategy will therefore set out our aims and objectives ensuring we have a clear vision, focussed on what our customers need.

At the heart of Chesterfield and key to our strategic aims is Queen's Park which fulfils a variety of roles from serving severely deprived communities to playing a key role in the regeneration of our town. With a catchment area of 200,000 within 20 minutes of the park, it offers a wide range of facilities and opportunities. This management plan seeks to ensure that these are managed wisely by focussing key actions, to protect and where possible enhance the environment and the park's facilities. A prime example of this is that in the summer of 2019 Queen's Park was again the beautiful setting and venue for a week of national County Cricket. An agreement is now in place up to 2025.

Despite the need to be increasingly prudent with both capital and revenue expenditure, especially during this very difficult financial time, the Council commits substantial resources to Queen's Park and continues to provide a high standard of maintenance and development. This ensures the continual enjoyment for our townsfolk and helps provide a high-quality public space that will be loved and enjoyed across the town for many generations to come.



Councillor Jill Manion-Brunt

Cabinet Member for Health and Wellbeing



Acknowledgements

This plan has been produced by Chesterfield Borough Council Green Spaces Team.

Special thanks go to the Friends of Queen's Park for their help and assistance with this project.

Also:

Chesterfield Borough Council's Environment Services,

Community Safety Partnership,

Planning Services

Facilities Maintenance in Design Services.

Chesterfield Cricket Club

The Police and Safer Neighbourhoods Town Centre Team

Fredericks of Chesterfield

Heritage Lottery Fund

Further information about this management plan can be obtained from:

Chesterfield Borough Council, Green Spaces Team, Old Brickworks Lane, Chesterfield, S41 7LF.

<http://www.chesterfield.gov.uk>



1. Introduction

The plan sets out the aims and objectives for the delivery and development of services and facilities in Queen's Park.

The park serves a wide range of user groups with different interests and concerns and supports a broad activity base all year around. Therefore a management plan is considered necessary to demonstrate how Chesterfield Borough Council wishes to work with user groups to maintain the park to the highest standard, so that it can continue to serve current and new park users and local residents now and into the future.

As part of the Council's continuing work to raise the quality of our parks and open spaces to meet Green Flag standards, the preparation of park management plans will assist in directing resources and investment to maintain the standards achieved and to drive continuous improvement.

2. Responsibility for the Plan

With the recent shift in management delivery this plan is now the responsibility of the Green Spaces Team within Environment Services.

Much of the plan has been prepared by the Green Spaces team within Environmental Services.

The plan covers a ten-year period from 2016 – 2026.

The plan is reviewed annually to ensure that aims and objectives are being met and that financial targets are being achieved.

Further reviews of the effectiveness of the plan are planned in years 5 and 10 from submission in the programme.

3. Location

3.1 Site Details

Queen's Park is 22 acres in size and considered a borough park that is located a few hundred metres to the south of Chesterfield town centre. It is easily accessed via a pedestrian footbridge. The park is set within mainly commercial properties but has some residential properties on its perimeter, including the Boythorpe estate.

3.2 Site Address



The postal address is as follows:

Queen's Park,
North Lodge,
Boythorpe Avenue,
Chesterfield,
Derbyshire
S40 2JX

4. Ward

The park falls within the St. Leonard's ward of Chesterfield Borough.

4.1 Elected Members

St Leonard's: Sharon Blank – Labour, Dan Kelly – Labour, Kate Sarvent – Labour
The Labour controlled ward of Rother adjoins.

The cabinet member for health and wellbeing is Cllr Jill Mannion-Brunt (Labour).
The cabinet member for town centre and visitor economy is Cllr Kate Sarvent (Labour)
and she is assisted by Cllr Jean Innes (Labour).

Please see Appendix 1 for the Cabinet member's portfolios

The leader of the Council is Cllr Tricia Gilby (Labour). She is supported by Cllr Amanda Serjeant (Labour)

5. Site Ownership, Leases, and Designations

5.1 Tenure

A plan showing the precise area of the park that is in the ownership of Chesterfield Borough Council can be found in appendix 2.

This ownership extends to all the buildings within the park which are given a unique property reference number (UPRN)



5.2 Leases and Agreements

The cricket pavilion is the home base of Chesterfield Cricket Club. Their annual agreement includes the use of the facilities, including changing and showering facilities, bar, kitchen and function room within the pavilion, plus access to the cricket field and a synthetic surface with practice nets. Meetings are currently being held to discuss issues and tenure etc. This agreement is due to be formalised in a lease to protect the interests of the landlord and the Cricket Club. The pavilion provides conference facilities for up to 30 delegates. The park setting provides a welcome environment for people wishing to hold meetings. It is popular with internal departments as well as Derbyshire County Council and the Alzheimer's Society. The cricket club manage these bookings as part of their lease.

The borough council has an established agreement with the Derbyshire County Cricket Club in providing first-class cricket in Queen's Park. An additional 5 years was approved in 2019.

Macintyre has a 10 year lease for South Lodge, conference rooms and courtyard within the park. They also now have an annual contract to make use of the conservatory – using it as a craft activity workshop for their clients and to be able to sell the products they make along with other charity shop items.

Frederick's of Chesterfield won the franchise for the café facility in 2006. Their occupation of the premises continues with an extension to the lease from 2019.

Ice cream and inflatable concessions – There are agreements with local companies to trade in the park, which is reviewed annually.

Catering vans trade in the park during events, these are subject to provision of the necessary food and hygiene documents as requested by Chesterfield Borough Council's Environmental Services.

Funfairs – The funfair comes to the park (usually 3 times a year) they enter into a licence agreement with the council which is negotiated.

Legal agreements are drawn for other larger scale events in the park which are organised by external companies.

5.3 Planning Designations and Legal Restrictions

Within the path network in the park there are no statutory public rights of way. The cycle path on the northern boundary of the park is part of the Hipper Valley cycle route.

There are two important restrictive covenants placed on the land purchase:

The Corporation will not at any time hereafter use the hereditaments hereby assured or permit the same to be used for any purposes other than those of a Recreation Ground for the people of Chesterfield aforesaid.

The Corporation will not erect any buildings upon the same hereditaments except such as may be necessary or convenient for the enjoyment thereof as a Recreation Ground.

5.4 Conservation Area Status

Queen's Park is designated as a Conservation Area; policies to preserve and enhance the historic environment and to encourage their physical and economic revitalisation should be applied.

The Borough of Chesterfield Local Plan identifies Queen's Park as a park or open space (PR1), and on 23rd January 1979 the park was designated as a conservation area (EN31/EN32) and is also a Historic park and garden (EV33).

The park has been entered as having Grade II listed status on the English Heritage register of Historic Parks and Gardens since 2002.

In 2012 this was elevated to a Grade II*

There are three listed structures in Queens Park:

- The Boythorpe Avenue (north side) gates, piers, and railings.
- The Octagonal Bandstand.
- The Cruciform Conservatory.

Each structure is described as dating from late 19th Century.

6. Site Attractions and Facilities



Facilities available in the park consist of the following:

North Lodge – A focal point in the park comprises of Fredericks' Gelateria and café. Accessible public toilets incorporating disability and baby changing facilities with an information / interpretation point. Once housed by the parks team, after a recent renovation we hope to let as a business premises.

Cricket Ground and Pavilion – Chesterfield Cricket club base and host to Derbyshire County Cricket over two weeks in the summer. The building can be hired out for meetings. There is an accessible entrance to the rear of the building along with dedicated parking. To the east of the pavilion the terraces have made way for reinforced grass lawns in their historical layout for use by marquee facilities, with water and electricity services provided.

Junior Play Area – State of the art play equipment within a woodland adventure play setting. A youth shelter has also been installed in this area.

Kindergarten Play Area – A roped, interactive play area adjacent to the café at North Lodge incorporates exciting play concepts. Its proximity to the facilities in North Lodge provides young families with an extra comfort.

The Conservatory – once maintained as a temperate / cool plant display area, it now serves as a flexible events space.

Train Station & Miniature Railway – A small brick ‘Station Masters Office’ provides purchase of tickets for the train rides.

The Dovecote Shelter – The improved access via a sinuous path, the shelter has waist high balustrade and traditional rosemary tile construction to the roof. It is a great vantage point to view the lake below.

The Lake – As a main feature of the park the lake has been improved through restoration and now has the original Victorian lake outline. The lake edges have been restored and island vegetation managed. Mechanisms to improve the water quality have been implemented.

Western Lake Habitat – this area provides a wildlife area. The vegetation favours native species and wetland habitats. There is access to the lakeside via a path, which allows ease of wheelchair and pushchair users. This access is an historic link believed to have been included when the park was originally laid out.

Amenity Open Space – this is a large area of grass for informal recreation and picnics. The ground levels have been moderated to allow for ball games. It is surrounded by the re-aligned perimeter path, which reflects the historic layout.

The bandstand - (1930's) serves as a musical hub with a series of brass band concerts in the summer. It also serves as an interesting event space. Being popular, additional seats have been placed via a funding bid by the friend's group.

Parks Service Area – Maintenance service area. For public safety reasons it has been screened and fenced off from the rest of the park. Small scale green waste composting is also undertaken in this area, mostly in the form of leaf mould for the shrub beds and borders.

Northern Boundary – Vegetation has been removed to create open views into the park. The cycle path has been retained and the riverside vegetation is to be managed as a wildlife corridor.

‘Edgar Styler Garden’. – This includes triangular herbaceous planting beds framed in grass with perennial borders

Woodland Walks –Minor access paths have been recreated to the historical layout and woodland walks introduced through managed vegetation. Ground flora is being conserved. Views have been created through the tree belt on the Northern boundary.

The Mount – As an inclusion in the restoration project the mount incorporates the historic path layout, creating a spiral effect, with a raised viewing area adjacent to the footbridge into the town centre.

Footpaths in general – All footpaths are of tarmac construction to allow easy access.

3G 5-a-side pitch (administered by the Queen’s Park Sports Centre). Popular with 5 a side teams and our increasingly active ‘walking football’ community. It provides opportunity for more informal as well as pre booked use.

New 3G sports pitch

The most recent addition to the park is the new multi pitch 3G sports facility. Completed in November 2019 it occupies a large part of the western boundary and includes a new landscaping scheme to compliment the reinstatement of the park’s original boundary and entrance gates. The pitches provide a facility 7 days a week up until 10pm weekdays and is proving to be a great addition to play provision both locally and across the wider neighbourhoods.

6.1 Access and circulation

The park has six main access points.

The North Lodge Footbridge allows passage on foot from the park to the town centre and access to the cycle track running along the park’s northern boundary.

Boythorpe Road has two entrances, to the north and south of the former sports centre site. The north entrance is used by pedestrians but has also locked vehicular access, opened when necessary. The south entrance has vehicular access but is also used by pedestrians.

Boythorpe Avenue also has two entrances. The eastern gate is a listed structure which allows for vehicular and pedestrian access. It is currently used as a vehicular gate incorporating a one-way system; it serves as the main exit from the park on the eastern boundary. The western gate is the main vehicular access for the park, thereby reducing the potential conflict for park staff and users. The main footpaths also provide access for the park’s maintenance vehicles.

Park Road provides one entrance, which is a pedestrian thoroughfare, ensuring good, if at times busy access to the nearby retail park.

The old 'cycle track' was part of the original layout and follows the boundary of the cricket ground. The wide, generous, mainly level paths are a feature of the park, and are attractive to users of all abilities.

A map showing the hierarchy of routes can be found in appendix 3.

Relationship and corridors to other parks

The green way cycle route that runs along the northern boundary of Queen's Park links directly out to Holmebrook Valley Park on the west side of the Borough and to Linacre Valley and beyond. The cycle path has now been extended to the train station and to the sports centre to the north of the park.

Accessible footpaths link into the town centre and other areas of public open space such as Shentall's Gardens, the Town Hall, and the Crooked Spire Parish Church

7. A Welcoming Place



Queen's Park is the premier park in the town of Chesterfield. The park plays a vital role in providing a place for recreation, somewhere to relax for the many workers within the town centre and a focal point for events in the town. The council want to ensure that the environment is pleasant and attractive and that for people it is a positive and engaging experience.

7.1 Current management system

The Council's Leisure, Culture and Community Wellbeing directorate incorporates the greenspace, streetscene, building cleaning, building/repairs, capital works, waste management, bereavement services and support services units. The greenspace, streetscene, waste management and building cleaning units are managed as 'Environmental Services' within the structure.

The Greenspaces unit is responsible for the management of country parks, urban parks, nature reserves, allotments, woodlands, and arboriculture within Chesterfield along with wider grounds maintenance and greenspace development.

Other duties include the provision of arboricultural advice to other sections of the council and the letting of facilities in parks for events and sports.

The Greenspaces Team undertake a range of estate and grounds maintenance tasks including horticulture, sports pitch care, grassland management, hedgerow maintenance, access improvements and the maintenance of fencing and site furniture.

Other duties of the team are leading volunteer tasks and guided walks, liaising with the public, providing visitor information, supporting events and deterring misuse of sites. This includes dog fouling and littering enforcement.

Parks policy, landscape development, and play development strategies are formulated by the Greenspaces Section. Sport strategy is formulated by the Council's Leisure Services section.

The Greenspaces Team is headed by the Greenspace Development Manager and Greenspace Strategic Manager, one of whom oversees strategic matters and the other who oversees land management and maintenance matters.

The team is supported by a greenspace development team leader who oversees commercial lettings, events management, and community liaison.

Environmental Services is responsible for the development and management of Queen's Park within a wider leisure portfolio.

The organogram in appendix 4 sets out the key elements engaged in providing services within the park.

The restructure resulted in a leaner management tier and a multi-skilled workforce with greater flexibility in duties and working hours.

There is a regular greenspace officer presence in the park with continuous presence in working hours during the spring/summer months. It allows the staff to be responsive in respect to issues daily. This presence also improves customer interfacing, gives people a feeling of security and deters anti-social behaviour.

7.2 Accessibility

There are some existing interpretation signs around the lake detailing the various types of wildfowl that are to be found. There is a notice board at the bottom of the footbridge which promotes activities and events. It directs public to the café who will be able to assist further. In the café foyer another noticeboard is available for informational posters. In the café there are some historic interpretation panels. New entrance signs are currently being prepared to include the new 3G facility. Working with the Friends of Queen's Park it is hoped to explore other sensory and interpretation aspects of the park further.

Frederick's of Chesterfield have also added colour to the park and the entrances with hand painted signage.

Access to the site is good, being on several bus and cycle routes.

There are several car-parking facilities around the park which also include disabled parking spaces. Within the park itself there is a small car park which has a disabled parking space (this is a permit holders car park)

There is a level access into the Cricket Pavilion, which enables people with limited mobility to get into the building. Once inside, accessible toilets and changing spaces are provided. More extensive inclusive toilet facilities and baby change are provided at North Lodge.

Throughout the design process for the parks, the Chesterfield Sure Start and Ashgate Croft School for children with severe learning disabilities were consulted on the content, layout and access arrangements and play value for children with disabilities.

7.3 Amenity Value

Queen's Park is in a key position in relation to both the Town Centre and the wider green corridor network of the Borough; the landscape character of the park contains a mix of formal and semi-natural landscape elements.

The elements in the park relating to the quality of the built environment include the historic boundary wall and gateways, the lodges, listed bandstand and conservatory. Views towards the distinctive Town Centre skyline area very important, The Town Hall, Market Place, and St Mary's Church tower (Crooked Spire) are well known landmarks. More recently, the new Post Office buildings on West Bars and Boythorpe Road, the Sports Centre, have had an impact on the built environment around the Park. The modern retail park off Markham Road has also changed the character of the approach to Queen's Park from the east. The impression from a driver's perspective is of a typical modern urban landscape. This is in contrast with the human scale pedestrian friendly Town Centre and Market areas. The footbridge over Markham Road is important as it links the Town Centre and Queen's Park, helping pedestrians avoid the busy road.

The semi-natural elements in Queen's Park influence its landscape character. The River Hipper corridor, although contained on both sides by a retaining wall and a footpath, is tree lined and the sound of flowing water softens the traffic noise from above.

The lake and its surroundings are characterised by densely planted mature trees and evergreen shrubs. The park boundaries are mostly populated with trees, giving a sense of enclosure on three sides of the park. The central grassed open spaces are in contrast with the boundary areas, these form the 'green lungs' of the park. The sense of space and detachment from the adjacent busy roads, but within easy reach of the town centre is one of the essential characteristics of the Park.

The Greenspaces team has recently begun a project to improve the visual amenity of the main entrances to the park. The 'Park Road' entrance underwent renovation in 2017. This has involved moving furniture, sensitive tree thinning, soil cultivation and planting with spring bulbs and vibrant herbaceous plants providing colour throughout most of the year.

7.4 Education Value

The park is an ideal base for educational visits. The town's urban studies centre provides sessions to teach children about the park's Victorian heritage. A trip on the

miniature railway is always a treat after the sessions. Other educational activities which take place for example are mini-beast hunting and tree trails.

Two schools are in very close proximity to the park, others are within walking distance.

Nearby secondary school pupils regularly use the park to get to the town centre with many choosing to spend lunchtimes there.

An example of a tree trail activity can be found in appendix 5.

7.5 Recreational Value

Queen's Park is an important part of the social and economic landscape of Chesterfield and it retains much of its original layout from the 1890's.

The Park was born out of a vision by the Mayor and Burgesses of the town who wished to expand the overcrowded Borough, and to provide a proper recreation ground on former meadowland just outside the Medieval Borough boundaries.

Alderman T P Wood, Mayor of Chesterfield in 1886, proposed that land should be acquired by the Local Board for the creation of a public park to mark Queen Victoria's Golden Jubilee in 1887, and to ameliorate the overcrowded conditions in the centre of the town.

7.6 Sports, activities and play facilities

Cricket is the main sporting focal point in the park; it takes up approximately one third of the available open space area. It has been played in the park for over one hundred years since the park opened in 1893.

After a refurbishment of the pavilion and facilities, along with our continued commitment to providing excellence, Derbyshire County Cricket Club visit as part of our cricket festival each year. The usual format is a 4-day county championship match followed by a Twenty20 'showcase' match. This attracts a different type of spectator and is a vibrant event, attended by crowds of up to 10,000. Derbyshire enjoy a fixture against Yorkshire to make the most of the local derby.

Queen's Park continues to be used as a venue for the Redbrik Chesterfield half marathon. The event starts and finishes in the park and takes in various highways in Chesterfield. There is a shorter fun run which stays within the park, popular with families and younger runners. Race for Life also continues in Chesterfield and now the race is held almost entirely in the park.

The north Derbyshire running club hold races in the park once a month. Wheely fun Wheels run an inclusive cycling session in the park on a weekly basis.

5 a side football can be played on the 'third generation 3G' floodlit synthetic pitch, completed in November 2019 it is a welcome addition to the park. The facility was pre booked months in advance of completion and is comprehensively used by adults and children alike especially in evenings and at weekends. Bookings are managed by the Sports centre and daily maintenance carried out by the parks staff.

The two children's play areas are well used especially during the summer months. The original timber was replaced with recycled plastic in 2017 for greater longevity and lower maintenance. The original 'wetpour' safer surfacing in the North Lodge play area was patch repaired and overlaid with 'Notts Turf' artificial grass to improve wear resistance.

8. Healthy, Safe and Secure

Ways in which different people are responsible for various health and safety aspects on site can be found in appendix 6.

8.1 Public Safety

The Councils Corporate Health and Safety Advisor oversees the general workings of the council and if any issues need resolving will have an input from his point of view and that of the overriding council health and safety policy. If there are such occurrences that the Health and Safety Executive must inspect, the council H&S officer will advise and carry out follow up inspections of action plans that would need to be submitted.

A number of audits will be carried out whereby the health and safety advisor will visit all service areas to ensure that relevant paperwork is in place and also members of staff will be questioned regarding their knowledge of health and safety and how it affects them.

The Environment Services Health and Safety Advisor is responsible for our employees and all the work-related tasks that they carry out. This includes ensuring that they are all appropriately trained, that all machinery they are using is safe to use and the relevant risk assessments and COSHH assessments have been carried out.

An inspection of the park was carried out to create a generic risk assessment for the park under general operation. This will be reviewed on an annual basis. An example can be found in appendix 7.

As part of the role for the development team leader, several events are organised. These events are individually risk assessed identifying very specific potential risks. If the event is large scale enough that it warrants an emergency plan, this is carried out in partnership between Chesterfield Borough Council, Derbyshire County Council, and the emergency services. The cricket festival and the Chesterfield Half Marathon have an emergency plan in place.

The Facilities Maintenance department is responsible for fire safety in the Pavilion and North Lodge. Regular inspections are carried out with the safety adviser. Policies, procedures and action plans are implemented.

The Greenspaces Team, along with a union representative carries out quarterly building inspections with action plans drawn up.

The staff on site ensure that their equipment is ready for use prior to carrying out tasks. The play areas meet current European standards and accommodate all-inclusive play. Trained park staff carry out daily playground inspections and maintenance as and when necessary or report defects to the relevant person. The grounds staff are trained in the removal of sharps and it is their responsibility to remove them as soon as possible.

8.2 Geese

The council identifies that the large number of geese and the mess they make, especially in the summer months causes concern by members of the public

We are continuing our efforts to control the number of geese in the park. We do try to discourage visitors from feeding the Geese but historically this is a popular pastime in the park. Please see appendix 8 for public information regarding responsible feeding

8.3 Cricket Balls

With the return of county cricket, the change of the format of the game along with the location of the play area, an increased risk of injury from a stray cricket ball has been identified. The height of the existing netting was doubled. Sadly, this was not sufficient for the T20 games and the Derbyshire Cricket Club's risk assessors insisted that the play area was to remain closed for the duration of the match.

In recent years alternative free play provision has been made but this is not required now as park users are aware and do accept that the play area will be closed for the few hours that this match takes place. We put signs up to reinforce this.

8.4 Reporting Mechanisms

Anyone can report an accident / incident or dangerous occurrence by a variety of means. Following policy, the details are entered into the council's health and safety system via the Council intranet. There are a few 'Park Watch' notices around the park which gives telephone numbers for the Police and Crimestoppers should anyone witness crime in progress or antisocial behaviour.

There are contact numbers for the greenspace officers on site so members of the public can leave messages. Public also find it useful to utilise the café as a focal point.

8.5 Tree reporting Regime

Proactive Inspections

The tree stock within the park is routinely inspected by officers who are trained and qualified in arboriculture.

Trees along main access routes, adjacent to buildings and around other areas of high public use are inspected annually in accordance with the tree survey risk assessment. Individual trees are assessed for safety using the VALID Tree Risk Benefit Assessment method and pruning or felling prescribed is based on the evidence of visible significant defects and the location of the tree.

Reactive Inspections

The public can report perceived dangerous trees through the council's call centre. The enquiries are logged on a central system (3C's or Salesforce platforms) and assigned to the appropriate officer.

Out-of-hours Call Out

The public can contact the council's Careline to report dangerous trees on council land outside normal working hours.

The Careline staff will then contact the officer on call (a rota system is operated) who will visit the site and assess the tree and the need for remedial work.

Any work deemed immediately necessary would be undertaken by an on-call contractor.

Standards of Work

All tree work undertaken by the council, or by contractors working on the council's behalf, comply with British Standard BS3998:2012 Tree Work. Work is prioritised according to urgency.

8.6 Water Courses

The lake is checked daily. The outlet into the river is checked to make sure it is running freely.

A 1 metre high post and wire fence surrounds the lake, so people don't have easy access to the lake. If this or other fencing is damaged it will be reported. Additionally, the wire meshing around the margin occasionally gets vandalised leaving sharp edges. These are dealt with as soon as they are discovered.

A build-up of blue / green algae becomes a problem in the summer. As the lake is no longer used for rowing boats the water quality is no longer tested for algal blooms on a weekly basis. Methods such as the installation of barley straw bales are being

deployed to improve the water quality. Replacement of the aspirators is scheduled for Spring 2022

8.7 Security

The main buildings are secured by night and have intruder alarms fitted. A local security company (Riber) are the key holders and will attend the park along with the Police if such alarms are activated.

Lighting to areas adjoining the Cricket Pavilion has improved safety for people using the function room into the evening.

CCTV covers key areas in the park. There are two cameras that are controlled as part of the town centre CCTV operation. There are also 2 cameras on the pavilion and North Lodge, which are recorded locally. Fredericks operate their own CCTV system, which gives extra coverage.

The security of the park is a necessary role for the Greenspaces Team. The presence (during working hours) of the park team in general acts as a deterrent to criminal activity. The cricket club are in the park during the summer months, at the weekend and most evenings and so this contributes to this deterrent. There is a mosquito device installed which emits a very high frequency tone that deters groups of youths gathering around the cricket pavilion.

8.8 Community Safety Partnership

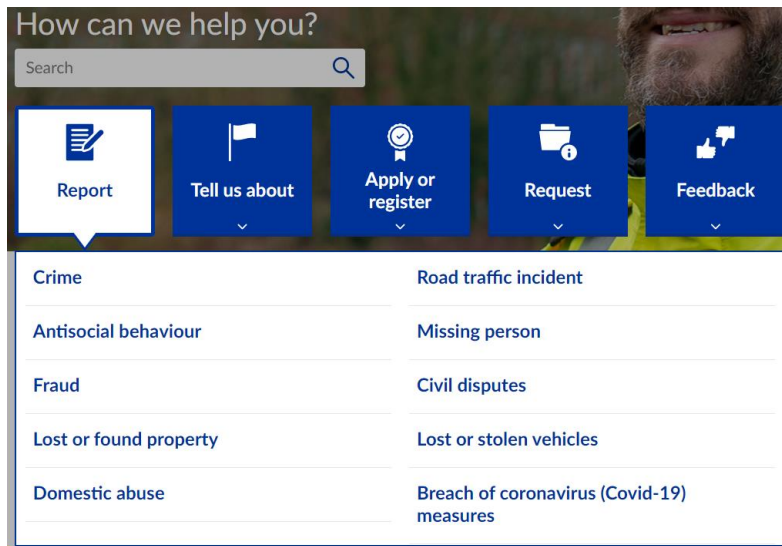
Made up of officers from the council in partnership with Derbyshire Constabulary. Queen's Park (technically) is located within the ward of Hasland and St Leonards but due to its proximity to the town centre has been included within the town centre SNT operational procedures.

From the Police website

Your Safer Neighbourhood team (SNT) is a group of local police officers, Police Community Support Officers and Specials dedicated to serving your community. The team is supported by additional officers from the wider area.

We work closely with local authorities, community leaders and residents to decide our policing priorities for the area. This helps us to find useful, long-term solutions to local problems, while maintaining our wider focus on preventing and reducing crime, protecting the vulnerable and providing reassurance across Derbyshire.

From time to time and during peaks in anti-social behaviour joint patrols are carried out between the police, community safety officers, members of the parks team and occasionally members of the public. The police website has vastly improved making it easier for people to report crimes. Previously people had been on the phone for lengthy periods which decreased the likelihood of future reporting. The website and social media platforms have aided this reporting putting the Police in a better position when it comes to their priorities.



Several years ago, section 17 of the Crime and Disorder Act report was prepared. Various hotspots were identified, and measures were put in place to reduce crime and the fear of crime.

It is mainly low-level crime and anti-social behaviour which occurs in the park. This is often dealt with by implementing restorative justice but can result in fines. It is about finding positive solutions and encouraging offenders to face up to their actions, making them understand what they've done wrong and give them an opportunity to do something to repair the harm. It also prevents them from having a criminal record.

9. Clean and Well Maintained



9.1 Grounds Maintenance

The team works within the existing grounds maintenance budget and have a more flexible approach to delivery of the service, which will improve quality and performance. Following restructure in 2017 a more holistic approach to park maintenance and management has been adopted through the amalgamation of the ground maintenance team and park greenspace officer service into the new Greenspaces Team. The team are multi-skilled, and more emphasis is placed on attention to detail and delivery of quality services.

There has been a shift from the frequency-based specification to quality-based outcomes. Greater emphasis will be placed on horticultural excellence in the park and the horticultural skills required to maintaining an historic park.

The team have a much more customer focus, giving advice to the public and becoming involved in event management.

The west area Greenspaces Team has a 3.5 tonne tipper, a four-wheel drive pickup truck and an all-terrain vehicle at its disposal. The team has access to a pool of plant such as tractors, flail attachments, ride-on brush cutters, rotovators, woodchippers, a stump grinder, larger trucks, trailers and boats for water maintenance.

The team have an on-site tool store consisting of fencing equipment, wood working and joinery tools and grounds maintenance equipment, such as chainsaws and brushcutters.



9.2 Existing Maintenance

The Greenspace Officers who maintain the park work under the direction of the team leader. The Greenspace Officers are multi-skilled but with their own individual specialisms. One Greenspace Officer is a skilled cricket groundsman who is engaged full-time on cricket duties during the summer months. Other Greenspace Officers specialise in amenity horticulture.

The objectives for the team over the coming year are:

- Improving horticultural standards and maintaining mowing frequencies.
- Aesthetic enhancement of the main entrances to the parks including working with the Friends Group to develop 'Welcome Signage'.
- Maintain high standards of sports ground keeping and deliver 'County' standard wickets.
- Work with partners to reduce anti-social behaviour within the park and combat vandalism.

- Improve access arrangements
- Encourage appropriate visitor waste disposal and, in liaison with enforcement officers, reduce incidents of dog fouling and littering.
- Continue to promote waste minimisation
- Chesterfield has been awarded Gold status for the East Midlands in Bloom horticulture competition in 2019/20/21.
- Since the completed restoration of the Queen's Park in 2005, the park has been awarded a Green Flag every year to date. This allows members of the public and partners to recognise the achievement of being a park of quality.

9.3 Horticultural works

Woodland Walks – with conservation in mind and encouraging the emergence of ground flora, the staff works towards the retention of views and manage vegetation for diversity. Improving the range of planting including shrubs, herbaceous perennials and bulbs to give all year-round interest. The tree groupings in the park can be found in appendix 9.

Floral bedding displays may be found at key focal points in the park, which are planted for summer displays.

A current project is the enhancement of horticultural displays at the main entrance points to the park. This is being achieved through sensitive clearance and cultivation followed by structured bulb planting and herbaceous perennials.

The sandstone and limestone rockeries are maintained to high standard with continuous planting of alpine plant species.

Decorative flowerbeds were a feature of the original layout of the park. The Edgar Styler Garden contains three large herbaceous borders within a triangular lawn and maintained to high standard.

Around the toddler play area, near to the café we are developing a miniature box hedge and specimen planting area including trees and bedding and herbaceous planting and bulbs.

Bulb planting is a feature of spring bedding displays, and bulbs are used widely on the edges of the amenity open spaces where they can be viewed from footpaths.

9.4 Hardworks, furniture and fencing

The original brick boundary wall dates from 1890. The wall extends from the junction of Boythorpe Road and Boythorpe Avenue eastwards along Boythorpe Avenue and northwards as far as the cycleway crossing on the former Brampton Branch Line. The brick wall varies in height from 1.8 to 2.7m, with a dog tooth stone coping set on a tile creasing course. The wall is in variable condition and there is evidence of former openings and repairs at intervals along its length. A George V letterbox is a feature at Park Road, and the lintel to an earlier entrance kiosk is visible near the Park Road gate.

Metal railings are used within the park boundaries, mainly as safety fences associated with the water feature and miniature railway line.

There are brick wall and metal railing barriers arranged around sections of the perimeter of the cricket ground as ball stop fences, and to contain the permanent terrace structure.

Seats are arranged in simple lines or in the case of the cricket viewing area, along concrete terrace.

The Kindergarten play area is roped with a sand safety surfacing. Play equipment includes four swings, multi-play units incorporating a slide and a hammock, also with sand interaction, spring seesaws, water play feature and a spinner. The junior play area includes a teenage shelter, a 5 swing unit plus four additional swings, 2 multi units and other modern pieces of equipment.

There are incidental items of furniture including litterbins, bollards and signs the council are trialling a bin with recycling compartments.

At present all green waste is taken to a registered green landfill site. Due to site restrictions and the volumes of green material generated, only leaf collection is retained for recycling purposes at present. Future opportunities are being explored to compost green waste at source for use in the park.

Lighting includes floodlighting to the 3G pitches, and building mounted lighting to the lodges, pavilion, and conference centre. There are a few street lighting columns on the main paths. The bandstand has ground level upwards lighting.

9.5 Vandalism and Graffiti Policy

General policy regarding the removal of graffiti is to do so as soon as it is reported. However, this is not always practicable. We aim to remove it within a week. If the graffiti is of an offensive nature it should be removed within 24 hours of it being reported.

Vandalism is dealt with through our estate's maintenance team. There is a designated officer for each site, and they will arrange for repair. Anything of a dangerous nature is taken out of commission by means of cordoning the area off or removing dangerous items.

9.6 Vehicle Management

To reduce the amount of unnecessary vehicle movements in the park the council have asked various departments not to use the paths in the park unless it is essential for work related reasons, i.e. a works van close to the workplace to allow easy access to tools is acceptable.

An alteration to the flow of traffic through the park has been implemented to allow safe egress onto Boythorpe Avenue. This is with the introduction of a one-way system, entering the park by the cricket pavilion and egressing by the bandstand. This applies to works vehicles, cricket club members and visitors to the park.

9.7 Drainage

There are several natural springs that emerge within the park. Land drainage and surface water drainage from buildings, paths, etc. was extensively renewed in the park. Problems arose because the original system was difficult to trace as few records existed. The restoration plan addressed the renewal of surface water drainage systems throughout the park, although this continues to be ongoing. The main amenity grassland has a system beneath it whereby the excess water is fed into the lake. The outflow of the lake flows into the adjacent River Hipper

9.8 Service Information

Up to date maps are held by Chesterfield Borough Council but any proposed excavation works must obtain final clearance from each utility before works commence.

As part of the restoration a 33kv main was re-routed along the northern boundary of the park to allow construction work to take place. All the services discovered within the park during the restoration which included high pressure gas main, low pressure gas supplies a series of high voltage electricity cables and various water and sewerage pipes were plotted in detail and identified for future reference.

Some of the supplies have been upgraded for example 3 phase electricity to serve the cricket area and catering unit in line with anticipated demand.

A new mains water supply is proposed for 2020 to the cricket pavilion. This is to improve the existing irrigation to the cricket square and outfield

A plan of service information can be found in appendix 10.

9.9 Maintenance of Buildings and Structures

In general, the buildings and structures on the park have been upgraded during the restoration and are in good condition. The listed buildings where necessary have been refurbished with fully functional services and amenities.

The Senior Building Surveyor and the Energy Management Officer in Design Services manage the repair and maintenance programme on behalf of Environmental Services.

9.10 Building Cleaning

The Council's own Building Cleansing Service carries out the cleaning of buildings.

10. Conservation of Heritage



There are several parks and gardens of historic interest in the Borough, which require special protection to ensure their survival and integrity.

Queen's Park is included on English Heritage's National Register of Historic Parks and Gardens with a grade 2* status. The effect of development proposals on a registered park or garden or its setting is a material consideration in the determination of planning applications.

Any proposal to further develop the historic park will require a specialist evaluation and impact assessment, together with a statement of any mitigating measures to be taken.

10.1 Historic Relevance

The original impetus for the creation of the Park was Queen's Victoria's Golden Jubilee celebrations. The site was dedicated on 21st September 1887 when the first ceremonial tree was planted, and the land sales were settled in July 1888.

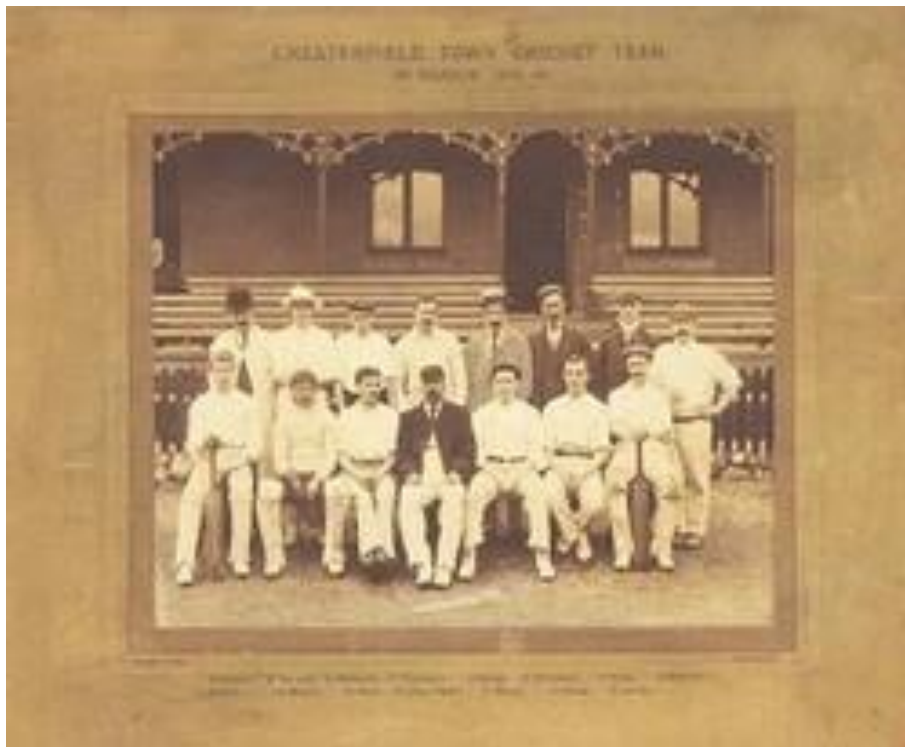
Alderman Wood donated £500, and some £3500 was raised to purchase 17 acres known as Maynard's Meadows to the south of the town.

An additional 5 acres (c 2ha) were purchased for incorporation into the park in October 1889, the necessary funds being raised by a Ladies' Bazaar Committee.

However, it was not until 1891 that the layout for the twenty-two acre park was agreed, by means of a design competition. Seven designs were submitted, and William Barron and Sons from Borrowash were chosen by the Parks Committee. Mr Tomlinson was later appointed as contractor.

Implementation of this scheme was funded by a mortgage raised with the Yorkshire Penny Bank.

The hallmark of Barron's designs was the formal axis and focal point, as well as the sinuous path layout. Barron was also credited for successfully combining formal sports uses with more informal recreation, and this has been continued throughout the history of Queens Park.



Chesterfield Cricket Club 1902

Queen's Park was officially opened to the public on 2 August 1893 with the first Chesterfield Floral and Horticultural Society Show being held in the park. A cricket pitch was constructed in 1893 and was inaugurated in May 1894. The associated pavilion was constructed in 1898.

There has been a continuing tradition including county cricket from 1898 up to the present day, interrupted only by the two World Wars. The setting of the cricket ground in Queen's Park, with the distinctive backdrop of the town skyline and famous Crooked Spire has given T.V. and radio commentators plenty to eulogise over in the last fifty years.

Although the original layout has remained intact, there have been some significant changes and introductions in the park. These are highlighted by a study of maps from the first edition Ordnance Survey in 1878.

Late C19 park facilities included a bandstand, boating lake, cycle track and gymnasium; plans for public baths were not implemented.



In 1901 a further 13 acres, separated from the original park by Boythorpe Avenue to the south, was acquired by the town as a memorial to Queen Victoria. This land was laid out as a recreation ground and known as Queen's Park Annexe.

A statue of *The Girl with the Stolen Rose* by a local sculptor, Herbert Lee was presented to the park in 1909.

The park was used for regular fetes and events such as the Coronation parade in 1910.

Following the First World War a tank was presented to the town and placed in the park in July 1919.

A programme of renovations and improvements was undertaken in the early 1920s, which included the construction of a new bandstand and the erection of a conservatory in the early 1930's. Plans for a refreshment pavilion were submitted by Clifford Bond and the Borough Surveyor in 1939.

During the Second World War the park was used by the local authority for events associated with the 'Holidays at Home' scheme, while in 1943 metal railings round the cricket pitch were removed for the war effort; the conservatory was converted to food production.

In the mid and late C20 a sports centre was constructed within the park adjacent to its western boundary. This has since been demolished and the site now comprises the 3G pitches and soft landscape planting to integrate the site back into the park landscape.

10.2 Archaeological Relevance

The largely dismantled Midland Railway, Brampton branch (1870) is entered on the Sites and Monuments Record, listed as a monument. SMR Number 31506 – MDR10126.

A programme of renovation was undertaken in the early 1950s, while the London, Midland and Scottish railway line which formed the northern boundary of the site closed in the mid C20.

Historical research has indicated that the previous land use was agricultural land with no built features. Queen's Park is well outside the footprint of the early Roman Settlement, and no finds have been recorded to our knowledge. The monument record can be found in appendix 11.

10.3 Heritage Value

Queen's Park dates from a great era of park making throughout the country. The Victorian public park emerged from a political desire to improve the physical and environmental conditions in rapidly expanding industrial towns. Park promoters thought that parks would provide fresh air and places for towns people to take exercise to improve their health. At Queen's Park the pressure was on to find a new meeting and gathering space away from the overcrowded and unhealthy Market Square area. By the 1880's, park design principles had been established elsewhere, and it is likely that Chesterfield followed other examples from Midlands industrial Towns.

In an article by Harriet Jordon in *Garden History*¹ the design is described as follows: *"The winning design for the competition for Queen's Park, Chesterfield, Derbyshire, which Barron submitted, again revolved around a large irregular lake with islands. The lake occupied the northern third of the 22.5-acre park, and was set in planted lawns, while the southern part was divided into a circular open area of lawn for*

¹ *Garden History* Volume 22 No 1 1944. Jordon, Harriet. Public Parks, 1885-1914

recreation adjoining a circular cricket pitch, both marked out by the perimeter paths. The main walk linked the two entrances, taking a curving route between the lake and the sports areas." The public park generally represented an idealised landscape separated from the harsh realities of the urban environment. The hallmark of Barron's designs was the formal axis and focal point, as well also credited for successfully combining formal sports uses with more informal recreation, and this has continued to the present day.

10.4 Views and Vistas

The park was laid out with circular walks so that there would be elements of surprise and not all features would be visible at once. The boundaries were disguised by planting, and planting was used to increase the sense of separation and enclosure. Picturesque Tudor style lodges with steeply pitched roofs, tall chimneys and exposed timber work were used as focal points near entrances. The lake added another visual dimension to the park. The sinuous shape and strategically placed islands disguise the view of the inlet and outfalls and add to the illusion of space. Views towards the crooked spire of St Mary's were considered in the original layout. Several vantage points in the park frame the view to the Town skyline, particularly from the bandstand and in front of the cricket pavilion.

The introduction of the footbridge has enhanced views into the park from the elevated walkway. There are few views available into the park from Markham Road, as the cycleway corridor and northern boundary form a screen of vegetation. The Park Road and Boythorpe Avenue walled boundaries have created enclosure from the early days of the park, and this is a feature of the present day layout.

10.5 Entrances and Approaches

Queen's Park is approached from the centre of Chesterfield by a late C20 pedestrian walkway which leads c 190m south from the civic buildings on Rose Hill. This path is carried across the A619 road, the River Hipper, and the site of the LMS railway on a mid C20 concrete footbridge with metal-railed balustrades. The bridge descends into the park adjacent to and immediately to the south-west of the late C19 park lodge, with recent additions, but nevertheless a picturesque half-timbered, two-storey structure under a tiled roof, today used as offices with café and toilet provision. There are further entrances to the park from the east (Park Road), south (Boythorpe Avenue), and west (Boythorpe Road). The eastern entrance comprises a pair of late C19 wrought-iron carriage gates supported by a pair of stone piers with ogee-shaped caps, flanked to the north by a single late C19 wrought-iron pedestrian gate supported by a similar pier. Immediately within the eastern entrance the tarmac walk divides to

enclose a triangular lawn with inset beds for seasonal planting, before joining the principal circuit walk.

The southern entrance is situated on Boythorpe Avenue, some 80m east of its junction with Boythorpe Road, and comprises a pair of tall late C19 cast-iron carriage gates supported by tall cast-iron piers surmounted by ball finials; the gates are ornamented with the coat of arms of Chesterfield in painted cast-iron. The carriage gates are adjoined to the east by a similar single pedestrian gate, which is also supported on a tall cast-iron pier with a ball finial. The entrance is flanked to east and west by tall cast-iron quadrant railings set on a low stone wall (all listed grade II).

There is an additional entrance to the eastern side of the above entrance. This consists of wrought iron gates of a vehicular nature. These gates serve the car park adjacent to the pavilion.

The western entrance is situated on Boythorpe Road c 250m north of its junction with Boythorpe Avenue. This entrance comprises a pair of late C19 ornamental cast-iron carriage gates supported on a pair of square-section piers with flat caps and recessed rusticated panels. A similar single pedestrian gate adjoins the carriage gates to the north and is supported on a similar stone pier which lacks the rusticated panels. Late C19 spear-headed quadrant railings set on a low stone wall flank the gates to the north, while to the south there is a quadrant hedge. To the south of this entrance a late C20 vehicular entrance has been formed from Boythorpe Road giving access to an area of late C20 tarmac car park which extends north, beyond the late C19 park boundary, to the site of a late C19 branch railway. The car park is separated from the park by late C20 fences.

The cricket pavilion comprises a central single-storey block flanked by a pair of half-timbered, two-storey gabled cross-wings.

The recess between the wings is filled by a single-storey painted timber veranda, while the roof line is broken by a spire-roofed cupola. The pavilion was constructed in 1898, and the clock in the western gable installed in 1946.

Tiered seating descends on the western side of the pavilion to the pitch and is partly enclosed by late C19 brick walls surmounted by ornamental cast-iron railings.

Additional park benches have been situated around the ground and are backed by mature lime trees.



The seating terrace

The late C19 conservatory (listed grade II) is of painted timber construction on a brick base with a central gabled entrance to the north and an ogee cupola. The structure comprises a single compartment and the conservatory is not cultivated.

To the north of the conservatory lawns are ornamented with circular beds for seasonal planting; the lawns extend south-west in front of the late C19 park-keeper's house. The park-keeper's house is of half-timber and brick construction and comprises two storeys under a tiled roof; there is a mid C20 extension to the west which partly occupies the site of a late C19 service yard.

The early C20 bandstand (listed grade II) is aligned on the south entrance from Boythorpe Avenue. The bandstand comprises a rusticated stone octagonal drum surmounted by a two-tier ogee pavilion roof supported on slender painted cast-iron pillars.

The pillars are linked by cast-iron balustrades, while the interior is approached by steps to the north. The bandstand (restored late C20) is surrounded by rose beds which are set behind low box hedges, which in turn are protected by low cast-iron

kerb rails. It was constructed in 1920–3 to replace the timber bandstand donated to the park by Alderman Wood in 1894 which stood to the south of the lake.

To the north of the bandstand an open lawn, designed for recreational use, slopes gently down to the lake, while to the north-west the perimeter walk sweeps north, passing children’s play equipment and a C21 5 a side all weather pitch in the south-west corner of the site. A small herbaceous garden at the north-west corner of the recreational lawn; from which it is partly screened by a low conifer hedge. The herbaceous garden is approximately triangular on plan and is enclosed by stone-edged walks to the west, north and south-east. It comprises geometric beds set in geometric panels of lawn.

The lake situated towards the north-west corner of the park is of irregular outline with three small islands planted with trees. The water and the trees and shrubs on the shore are separated from surrounding walks by metal railings, while a mid or late C20 miniature railway runs round the lake. A late C20 pyramid-roofed pavilion stands on a knoll of high ground above the south side of lake c 100m south-west of the north lodge. This stands on the site of the late C19 timber bandstand donated by Alderman Wood in 1894. The small landing stage 100m north-west of the north lodge; this path is flanked to the north by mixed shrubbery and ornamental trees.

A book has been written entitled ‘A Short History of Queen’s Park – For the People of Chesterfield for ever’ which can be purchased from various places around Chesterfield. It includes rare photos and compiles people’s fond memories of the park.

The Council commissioned an artist to decorate a ‘grot spot’ in the park. The artwork immortalises the life of Lalla Lee – ‘The Girl with The Stolen Rose’. A huge mural has been painted on a concrete pillar using spray paints and the help of a local secondary school thus bringing history to life.



The statue of Lalla is in the conservatory and was donated over 100 years ago

10.6 Water courses and Water bodies

The lake is an important focal point in the park, and it dates from the first stages of the laying out in 1892 – 3. The only significant modification to the lake prior to the restoration project was the addition of a causeway and bridge to the western end of the feature. This has now been removed as part of the restoration and to revert to the original Victorian outline of the lake.

The islands were covered by mature vegetation, which has been thinned as part of the restoration project to open views across the lake. The shoreline was mainly reinforced with concrete revetment. This has now been removed and a much more diverse treatment of lake edge has been achieved. There are now areas of bull nosed natural stone kerb, placed stone rip rap (which was a common feature when the lake was originally constructed) and marginal plantings within coir rolls.

10.7 Maintenance and inspection regimes

The structural integrity of all buildings, structures and features are checked daily as part of the site staff duties and any damage reported. Routine electrical and legionella testing is undertaken by the Councils repair service.

The outlet in the lake is monitored daily and items that are found to be blocking the flow of water removed. Water quality is monitored on a weekly basis during the summer season.

10.8 Condition Audits

Heritage condition audits are something to be introduced as a formality and a piece of recorded information. They will be carried out once per year after some baseline data has now been gathered and recorded. Photographic evidence will also be gathered for quality control and standardisation purposes

Heritage features in the park include:	South lodge
Bandstand	The lake
Dovecote	Lalla and the painting on the bridge
Conservatory,	Views and vista's
Entrance gates and pillars	Woodland Walks
North lodge	Planting – native and appropriate species.

Please see appendix 12 for the baseline data.

11. Community Involvement



Interaction with our community is seen as a key component to the success of a park.

Queen's Park serves the immediate local communities of Boythorpe and St Augustine's, which are areas of high social and economic deprivation.

11.1 The Friends of Queen's Park

Unfortunately, at present there is no specific friends group associated with the park. This has largely been due to ill health and ageing demographic of the original group. There is a conglomerate of user groups and leaseholders who are influential and consulted regarding events, activities and work in the Park. It is hoped that they will be able to form a new friends group moving forwards.

11.2 Events and Activities

Being a prime location close to the town centre, Queen's Park continues to attract interest from external event organisers to hold their events in the park along with a host of events organised by the council.



Queen's Park has attracted prestigious events such as The Chesterfield half Marathon, Race for life, Chesterfield Food and Drink Festival, Inflatable world, Pinders Circus and Chesterfield Pride before it outgrew the park and relocated to stand Road

There is a regular programme of brass band concerts during the summer with the occasional outdoor theatre. Proctors funfairs visit the park during school holidays. County cricket (usually in July) includes a 4-day county match and a T20, usually against Yorkshire on the Saturday. Once again and especially for the Yorkshire game the park pulled in bumper spectator crowds more than 8,000 people.

Taken from the Derbyshire county cricket club website:

Chief Executive Simon Storey said: "The Chesterfield Festival of Cricket is a highlight of Derbyshire's cricketing calendar every summer".

"It was a record year at Chesterfield in 2019 and we're delighted to now be able to offer even more cricket at the picturesque ground next summer.

"The support has always been great at Queen's Park, especially for the local fixtures against Yorkshire. A lot of away supporters travel down from north of the county border creating a unique atmosphere and a special event for Members and supporters".



Around the perimeter of the lake runs the narrow-gauge miniature railway line. Tickets can be purchased for 2 circuits of the lake. The season for the train begins at Easter and runs during the week in school holidays and at weekends throughout the summer. Where possible the train will come out in December for a Santa Special.

11.3 Community Art

Commemorating the Queen's Diamond Jubilee, a sculpture featuring historically important dates was installed



A selection of these are as follows:

- 1953 – Everest is conquered on the eve of Her Majesty's coronation
- 1973 – Markham Pit disaster
- 1977 – The Queen visits Chesterfield in Silver Jubilee year
- 1981 – The Prince and Princess of Wales open the Pavements Shopping Centre
- 1997 – Chesterfield FC in the FA Cup semi-final
- 2003 – The Queen opens Chesterfield Magistrates' Court

Members of Chesterfield Action for Arts Forum also placed a time capsule into the sculpture to commemorate life in Chesterfield during 2012.

11.4 Chesterfield Cricket Club

The Club presently operates on a licence renewable on an annual basis. They have shown some interest in a longer-term lease agreement to give some security of tenure and have shown their commitment by making their own investments within the building itself.

This could enable the Club to secure other grants enabling the further development of cricket in Chesterfield. The CCC has suggested that this would also be an opportunity to explore the potential for the Club having devolved responsibility for the cricket ground.

Chesterfield Cricket Club offers coaching and sport development to young people in cricket and does work with feeder schools in the area.

The club are often keen for additional matches to be played at Queen's Park to showcase the ground. For example, there have been many twenty20 matches since the restoration and others planned for this year. Also, the club are keen to host the Derbyshire premier cup final. In conjunction with this feature match some sports development money will be used to encourage more junior cricket.

The club take a slightly more active part in the preparation of the ground and in tandem with this the Council has allowed members of staff involved with the cricket to work on a more flexible basis to support the club through the season. A mower has been placed at the disposal of the club as well as other specialised equipment. More recently the club have been developing a mixed and a girl's cricket team to bring about an all girls team in the future.

The club are always striving to be active in the community and are working with local schools and the public to promote the game of cricket and encourage participation. With the return of county cricket, the score box had caused problems due to its dilapidated nature. The cricket club successfully acquired funding to upgrade it.

Chesterfield Cricket Club contributed towards the purchase of a moveable practice net on wheels which offers a much safer option during this practice.

11.5 Comment and Complaints

It is important to us that people know what level of service to expect and if they are not completely satisfied, how to complain.

There are several ways that members of the public can contact the council. Along with the traditional phone call, other ways to get in touch include the following:

A complaints, compliments, and comments (3 C's) procedure

The website continues to give customers a platform to make any comments or submit an enquiry. There is a 'chat' facility via the website.

As with the explosion of the popularity with social media, the council have embraced this and have active Facebook and Twitter accounts. Various comments are monitored via these platforms and passed onto the relevant officers.

11.6 Existing and potential conflicts of interest

In the park byelaws cycling remains mentioned as: *(ii) A person shall not except in the exercise of any lawful right or privilege ride any bicycle, tricycle, or other similar machine in any part of the ground.* Discretion can be applied when dealing with toddlers riding small bikes and not posing any potential conflict with other park users.

Food left for wildlife becomes litter and encourages vermin. People like to feed the waterfowl, but the leftovers are food for rats. We actively encourage people to reduce the amount and type of food fed to the ducks.

Vandalism and groups of young people pose a potential fear of crime with other park users and therefore may deter legitimate use. Local PSCO's are deployed to the park, and 'after hours', to act as a physical presence to discourage any unsavoury activity.

Cricket

During the cricket festival in particular the event set up does occupy a lot of the park. Members of the public take umbrage if they cannot walk their usual route as it is closed off for match play. In addition to this much of the amenity grassland is effectively closed to make way for car parking for the spectators of cricket. As mentioned earlier the closure of the play area has caused some upset. The cricket

festival has been a permanent feature in the park for many years and there is a move towards tolerance as it is a temporary inconvenience.

12. Environmental Sustainability



The council will strive to be as environmentally sustainable as is possible. The environment is taken very seriously, and several corporate motions have been agreed to achieve this.

- In 2019 the council declared a climate change emergency in the borough.
- February 2020 saw the council approve the Climate Change Action Plan. It features 39 steps that will reduce emissions and encourage others to change behaviours to help achieve the net zero target.
- A climate change officer has been employed to deliver this
- The leader of the council has signed a pledge that aims to make Derbyshire a net zero county by 2050. She said *"I am proud to be signing the pledge on behalf of the borough of Chesterfield. We have recently approved our Climate Change Action Plan that will help us ensure our council is carbon neutral by 2030 and the borough is net zero by 2050"*.
- The council has made a pledge to cut the use of single use plastics from its operations as part of the authority's climate change commitment by reviewing

its own practices and seek to remove single use plastics from its service delivery and supply chain over the coming years.

- The Green Spaces team have joined forces with the Chesterfield Climate Alliance to work together in improving and increasing biodiversity in our parks.

12.1 Quality and Environmental Policy

Our Environmental Policy highlights that the Policy itself is the principal element of an Environmental Management System and shows what the Council is doing and that it is regularly reviewed.

We will minimise the negative environmental impact of all our activities and services throughout their lifecycle. We will set and review our objectives and targets in line with internal procedures, aiming to:

- Improve energy efficiency
- Reduce emissions to air
- Reduce water usage
- Increase environmentally preferable procurement
- Improve waste management
- Protect and enhance Biodiversity

12.2 Procurement

When purchasing bedding plants, we want to ensure these are environmentally sourced. The tender document includes the following:

Plant material shall be raised in good quality, open growing media only and be sourced from established suppliers ensuring that any such growing media is not derived from protected sites such as S.S.S.I's. The contractor may use his/her discretion on the type and forms of growing media to be used however this shall be no less than a 60% peat free bedding mix containing 2Kg of Osmacote and 750g of base fertiliser per cubic metre, with a Ph of 6. This will not relieve the contractor of his/her requirements to provide the quality specified in the contract documentation.

12.3 Banned Products

From ethical and personal safety reasons the council are committed to products that don't test on animals or that could cause harm to humans or the environment. A list of such items can be found in appendix 13.

12.4 Greenprint for Chesterfield

The 'Greenprint for Chesterfield' is a biodiversity action plan for the borough, produced in conjunction with Derbyshire Wildlife Trust. It sets out which habitats and species are particularly important in Chesterfield and acts as a framework for the conservation of biodiversity in Chesterfield.

<https://www.chesterfield.gov.uk/planning-and-building-control/planning-policy-and-the-local-plan/evidence-base/greenprint-for-chesterfield.aspx>

12.5 Arboriculture

Some 836 trees and large shrubs of varying sizes and condition were tagged as part of the stage one H.L.F. study. Some of the early plantings survive and these trees are often fine specimens of high heritage and amenity value. Species that survive from the early days of the park include lime, horse chestnut, plane, beech, and holly. Other trees have been planted as the park has developed, and this has helped to diversify the species and age profile of vegetation. Some trees are self-sown and may not be growing in the desired location or too close to buildings. These trees are typically Sycamores, Ash and Elm. Conifers were a feature of the original layout and more recent specimen plantings have followed this tradition. Short lived Cypress trees have been planted in large numbers to provide hedges or screens, and these species appear alien in the park setting. Large mature holly trees are a feature of the park, and they often form an evergreen backdrop to deciduous trees. Evergreen shrub beds containing Laurel, Yew, and Viburnum add to the structural planting around the boundaries together with ornamental trees such as birch, maples, whitebeams cherries, contorted willows, alders and laburnums. Alders are a feature of the river Hipper corridor, and these trees are amongst the tallest specimens in the park, although they become a potential hazard as they decline.

The age of mature trees appears to be between 70-100 years. The pattern of the small leaved limes around the central open spaces is particularly distinctive; the distribution of mature trees generally is clustered around the lake and northern boundary as these areas have changed relatively little over time.

The tree lined cycle path along the northern boundary together with the denser area of vegetation within the park forms a "woodland strip". It is typical of most linear urban riparian areas. It largely comprises Alder and Sycamore. The area provides habitats for songbirds and could potentially form part of a "wildlife corridor" through the most urban part of the borough. The responsibility for trees within the river corridor lies with the Environment Agency.

A recent tree survey has identified that some large trees possibly date back to the original planting (such as horse chestnuts, planes, weeping ash, lime, beech and holly). Other species such as cypress, cherry, maple and sycamore have been introduced more recently into the park, along with other exotic specimens. Conifer planting is indicated on early plans and Barron favoured the use of conifers in his schemes.

There is no formal Council tree policy for either Council owned trees or TPO trees at present. We consider arboriculture operations on trees in parks and open spaces on the individual tree's amenity value, past management and risk assessment, including presence of structural faults and symptoms of disease etc, etc. Pruning is undertaken to BS39988.

12.6 The Lake

The lake was fed from an inlet at the west end of the lake. This inlet was abandoned following placement of the dredged silt at the western end of the lake. Land drainage installed as part of the restoration project issues directly into the lake. The outfall, visible at the eastern of the lake, falls into the River Hipper that runs adjacent to the park's northern boundary.

In the past the lake has experienced problems with seasonal growth of toxic blue green algae and nutrient enrichment from wildlife deposits. Barley straw has been put into the lake by a company called Aquascience to help eradicate the algal blooms. This did prove effective but costly. As part of the restoration works three lake aeration units were installed to maintain oxygen levels within the water body.

Water quality is much improved, and the algal blooms have been abated. The aeration units also help the resident fish stocks by maintaining good levels of oxygen that helps the fish during prolonged spells of fine weather. The algal blooms did return in the summer of 2006 and this did disrupt the hire of rowing boats. Although the aeration units did help, the re-introduction of barley straw is proving favourable.

The council have worked with some local angling clubs to remove of some of our fish stock. After being tested and have found to be disease free, a selection of the largest fish were removed and re-located to other water bodies throughout the borough.

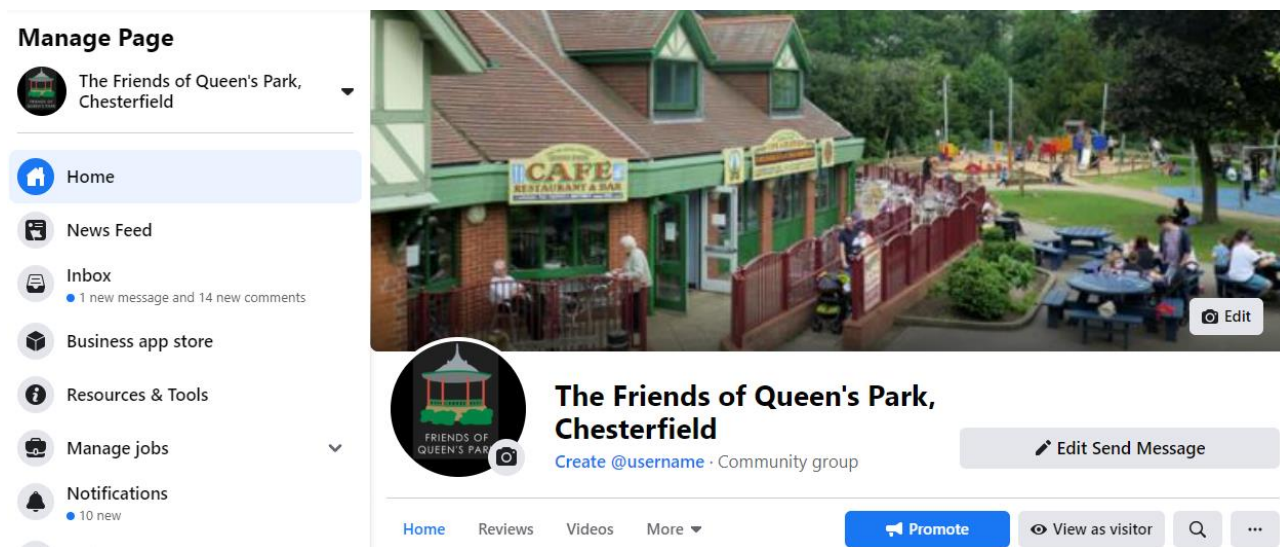
13. Marketing

13.1 Rebranding

The council has had a corporate re-brand. This includes a new logo, and a variety of corporate colour options, which are incorporated into letter heads, the website, staff uniforms and vehicles, and all other forms of corporate publicity and promotion. The old branding was considered out of date and wasn't easily transferrable to web communication.

13.2 Publicity

The Green Spaces team are pivotal in promoting the park. It is important to praise our great achievements, and to promote various activities and events in the park. Celebrating success can be included in the quarterly 'Your Chesterfield' publication which is distributed to all households in the borough. Social media in proving a useful tool in publicity.



The notice board in the park continues to keep the public up to date with events and activities. The Councils' website will contain a link to the Queen's Park page. This contains information about the park and its facilities, its history, operational matters, forthcoming events and contact details.

Coronavirus (COVID-19) - We are now in a national lockdown: stay at home. Find out how it is affecting our services.

Queen's Park

- This section:
Queen's Park
- [Bandstand](#)
 - [Conservatory](#)
 - [Friends of Queen's Park](#)
 - [History of Queen's Park](#)
 - [Play areas](#)
 - [North Lodge - Café](#)
 - [Cricket in Queen's Park](#)
 - [Chesterfield Cricket Club](#)
 - [Room hire](#)
 - [Miniature train](#)

Please click on the links on the left-hand side to navigate your way round the Queen's Park.



Last updated on 12 September 2017

CONTACT

Use [My_Chesterfield](#) - our secure online customer portal - to report problems or request services.

Phone

01246 345345

Text only

07960 910264*

By post

Chesterfield Borough Council
Town Hall
Rose Hill
Chesterfield
S40 1LP

* Our text number is monitored during opening hours and doesn't accept voice messages

[Out of hours and en](#)

[Advisor Offline](#)

13.3 Future development and marketing

Visions

Queen's Park fulfils a variety of different roles and forms a fundamental part of the urban environment of Chesterfield. Through the development of the park, opportunities arise to test the delivery of re-shaped services and to build on the existing qualities of the park.

Through the park we can deliver: -

Improvements in the Quality of Life – The Park can enhance the quality of life for the citizens of Chesterfield by providing a locally accessible and attractive park with opportunities for both passive and active recreational pastimes.

Equality of Opportunities – To ensure that all citizens of and visitors to Chesterfield have reasonable access to the park whatever their age, sex or ethnic origin and wherever they live within the town. It should be noted that whilst Queen's Park fulfils

the role of a borough park, it also serves the local communities of Boythorpe and St Augustine's which are areas of high social and economic deprivation.

Health, Well Being, and Environmental Awareness– The Park provides opportunities for people of all ages to lead an active and healthy lifestyle and to develop an interest, understanding and appreciation of the natural environment.

Developing Partnerships – The Park is a catalyst for providing opportunities for strengthening support and partnerships with other agencies (e.g. Macintyre), to achieve optimum use of available resources. The Park provides opportunities for establishing closer links with local community, interest and voluntary groups.

Tourism – The Park contributes to the quality and breadth of a visitor's experience of the town. The tourism product is not restricted to accommodation establishments and the Tourist Information Centre but to Chesterfield's whole infrastructure. Aspects of the town that are appealing to tourists, such as well-maintained parks and attractive floral displays, are also likely to contribute to a better quality of life for local people. It is, therefore, important that the quality of Chesterfield's tourism product is of the highest standard. The park is included as a key facility that can contribute towards making the town centre an increasingly safe, vibrant, and attractive place to live, work, visit and invest.

Sustainability – The Park provides an opportunity to carry out development which meets the needs of the present without compromising the ability of future generations to meet their own needs. The refurbishment built on the historic fabric of the park, which is more than 100 years old and has recreated a park in the spirit originally established at Queen's Park but with modern relevance and vitality for the next 100 years. The park also provides opportunities to manage and enhance the natural environment, which is a vital part of Local Biodiversity in accordance with the Chesterfield Greenprint.



Through the development of the park, opportunities arise to test the delivery of re-shaped services and to build on the qualities of the park. Through the parks renaissance we aim to:

- Establish closer links with the local community, interest, and voluntary groups.
- Develop tourism links and promote Chesterfield using the park facility as a vehicle
- Encourage broader use of the park and target those socially excluded.
- Provide accessible facilities with a range of opportunities for both passive and active recreational pastimes
- Maximise biodiversity through sensitive habitat creation and management.
- Deliver educational benefit, particularly for children and young people.

14. Management

14.1 Corporate Strategies

Working for a Safer, Cleaner, Greener, Thriving community

Working in partnership with other agencies our long-term priorities are:

Putting our communities first

- A clean, green, and attractive Borough, where our open spaces and built heritage are valued.

- A thriving Borough, where everyone has access to the jobs, training and support they need.
- A healthy and safe Borough, where the community is free from the fear of crime.
- An inclusive Borough, where everyone feels valued and has equal and fair access to local services.
- A place where everyone has fair access to a decent and affordable home.

A pictogram showing the management responsibilities is in appendix 14

14.2 Parks and Open Spaces Strategy

The Vision for Parks and Open Spaces:

To ensure that Chesterfield has an accessible network of high-quality parks and open spaces which puts good health and an excellent quality of life within reach of everyone who lives in and visits Chesterfield

The strategy has been a catalyst for realising a wide range of improvements in terms of quantity and quality of parks and open spaces.

The Friends of Parks groups have played a significant role in attracting external funding to drive improvements and attracting more people to use their local park.

- We now have master plans and management plans for our main parks and hold four prestigious Green Flag awards.
- Brearley Wetlands, Norbriggs Flash and Blue Bank Pools have been declared as Local Nature Reserves and large tracts of woodland are now being actively managed and made more accessible.
- A range of challenging and innovative play equipment and outdoor gyms, multi-use games areas and skate parks have sprung up across the Borough.

Other notable achievements include:

- An eco-friendly Caravan Club site at Pools Brook Country Park
- Multi-user routes e.g. Somersall
- Chesterfield Canal restoration and the Trans Pennine Trail link
- Establishment of Chesterfield In Bloom
- Gold award in East Midlands In Bloom
- Entry as a UK finalist to the Britain in Bloom campaign
- Grade 2* Heritage listing for Queen's Park

14.3 Strategic Objectives

To achieve this vision for Chesterfield's parks and open spaces we will:

- Prioritise investment in Parks and Open Spaces
- Use resources effectively and sustainably
- Increase the use of Parks and Open Spaces
- Effectively engage with our communities and partners

14.4 Local plan commitments.

The Borough of Chesterfield Local Plan designates Queen's Park as a park or open space (PR1), a conservation area (EN31/EN32) and is also an Historic park and garden (EV33).

PR1 - Planning permission will not be granted for development which would result in the loss of public or private open spaces...this is unless it is associated with the provision of leisure or recreational uses of an open nature.

Queen's Park is one of ten Conservation Areas within Chesterfield Borough. Policy EN31 and EN32 (relating to buildings of architectural and historic interest) in the Chesterfield Local Plan includes guidance for planning applications as follows:

In addition to the following policies, the Borough Council will have regard to the advice in PPG15, including reviewing the boundaries of existing Conservation Areas and, where appropriate, designating new Conservation Areas, based on Conservation Area Character Appraisals.

Policy ENV33 relative to Historic Parks and Gardens states that 'Planning permission will not be granted for any development which is likely to have a detrimental effect on the character or setting Queen's Park.

Queen's Park is included on English Heritage's National Register of Historic Parks and Gardens with a grade 2 status. The effect of development proposals on a registered park or garden or its setting is a material consideration in the determination of planning applications. The Queens Park heritage scheme has improved the amenity and historical integrity of the park.

14.5 Other Corporate commitments

A more detailed description of the policies can be found in appendix 15.

Through careful management, we aim to ensure that the future potential of the park is realised and that the heritage expectations are sustained.

14.6 Business and Resource Planning

Financial Plan

A breakdown of the Current Revenue costs Future Revenue with income at future projected levels for the park is attached in appendix 16.

Revenue Generation

A stand-alone account for the park was set up bringing together income and expenditure for the park, which was split across several different service areas

We currently generate income from the following sources:

- The pavilion meeting room
- Miniature Railway
- Fairs
- Bouncy Castle
- Chesterfield Cricket Club
- The Café franchise
- Lease of South Lodge
- Ice cream concessions
- Other various park lettings for events etc.

A growth budget to cover increased expenditure arising from the return of first-class County Cricket to the park was met from central council resources.

Catering

North Lodge boasts a 40-seater café/restaurant. A catering franchise has been let to Fredericks of Chesterfield and this commenced in spring 2006. Since their occupation they have developed and sustained the café as a business.

The café's operation is a key aspect of the park and has played a significant role in the achievement of increased use from the improved facilities. The quality of the food and service offered is in tune with the image of Queen's Park. Healthy food options have been formed part of the menu.

The cafe the peaks and troughs of the daily and weekly business demands to maintain a service offering good quality, popular food with a price range that allows all visitors including those on limited incomes to enjoy a meal.

Specialist ice cream is regularly being developed such as Christmas pudding flavour, pomegranate and raspberry ripple flavour and Bakewell Pudding flavour, which has national press coverage.

Sponsorship

All types of businesses, including major department stores, small retailers, prestige hotels and pubs, banks, offices and industrial units are now working with the Borough Council in extending Chesterfield's floral image in Chesterfield in Bloom.

Maintenance Programme

A breakdown of the Property Repairs and Maintenance Programme is attached in appendix 17.

Property Repairs and Maintenance

The property repairs and maintenance fund has been increased to reflect the higher level of specification and range of materials within the park.

Green Spaces Officers have a key role in monitoring and steering the repairs and maintenance programme in order that attention to detail and quality is sustained and accorded due priority.

In terms of replacement and rectification each site is subject to a 10 year replacement schedule. The costing, including allowances for inflation are calculated for the next ten years. After 5 years, these are reviewed and again allowances for the next ten years are made. These figures are then divided by ten, so the annual contribution is stable. Each year an appropriate percentage increase (which may or may not be in line with inflation) is added on.

14.7 Action Plan 2017 – 2022

Key Vision:

With partners and stakeholders, provide a safe, clean and well maintained park at the heart of Chesterfield to benefit people who live in, work or are visiting the town and providing a variety of enjoyable and socially inclusive activities and facilities for activity, in a sustainable manner paying regard to the heritage of the park.

Key aim 1: A Welcoming Place				
Objective	Target deadline	Resource / Lead	Actions	Outputs
Develop new entrance signage and interpretation	Dec 22	Friends of Queen's Park & Green Spaces Team	Design and content to be finalised to include 3G sports pitch	Improves visitor experience.

Key aim 2: Healthy safe and secure				
Objective	Target deadline	Resource / Lead	Actions	Outputs
Review vehicle movement in the park	Ongoing	Green spaces team	Assess the necessity for frequent vehicular movement	More people friendly, removes a conflict of interest
Reduce ASB and vandalism	Ongoing	Green spaces team & Community Safety team	Work with community safety, police and youth service to address ASB and alcohol-fuelled vandalism	Reduced building repair costs. Public sense of safety improved.
Park Inspections	Weekly Annually	Green spaces team & Facilities Maintenance Section	Routine and annual full park inspection looking at health and safety	Prevention of hazards ensure staff and visitor safety. Reduction in claims.
Building inspections	Quarterly	Green spaces team & Facilities	H&S of the building assessed	Prevention of hazards ensure staff and visitor

		Maintenance Section		safety. Reduction in claims.
--	--	---------------------	--	------------------------------

Key aim 3: Clean and well maintained				
Objective	Target deadline	Resource / Lead	Actions	Outputs
Enhancement of horticultural displays at Park Road, Boythorpe Road and Boythorpe Avenue entrances	March 2022	Green spaces team	Sensitive preparation including the removal of undesirable vegetation, soil amelioration and planting with herbaceous plants and bulbs.	Park Road entrance complete December 2017 planted with vibrant herbaceous perennials and spring bulbs.
Renovation of Bandstand rose garden.	March 21	Green spaces team	Removal of existing roses, soil cultivation and amelioration/fertilising followed by structured replanting.	Visual amenity improvements.

Key aim 4: Sustainable				
Objective	Target deadline	Resource / Lead	Actions	Outputs
Reduction of pesticides and peat	Ongoing	Green spaces team	Continue to minimise the use of pesticides and eliminate peat. Recycling of woodchip and leaf collection into shrub borders	More environmentally friendly
Develop resistance to the likely	Ongoing	Greenspaces Team	Selecting a variety of appropriate exotic and native	Greater resilience of tree and plant stock.

effects of climate change and plant disease			tree and plant species in new schemes to ensure robustness. Avoiding planting species that 'host' pathogens subject to statutory control (i.e. Larch, Rhododendron-Phytophthora)	
Seek opportunities to increase the ecological value of the park where compatible with other objectives	Ongoing	Greenspaces Team	Creation or retention of aerial and grounded deadwood in trees (where safe to do so) to provide microhabitats for invertebrates. Protect and create potential bat roosts within trees. Creation of the wildflower meadow adjacent to the 3G pitch to create provision for pollinators	Enhanced wildlife value.

Key aim 5: Conservation of Heritage				
Objective	Target deadline	Resource / Lead	Actions	Outputs
Trees - programme of inspections based on priority and heritage value	Ongoing	Greenspaces Team	Ensuring that the trees are inspected regularly with a view to remove any dangerous ones and replace in accordance with historical	Protect and enhance the heritage value of the park

			landscape design where appropriate.	
--	--	--	-------------------------------------	--

Key aim 6: Community involvement – meeting local needs				
Objective	Target deadline	Resource / Lead	Actions	Outputs
Partnership with the Police	Ongoing	Community safety team	Liaison on a regular basis to combat ASB, sharing information and implement target hardening.	Good communication systems in place

Key aim 7: Marketing				
Objective	Target deadline	Resource / Lead	Actions	Outputs
Interpretation & visitor material	April 2022	Greenspaces Team, FOQP	To produce a visitor leaflet and online resources	Promotion of the facility to a wider audience. Enhanced visitor experience.
Promotion	Ongoing	Greenspaces and communication s team	Positively promote the park in terms of writing press releases for activities, events or other good news stories	Increases people’s awareness of the things that happen in the park
Promotion of the Friends group	Ongoing	FOQP	Work in conjunction with the Greenspaces Team to keep people aware of their existence	Attract new members.

Key aim 8: Management				
Objective	Target deadline	Resource / Lead	Actions	Outputs
Smarter working	Ongoing	Greenspaces Team	Move from frequency based work scheduling to output/quality system	More time/cost effective working. Higher maintenance standards. Staff ownership and accountability.
Commercial Opportunities	Ongoing	Greenspaces Team	Promotion of the site as a commercial event venue. Commercially driven lettings for activities, events, sports and concessions.	Increased income. More sustainable service.

The team plan for the green spaces team is currently being developed. For the development of the park in the future, the items from the team plan will be built upon to:

- Provide a balanced programme of quality leisure activities for the enjoyment of all our communities and visitors to Chesterfield.
- By assuming the role of enabler, provider, partner and co-ordinator develop opportunities for and encourage greater community engagement in a wide range of leisure activities.
- Balanced against the need to sustain provision, set charges at levels that will encourage the maximum usage of and accessibility to leisure activities.
- Work with partners to promote and encourage healthy lifestyles.
- Seek to secure sustainable improvement in the quality and variety of leisure facility provision within the borough.
- Community Safety – To promote S17 of the crime and disorder act for reducing crime and disorder
- Sustainability (EMAS) – To promote sustainability and take actions under EMAS

The cricket club and the Friends of Queen's Park have a big impact on the park in various ways. The Development officer works closely with both so that action plans can be developed and incorporated within this main plan.

By carrying out these items the main aim is that the following knock on effects will happen:

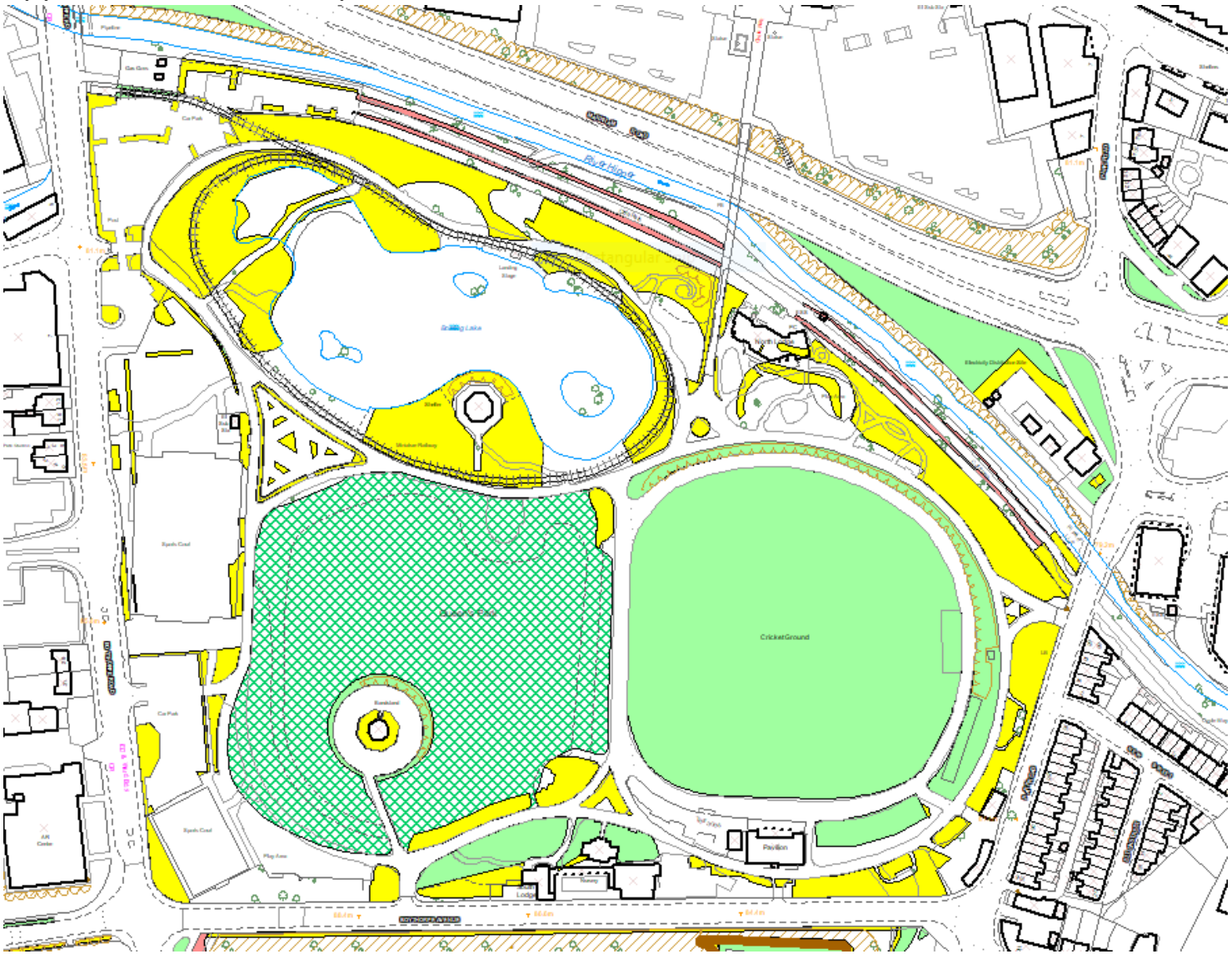
- An increase in the number of people using the park
- Numbers of people attending the events and activities programme
- A reduction in vandalism and anti-social behaviour
- An increase in the use of the boats and train
- Numbers of people given access to new cultural opportunities/facilities
- Numbers of young people and children involved in educational projects
- Numbers of local community, interest and voluntary groups supported
- Financial targets for income and expenditure are met

Achieving and realising these targets should lead to a well-used and much loved park for the future

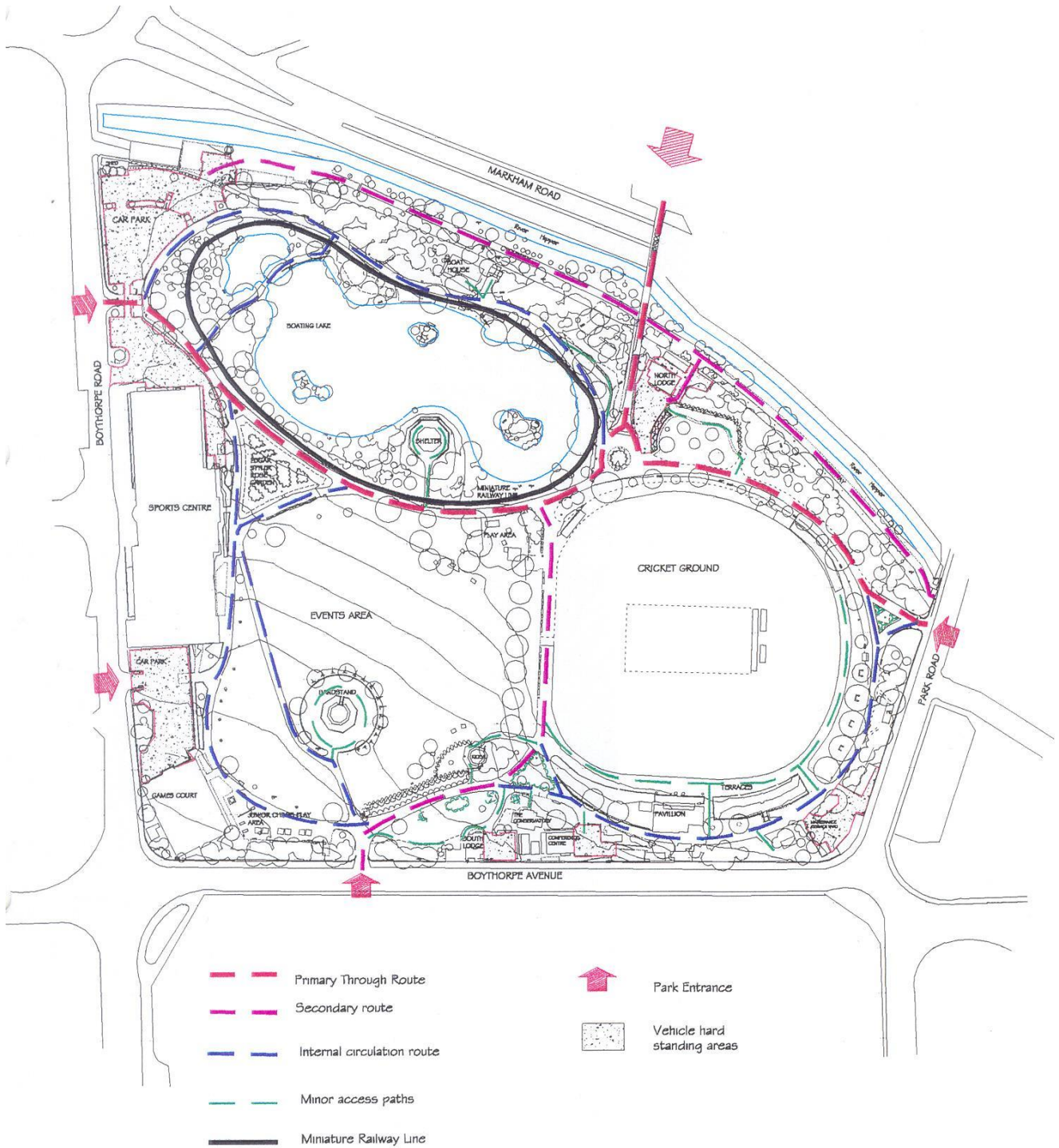
.


Appendices

Appendix 1 - Ownership Plan

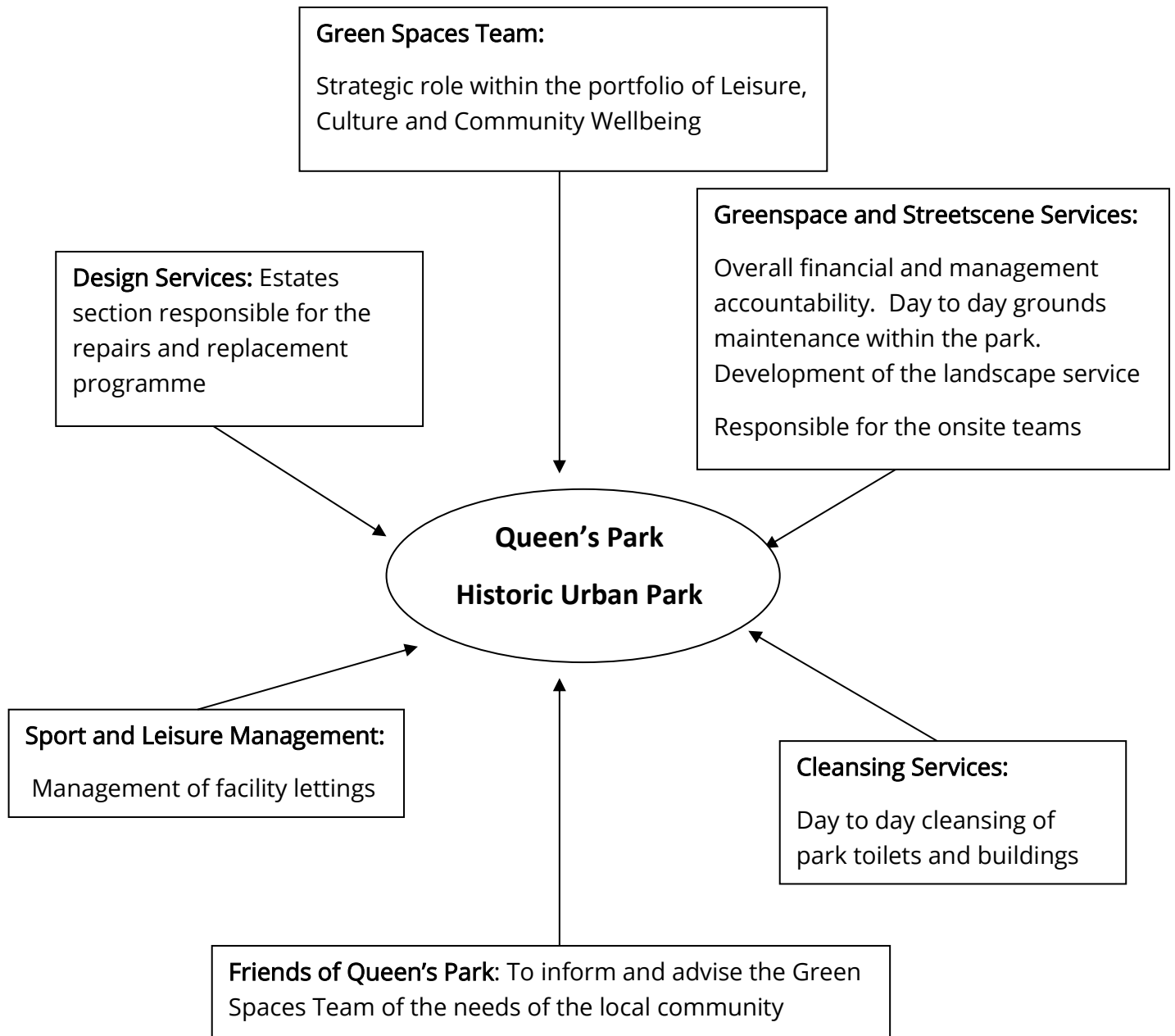


Appendix 3 – Hierarchy of Routes



ASHMEAD . PRICE	QUEENS PARK. CHESTERFIELD Landscape Survey and Management Plan	Scale 1:2500 Date : July 2000
CHESTERFIELD BOROUGH COUNCIL	Title : ACCESS AND CIRCULATION	NORTH  FIGURE 4

Appendix 4 – Responsibility for the provision of services



Appendix 5 – Tree Trail activity

(to save space, the boxes for pictures have been reduced)

Queen's Park Tree Trail Meet a Tree

On the tree trail there are 6 trees. Firstly, we will identify the tree, and then we will do the following tasks.

Trees: Ginkgo / Maidenhair tree
 Liquidambar / Sweet Gum
 Horse Chestnut
 Lime
 Mulberry
 Redwood / Sequoia

Measure its trunk circumference

Measure its height

Draw a picture of the tree

Collect a leaf. Draw round a leaf (and label)

Rub the bark, is it rough or smooth? Do a bark rubbing.

Name of your tree:	
Circumference in inches:	

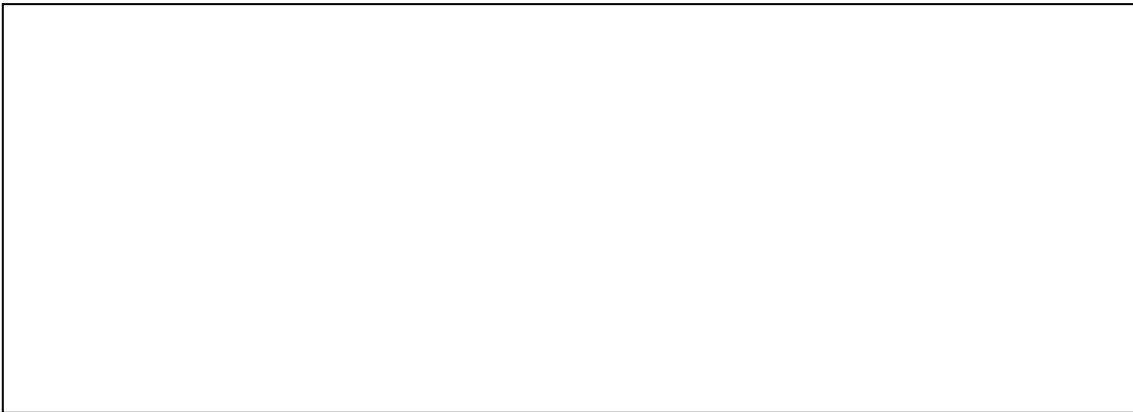
Name of your tree:	
Height of tree	

PLEASE DRAW THE PICTURE OF YOUR TREE HERE



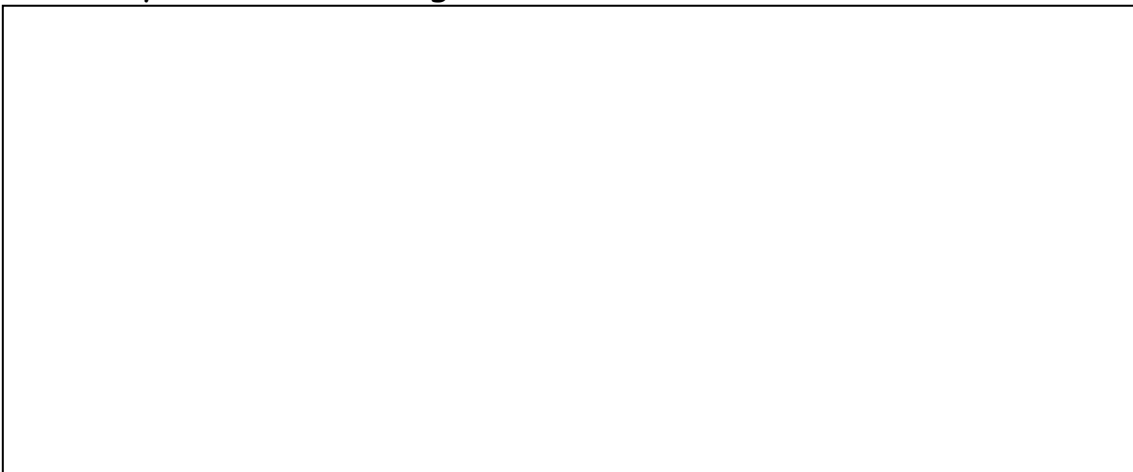
Name of tree:

PLEASE DRAW ROUND A LEAF HERE



Name of tree:

Please do your bark rubbing here:

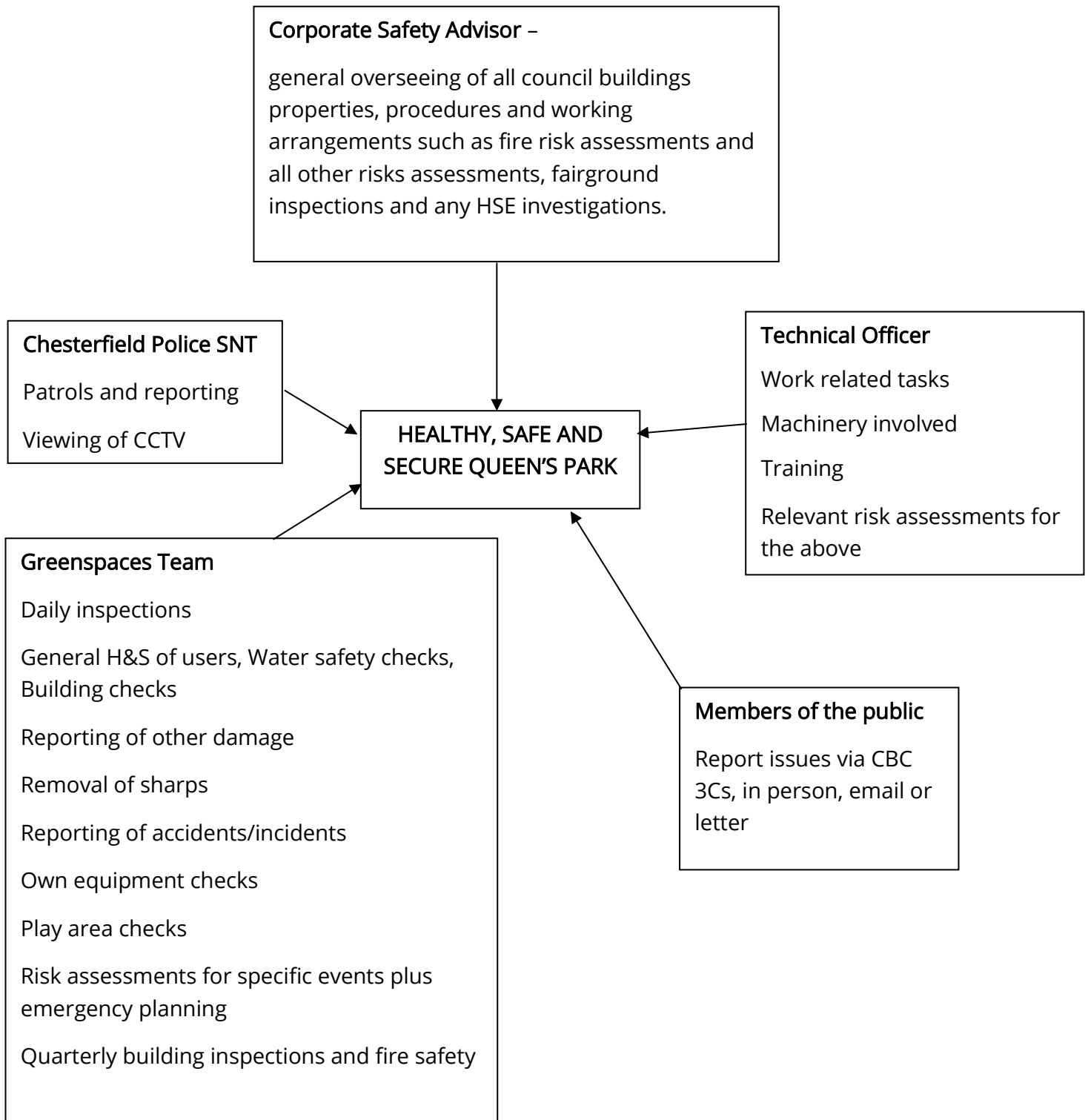


Name of tree:

Is the bark ROUGH or SMOOTH? (please circle)

Or give another descriptive word:

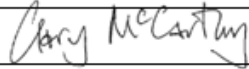
Appendix 6 – Health and Safety Responsibilities







Appendix 7 – Generic Risk Assessment






C.B.C. RISK ASSESSMENT FORM

SELECT ASSESSMENT TYPE. DELETE TYPE N/A.	ASSESSMENT TITLE	ASSESSMENT NO.	D003	DIRECTORATE:	Environment
WORKPLACE:	Queens Park	ASSESSMENT DATE:	Initial Assessment: N/A	SECTION:	Environmental Services
TASK:	Depot Assessment	ASSESSED BY:	Gary McCarthy	SIGNATURE:	
WORK EQUIPMENT:	General Working Environment	REVIEW DATE:	27/01/2021	SECTION MANAGERS:	


WORKPLACE/TASK /EQUIPMENT. ASSESSE	HAZARDS IDENTIFIED	WHO IS AT RISK	EXISTING CONTROL MEASURES	RISK RAT. (L/M/H)	ADDITIONAL CONTROL MEASURES	RES. RISK (L/M/H)
General Working Environment  	Yard Entrance & Work Area <ul style="list-style-type: none"> • Traffic Movement • Collision with Static or Moving Objects • Collision with public • Collision with bikes, buggies, prams, etc. • Loading & Unloading of Vehicles • Collision with Contractors & Special Event Visitors • Slips & Trips 	Employee Public Contractors Vehicles	Only trained staff are allowed to use equipment Working environment speed limits MUST be followed to at all times Vehicle drivers take care whilst entering / exiting yard Visual warning beacons are fitted on some vehicles & are on when vehicle is moving ALL staff wear hi-visibility clothing whilst in working environment	Medium (2 * 5)	Investigate the feasibility of specific loading & unloading area	Medium (2 * 5)

 	<p>Top Shed (Small Machinery Store)</p> <ul style="list-style-type: none"> • Slips & Trips • Cuts & Abrasion • Collision with Tools & Equipment • Explosion • Electrocution • Fire • Burns • Contamination • Spillage's 	<p>Employees</p> <p>Environment</p>	<p>ALL staff are made aware of good housekeeping requirements</p> <p>Restricted access to area, shed is locked when not being used</p> <p><u>Clear</u> defined walkways</p> <p>Washing facilities available at site</p> <p>ALL chemicals are stored in correct containers & are locked in chemical storage bins</p> <p>Limited number of chemicals stored</p> <p>COSHH Assessments & Data sheets available in shed</p> <p>Spill kits are at site to deal with spillage, staff trained in the use of spill kits</p> <p>All spillages are recorded on incident forms</p> <p>Fire extinguishers available at site</p> <p>ALL equipment is Portable Appliance Tested every 2 years</p> <p>All materials are stored safely</p> <p>Fuel is stored in machines & fuel cans that are locked in fuel bins</p> <p>Warning signs fitted to door</p>	<p>Medium (3 * 3)</p>		<p>Medium (3 * 3)</p>
--	---	-------------------------------------	--	-----------------------	--	-----------------------

  	<p>Boat Shed & Diesel Store (Tractor Store)</p> <ul style="list-style-type: none"> • Slips & Trips • Cuts & Abrasion • Collision with Tools & Equipment • Explosion from Fuel • Electrocution • Fire • Burns • Contamination • Spillage's 	<p>Employees</p> <p>Environment</p>	<p>ALL staff are made aware of good housekeeping requirements</p> <p>Restricted access to area, shed is locked when not being used</p> <p><u>Clear</u> defined walkways</p> <p>Washing facilities available at site</p> <p>All staff are trained in the use of the diesel pump & follow safe guidelines on fueling & refueling</p> <p>Access to the diesel pump is limited (Locked Cage)</p> <p>Diesel barrels (45 gallon) are stored on top of a bund to contain any</p>	<p>Medium (3 * 3)</p>		<p>Medium (3 * 3)</p>
---	---	-------------------------------------	---	-----------------------	--	-----------------------

Medium (3 * 2)

	<p>Fire</p> <p>Fire Action Procedure If You Discover A Fire</p> <ul style="list-style-type: none"> • Sound the alarm – Verbal Command (FIRE) • Dial 999 to call the Fire Brigade • Attack the fire if <u>possible</u> using the appliance provided (Only if Trained & Safe) • Vacate the building via the nearest Signed Exit Route • Notify Supervisor / Operations Manager <p>On Hearing <u>The</u> Fire Alarm</p> <ul style="list-style-type: none"> • Vacate the building via the nearest Signed Exit Route • Close ALL doors behind you • Report to the Fire Assembly Point – SIDE OF CRICKET PAVILLION • Do Not re-enter the building or leave the site until instructed to do so by Supervisor / Operations Manager <p>DO NOT TAKE ANY RISKS</p>	<p>Employees</p> <p>Environment</p>	<p>Queens Park depot has had a fire risk assessment completed</p> <p>All electrical equipment is Portable Appliance Tested annually</p> <p>Queens Park depot has not got a fire alarm system in place, verbal notification if given in case of fire</p> <p>ALL staff are aware of the Fire Action Procedure</p> <p>Fire extinguishers are provided & are serviced on an annual basis by Chubb</p> <p>Full fire drills / evacuations to be carried out every 6 months</p> <p>Annual fire safety training is given all staff</p>	<p>High (3 * 5)</p>		<p>High (3 * 5)</p>
	<p><u>Anti Social</u> Behavior</p> <ul style="list-style-type: none"> • Physical Injury • Psychological Damage 	<p>Employees</p> <p>Contractors</p>	<p>Staff are required to report ALL incidents in accordance with departmental procedures</p> <p>Mobile phones supplied to each team & can raise issues direct to Police on Helpline Number 101 or 0345 1233333 for <u>Non Emergency</u> & 999 in an Emergency</p>	<p>Medium (3 * 2)</p>	<p>Staff to be provided with training in dealing with <u>Anti Social</u> Behavior issues</p>	<p>Medium (3 * 2)</p>

	<p>C.O.S.H.H.</p> <ul style="list-style-type: none"> • Spillage's • Burns • Irritation • Fumes • Explosion 	<p>Employees Contractors Environment</p>	<p>ALL staff attend COSHH training as part of the Councils induction process</p> <p>COSHH Assessments are carried out on ALL products</p> <p>COSHH Assessments & Material Data Sheets are kept on site – Located in Top Shed</p> <p>ALL staff are issued with appropriate P.P.E. for chemicals</p> <p>ALL chemicals are stored in locked chemical safety bins</p> <p>Small amounts of chemical are stored</p> <p>Chemical stored in appropriate containers</p> <p>Chemicals mixed & applied as per manufactures recommendations</p> <p>Spill kits are available at site to deal with spillage's, staff trained in the use of spill kits</p> <p>All <u>spillage's</u> are recorded on incident forms</p> <p>Frequent toolbox training is given to ALL staff</p>	<p>Medium (2 * 3)</p>		<p>Medium (2 * 3)</p>
---	---	--	--	---------------------------	--	---------------------------

RESIDUAL RISK RATING

SEVERITY	VALUE	LIKELIHOOD
NO INJURY	1	VERY UNLIKELY
MINOR INJURY	2	UNLIKELY
OVER 3 DAY INJURY	3	POSSIBLE
MAJOR INJURY	4	LIKELY
DEATH	5	VERY LIKELY

RESIDUAL RISK LEVEL

SEVERITY X LIKELIHOOD = RISK RATING

EXAMPLE

MINOR INJURY (2) X UNLIKELY (2) = 4

<u>RISK RATING & RESIDUAL RISK RATING</u>	
1 – 5	LOW RISK
6 – 12	MEDIUM RISK
13 – 25	HIGH RISK

Appendix 8 – Public advice on responsible feeding.



 **CHESTERFIELD**
BOROUGH COUNCIL

Feed birds responsibly

What you can do to help

Feed responsibly

Whilst we would prefer you not to feed, if you do please use mixed corn, floating duck pellets, uncooked plain porridge oats or bird seed.

Avoid bread

The geese will eat it, but it is not very good for them and can lead to Angel Wing (a deformity in the wing).

Do not feed large amounts


Always wait until the bird has eaten what you have thrown. Left over food attracts vermin.

Large numbers of geese in the park cause problems. Please help us to maintain a safe and clean environment

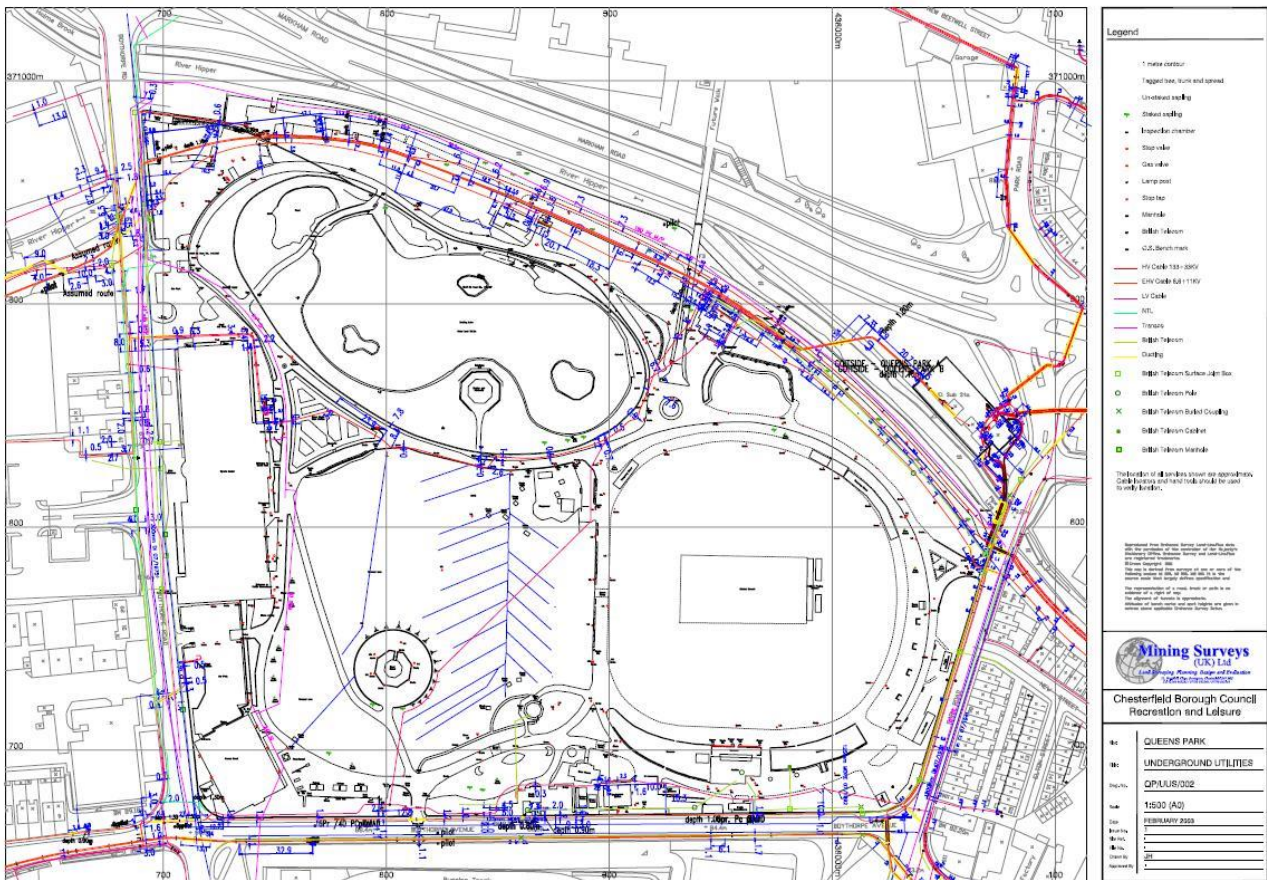
Appendix 9 – Tree Groupings in the park



- KEY**
- Yew / Holly in variety
 - Horse Chestnut
 - Lime
 - Ornamental Cherry
 - Mature specimen - ash/beechnut/plane
 - Weeping ash
 - Modern tree planting
 - Others : Whitebeam, Birch, Willow, Sycamore.

ASHMEAD . PRICE	QUEENS PARK, CHESTERFIELD Landscape Survey and Management Plan	Scale 1:2500 Date : July 2000
CHESTERFIELD BOROUGH COUNCIL	Title : KEY TREE SPECIES	NORTH  FIGURE 5

Appendix 10 – Service information



Appendix 11 – Chesterfield Monuments Record

Derbyshire CC Monument Full Report

SMR Number	Site Name	Record Type
31506 - MDR10126	Midland Railway, Brampton branch - (1870) largely dismantled	Monument

Monument Types and Dates

(Former Type) RAILWAY (Post Medieval to Unknown - 1870 AD)

Description and Sources

Description

In 1870 the Midland Railway opened the Brampton branch off its main Leeds to Derby line. This branch line ran from Chesterfield to Brampton, linking the expanding industrial area along the Hipper with the main line. Map evidence shows that it originally ran as far as New Brampton Colliery, but that by the end of the century it had been extended another 500m or so further west to serve several potteries.

Sources

- (1) Unpublished document: Stroud, G. 2002. Extensive Urban Survey: Chesterfield. Archaeological Assessment Report.
- (2) Map: Ordnance Survey. OS County Series, 1st edition, scale 1:2500 (c. 25" to one mile). Sheet XXV.6, 1876
- (3) Map: Ordnance Survey. OS County Series, 2nd edition (1st revision), scale 1:2500 (c. 25" to one mile). Sheet XXV.6, 1898

Location

National Grid Reference

Centroid SK 37577 70832 (MBR: 1808m by SK37SE Area

Administrative Areas

Civil Parish CHESTERFIELD, CHESTERFIELD, DERBYSHIRE

Address/Historic Names - None recorded

Designations, Statuses and Associated Legal Designations - None recorded

Other Statuses and Cross-References

Sites & Monuments Record - 31506 Active

Ratings and Scorings - None recorded

Land Use

Associated Historic Landscape Character Records - None recorded

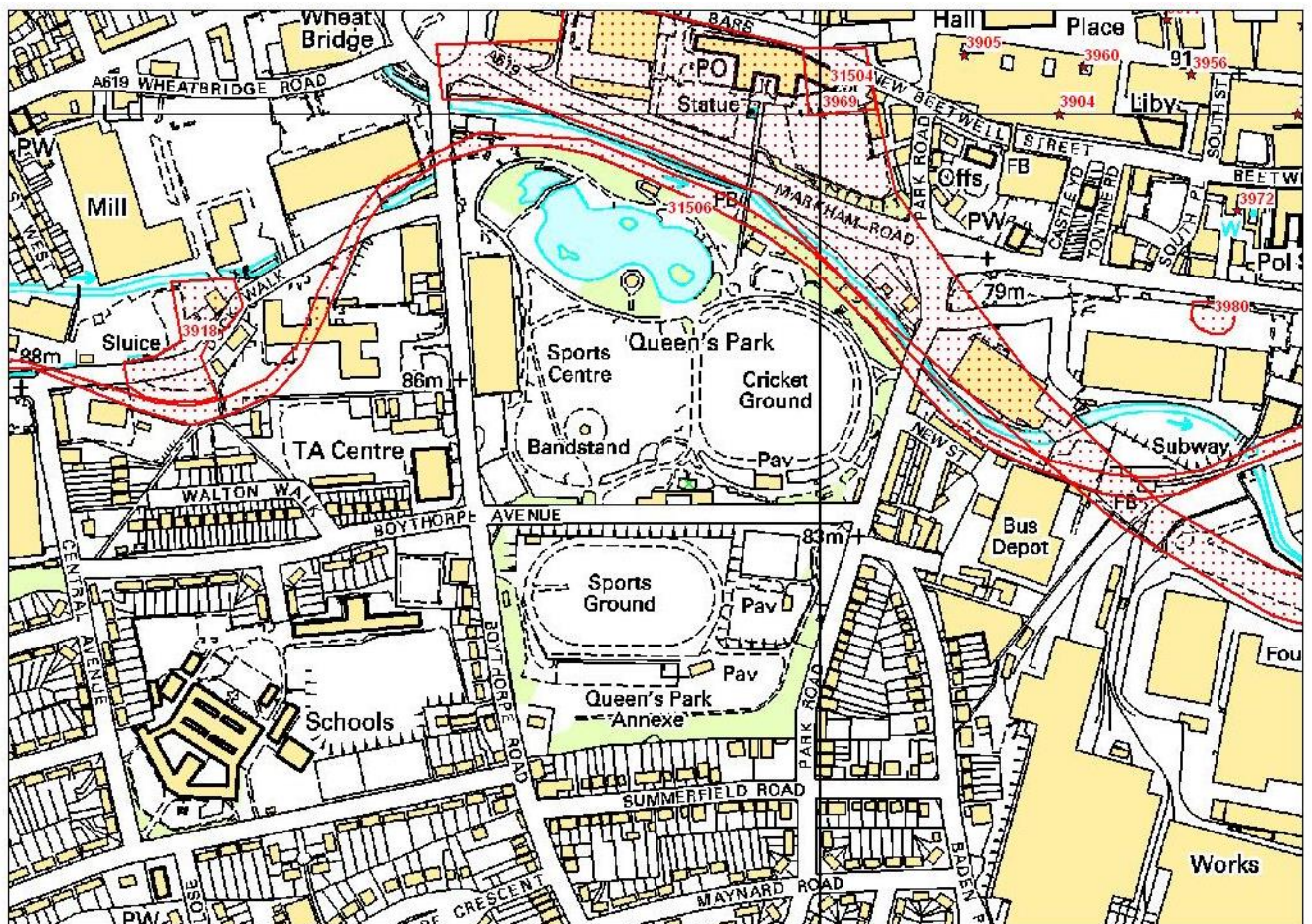
Other Land Classes - None recorded

Related Monuments - None Recorded

Finds - None recorded

Associated Events/Activities - None recorded

Associated Individuals/Organisations - None recorded



Appendix 12 – Heritage Condition

Feature	Bandstand	Condition	Good
<p>Comment: Grade II* listed Restored in 2005 Damage to the cast iron balustrade. Slightly chipped on the paintwork. Hot spot for graffiti. Damage to electrical access floorboard. Circular tarmac path surrounding bandstand is crumbling and requires attention.</p>			

Feature	Conservatory	Condition	Good
<p>Comment: Grade II listed Restored in 2005 Target for repeated window smashing Full paint and refurbishment 2021</p>			

Feature	Dovecote	Condition	Fair
<p>Comment: Re-roofed in 2005 Unfortunately, an area where ASB occurs and thus suffers vandalism. Lead needs replacing with something else (less valuable) but in keeping with the character of the structure. Graffiti needs removing. Central pillar required painting. Ground level up-lighters smashed. Some pigeon spikes need replacing. Monitor guttering and down pipes</p>			

Feature	Entrance pillars and gates Park Road Boundary	Condition	Fair
<p>Comment: Park Road gates and entrance piers have been restored. The original brick wall along Park Road and Boythorpe Avenue has had the copings repaired, re-pointed and replaced where necessary. 2007 flooding caused damage to these gates and brickwork. Pointing was carried out.</p>			

Feature	Entrance pillars and gates Boythorpe Avenue	Condition	Good
---------	--	-----------	------

Comment:

Grade II* listed structure

Boythorpe Avenue gates and entrance piers have been restored. The Chesterfield coat of arms embossed onto disc in gate. These have been painted in appropriate colours.

Recent damaged caused by vehicle crashing into the gates. Have been repaired.

Feature	Entrance pillars and gates Boythorpe Road	Condition	Fair
---------	--	-----------	------

Comment:

Grade II* listed structure

Boythorpe Road gates and entrance piers have been restored. They are outside of the park but show the original boundary of the park.

Feature	North lodge	Condition	Good
---------	-------------	-----------	------

Comment:

Extended in 2005 to include new café. Old part of North Lodge intact and refurbished.

Wasps nests frequently found in fascia.

Pigeon nest on right side of front elevation.

Feature	South Lodge	Condition	Good
---------	-------------	-----------	------

Comment:

Refurbished in 2005.

Houses staff from Chesterfield Age Concern.

Feature	The Lake	Condition	Fair
---------	----------	-----------	------

Comment

Original Victorian outline re-created in 2005.

Removed the major inlet to the lake. Suffers with algae.

Feature	Woodland Walks	Condition	Good
---------	----------------	-----------	------

Comment

2005 – Minor access paths have been recreated to the historical layout and woodland walks introduced through managed vegetation. Ground flora is being conserved.

Views have been created through the tree belt on the Northern boundary. Monitor tarmac paths

Appendix 13 – Banned product List

Ozone depleting substances

Chesterfield Borough Council will not buy products which contain ozone depleting substances or have used these substances in their production or packaging.

The substances can be categorised as:

Chlorofluorocarbons (CFCs), hydrofluorocarbons (HCFCs), halons, 1,1,1, trichloroethane and any other ozone depleting substances.

Tropical hardwoods not independently certified as coming from a well managed and sustainable source.

Wood preservatives or wood treated with preservatives containing pentachlorophenol (PCP), lindane or tributyltioxide.

Active substances banned in the European Union under Council Directive 79/117/EEC

Council Directive 79/117/EEC dated 21 December 1978 prohibits the placing on the market and the use of plant protection products containing certain active substances which, even if applied in an approved manner, could give rise to harmful effects on human health or the environment.

The complete list is available on-line at:

The UK government has added several active substances banned in the UK. More information on pesticides can be found here:

<https://www.hse.gov.uk/pesticides/about-pesticides.htm>

Cleaning materials

Chesterfield Borough Council will not use products which are petroleum-based, or contain foaming agents NTA or EDTA, optical brighteners, chlorine bleaches, enzymes, synthetic perfumes, colourings or have been tested on animals.

Peat for soil amelioration purposes.

Materials containing Genetically Modified Organisms.

Appendix 15 – Council Policies

Parks and Open Space Strategy

Key components of the Parks and open space Strategy.

Building on past and recent investment in parks and open space provision, its long-standing commitment to good management and the reviews detailed, the Council has adopted the following Strategy to maintain and improve parks and open space provision in the Borough:

- Adopt a clear vision for green space provision within the built areas.
- Adopt a clear vision for individual parks and open space sites.
- Seek to increase presence and activity on sites.
- Seek to develop community involvement in the management of parks and open spaces and community awareness and ownership.
- Develop and maintain a clear picture on key strategic issues.
- Maintain and develop a range of partnerships.
- Consider the role of parks and open spaces in all cross cutting issue strategies and programmes.
- Use the planning and development control process to maximum benefit.
- Prepare management and development plans for key sites.
- Seek to ensure adequate capital and revenue funding.
- Bring about improvements in the quality of provision.
- Seek to provide appropriate provision in areas of deficiency.
- Take regard of needs in respect of provision in areas of social deprivation and dense built areas and encouraging use by all the community.
- Review of staff structure - including the establishment of dedicated parks and open space development officers.
- Prepare and implement action plans to bring about improved provision and ensure appropriate management.

EN31 – Conservation Areas

1: 'Within conservation areas, buildings, open spaces, trees, views and other features which contribute to the special character and appearance of the area will be conserved and protected from harmful development'.

2: 'Proposals for new development ... will only be permitted where ... such proposals will preserve or enhance the special character or appearance of the conservation area'. This also includes the harmonisation in terms of form and materials of proposals adjacent to conservation areas

8B: 'Consent to demolish a building in a conservation area in which it makes a positive contribution to the character or appearance will only be granted ... if it is beyond repair or beneficial use or ... if the building is of inappropriate structure or design and its removal or replacement would benefit the character or appearance of the area'.

Extracts taken from the Greenprint for Chesterfield

ACTION 2004 – 2009

1. Survey and Monitoring

- 1a Conduct a Borough wide desktop study to identify known areas of the 9 key habitats and species and map them. Identify priorities for further survey.
- 1b Conduct surveys of priority habitats not adequately covered by existing information.
- 1c Conduct baseline surveys for bluebell, grass snake, bats and skylark, involving the public.
- 1g Survey all urban and post-industrial habitats to identify those of biodiversity significance.
- 1h Monitor key ecological sites (for example CWS) for the presence of non-native invasive species. Species of priority are New Zealand pigmyweed (*Crassula helmsii*), water fern (*Azolla filiculoides*) and parrot's-feather (*Myriophyllum aquaticum*), American signal crayfish (*Pacifastacus leniusculus*), American Mink (*Mustela vison*), sycamore (*Acer pseudoplatanus*) and *Rhododendron ponticum*.

2. Protection

- 2c. Ensure Greenprint priority habitats and species outside of designated sites are protected through the planning system wherever possible, and provision made for their management.
- 2d Ensure that information is disseminated to planning officers, parks and countryside staff and others so that they have up to date knowledge of protected species legislation and raise awareness of protected species among developers. Instigate a rolling programme of dissemination.
- 2e Ensure that trees of amenity value are protected by Tree Preservation Orders where appropriate.

- 2f Identify and protect refuge areas along watercourses for wildfowl, otters and others through the CWS system.
- 2g Designate no-fishing areas in those stretches of the River Rother catchment, which support native white-clawed crayfish.
- 2h Ensure that public access to areas of biodiversity value is encouraged and carefully managed to protect them from adverse impacts.
- 2i. Discourage the use of rodenticides in areas supporting water voles. Ensure that pest control officers and agencies active within the Borough of Chesterfield are fully aware of the issues relating to water voles (i.e. correct identification of water voles, known water vole sites, how to ensure pest control does not affect water voles).
- 2j Promote the use of bat-friendly timber preservatives/treatment in all new developments.

3. Management

- 3a Ensure all Borough Council owned land, particularly sites holding priority habitats or species are managed according to management plans that maximise their value for biodiversity.
- 3b Provide training for parks and countryside staff on conservation management, including species recording on sites they manage.
- 3f Control and reduce invasive non-native species on county highways, DCC and CBC owned or managed land in conjunction with the Highways Agency and the Environment Agency (EA).
- 3g In conjunction with EA, encourage businesses and landowners to minimise negative impacts on river habitats and watercourses. Ensure advice and information on how this is achieved is available.
- 3i Where improvements to flood defence are required, ensure that these are designed to maximise benefits to biodiversity. Promote the use of wetlands as sustainable flood defence features.
- 3j Ensure that all standing waters, watercourses swamp, fen and reedbeds on Local Authority owned land are protected from disturbance, nutrient enrichment and pollution with a buffer zone by 2009. Promote the use of buffer zones to other land
- 3k Promote wildlife-friendly management of fishing ponds to clubs and owners.
- 3l Consider developing or supporting the development of a local provenance nursery to supply plants for habitat creation schemes.
- 3m Instigate a project to collect seed from important trees to propagate and plant near the original tree to ensure continuity. Collect and propagate seed by 2006 and plant out by 2009.
- 3o Where necessary, consider appropriate mink control on CBC land to protect water vole populations.

- 3q Review water level management plans and abstraction licences and discharge consents in favour of enhancing water levels and quality in priority wetland habitats.
- 3r Borough Council Leisure Services to review management of all gardens or parks and open spaces to improve them in favour of wildlife.

4. Habitat Creation

- 4b Explore opportunities to create new areas of habitat on council owned land, making use of available grant aid.
- 4c Ensure that in all Local Authority habitat creation projects locally sourced seed/plants are used as a priority.
- 4d Encourage all new developments to use locally native species in their landscaping wherever appropriate. Where this is not possible use cultivated species of value to wildlife.
- 4e Provide incentives for community groups to enable them to create and manage new habitats.
- 4f Promote the use of artificial roosting aids (e.g. bat boxes/bricks) on new development and all Local Authority land where appropriate. Encourage house owners to erect bat boxes on their own properties.
- 4m Raise awareness of the decline of the bluebell and the issues involved in its conservation.

5. Awareness

- 5a Run a programme of awareness raising regarding biodiversity in the Borough focusing on the key habitats and flagship species and issues affecting them.
- 5b Develop opportunities for local communities to participate in conservation work on local sites wherever possible, working with other key organisations.
- 5c Promote wildlife-friendly gardening as a vital way in which householders can help biodiversity. Provide literature and place information on the web.
- 5d Ensure that all Borough Council Members and Officers making decisions that may affect biodiversity are given appropriate guidance or training by 2005.
- 5e Carry out a targeted programme of awareness work with local businesses to encourage them to incorporate action for biodiversity into their working practices.
- 5g Where action for biodiversity is taking place in public open spaces consider the use of interpretation to publicise and explain it.

Per Cent for Art

The council has operated a 'Percent for Art' scheme since 1994 which has seen the completion of over 70 new art schemes located throughout the borough that help to create a sense of place and add character to the built environment.

Policy on Service Delivery/Customer Care

- Everyone using, or seeking to use, our services are treated respectfully and courteously. Some systems for equality monitoring of people using services are operational and others are being developed.
- Those who experience discrimination are consulted about the planning and delivery of services with respect to their specific requirements. Services are flexible and responsive to these requirements. Wherever possible we conduct needs assessments with the outcomes informing strategies and action plans.
- All contracts require agencies and tenderers to comply with the Council's Equal Opportunities Policy as far as the law allows.
- Information and meetings are as accessible as possible (using interpreters, sign language interpreters, support workers and/or translated materials, and different formats including electronic and the internet; together with flexibility in timings and environment) and, where useful, targeted to those who experience discrimination.
- Our complaints leaflet, which includes discrimination, harassment and bullying, is widely promoted and employees receive training to respond appropriately to such complaints.

Quality and Environmental Policy

Chesterfield Borough Council via this Quality & Environmental Policy Statement demonstrates its commitment to delivering best value services through continuous improvement and to protecting and caring for the environment.

- We operate within a formal Integrated Management System based on the requirements of BS EN ISO 9001:2008 (Quality Standard) and EMAS (Eco-Management and Audit Scheme) continually improving the services we provide. Our aim is to achieve the highest standards of quality and environmental

performance. We will meet the identified needs of our customers, working with, and empowering, local partners and the citizens of Chesterfield.

- Our objectives are set out in the EMAS Management Programme and Service Plans, which are communicated to all employees and are subject to regular review. We are committed to preventing air, water and land pollution, and will comply with, and where appropriate, exceed the requirements of all-relevant legislation, regulations and codes of practice.
- We signed the Nottingham Declaration in 2007 strengthening our commitment to reduce CO2 emissions
- We will minimise the negative environmental impact of all our activities and services throughout their lifecycle. We will set and review our objectives and targets in line with internal procedures, aiming to:
 - Improve energy efficiency
 - Reduce emissions to air
 - Reduce water usage
 - Increase environmentally preferable procurement
 - Improve waste management
 - Protect and enhance Biodiversity

Procurement Objectives – Specifically Chesterfield Borough Council...

- will only purchase wooden products independently certified as coming from a well managed and sustainable source.
- will not use cleaning products which are petroleum-based, or contain foaming agents NTA or EDTA, optical brighteners, chlorine bleaches, enzymes, synthetic perfumes, colourings or have been tested on animals.
- will purchase food and beverage with the Fairtrade logo where they exist for consumption by the organisation, in vending machines and for sale at retail outlets.
- will not purchase materials containing Genetically Modified Organisms.
- will not purchase peat for soil amelioration purposes.
- will only purchase computers and electrical office equipment that has been awarded an energy star.
- will purchase environmentally preferable paper and ensure that all externally printed matter is also printed on environmentally preferable paper.
- will purchase water based paints, stains and varnishes where they are available, where they are not, we will only purchase paints, stains and varnishes with a low VOC/solvent content.

- will purchase the least polluting vehicle that meets our service requirements. In addition, we will purchase either hybrid vehicles, or diesel vehicles that can run using BioDiesel.

Risk Management - Policy Statement

The Authority will take all reasonable steps necessary to protect and preserve its assets from any loss or damage that could affect its ability to discharge its responsibilities to employees and the community.

The Authority will use risk management to identify, evaluate and manage the risks to which it is exposed. It will seek to implement the most cost-effective measures to avoid, reduce and/or control risks.

A Corporate Risk Management Group has been established to:

- Evaluate and manage corporate, strategic and cross-cutting risks.
- Provide all departments with guidance and advice; &
- Encourage and co-ordinate risk management activities.

The Group has the full support of the Chief Executive and Chief Officers.

The responsibility for risk management does not rest solely with the Corporate Group but is shared by all staff and councillors.

It is the responsibility of every Department to implement the Council's Risk Management Strategy. Operational risks are to be managed at a departmental level.

Reports to Members will include, where appropriate, a section on the 'risk implications' of what is being proposed.

AIMS OF RISK MANAGEMENT

The Councils already has some of the key elements of Risk Management in place, for example:

- Risk Management Group
- Safety Committee
- Emergency Plan
- Internal Audit
- Project and Contract Management
- Insurance arrangements

The aim of the Risk Management Strategy is to adapt, improve and codify existing processes and where appropriate introduce new ones.

HEALTH AND SAFETY POLICY

STATEMENT OF INTENT

Chesterfield Borough Council acknowledges its statutory duties under the Health and Safety at Work Act 1974 and all associated legislation, to ensure, so far as is reasonably practicable, the health, safety and welfare of its employees and the health and safety of any other person who may be affected by its undertakings.

In respect of its employees, this includes the provision of:-

- (i) A safe place of work.
- (ii) A safe and healthy working environment.
- (iii) Safe plant and equipment.
- (iv) Safe systems of work.
- (v) Adequate information, instruction, training and supervision.
- (vi) Adequate welfare arrangements.
- (vii) Adequate arrangements for handling, storing transporting and using articles or substances at work.

Suitable and sufficient risk assessments undertaken in accordance with all statutory provisions.

A full consultation framework consisting of a Health and Safety Committee arranged quarterly with representatives from the employers and employees' sides in accordance with The Safety Committee and Safety Representatives Regulations 1977. (For terms of reference see Section 3.25)

Standards of Care

In general, a higher standard of maintenance in the park is being aimed for. This is backed up by the Councils additional revenue commitment to the park. As well this, the reshaping of existing services and budgets is leading to an improved quality of service. Much greater emphasis is being placed on customer care.

What can I expect?

The Council has a duty to keep public land and highways for which it is responsible, free of litter and rubbish, as far as reasonably practicable.

Council officers will patrol the streets to ensure that littering does not take place and that anyone found littering cleans up or faces a fine. To ensure that the Borough is kept clean, we litter pick or sweep areas which are dirtiest and of greatest need more often than areas which are cleaner. The Council has developed detailed programme for routinely cleaning all areas of the Borough at different frequencies and ensures that problem areas are targeted to maintain high standards.

We employ a variety of cleaning methods for keeping the Borough clean, although human behaviour and the British climate means that standards will sometimes fall temporarily to an unacceptable level.

If you have a problem with the standard of cleaning in your area and want something doing about it, please telephone one of the Helpline Numbers shown at the end of this booklet.

We will respond to your complaint and where it is our responsibility will carry out a 'one off' clean up with the aim of restoring standards to an acceptable level as quickly as possible.

If you are concerned about the condition of any land and you are unsure who the owner is, you can still contact us and someone will try to find out who the owner is so that you know who to direct your complaint to. If the land is seriously detrimental to the amenity of your neighbourhood or a health hazard, the Council may take enforcement action on your behalf to get the land cleaned up.

Other Cleaning Services

In addition to basic litter picking and sweeping operations we also provide other services which are intended to keep the environment clean. These include:

Litter Bins and Dog Waste Bins

There are around 1,200 litter bins and 300 dog waste bins at suitable and convenient locations throughout the Borough. They are emptied regularly to ensure that they do not become overfilled. If you see an overflowing bin, please report it to us on one of the Helpline Numbers.

Leaf Fall

During the autumn additional resources are provided to ensure that fallen leaves are cleared before they can accumulate and become a dangerous hazard for vehicles or pedestrians.

Parks and Open Spaces

We provide:

- 83 parks and open spaces covering 900 acres
- 11 woodlands of recreational value covering 120 acres
- Park Greenspace officers to patrol green spaces
- 79 acres of allotments across 28 sites
- Landscape refurbishment schemes on housing sites
- Brearley Park Local Nature Reserve
- 41 football pitches, 6 cricket pitches, 7 bowls greens, 1 athletics track, 1 miniature railway, 2 miniature golf putting courses, 1 artificial turf pitch, 2 boating lakes, 2 orienteering courses, 4 coarse fishing venues, 7 tennis courts, and 1 bandstand
- An 18-hole golf course at Tapton, a pitch and putt and a 9-hole golf course at Dobbin Clough
- 78 children's play areas
- 2 youth shelters, 1 outdoor skate facility, 4 multi-use games areas and 1 community café
- In addition, we mow 833 acres of grass, maintain 22 acres of shrubs/roses/bedding, cut 27 miles of hedgerow and sustain over 4,000 highway/estate trees and 4,000 parkland trees and 185 acres of woodlands across 28 sites.

What standards can I expect?

The Parks and Grounds Maintenance teams aim to achieve a high standard of work at all our sites. We inspect children's playgrounds regularly to ensure they are safe. We also cut grass during the summer to enable recreational activity and to keep things looking attractive.

Appendix 16 - Revenue cost for the park

Account Code	Description	Original Budget 2021/22 (£)	Revised Budget 2nd draft (£)	Profile of Revised (£)	Actual to December (£)	Variance (Adverse) / Favourable (£)
003						
Environment						
0511 Queen's Park						
- Heritage 202100						
- 202109						
1301	General Salaries	5,360	4,820	3,615	1,996	1,619
1340	N.I.-Salaried Staff	170	0	0	0	0
1342	Apprentice Levy	30	20	15	10	5
1350	Superann-Salaried Staff	810	730	547	306	241
1410	Employee Related Insurances	0	190	0	0	0
	Employee Expenses	6,370	5,760	4,178	2,312	1,865
2100	General Repairs	250	250	187	234	(46)
2204	General Grounds Maintenance	500	250	187	0	187
2216	Electricity	9,000	5,650	4,237	6,380	(2,143)
2217	Gas	4,350	3,450	2,588	2,191	396
2228	Water Charges (Metered)	1,700	1,850	1,388	2,791	(1,403)
2230	Sewerage & Environmental Charges	1,600	2,000	1,500	2,990	(1,490)
2249	Refuse Collection Charges	1,220	1,220	750	737	13
2251	Buildings Insurance	1,110	790	0	0	0
2255	Contrib. to Premises	52,240	52,240	0	0	0

	Renewals Fund					
	Premises Related Expenses	71,970	67,700	10,837	15,323	(4,486)
4192	Miniature Railway	1,200	1,450	1,450	1,688	(238)
4204	General Equipment/Materials	750	500	375	119	256
4205	CCTV Maintenance & Equipment	8,680	8,680	6,510	4,338	2,172
4271	Security Services	10,300	10,000	7,500	5,296	2,204
4279	Performing Right Society/PPL	200	200	0	0	0
4305	Professional Services	400	400	300	70	230
4337	Telephone Expenses	600	600	450	417	33
4377	Derbyshire CCC - Direct Grant	15,000	0	0	0	0
4378	Derbyshire CCC - Indirect Support	10,000	5,000	5,000	4,204	796
4411	Other Insurances	40	30	0	0	0
4429	Band Concerts	1,200	0	0	0	0
4445	Winter Maintenance	100	0	0	0	0
	Supplies & Services	48,470	26,860	21,585	16,133	5,452
5010	Grounds Maintenance	153,040	153,040	114,000	114,232	(232)
5011	Building Cleaning	8,260	8,260	6,195	5,451	744
5012	Street Cleaning	1,600	1,600	1,200	1,177	23
	Agency & Contracted Services	162,900	162,900	121,395	120,860	535

9047	Miscellaneous Income	0	(250)	(188)	(250)	62
9059	Insurance Recharged	(980)	(1,000)	(500)	(498)	(2)
9150	Fees and Charges - General	(12,360)	(9,000)	(8,640)	(8,788)	148
9167	Miniature Railway	(9,800)	(6,500)	(6,500)	(6,387)	(113)
9198	Cricket	(6,800)	(3,500)	(3,500)	(3,496)	(5)
9256	General Rents	(33,200)	(31,910)	(24,382)	(24,383)	1
	Income	(63,140)	(52,160)	(43,710)	(43,802)	92
	Queen's Park - Heritage	226,570	211,060	114,285	110,826	3,459

PROPERTY: Queen's Park - North Lodge and Conference Centre				COMMITTEE: Rec & Leisure					CODE: 2300					
	CURRENT COST £	EXPECTED LIFE (yrs)	COST PER ANNUM £	2017/18	2018/19	2019/20	2020/21	2021/22	2022/23	2023/24	2024/25	2025/26		
General Repairs/Maintenance	875.00	1	875.00	875.00	875.00	875.00	875.00	875.00	875.00	875.00	875.00	875.00		
Internal Decorations	6250.00	5	1250.00		3750.00		2500.00			3750.00		2500.00		
External Decorations	1875.00	5	375.00		1875.00					1875.00				
Roof Repairs and Maintenance	7500.00	15	500.00			2500.00					2500.00			
Tarmacadam/Paving Resurfacing and Maintenance	7500.00	15	500.00			2500.00					2500.00			
Fixtures and Fittings Repair and Maintenance	1750.00	5	350.00	350.00	350.00	350.00	350.00	350.00	350.00	350.00	350.00	350.00		
TOTAL	£		3,850.00	1,225.00	6,850.00	6,225.00	3,725.00	1,225.00	1,225.00	6,850.00	6,225.00	3,725.00		

PROPERTY: Queen's Park Ancillary				COMMITTEE: Rec & Leisure					CODE: 2320					
	CURRENT COST £	EXPECTED LIFE (yrs)	COST PER ANNUM £	2017/18	2018/19	2019/20	2020/21	2021/22	2022/23	2023/24	2024/25	2025/26	2026/27	
General Repairs	800.00	1	800.00	800.00	800.00	800.00	800.00	800.00	800.00	800.00	800.00	800.00	800.00	
Column Re-Lamping	400.00	3	133			80.00			80.00			80.00		
Column Testing	500.00	5	100.00					100.00					100.00	
TOTAL	£		1,033	800.00	800.00	880.00	800.00	900.00	880.00	800.00	800.00	880.00	900.00	

PROPERTY: Queen's Park Boat Shed				COMMITTEE: Rec & Leisure					CODE: 2320						
	CURRENT COST £	EXPECTED LIFE (yrs)	COST PER ANNUM £	2017/18	2018/19	2019/20	2020/21	2021/22	2022/23	2023/24	2024/25	2025/26	2026/27		
General Repairs and Maintenance	1750.00	1	1,750.00	1,750.00	1,750.00	1,750.00	1,750.00	1,750.00	1,750.00	1,750.00	1,750.00	1,750.00	1,750.00		
Emergency Lighting Replacement	2000.00	10	200.00										2,000.00		
Light Fitting Replacement	1000.00	10	100.00										1,000.00		
Fire Alarm Replacement	2000.00	10	200.00										2,000.00		
Electrical Test/Inspection	200.00	5	40.00					200.00					200.00		
Electric Heating Renewal	500	15	33												
Water Heating Replacement	500	10	50.00										500.00		
Replacement Extract Fans	300.00	10	30										300.00		
Fire Extinguisher Replacement	150.00	10	15.00										150.00		
TOTAL	£		2,418	1,750.00	1,750.00	1,750.00	1,750.00	1,950.00	1,750.00	1,750.00	1,750.00	1,750.00	7,900		

PROPERTY: Queen's Park North Lodge Café and Toilets				COMMITTEE: Lesiure Services					CODE: 2320					
	CURRENT COST £	EXPECTED LIFE (yrs)	COST PER ANNUM £	2005/06 £	2006/07 £	2007/08 £	2008/09 £	2009/10 £	2010/11 £	2011/12 £	2012/13 £	2013/14 £	2014/15 £	
General Repairs and Maintenance	6,100.00	1	6,100.00	6,100.00	6,100.00	6,100.00	6,100.00	6,100.00	6,100.00	6,100.00	6,100.00	6,100.00	6,100.00	
Emergency Lighting Renewal North Lodge and Toilets	4000.00	10	400.00										4,000.00	
Emergency Lighting Renewal Café	750.00	10	75.00										750.00	
Light Fitting Replacement	2500.00	10	250.00										2,500.00	
Light Fitting Replacement	2000.00	10	200.00										2,000.00	
Intruder Alarm Replacement	5000.00	10	500.00										5000	
Fire Alarm Replacement	12000.00	10	1,200.00										12,000.00	
Electrical Test/Inspection North Lodge and Toilets	350.00	5	70.00					350.00					350.00	
Electrical Test/Inspection Café	150.00	5	30.00					150.00					150.00	
CCTV Renewals	7000.00	10	700.00										7000	
Central Heating Replacement North Lodge	2000.00	15	133											
Central Heating Replacement Café and Toilets	5000.00	15	333											
Kitchen Filter Replacement	500.00	5	100.00					500.00					500.00	
Kitchen Extract Renewal	10000.00	10	1,000.00										10,000.00	
Replacement of Ventilation Fans	1500.00	10	150.00										1,500.00	
Fire Extinguisher Replacement	250.00	10	25.00										250.00	
Water Softner Replacement	3000.00	10	300.00										300.00	
Automatic Taps/toilet flush Replacement	2000.00	10	200.00										2,000.00	
TOTAL	£		11,767	6,100.00	6,100.00	6,100.00	6,100.00	7,100.00	6,100.00	6,100.00	6,100.00	6,100.00	54,400	

PROPERTY: Queen's Park Pavilion & Junior Change				COMMITTEE: Rec & Leisure					CODE: 2320						
	CURRENT COST £	EXPECTED LIFE (yrs)	COST PER ANNUM £	2017/18	2018/19	2019/20	2020/21	2021/22	2022/23	2023/24	2024/25	2025/26	2026/27		
General Repairs and Maintenance	5450.00	1	5,450.00	5,450.00	5,450.00	5,450.00	5,450.00	5,450.00	5,450.00	5,450.00	5,450.00	5,450.00	5,450.00		
Emergency Lighting Replacement	3000.00	10	300.00										3,000.00		
Light Fitting Replacement	3500.00	10	350.00										3,500.00		
Intruder Alarm Replacement	2000.00	10	200.00										2,000.00		
Fire Alarm Replacement	7000.00	10	700.00										7,000.00		
Electrical Test/Inspection	350.00	5	70.00					350.00					350.00		
CCTV Renewals	3500.00	10	350.00										3,500.00		
Kitchen Filter Replacement	500.00	5	100.00					500.00					500.00		
Kitchen Extract Equipment Replacement	5000.00	10	500.00										5,000.00		
Extract Fan/heat exchange unit Replacement	3000.00	10	300.00										3,000.00		
Replacement of Smoke Purifiers	2000.00	10	200.00										2,000.00		
Central Heating Replacement	3000.00	15	200.00												
Electric Panel Heater Replacement	500	10	50										500.00		
Shower Replacement	2000.00	10	200.00										2,000.00		
Fire Extinguisher Replacement	200.00	10	20.00										200.00		
TOTAL	£		8,990	5,450.00	5,450.00	5,450.00	5,450.00	6,300.00	5,450.00	5,450.00	5,450.00	5,450.00	54,400		