

Your Chesterfield

Incorporating Our Homes tenants' newsletter



Pages 4 and 5 - huge funding boost for Staveley

Page 6 - enjoy Chesterfield's Great Outdoors this summer!



Welcome

As we look forward to summer, better days are ahead of us.



Councillor Tricia Gilby

With the summer months fast approaching – and ongoing plans to safely ease Covid-19 restrictions – I hope we can all share a sense of optimism that better days are ahead.

The vaccination programme continues to roll-out across the borough. I was due to have my second jab as this edition of Your Chesterfield went to print and I would urge everyone to take up theirs when they're called, as it's such a crucial element of our fight against the virus.

Meanwhile our town centres and high streets have re-opened, we're welcoming people back into our sports centres, and the Pomegranate Theatre*.

We're so pleased to see you back, and you can read more information about our re-opened services in this edition of Your Chesterfield.

Throughout the pandemic the Chesterfield community has pulled together, and I'm confident this spirit will continue as we rally round to support local businesses to get back on their feet.

That's the message behind our new Love Chesterfield campaign which aims to showcase the wonderful businesses in our borough (pages 14 and 15). Please remember to shop locally where you can and help support our retailers and hospitality venues.

Our ambitious regeneration plans are also reason for optimism – from the amazing news that we secured £25m for Staveley (pages 4 and 5) to exciting plans for the town centre (pages 14 to 19), we're working hard to generate jobs and opportunities for local people.

As the weather warms up, we're also encouraging residents to discover the glorious parks and green spaces on our doorstep, as part of our new Chesterfield's Great Outdoors project – find out how to get involved on pages 6 and 7.

Finally, just a reminder that there is still time to enter this year's In Bloom and Sunflower Competition (page 9) – we look forward to seeing your colourful creations!

Get help from the community

There are lots of local community groups and organisations that are offering help and support for Chesterfield residents.

Derbyshire Law Centre

Free advice on a range of issues. Find out more at www.derbyshirelawcentre.org.uk or call 01246 550674 email dlc@derbyshirelawcentre.org.uk

Food Banks

For information on foodbanks near you visit the website for Rural Action Derbyshire: www.ruralactionderbyshire.org.uk/foodbanks or call: 01629 529970

Chesterfield Citizen's Advice

Advice Helpline call: 0808 278 7843

DCC Community Response Unit

If you have no one to support you or if you are 'vulnerable' and you need support to access food, prescriptions or befriending, contact 01629 535091

Derbyshire Unemployed Workers' Centre

Call 01246 231442, email: info@duwc.org.uk or send the team a Facebook message

Domestic Abuse

Call: 08000 198 668. If it's an emergency, call 999. Text: Derbyshire Domestic Abuse Support Line 07534 617252 or email: derbyshiredahelpline@theelmfoundation.org.uk

Derbyshire National Careers Service

For aged 19yrs + (or age 18 if not in education or employment). Chesterfield area: 07717 303855 or wendy.leigh@derbyshire.gov.uk

Homelessness

Pathways of Chesterfield: 01246 498204 or visit: www.pathwaysofchesterfield.co.uk

Mental Health Support line

Derbyshire Healthcare NHS Foundation Trust: 0800 028 0077 (24hrs/seven days)

Getting back to the things you love

It's been a year like no other but, with the continued successful roll-out of vaccinations and testing across the borough, we're looking forward to a return to a more normal way of life.

We've been committed to keeping essential services running for our residents throughout the pandemic, and over recent weeks we've begun to safely re-open facilities where we can, in line with the Government's plan to ease the national lockdown.

This means that many of the facilities and venues that local families love either are – or soon will be – open once more and operating in a Covid-safe way.

High streets re-open for business

Our local businesses and hospitality venues have faced enormous challenges – and now it's never been more important to shop locally and support our retailers, eateries and venues.

We're shining a spotlight on the wide variety of retail and hospitality businesses as part of our Love Chesterfield campaign, encouraging people to support our high streets.

Leisure services – getting back to fitness

Customers have been welcomed back to Queen's Park Sports Centre and the Healthy Living Centre – helping our residents get back to a more active lifestyle.

Our outdoor facilities are also up and running. So, whether you're returning to a long-missed routine, or have been inspired to kick-start a new fitness journey, we're here to help. See page 12.

Chesterfield museum – capturing our lockdown memories

Our museum team has been running lots of online activities during lockdown but have now re-opened the doors to visitors once more – visit www.chesterfield.gov.uk/museum to see what's on. One project is the creation of a 'Chesterfield in Lockdown' exhibition to capture people's experience of the last year. See page 21 for details about how to get involved.

Our venues – enjoying a night out!

It's time to dust off those diaries and start planning ahead, as we welcome audiences back to the Pomegranate Theatre. The Winding Wheel Theatre is currently operating as a Covid-19 vaccination centre and is expected to continue to do so until late August – but some shows are being planned for later in the year.

You can see what's coming up at www.chesterfieldtheatres.co.uk and see page 31 for the summer play season.



*Please check our website for the latest service information: www.chesterfield.gov.uk/coronavirus

Multi-million pound cash boost for Staveley

Residents in Staveley are set to benefit from a 'golden opportunity' to regenerate the area for future generations after town leaders secured more than £25 million worth of investment.

Funding of £25.2 million has been awarded to Staveley Town Board from the Government's Town Deal programme – paving the way for a number of significant projects over the next five years.

It follows an earlier successful bid by the Board under the Government's Accelerator Fund – securing £500,000 for grassroots projects, including a new state-of-the-art all-weather sports pitch at Springwell Community College, new play equipment for King George V Playing Field (pictured below) and new CCTV equipment for Staveley town centre.



It is a further boost for the borough's wider growth agenda – adding to the significant and sustained investments that are already being made across the area to ensure Chesterfield's communities are in the strongest possible position to recover from

the impact of the Covid-19 pandemic.

The projects will be steered by the Staveley Town Deal Board, with overall programme management by the council.

Ivan Fomin, Chair of the Staveley Town Deal Board and Managing Director of MSE Hiller, said: "Our plans are rooted in the needs and aspirations of Staveley's communities, and have been driven by the Board's collective ambitions to attract the investment that this area deserves."

"Bringing funding on this scale to Staveley will transform the area and realise huge benefits to local people, both in terms of how they lead their everyday lives and take advantage of future opportunities."

Detailed business cases for a total of eleven projects which were put forward for funding in the Town Investment Plan are now being progressed:

- Staveley Town Centre improvements including town centre WiFi, greater focus on the Market Place, a 'service hub' bringing together local public services, a cinema or leisure offer and a new pedestrianised area
- Staveley Waterside – a mixed business and residential development centred on Staveley's canal basin. It includes a café and flexible office and workshop units for start-up businesses
- The creation of a modern rail innovation centre co-located with Barrow Hill Roundhouse (known as DRIVE) – creating high-skilled jobs and training opportunities
- A proposed Staveley Rail Station located at Barrow Hill. This relates to a wider project to reinstate passenger services on the Barrow Hill to Sheffield line
- Staveley Miners Welfare FC Skills Academy – to improve facilities and training opportunities
- Wheels to work Staveley Hub – to improve access to employment and training opportunities by improving transport options
- Plans to extend the historic Staveley Hall to create a high-quality events venue to include a larger café and two multi-purpose halls for a wide variety of events



Image of proposed development designed by Gillespies for planning application for mixed use scheme at Staveley Works by Chatsworth Settlement Trust

- The refurbishment of Barrow Hill Memorial Hall to create a new community hub led by Barrow Hill Community Trust. This could include indoor space for team sports and classes, an early years nursery, a space for learning and jobs support, healthcare facilities and a café or pub
- The restoration of the 20-hectare brownfield site at Hartington Industrial Park, ready for industrial and warehouse development
- Construction Skills Hub – a local training hub directly supporting the many developments in Staveley with local labour

It is also hoped that the final stretch of the Chesterfield Canal to the borough boundary will be restored, including a new aqueduct over the river Doe Lea, bridges, a new lock and footpath improvements.

Councillor Tricia Gilby, Leader of Chesterfield Borough Council and Vice Chair of the Staveley Town Deal Board, added: "This investment is tremendous news for our borough, and for the residents of Staveley who are set to benefit from this sizeable investment in a range of exciting projects and programmes."

"This is a golden opportunity which paves the way for this former mining community – which has often been overlooked by previous national funding programmes – to realise its full potential both now and in the future."

"Staveley is a very special place with a rich history and wonderful assets. Through this funding, we will look to harness the town's great potential through re-vitalising the high street, delivering new investment and much-needed jobs, supporting local people to reach their full potential and exciting the interest of new visitors to the place."

Following the announcement in March, partners in Staveley have been working with Government to agree the terms for the next stage of the Town Deal programme and to develop more detail for each project, which will allow the funding to be confirmed.

Find out more about the Staveley Town Deal at www.chesterfield.gov.uk/staveley-town-deal

The photo on the front cover shows: Members of the community and board celebrating the Staveley Town Deal Funding



Get out and about

People are being encouraged to take more opportunities to get out and about in Chesterfield – and boost their physical and mental wellbeing – as part of a project launched this spring.

The 'Chesterfield Great Outdoors' initiative aims to build on the success of the former Beat the Street project, which saw more than 13,000 people take part in physical challenges around the borough – later moving to online activity under Covid-19 restrictions.

Launched in April, it is encouraging local people to explore the fantastic green spaces across Chesterfield, appreciate the 'hidden' wildlife on their doorstep and take part in active ways to help keep the borough clean and green.

Councillor Jill Mannion-Brunt, cabinet member for health and wellbeing, said: "After the last year where we've had to spend more time indoors, I hope lots of people will get out and rediscover our beautiful borough. We will have a packed programme of fun and imaginative activities that will inspire you to make the most of some of the wonderful places on our doorstep – great to enjoy on your own, but also with friends and family."

Over the next year each month has been given a different theme, with regular activities and

competitions. It is hosted on the council's social media pages and website. You can find out more by visiting: www.chesterfield.gov.uk/Great-Outdoors

Whether you're a bit of history buff, a nature lover or just want to exercise, there will be something for everyone to enjoy whilst also exploring our amazing local spaces.

In April the focus was on connecting with nature and the month was brimming with great activities to get involved with. Some of the highlights of the month included building a bird's nest, minibeast hunting, bumblebee spotting and creating a time-lapse of a local tree.

'Mindful May' has been all about taking a moment to enjoy those tranquil spaces across the borough.

There are still lots of great months to go, including the Month of Play, History Month, Winter in the Park and Connect with Your Community. Expect lots of great challenges that will help connect you to local green spaces and give you a reason to get outside.

The themes over the next few months are:

June – Go Wild

July – Best Foot Forward

August – Month of Play

September – Clean and Green

Keep up to date with the latest challenges on our social media pages:

www.facebook.com/ChesterfieldBoroughCouncil

www.instagram.com/chesterfieldbc



Photo by Gabby K from Pexels

Do you run an outdoor exercise activity?

As well as the Year of Outdoors monthly activities, the council is also launching a special offer for anyone who wants to run exercise classes in parks.

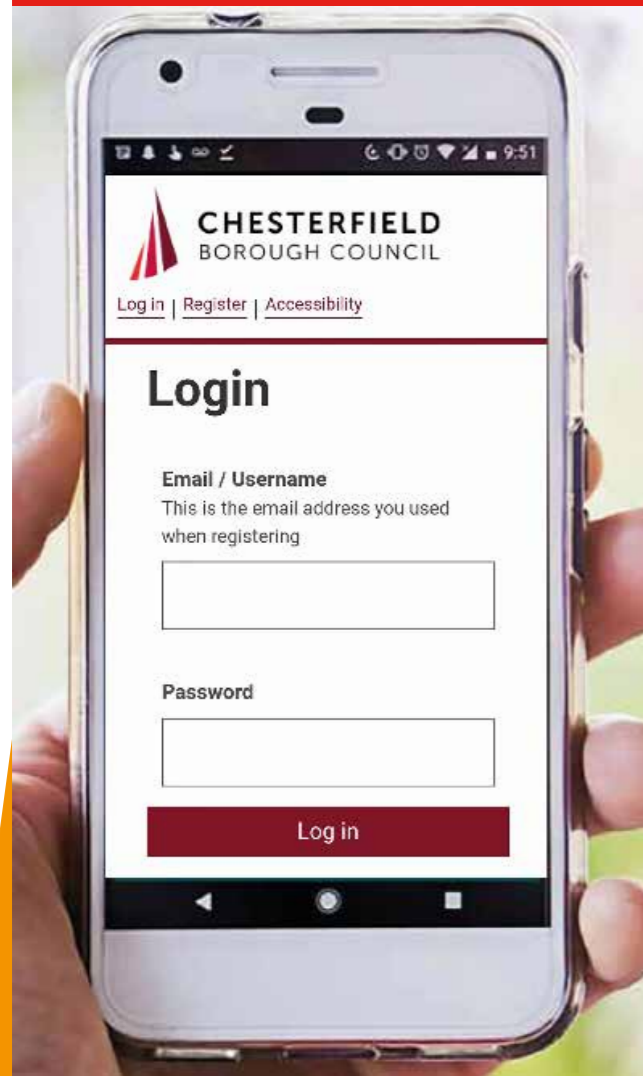
Instead of paying for a permit to hold classes in parks, instructors will be able to get their permit for free so long as they offer some classes to the public at no cost.

To find out more visit: www.chesterfield.gov.uk/chesterfields-great-outdoors



Save time and do it online - a great way to access our services

You can now access a range of council services – at a time that suits you using our new digital platform, My Chesterfield.



Sign up today to manage a range of council services – any time, any where from your home computer, laptop, tablet or mobile phone:

- Manage your Council Tax bills and payments, sign up for e-billing and direct debits
- View bin collection days
- Report an issue, such as noise nuisance
- See information about your local councillors
- Tell us you've moved home
- Report something that needs cleaning up on a street, road or in a park.

www.chesterfield.gov.uk/mychesterfield



Still time to enter In Bloom

Green-fingered residents are being encouraged to show off their talents in this year's In Bloom competition.

People have until Friday 18 June to submit their entries in the following categories:

- Best Front Garden
- Best Back Garden up to 80m²
- Best Back Garden more than 80m²
- Best Container Garden
- Best Blooming Pub/Restaurant
- Best Allotment (with subcategories based on size)

There is also an exclusive competition for council tenants, and entries are invited for Best Garden (either front or back) and Best Containers.

The ever-popular schools' competition makes a return this year too – with flower and vegetable categories.

Chesterfield will be representing the East Midlands region in an online version of Britain In Bloom this year. The council is also entering East Midlands In Bloom and winners of the above competitions may also be included in the judging later this year.

Entry forms are available on the council's website at www.chesterfield.gov.uk/bloom or contact: jemma.dethick@chesterfield.gov.uk / 01246 959532.

Do you have a sunflower to shout about?

We're also on the look-out for the borough's best sunflowers!

This year's competition is looking for the tallest sunflowers, most flower heads on a single plant and the largest flower head.

The competition will close in September, find details on how to enter at www.chesterfield.gov.uk/bloom



Bee friendly raised beds

Delivering key housing projects during the Covid-19 pandemic

It has been a busy 12 months for the council's housing service, and despite the challenges faced following the Covid-19 outbreak, we've worked closely with our partners to ensure that we could continue to deliver some of our key projects.

More than £23 million is to be spent improving and increasing the housing supply across Chesterfield over the next year too.

Here, you can read more about what the team have been up to – and what further improvements are planned.

In summer 2020 we completed a £4.4 million regeneration project which saw homes on the Grangewood Estate benefit from a major facelift.

This included fully redecorating the communal areas to make them lighter and brighter for residents, fitting new secure entrance doors to all blocks, and the installation of new fire rated doors to each

individual flat. The external render and roof coverings on each block of flats have also been replaced and concrete repairs have been carried out.

In addition to this, we've also been working hard to improve our older person's housing across the borough and we're pleased that works were finished at Markham Court – making it the latest older person's housing scheme to benefit from a facelift. As part of the project, 21 self-contained one and two-bedroom contemporary flats have been remodelled, with each property benefitting from new open plan kitchens and living areas.



A £7.1m project to undertake significant modernisation programmes to homes in Staveley also started in summer 2020. Homes at Pullman Close were the first to undergo a facelift and we've received great feedback from our residents as the project continues. As part of the project Mallard Court and Leander Court will be the sixth and final older person's housing scheme to be remodelled whilst Aston Court will be converted into general needs housing.

We've continued to add more homes to our housing stock, meaning we have more affordable housing options for local families. You can read more about some of the new build projects on page 29.

Councillor Chris Ludlow, cabinet member for housing, said: "We've made real progress on a number of key projects and we're proud to see the results which have improved our existing homes and environments – providing modern and affordable housing for our tenants.

"In response to the climate emergency that was declared in July 2019, we are committed to ensuring that all our housing stock is as energy efficient as possible too. We've therefore taken steps to improve the thermal efficiency of the properties within all our works."

Looking to the future

At a meeting of the council in February, councillors approved the Housing Capital Programme, which sets out the investment priorities for 2021/22 and medium-term investment through to 2024/25.

The Housing Capital Programme outlines priorities to ensure that the council housing in the borough continues to meet the decent homes standard and provides good quality affordable homes.

The 2021/22 programme includes:

- Continuing to improve, repair and modernise our existing housing stock to make sure 100% of the council homes continue to meet the decent homes standard
- Continued commitment to the new build programme to increase the housing available – we have added 57 new homes in 2019-2021 and have 59 new homes in the pipeline for 2021- 2023 across the borough
- Continue to invest in our properties for older people
- Continue to improve our estates – creating modern and attractive places that people want to live in

Updates on our key projects will be provided in future editions of Your Chesterfield so watch this space.





Welcome back to your sports centre

We've been working hard to help local residents keep active with virtual fitness classes throughout the pandemic – and now we're pleased to be safely welcoming people back* into our leisure centres as the national lockdown eases.

Whether you're keen to get back into your old routines, or looking to kick-start a new fitness plan, we've re-opened the doors to Queen's Park Sports Centre and The Healthy Living Centre, in line with Government guidance.

Both our centres have undergone a rigorous deep clean and a number of safety measures are still in place to make sure you can enjoy your visit safely.

Councillor Jill Mannion-Brunt, cabinet member for health and wellbeing, said: "We know that exercise is great for people's physical health and mental wellbeing.

"We're keeping the latest guidance under review and following all rules, which means some things will still feel a little different but we're delighted to see our members return, and also extend a warm welcome to anyone who would like to kick-start a new activity over the coming months."

What to expect when visiting our centres

At the minute, you'll need to pre-book visits to the gym and swimming pool using the online booking system or calling the centres. To find out what activities, classes and courses are running and to

book your place online, please visit www.chesterfield.gov.uk/leisure

To keep everyone safe, when visiting our centres please can we ask that you:

- Arrive ready to exercise wearing a face covering
- Maintain social distancing inside the building
- Follow the one-way system
- Clean equipment after use

Please remember that if you are showing any symptoms of Covid-19 you must follow the Government's self-isolation advice and should not attend any of our venues.

For more information about the safety measures in place please visit www.chesterfield.gov.uk/sport-and-leisure/leisure-centres-re-opening-faqs

We would like to thank you for your amazing loyalty and continued patience while our centres have been closed. We're always happy to see new faces coming through our doors too – you can find out more about our Active Fitness memberships at www.chesterfield.gov.uk/sport-and-leisure

*Our leisure centres were open in line with Government restrictions when Your Chesterfield went to print. For the latest service information please check our website or social media channels.

More community groups receive funding boost

Community groups in Chesterfield are set to benefit from more than £30,000 of funding – awarded by the council to support grassroots projects across the borough.

A project which provides laptops to help local schoolchildren, a park improvement scheme, and a LGBT+ support network are among the initiatives which will benefit from the latest round of the Community Infrastructure Levy (CIL) Neighbourhoods Fund.

Councillor Jill Mannion-Brunt, cabinet member for health and wellbeing, said: "This funding ensures that much needed projects for our community can be supported and delivered for the benefit of our residents. This funding is a result of new developments in the borough and demonstrates how we can leverage regeneration projects to ensure they can help meet the needs of our residents in as many ways as possible.

"In the last few months, we have provided well over £100,000 to community groups through this fund. We have further application deadlines coming up, and I would encourage all eligible community groups in need of funding in Chesterfield to apply through this scheme."

This latest round of funding has been provided to six different projects including:

- The Cosy Hub – to buy laptops and provide support to residents when creating CVs, and for children to complete their homework on
- Friends of Hasland Community Hub – to improve facilities in the Working Men's Club to allow several groups to meet at the same time
- Friends of Stand Road Park – to help provide further improvements to the park and ensure it has excellent facilities for local residents
- Derbyshire LGBT+ - to continue to provide support services to local people.

Welcoming the grant, Graham King, Chair of Friends of Stand Road Park (shown right), said: "The group is delighted to have been awarded this funding. Our consultation has shown that the community's next priority for improving the park is to install a network of paths with benches. The CIL

award will allow us to put in eight park benches, at locations to suit the route of the future paths. We aim to put in the paths later once we have raised the required funding."

Ian Robson, Chief Executive Officer of Derbyshire LGBT+, said: "We are very grateful to the council for supporting us. This money will allow us to continue operating our Chesterfield community centre, supporting Chesterfield's LGBT+ communities of all ages in dealing with issues of general health, mental health, sexual health, loneliness and isolation. Our centre provides many support groups and drop-in sessions each week."

In Brimington and Staveley, funds from the Community Infrastructure Levy Neighbourhoods Fund are given directly to the respective town and parish councils to allocate, and Chesterfield Borough Council is responsible for this funding in the rest of the borough.

Find out more about how to apply at www.chesterfield.gov.uk/cil-funding



Eight new park benches of the type shown above will be placed in Stand Road Park this year.

Investing in our town centres

With nationally significant regeneration schemes happening across the borough amounting to a total £1 billion worth of investment Chesterfield is a town with a prosperous future.

The face of Chesterfield is changing, and here we round up some of the key developments - all of which are creating jobs and opportunities for residents.

A bright future for the Pavements Shopping Centre

The future of the Pavements Shopping Centre – which is a central focus of retail in the town centre – is close to being secured under plans for the council to take control of the key site.

The opportunity to purchase the leasehold came up last year. Subject to completion of sale terms, and by taking full control of the indoor centre, we'll be putting the Pavements at the heart of our ambitious plans for the town centre.

Councillor Tricia Gilby, Leader of the council, said: "By taking exclusive control of the Pavements we will have gained a fantastic opportunity for Chesterfield.

"The shopping centre is a key part of our Growth Strategy and Covid-19 Economic Recovery Plan. Our plans to purchase the Pavements will not only secure the future of the shopping centre, but will also support our ambitious plans for the town centre."

It forms part of wider investment in the area, which also includes the revitalisation of the Chesterfield Market, the Northern Gateway development, the Waterside development and Station Masterplan.

Councillor Gilby added: "Chesterfield town centre is not alone in the challenges it faces now and in future years, in part brought on by the Covid-19 pandemic and the rise of online shopping.

"We have now opened up many opportunities for the shopping centre and the town centre, as a whole. It's a chance to re-imagine and re-purpose the current shopping centre and, in time, create a landmark mixed-use regeneration scheme. We can ensure the centre is well-maintained and can look at bringing in new retail and leisure, that complements what we already have in our town."

The council currently owns the land (the freehold of the shopping centre) and provides the operational management.

The council's plan's to purchase the Pavements follows the receipt of specialist expert advice from property investment advisers and to ensure that regeneration across the town centre is driven forward for the benefits of residents and businesses.



Revamping Chesterfield Market

Plans to revitalise Chesterfield Market have moved a step closer after residents, market traders and local businesses were asked to share their views about its future.

Hundreds of people had their say in a series of surveys which aimed to understand what people enjoy about Chesterfield Market, what might encourage them to visit more often, and understand how they think it can be improved.

This was the first step in the £3.25m Revitalising the Heart of Chesterfield project which includes plans to revamp the town's historic outdoor Market Place, as well improve the public space around Elder Way.

Councillor Kate Sarvent, cabinet member for town centres and visitor economy, said: "Chesterfield Market is the heart and soul of the town. It's crucial that we work together with residents, market traders and local businesses to make sure improvements meet their needs. It was fantastic to receive hundreds of responses to our surveys, which shows the market means so much to everyone in Chesterfield."

People showed support for:

- Changing the layout of the market. 72% of the public, 89% of local businesses and 46% of market traders, supported this
- Events, particularly specialist and event markets. These could include food festivals, farmers markets or vintage markets

- Market traders themselves, and a desire to help local businesses

Councillor Sarvent added: "Work is now underway to develop options for the market design and these will be available for comment as part of a consultation with the public, market traders and local businesses."

Plans will include better lighting and power, improved access and stall configuration, general paving repairs, new flexible trading areas and repairs to all existing stall structures. A space for events and speciality markets will also be created.

The project has benefitted from £650,000 of funding through the D2N2 Local Growth Fund. The D2N2 funding will support the creation of 66 jobs across the town centre as well as safeguarding 80 jobs on the outdoor market.

The scheme will also include improvements to the public space between the town centre and the Northern Gateway.

The extension of the pedestrian area at Elder Way and into Packers Row will create more room for outdoor seating for restaurants and cafes. The improvements include more trees, new street furniture, new bus shelters and re-positioned bus stops on Elder Way.



Investing in our town centres

Let's Love Chesterfield

Our town centre and high streets are back open for business and now it's time to Love Chesterfield.

With a wide range of independent shops and some big names, alongside the market, the town centre is the heart of Chesterfield. Local businesses need everyone's support more than ever now that the town centre and high streets are back open for business.

We've teamed up with Destination Chesterfield to launch a new campaign called Love Chesterfield which aims to highlight the great range of shops, the places to eat and all the fun things you can do in the borough.

Councillor Kate Sarvent, cabinet member for town centres and visitor economy said: "It is great to see our town centre and high streets back open for business. Our local shops and retailers have worked so hard over lockdown, offering click and collect and delivery options but it has been a massive struggle and now it's up to us to get back out shopping locally.

"Our businesses really need your support. Spending a few pounds a week with local businesses will make a massive difference to them.

It's been convenient to shop online but let's do more of that with local businesses and also shop safely with them once again in our town centre and high streets."

Safety remains a priority and everyone is encouraged to continue to follow social distancing rules, wear a face covering and to keep washing hands.

Councillor Sarvent added: "Chesterfield is a fantastic place to shop. We pride ourselves on being a friendly town, with many great independent businesses who are ready to welcome everyone back. So, come back and support your town."

Peter Swallow, Chair of Destination Chesterfield, said: "We're encouraging everyone to support our local high street in what's such a crucial time for small, local independent businesses - your purchase could make a real difference."

Locked down but not knocked down

Emma Stevenson at M's Gallery in the town said: "It's been a tough year for all of retail. We may have been locked down, but we aren't knocked down.

"Chesterfield's amazing independents have hung on by providing the same amazing personal service remotely as we do in real life. Now we need your support to build Chesterfield Town Centre back into a vibrant community where we can thrive."



Need a haircut or flowers for a special someone?

Shop local.



You can watch a short film featuring local businesses and market traders encouraging everyone to come back and shop locally at:

www.chesterfield.gov.uk/love-chesterfield where you can also sign up for news, discounts and giveaways.

Love
CHESTERFIELD

Experience
CHESTERFIELD
WARMTH



Investing in our town centres

Milestone moment for Chesterfield Waterside

Progress on the town's £340 million Chesterfield Waterside scheme has taken another step forward with the completion of the steel framework for One Waterside Place.

Construction on the landmark seven-storey building is on track to be completed later this year, with tenants already committed to moving into the 'grade A' office accommodation.

With the steel frame in place, progress was marked by a bolt tightening ceremony in March.

Councillor Tricia Gilby, Leader of the council – who attended the event via video conferencing technology due to Covid-19 restrictions at the time – said: "It's fantastic to see this building progressing at such pace. When complete One Waterside Place will provide modern office accommodation for businesses and in turn will create more jobs for local residents.

"It is just one of several high-quality developments around the borough that will help ensure we are in the strongest possible position to recover from the impact of the pandemic, as a thriving borough with lots of opportunities for business development and economic growth."

Construction of the office block began last year following a forward funding agreement between the council and Chesterfield Waterside Ltd.

Peter Swallow, Chair of Chesterfield Waterside Ltd and Managing Director of Bolsterstone Group said: "This is a further step forward in the creation of a quality modern office environment in Chesterfield; one that meets the demands of the most discerning occupiers in the post-Covid economy."

Chesterfield-based accountancy firm BHP Chartered Accountants has already committed to occupy a floor of One Waterside Place once complete.



Recognised as being one of the UK's largest regeneration projects, Chesterfield Waterside is being led by Chesterfield-based Bolsterstone Group Plc working in conjunction with Arnold Laver Group and the council.

To find out more about the office space available, please contact Harry Orwin-Allen at Knight Frank on 0114 272 9750 or Tim Richardson at FHP Property Consultants on 01332 343 222.

Northern Gateway Enterprise Centre set to welcome tenants

Work on the Northern Gateway Enterprise Centre is progressing at pace – on track to be ready for tenants this summer.

Residents will have seen the flagship development on the donut roundabout take shape over recent months, and the final stages are nearing completion.

Not only does it boast grade-A office accommodation, it has been built with sustainability at its heart and marks a new standard for environmentally-friendly buildings in Chesterfield.

Councillor Dean Collins, cabinet member for economic growth, said: "This is a key site which will provide new opportunities for local businesses to start, grow and thrive as we move forward from the impact of the pandemic. Supporting new and growing businesses to develop in the borough ultimately creates more jobs and

opportunities for local people.

"As well as helping us build back stronger from the impact of Covid-19, this development also marks a new standard in environmental sustainability in Chesterfield. The building has excellent environmental credentials which not only means reduced emissions, it also helps save on running costs."

It has been designed to a BREEAM Excellent standard. The Building Research Establishment's Environmental Assessment Method (BREEAM) is a sustainability rating scheme and focuses on building design, construction and use, which helps measure and reduce the environmental impacts of buildings.

Are you a new or growing business looking for top-grade office space?

Our exceptional Northern Gateway Enterprise Centre in Chesterfield town centre will soon be open for business – offering serviced offices with flexible terms.

**Find out more:
Call: 01246 345255**

Email: economic.development@chesterfield.gov.uk
www.chesterfield.gov.uk/enterprise



Investing in our town centres

Could **Careline** help you?

Our Careline service is continuing to make a huge difference to many residents across the borough – allowing them to live independently with help and support available at the touch of a button.

From as little as 93p per day, Careline provides peace of mind to you, your family and your loved ones so that no matter what, someone will be there to help - 24 hours a day, seven days a week.

You'll be provided with a pendant which can be worn around your neck or wrist. This is an alarm which you can press to call for an emergency response from our Careline team – meaning you can carry on as normal, safe in the knowledge that should anything go wrong, our team are here to help.

Careline can then get in touch with your emergency contacts, request medical assistance, call the emergency services or send a Careline response officer to make sure you are safe and well.

Call us on 0300 303 3378 to find out more about our services, make an appointment for a Careline

Alarm to be installed, or leave details for one of our support officers to contact you. Our phone lines are open 24 hours a day, seven days a week.

Councillor Chris Ludlow, cabinet member for housing, said: "Careline is a really important service and is an essential lifeline for many members of our community, allowing them to live independently and provide reassurance for their loved ones, which over the past year has been more important than ever.

"Our dedicated team has also been on hand to support to over 4,000 residents through the Covid-19 pandemic too – taking calls from older and vulnerable people who needed our support as well as reducing pressure on the emergency services."

Careline



"Careline is a really important service and is an essential lifeline for many members of our community."



Share your stories of 'Chesterfield in Lockdown'

We want to hear more about your experience of life in lockdown to help with a new exhibition at Chesterfield Museum.

The team at Chesterfield Museum is appealing to the local community to get in touch with stories, memories and images that can be used in a unique exhibition- 'Chesterfield in Lockdown'.

As well as sharing your stories and thoughts, you are also invited to send in sanitised items that remind you of lockdown. This could be anything from hand sanitisers, handmade face-masks to paintings and pictures that have been created.

Councillor Kate Sarvent, cabinet member for town centres and visitor economy, said: "Over the past year, the way we live our lives has been impacted in ways we could have never imagined. For many this has brought heartbreak and hardship, and as we mark more than a year on from the first national lockdown, we remember those who have tragically lost loved ones.

"We have been living through the days, seeing history unfold and we've all been impacted in some way. We're really keen to capture what this unprecedented time has meant to local people, so we can reflect on it for years to come.

"This could be something creative which means something really important to you, or a more light-hearted memory or object that will remind you of this time. We can't wait to hear your stories and see your photos."

If you would like to contribute to this exhibition please contact the Museum Collections Team via museum.collections@chesterfield.gov.uk.

The team at the museum are promoting a new borough wide art project – creating something unique, which will be used to reflect on lockdown for many years to come.



The team at the museum is creating a wall hanging - a textile artwork made up of fabric squares, that will commemorate a shared narrative of lockdown in our town, and we are encouraging local people, community groups and schools to get involved and create their own fabric square too.

You can create your own square which can be sewn, knitted, decorated, designed, painted, dyed or printed and send to Lockdown Textile Project, Chesterfield Museum, St Mary's Gate, Chesterfield, S41 7TD by the end of July 2021. Once brought together, it is hoped that the artwork will showcase the wide range of experiences, memories and stories of local people, forming a stunning textile artwork.

More information on the 'Chesterfield in Lockdown' exhibition and instructions for how to create your own fabric square can be found at:
www.chesterfield.gov.uk/museum.

Small increase in council tax amid Covid-19 recovery

Residents have seen a small increase to council tax – an extra 6.4 pence a week for the majority of properties in the borough – after the council agreed its 2021/22 budget.

It comes as figures show the Covid-19 crisis has led to more than £7.6 million in lost revenue for the council. We have been proactive in tackling this – applying for and receiving around £5 million from the Government and reducing costs by £900,000 – but this still left a budget shortfall of £188,000.

The increase means a rise of 6.4 pence a week for the majority of properties in the borough (Band A) from April – a total rise of £3.33 on last year's bill for the council's services.

For a Band D property, this would amount to 9.6 pence a week, and an overall increase of £5 for 2021/22.

Councillor Tricia Gilby, Council Leader, said: "Increasing council tax by any amount is never a decision we take lightly, and I understand that for many people this is an incredibly difficult time.

"However, over the last year the council has faced unprecedented financial pressures caused by the impact of the ongoing pandemic.

"At the start of this, the Government asked this council to spend whatever it takes to meet the challenges presented by Covid-19 – with a commitment to reimburse this in full.

"It is fair to say that we have taken full advantage of every form of Government assistance that has been available to us, but this falls significantly short of our total lost revenue, which to date stands at £7.6m. The Government has not kept its promise.

"Even with Government grants, and the savings we have made, we are still facing a budget shortfall which must be addressed so we can provide the facilities and services that our residents and businesses rely on and at the quality they rightfully expect.

"The council provides more than 50 different services for residents, including emptying bins, keeping our streets clean, providing award-winning parks and open spaces, operating sports and cultural venues, collecting waste and

recycling and making sure that people's health and wellbeing is protected through our food safety and licensing activities.

"Throughout the pandemic we are keeping these essentials running in line with Government guidance, and many of our staff have been redeployed to support the key services which are needed in the ongoing fight against Covid-19, to protect our most vulnerable residents.

"I can assure residents that the extra cash we raise through the council tax increase will be put to good use in advancing the bold commitments the council has set out in both our economic and community Covid-19 recovery plans – as ever, putting our communities first."

Although Chesterfield Borough Council collects council tax, the council keeps only 10 per cent of the money collected. The remainder goes to:

Your resident's parking permit

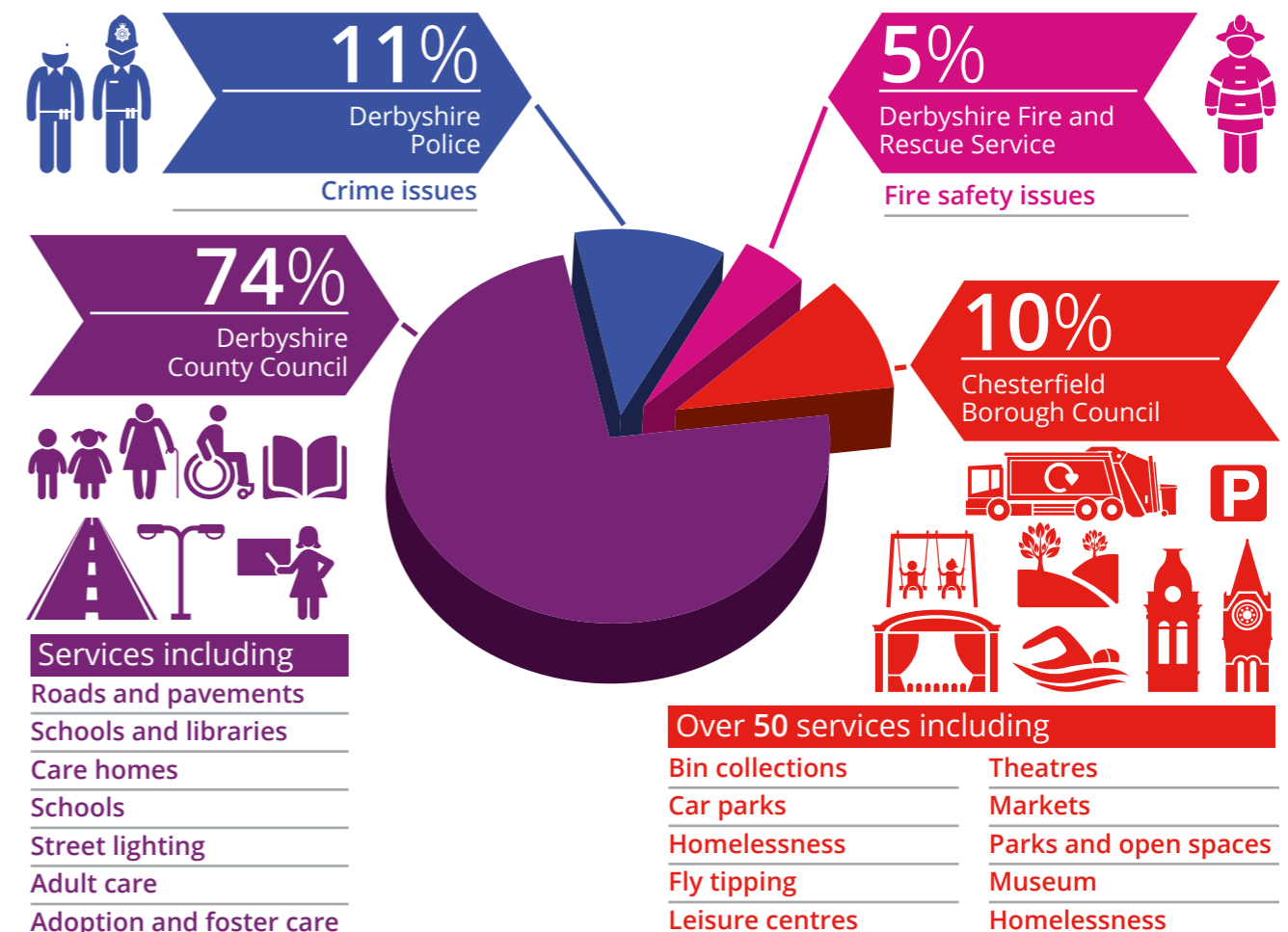
You should have already received your annual parking permit in the post – and using it regularly can make you savings which will offset the small council tax rise.

Using it to park and shop in the town centre is also a great way that we can all support local businesses following the impact of the Covid-19 pandemic.

The permit allows you to park in most of the council's off-street car parks for free before 10am and after 3pm Monday to Saturday and all day on Sunday and Bank Holidays.

If you used it to park every week for two hours, you could save around £140 a year.

The full list of car parks that you can use your permit in is printed on the back of the card – or can be viewed at www.chesterfield.gov.uk/residents-parking-permit



Love Food Hate Waste



Last year in the UK around 6.5 million tonnes of food waste was thrown away, and of that 4.5 million tonnes was still edible!

It takes lots of time, energy, and effort to create food – and by working together we can tackle food waste, save money and help the environment.

The average UK family throws away around £720 of edible food every year. That means if you reduce that amount you could save up to £60 a month.

Producing food is costly, it takes care and attention but also energy and water. These are all precious resources and wasting them not only has a financial cost it is also costly for the environment.

Councillor Amanda Serjeant, deputy leader of the council, said: "Food waste is something that we can all do our bit to help reduce. Making a couple of simple changes can help ensure less food goes in the bin – this will have a positive effect on the environment because it means the resources used to create food are not being wasted."

Proper storage can help extend the shelf life of food and your freezer is a great way of reducing how much you throw away, while stocking up on easy meals for the future.

There are also lots of great recipes online that provide fantastic inspiration for easy meals using leftover ingredients.

Find out more about food waste, get some simple tips on storage and ideas on how to use leftovers by visiting: www.lovefoodhatewaste.com



WASTING FOOD FEEDS CLIMATE CHANGE.

If we all used our loaf and stopped chucking bread in the bin it could do the same for greenhouse gas emissions as planting 5.3 million trees.

Getting rid of food waste responsibly

Whilst we can all make small changes to minimise food waste sometimes it is unavoidable, but you can do your bit by getting rid of it in a more sustainable way.

Starting your own compost heap in your garden is a great way to deal with fruit and vegetable peelings and garden waste, plus you'll get fantastic compost at no cost. Find out how to get your compost heap started here: www.recyclenow.com/reduce-waste/composting



If you don't have a garden please remember you can put food waste, including plate scrapings, leftover food, and peelings in your green bin. This is then taken to a composting facility which reduces waste going to disposal and helps ensure that food waste has a second life helping new plants and food to grow.



Please remember to keep glass separate.

It's important to keep glass bottles and jars separate from your other recycling – please place in the black caddy or hessian sack and not in the bin itself.

Glass mixed in the blue bin causes problems when the material is sorted for recycling. Keeping it separate means it can go straight to be made back into new glass.



Missing a caddy?

If you need a replacement please request one at:

www.chesterfield.gov.uk/bin-problems

Bin collection dates altered due to Bank Holidays:

Bank Holiday Monday 31 May, will be made on **Saturday 29 May instead.**

Bank Holiday Monday 30 August, will be made on **Saturday 28 August instead.**

Building affordable, green homes for local families

Families in Chesterfield are settling into new homes as we continue to build new council houses across the borough as part of our commitment to provide more affordable homes for local families.

Four new-build properties have been built on Manor Drive, Brimington (shown below), and have now been let to local families.

The development includes three two-bedroom houses and a three-bedroom bungalow with wheelchair access.



Built by local contractor, Robert Woodhead Ltd, these new homes are the first council homes to be built in Brimington South in over 30 years. Each property features a fully fitted kitchen and bathroom and is decorated throughout. The gardens are also fully turfed with a small patio area to the back.

In response to the climate emergency that was declared by council leaders July 2019, the council is also committed to ensuring that its existing housing stock is as energy efficient as possible. Each of the new properties on Manor Drive has increased levels of insulation throughout and has electric vehicle charging points installed (shown right).



Ten modular build properties have also been developed at Heaton Court, Brampton. The properties are the first of their kind for Chesterfield and were constructed off site before being transported to Brampton where roofing, rendering and cladding were completed by Fortem, and handed over to the council to be added to the housing register.

This unique manufacturing processes cuts construction waste by 90% and will also bring a range of energy efficiency benefits for tenants.

Councillor Chris Ludlow, cabinet member for housing, said: "We're committed to meeting the housing needs of local people – now and in the future – and these new properties will provide affordable, modern and accessible homes for families in our borough.

"It is important that people looking for a new home have a choice of good quality homes to rent. Our ambition is to create an additional 100 new council homes across town by 2023 and with the completion of these properties, along with other ongoing projects, we're well on track to reach this target.

"We also need to make sure that all our properties contribute to building a more sustainable future, so we're always looking for options on how we can make new homes more energy efficient. Living in a warm and energy efficient home is not only better for our planet, it will also reduce costs to run the property, offering affordable warmth to our tenants."



Images from Heaton Court

Helping people facing homelessness

Making sure that all residents in Chesterfield have a safe and secure home is a key priority for us and our partners, and we're committed to making sure no one has to sleep rough on the streets.

Over the past year, this has been more important than ever following the Covid-19 pandemic and we've been doing all we can to make sure everyone had access to the support they need.

Throughout the pandemic, we have been actively engaged in the Derbyshire Homeless Officers Group, delivering Derbyshire's response to the Government's 'Everyone In' initiative, a national effort to house all rough sleepers following the outbreak of Covid-19.

Following this success we have been leading the 'Keeping Everyone in' initiative for Derbyshire, working with statutory partners and the voluntary and community sector. The focus is to provide wrap-around intensive support to people to ensure that they are able to live independently and successfully in their new homes.

Our dedicated team has also been available throughout the pandemic, providing advice and signposting local residents to additional support that is available to prevent them from becoming homeless.

An exciting new partnership was also launched in October – working with South Yorkshire Housing Association (SYHA) to support people in Chesterfield who are currently experiencing homelessness and are staying in temporary accommodation. The 'Housing First' project

provides specialist accommodation and support for the most vulnerable rough sleepers.

Over the previous two years in partnership with other councils and Derby City Mission, we have successfully run the night shelter but unfortunately it was simply not a safe option last winter. The Government guidance was clear – accommodating people in these kinds of shared spaces was too high-risk in terms of exposing them to Covid-19.

Instead, we put in place a range of Covid-safe options to support rough sleepers, including accommodation such as furnished council-owned properties, local B&Bs and hotel rooms.

Councillor Chris Ludlow, cabinet member for housing, said: "The way in

which the council and our partners have come together to ensure we could house all of the borough's rough sleepers through the period of the Covid-19 lockdown has been nothing short of outstanding.

"Through a number of schemes and partnership working, we have successfully prevented 295 individuals and families from becoming homeless by providing them with the support they need or offering them temporary accommodation."

If you, or someone you know needs support please call 07870 277291 or email homelessness.prevention@chesterfield.gov.uk

"We have successfully prevented 295 individuals and families from becoming homeless by providing them with the support they need or offering them temporary accommodation."

Discretionary Housing Payments

It is possible that you may be able to get extra help towards your rent through the Discretionary Housing Payment scheme.

These payments are made to people in exceptional hardship, who need extra help with their housing costs.

The scheme has been a lifeline for many people over the past year, providing them financial support to cover housing costs – such as rent payments – if their income has been affected by the Covid-19 pandemic.

You can apply for Discretionary Housing Payments if you receive Housing Benefit or the housing costs element of Universal Credit. For more information or if you wish to make a claim, please visit: www.chesterfield.gov.uk/dhp where you can make a claim online or phone 01246 345484 to ask for a paper form.

The council is committed to making sure that our residents are not missing out on the money they are entitled to. That's why our benefits advisors are on hand to help you find out more about other grants available to you and help you with the application process. More information is available at: www.chesterfield.gov.uk/benefits-and-advice

Reducing the risk of fire at home

As a responsible landlord, keeping you and your family safe in your home is one of our top priorities – and our team is always on the look-out for hazards which pose a fire risk.

When a tenant called us to say that their heating wasn't working during a cold spell earlier this year, our repairs team was quick to respond.

While there was no operational fault with the central heating, the resident was unsure how to use the control settings, and so was reluctant to use it – opting instead for electric heaters which were quickly identified by our team as being a hazard.



Eager to ensure the resident was safe and warm, staff alerted the council's Independent Living Service team who then visited the property to discuss different options for heating her home, and the repairs team was able to provide her with a new fire – which offered the warm and homely

'glow' she was after, rather than the central heating system she didn't want to use.

Tenants and residents are now being urged to make sure they regularly check their electrical appliances to avoid the risk of fire.

Councillor Chris Ludlow, cabinet member for housing, said: "Thanks to the quick-thinking action of our teams, we were able to remove the broken appliances and prevent the risk of fire in this case. But it's important that we all remember to check our appliances regularly. If you are a council tenant and you notice something isn't right, make sure you report it straight away."

Derbyshire Fire and Rescue Service also offer 'Safe and Well visits' where they will visit your property will provide you with advice to help make your home a safer place. More information can be found at www.derbys-fire.gov.uk/safety/at-home/safe-and-well-visits

Contact us

We provide more than 50 services to our residents including: waste collection and recycling, street cleaning, leisure and park facilities, housing, environmental protection, planning, regeneration, housing, markets, theatres and tourism.

The answers to most of your queries will be available on our website: www.chesterfield.gov.uk and you can manage a range of council services through My Chesterfield (register at www.chesterfield.gov.uk/mychesterfield)

General enquiries - (01246) 345345	For housing related queries please call our main number (01246) 345345 except for:
For enquiries about specific services call:	Careline - 0300 323 0076
Chesterfield Theatres box office	Homelessness prevention team - (01246) 345825
(01246) 345222	homelessness.prevention@chesterfield.gov.uk
box.office@chesterfield.gov.uk	Homelessness (out of hours) - 0845 6058 058
Chesterfield Visitor Information Centre	or (01629) 532600
(01246) 345777 or 345778	On the Move – for all council house waiting list and allocations queries
tourism@chesterfield.gov.uk	Visit the website at: www.onthemove-cbc.org.uk
Healthy Living Centre - (01246) 345666	(01246) 345700
hlcenquiries@chesterfield.gov.uk	onthemove@chesterfield.gov.uk
Queen's Park Sports Centre - (01246) 345555	Neighbourhoods team - (01246) 345071
qpsscquiries@chesterfield.gov.uk	neighbourhoodsteam@chesterfield.gov.uk
Chesterfield Citizen Advice - 0808 278 7843.	Rents and rent recovery - (01246) 345501 or 345510
	Reporting housing repairs - 0800 5875 659
	repair.requests@chesterfield.gov.uk
	Emergency housing repairs – out of hours only
	(01246) 345041

Are we accessible to you?

کیا ہم تک آپ کی رسائی ہے؟ اگر نہیں تو ہمیں بتائیے!

你可覺得易於與我們接觸？若不同的話，請提出要求。

Czy łatwo jest skontaktować się z nami? Jeżeli nie, powiedz nam o tym!

Siamo accessibili nei vostri riguardi? In caso contrario rivolgetevi a noi!

We aim to provide what you need to be able to understand our information or talk or write to us.

On request we will provide free of charge:

Language interpreters, including for sign language

Translation of written material into other languages

Material in braille, large print and recorded onto CD.

Please contact us:

General enquiries: 01246 345345

Text: 07960 910264

Web: www.chesterfield.gov.uk

Email: info@chesterfield.gov.uk

Get the latest news

Follow us on:



@ChesterfieldBC



ChesterfieldBoroughCouncil



Chesterfield Borough Council



chesterfieldbc

See our videos on **YouTube** - search for Chesterfield Borough Council's channel.

Book tickets for the summer play season

There are some fantastic shows planned at Chesterfield Theatres in 2021 including a return for the annual summer play season.

The three plays being performed for the summer play season in August are *The Mating Game*, *The Fancy Man* and *All About Murder*. There is also a special offer for the summer season where if you book tickets for **two plays** you will receive tickets for all three performances.

All three performances as part of the summer season are comedies designed to put a smile on your face as we move out of lockdown restrictions.

The performances are being staged by regular performers that we are delighted to be able to welcome back to Chesterfield Theatres, with *The Mating Game* being presented by Rumpus Theatre Company and *The Fancy Man* and *All About Murder* being presented by Tabs Productions.

Find out more about the summer play season and book your tickets online at www.chesterfieldtheatres.co.uk/summer-plays, or call the Box Office on 01246 345222.

Information included is correct at time of printing, with the Pomegranate Theatre set to re-open from 17 May in line with the Government's roadmap. The Winding Wheel Theatre is being used as a Covid-19 vaccination centre and is due to re-open later in the summer.

[CHESTERFIELD THEATRES]
2021 SUMMER Play Season
 TABS PRODUCTIONS PRESENTS
THE FANCY MAN
 THE MOVING ROMANTIC COMEDY BY MIKE STOTT

TUE 24 - SAT 28 AUG

SPECIAL OFFER 3 FOR 2 PLAYS
 *Fancy Man 16 Aug

"Something for everyone, with high drama, pathos, plenty of laughs... the best thing staged in all my years of attending Pomegranate shows"
 Derbyshire Times on Tabs Productions previous production of The Fancy Man

Pomegranate Theatre, Chesterfield
 Tue - Sat evenings 7.30pm
 Wed 2pm & Sat matinees 3pm

BOOK NOW 01246 345 222
CHESTERFIELDTHEATRES.CO.UK

Presented by arrangement with Josef Weinberger Ltd, London.

LOTTERY FUNDING
 Arts Council ENGLAND
 Pomegranate Theatre
 CHESTERFIELD BOROUGH COUNCIL

Love

CHESTERFIELD

SHOP LOCAL.

