

COMMUNITY INFRASTRUCTURE STUDY



2009

CHESTERFIELD BOROUGH COUNCIL

ARE WE ACCESSIBLE TO YOU? IF NOT ASK US!

کیا ہم تک آپ کی رسائی ہے؟ اگر نہیں تو ہمیں بتائیے!

你可覺得易於與我們接觸？若不同的話，請提出要求。

Czy łatwo jest skontaktować się z nami? Jeżeli nie, powiedz nam o tym!

Siamo accessibili nei vostri riguardi? In caso contrario rivolgetevi a noi!

- We want everyone to be able to understand us.
- We want everyone to be able to read our written materials.
- We are committed to breaking down communication barriers to enable you to read and talk and write to us.
 - **On request we will provide free:**
 - ✓ Language interpreters, including for sign language.
 - ✓ Translations of written materials into other languages.
 - ✓ Materials in large print, on tape or in braille.

Please contact us –

Planning	01246 345811
General enquiries	01246 345345
Mobile text phone	079609 10264
Fax	01246 345252

- 我們想人人能夠明白我們。
- 我們想人人能夠讀給我們聽、與我們交談和寫信給我們。
- 若有提出要求，我們將會免費提供：* 語言傳譯，包括手語傳譯 * 翻譯成其他語言 * 以盲人點字、大字體印刷及錄音帶供給訊息。

• ہم ہر شخص کو سمجھنا ہے اور ہر شخص سے بات کرنے کے لیے۔
• ہم ہر شخص کو پڑھنے کے لیے لکھی ہوئی چیزیں دیکھنے اور سمجھنے کے لیے۔
• چاہے جو بھی چیزیں ہمیں پڑھنے اور بات کرنے کے لیے دے دیں گے۔
• اگر کوئی چیزیں دیکھنے اور بات کرنے کے لیے دے دیں گے۔
• اگر کوئی چیزیں دیکھنے اور بات کرنے کے لیے دے دیں گے۔

請與我們聯絡

請翻閱

請與我們聯絡 –

一般查詢	01246 345345	手機傳文	079609 10264	079609 10264	موہاٹل ٹیکسٹ فون	01246 345345
傳真	01246 345252	環境查詢	01246 345734	01246 345734	ماحولیات کے متعلق سوالات	01246 345252
房屋查詢	01246 345177	文康設施	01246 345096	01246 345096	تفریحی سرگرمیوں کے متعلق سوالات	01246 345177

PARA	CONTENTS	PAGE
1.0	Introduction	4
2.0	Purpose	5
3.0	Scope	5
4.0	Approach and Methodology	5
5.0	Existing Facilities	6
5.2	Leisure and Community Facilities	7
5.3	Schools and Colleges	8
5.6	Health Centres, GPs and Dentists	10
5.9	Libraries	12
5.10	Post Offices	13
5.11	Places of Worship	13
5.12	Police and Housing Offices	13
6.0	Conclusions	14
Appendix A	Accessibility Maps	15
Appendix B	Existing facilities at a ward level	18
Appendix C	Unemployment rates at a ward level	33

1.0 Introduction

- 1.1 Chesterfield Borough Council (CBC) is replacing its current Replacement Local Plan adopted in 2006, with the Chesterfield Local Development Framework (LDF). The LDF will consider development and infrastructure requirements over the period to 2026. The basis of the LDF's policies and proposals will be a thorough understanding of the needs, opportunities and constraints in the area. The early development of this "evidence base" is a priority set out in Chesterfield Borough Council's Local Development Scheme 2. This Community Infrastructure Study is a key element of this process.
- 1.2 The draft Regional Spatial Strategy Policy 7 'Regeneration of the Northern Sub-area' includes the objectives of strengthening the sub-regional centres by providing new services and facilities and improving the social infrastructure. 'Social infrastructure' is defined as 'the range of activities, organisations and facilities supporting the formation, development and maintenance of social relationships in a community'. It can include provision of community facilities.
- 1.3 **The aims of the study are to:**
- Identify and map key community facilities within Chesterfield Borough
 - provide an evidence base for Chesterfield Borough Council's Local Development Framework
- 1.4 This study addresses the strategic requirements for community infrastructure in the borough. It does not provide detailed information on facilities such as capacity, condition of building or useage. Nor does it attempt to provide any information on specific project work of other agencies involved in the management or improvement of community facilities in the borough, such as the County Council or Primary Care Trust.
- 1.5 **CONTACT DETAILS:**

For further information about this study please contact:	
Lauren Dempsey Senior Planner , Forward Planning Chesterfield Borough Council Town Hall, Rose Hill Chesterfield Derbyshire, S40 1LP Tel: 01246 345794 Fax: 01246 345743 Email: lauren.dempsey@chesterfield.gov.uk	Richard Bryant Principal Planner, Forward Planning Chesterfield Borough Council Town Hall, Rose Hill Chesterfield Derbyshire, S40 1LP Tel: 01246 345790 Fax: 01246 345743 Email: richard.bryant@chesterfield.gov.uk

2.0 Purpose

- 2.1 The study identifies the extent and location of existing and committed community infrastructure. This includes identifying areas of known surplus and/or deficiency and future plan or strategies (outside of the LDF) that may affect this provision. The results will help to inform decisions about the location and sustainability of LDF proposals for new development, particularly for housing but also for other uses, and about policies on contributions towards community infrastructure for the period to 2026.
- 2.2 This report provides a picture of the present and will help to develop a vision for the future of the community infrastructure for the Borough of Chesterfield. The evidence gathered was achieved by a thorough audit of the current community infrastructure in the Borough in terms of the type of facilities, their location and in the case of schools, their capacity.

3.0 Scope

- 3.1 The Community Infrastructure Study provides evidence to support the LDF only in relation to:
 - Schools and Colleges
 - Places of Worship (churches, religious buildings and cemeteries)
 - Health Centres, Doctors and Dentists
 - Police Stations
 - Housing Offices
 - Libraries
 - Post Offices
 - Leisure Facilities (buildings owned by Chesterfield Borough Council, not including parks and open spaces)
- 3.2 Commercial facilities including hotels with rooms for hire and commercial leisure provision are not considered within this study.

4.0 Approach and methodology

- 4.1 This preliminary stage of the study was desk based quantitative research, including analysis of statistical data supplied by CBC and Derbyshire County Council, including population volume and profile, and provision of school and childcare places as relevant. Policy statements and plans were also examined and discussions were held with key Chesterfield Borough Council personnel. The information gathered was mapped on the council's GIS system and data is also held in table form.

Accessibility

- 4.2 A catchment of 400 metres was applied to the majority of community facilities as an indicative guide to show any obvious gaps in provision. This distance has been used in other documents such as the Open Space and Play Provision SPD and is commonly used as a reasonable distance for walking.
- 4.3 Derbyshire County Council uses 'Accession' software to ascertain the distance and travel time by means other than private vehicle (i.e. walking, cycling and public transport) from any location to a facility/service. Maps showing accessibility of primary schools (including infant and junior schools), GPs and Post Offices, based on weekday morning travel, are included in Appendix A.

5.0 Existing Facilities

5.1 Chesterfield is currently served by the following facilities:

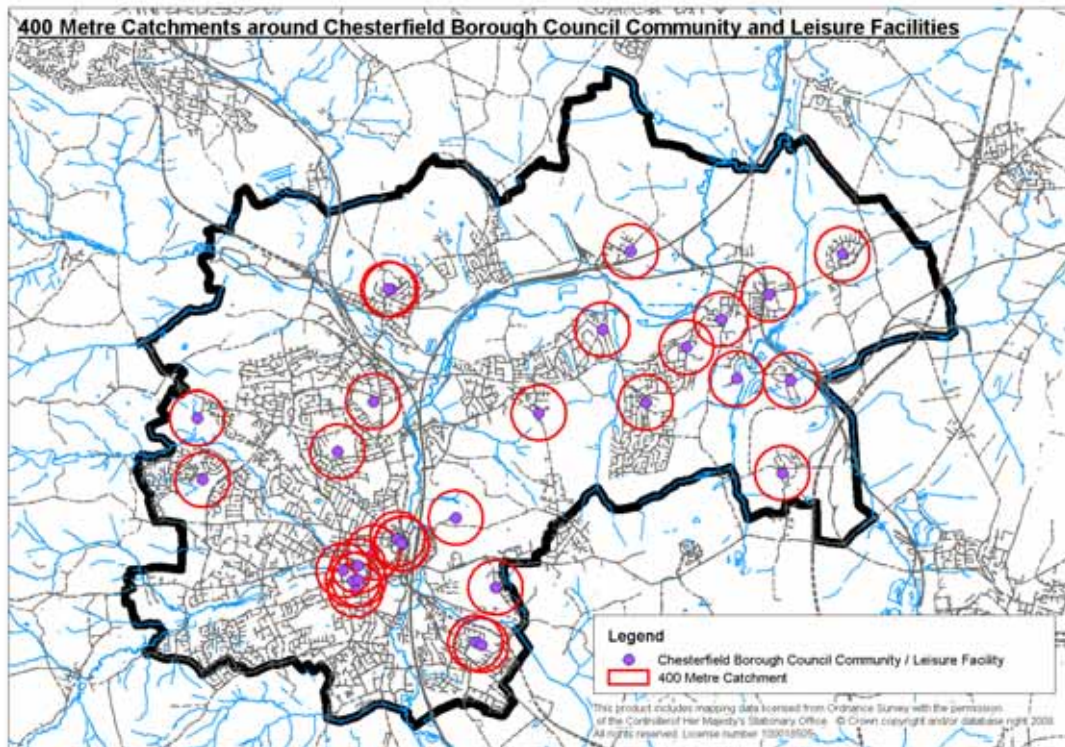
- 59 Churches and religious buildings and 11 cemeteries
- 19 Doctors' surgeries, 3 health centre's, 2 hospitals and 23 dentists' practices
- 8 Secondary schools and 1 college on a split campus
- 8 Infant, 7 junior and 21 primary schools
- 5 Libraries
- 2 Police stations
- 11 housing offices
- 18 post offices
- 29 Leisure / community facilities

The distribution of the main community facilities across the Borough by ward and population is detailed in Appendix B.

Leisure Facilities

- 5.2 The east of Chesterfield has a good spread of leisure facilities, and there is a concentration in the town centre. There are gaps, notably on the west of Chesterfield, in the Rother, Walton and West Wards. It is worth noting that the facilities in this survey are buildings, not including parks and open spaces, owned / managed by Chesterfield Borough Council, therefore there could be private provision in some parts of the borough. The borough council Leisure department are currently reviewing the facilities they own and manage.

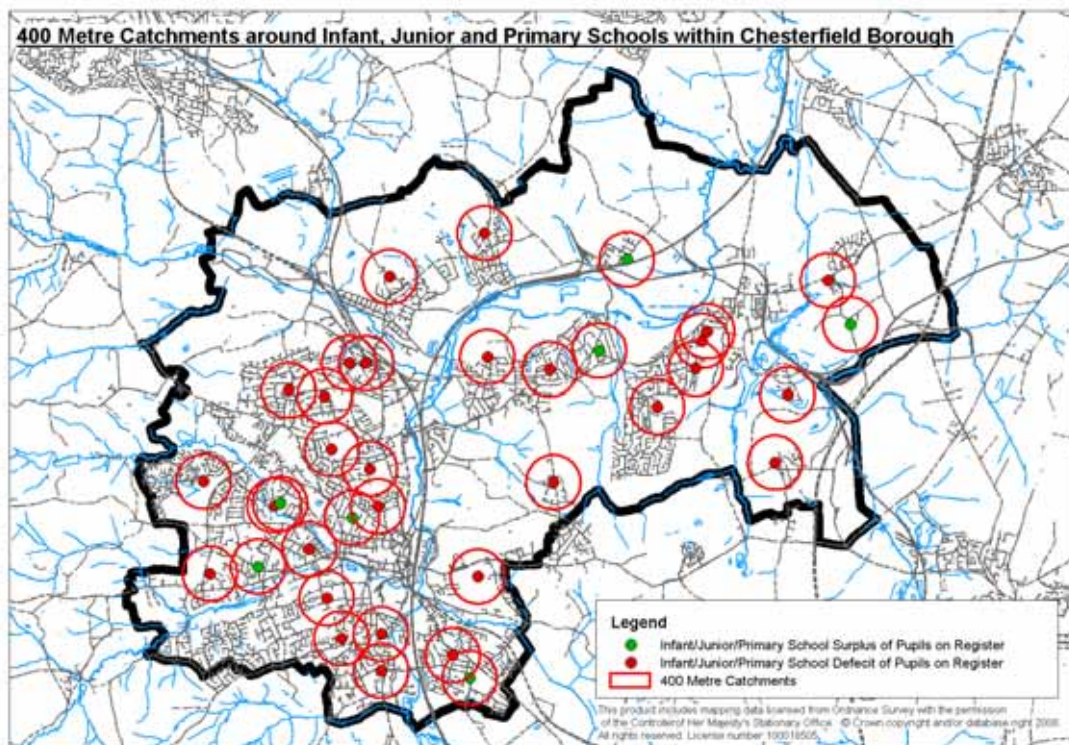
Figure 1: Map of Leisure Facilities



Schools and Colleges

- 5.3 The DFES Home to School Travel and Transport Guidance (2007) advises that journeys to primary schools should take no longer than 45 minutes each way, and 75 minutes for Secondary schools. This is a maximum time, and in terms of sustainable transport the borough council takes the view that children should be able to walk, cycle or get public transport to school. Therefore for the purposes of this study a catchment area approach has been adopted using distance rather than journey time. The catchment area around primary, infant and junior schools is 400m, with 2 km to secondary schools.
- 5.4 The Derbyshire County Council accessibility maps in Appendix A show the parts of the borough with a morning (7am – 9am) journey time using public transport and walking / cycling of 0 – 20 minutes and 20 – 30 minutes to a primary school.

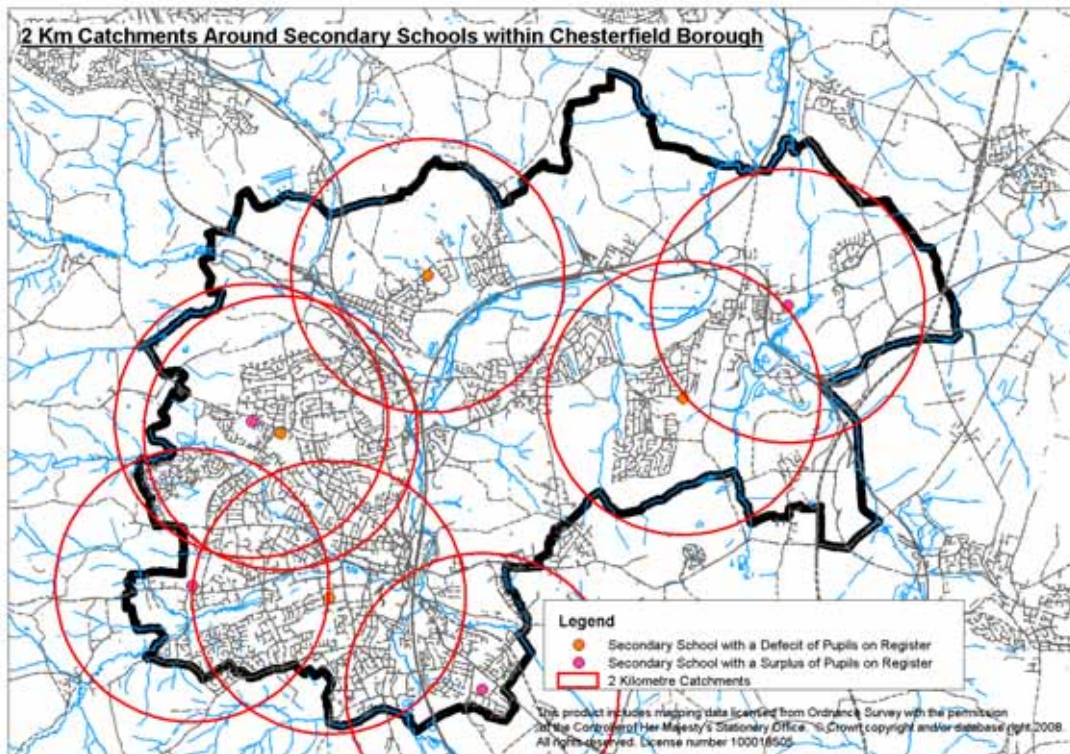
Figure 2: Map of Infant, Junior and Primary Schools



- 5.4 There is a good geographical distribution of Infant, Junior and Primary schools throughout the borough, with the exception of Walton Ward and Linacre Ward which have no school. Derbyshire County Council decided that the allocated school site in Walton was not needed and that needs could be met at Holymoorside, in North East Derbyshire District. Also, the built up part of Hollingwood and Inkersall Ward has no school within 400 metres.

- 5.5 The Accessibility maps show that there are 5 areas in the borough that have a journey time of 20 – 30 minutes to a primary school. These are northern parts of Lowgates and Woodthorpe and Barrow Hill and New Whittington, and minor parts on the edges of Old Whittington and Dunston. Therefore although Walton and Linacre wards have no school, there are schools nearby.
- 5.6 Although the majority of the schools are currently showing a deficit of pupils on the register, Derbyshire County Council has no plans to close or merge any of the schools at present. It is also worth noting that although 7 schools show a surplus of pupils on register, this could be due to popularity of schools rather than unmet need within the borough. The pupil numbers are for 2008. There are projected figures for the next 5 years but for the purposes of this study the current roll numbers are sufficient.

Figure 3: Map of Secondary Schools



- 5.7 The vast majority of the borough is within 2 kms of a secondary school. There are some schools showing surplus of pupil numbers and some showing deficit, due to a number of factors. Derbyshire County Council has no current plans for any changes to secondary schools in Chesterfield.

Health Centres, Doctors and Dentists

- 5.8 The Wheatbridge Medical Centre has replaced the GPs on Brocklehurst Piece and Tennyson Avenue. There has been a planning application for a new health centre in Grangewood which has been approved subject to a legal agreement. This will be in addition to the GPs and health centres included in this study.
- 5.9 There is a reasonable geographical distribution of GPs and health centres within the borough. However, in the Rother Ward there is no GP or health centre, and this ward has one of the top ten highest unemployment rates in Derbyshire (4.1 – 5.4% see Appendix C). Linacre ward also has no provision and there is a gap in provision in Walton, though these wards are relatively affluent and have a lower than average unemployment rate (0.8 – 2.3% see Appendix C). The Moor ward has no GP or health centre and has an unemployment level above the national average (Appendix C).
- 5.10 The DCC accessibility maps show 7 areas on the edge of the borough that have a journey time of 20 – 30 minutes to a GP. They are mainly at the northern and eastern extremities, with a small area in the Dunston ward. This does not correlate with the geographical distribution of GPs but reflects the poorer provision of public transport in the northern and eastern part of the borough.

Figure 4: Map of GPs and Health Centres

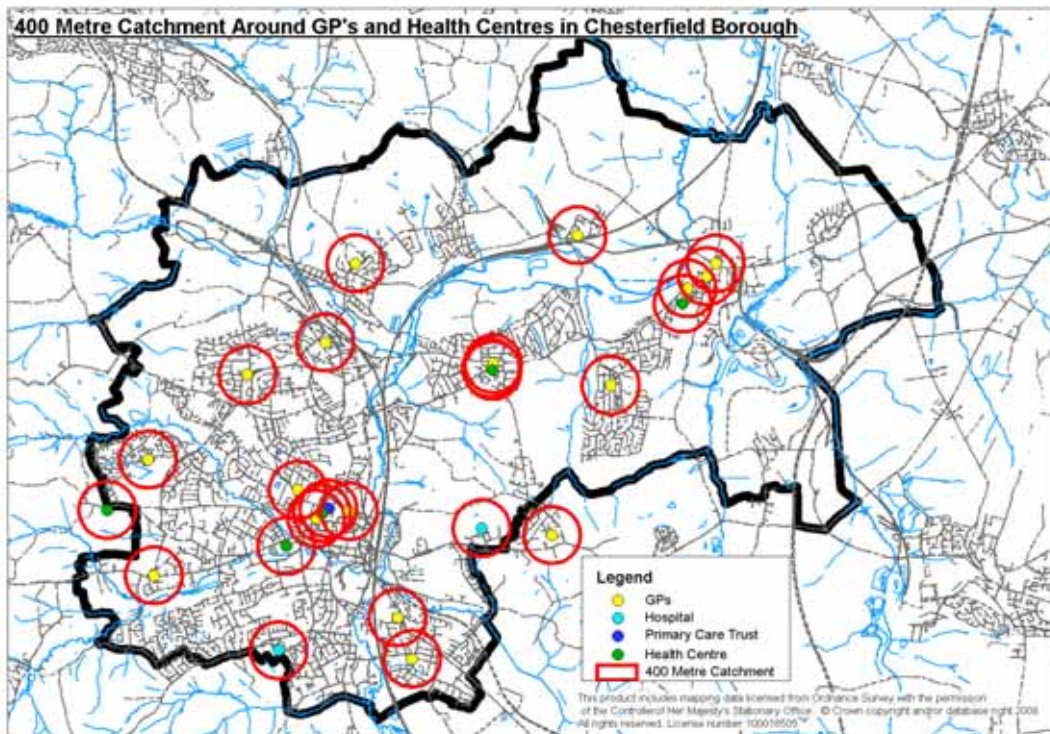
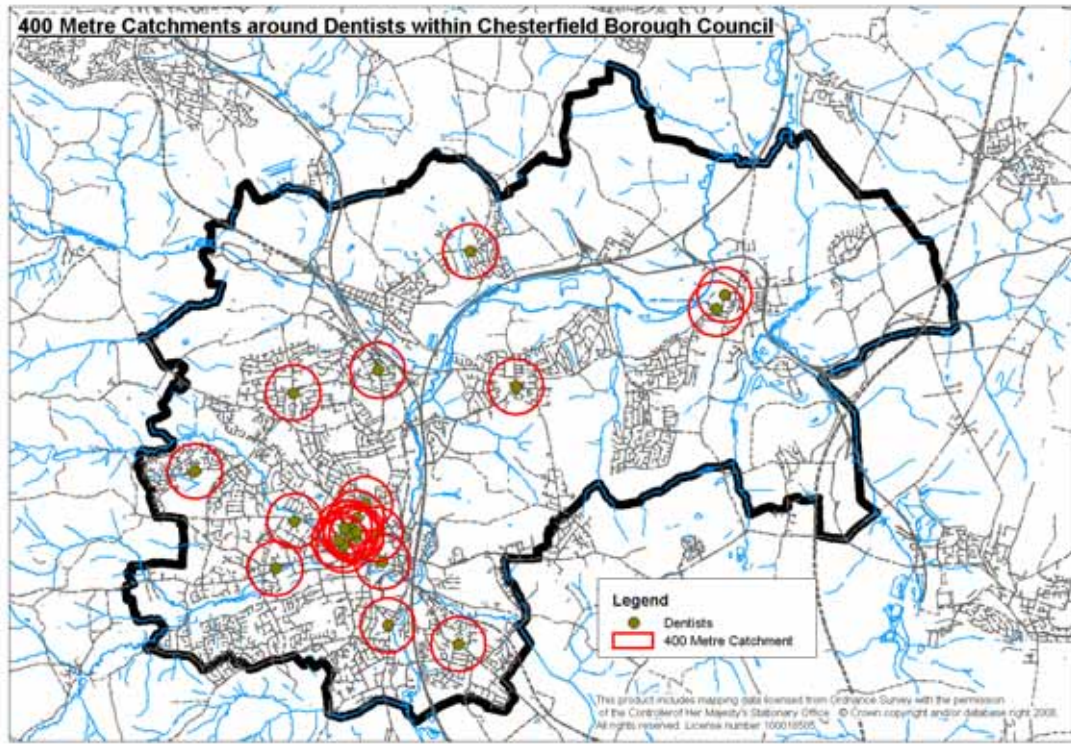


Figure 5: Map of Dentists

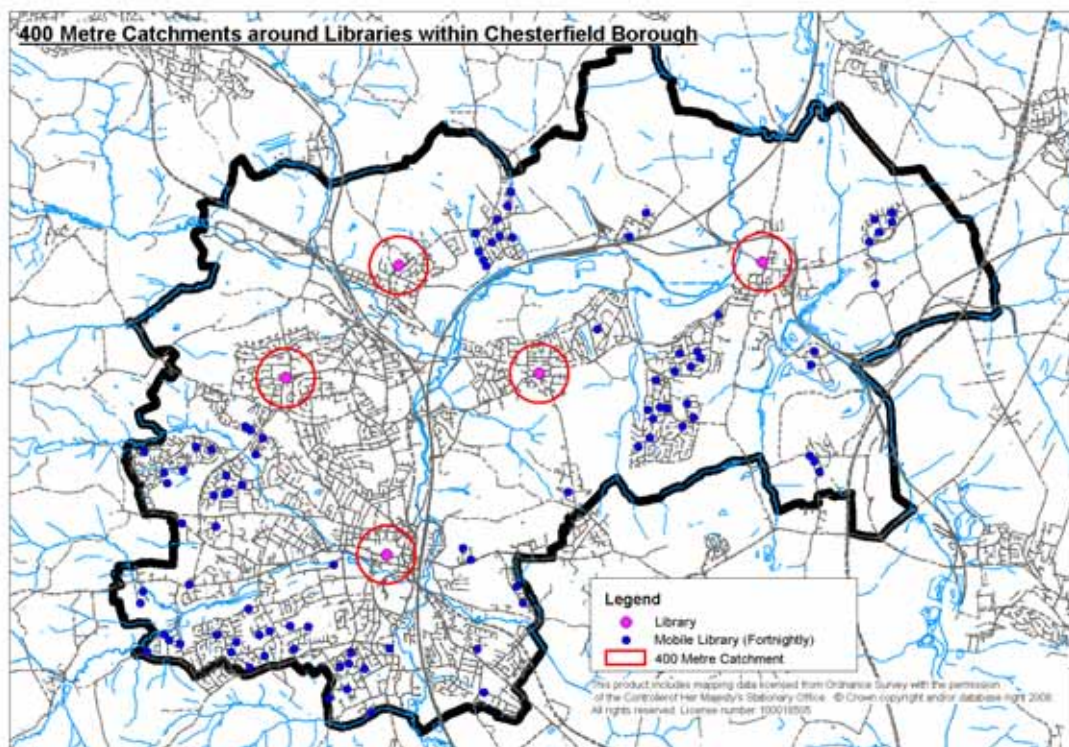


5.11 There is a similar distribution of dentists in Chesterfield, with a concentration within the town centre. The main gaps appear to be Walton, Hollingwood and Inkersall, and Middlecroft and Poolsbrook ward, which has one of the top ten highest unemployment rates in Derbyshire (4.1 – 5.4% see Appendix C). The information does not specify which dentists take NHS patients.

Libraries

- 5.12 As well as the 5 libraries, there are fortnightly mobile library bus services covering various parts of the borough, these are marked on the map. St Helens, Brockwell and the Moor wards are not particularly well served, which could be more of an issue for St Helens as this ward is within the top ten of highest unemployment rates in Derbyshire (4.1 – 5.4% see Appendix C).

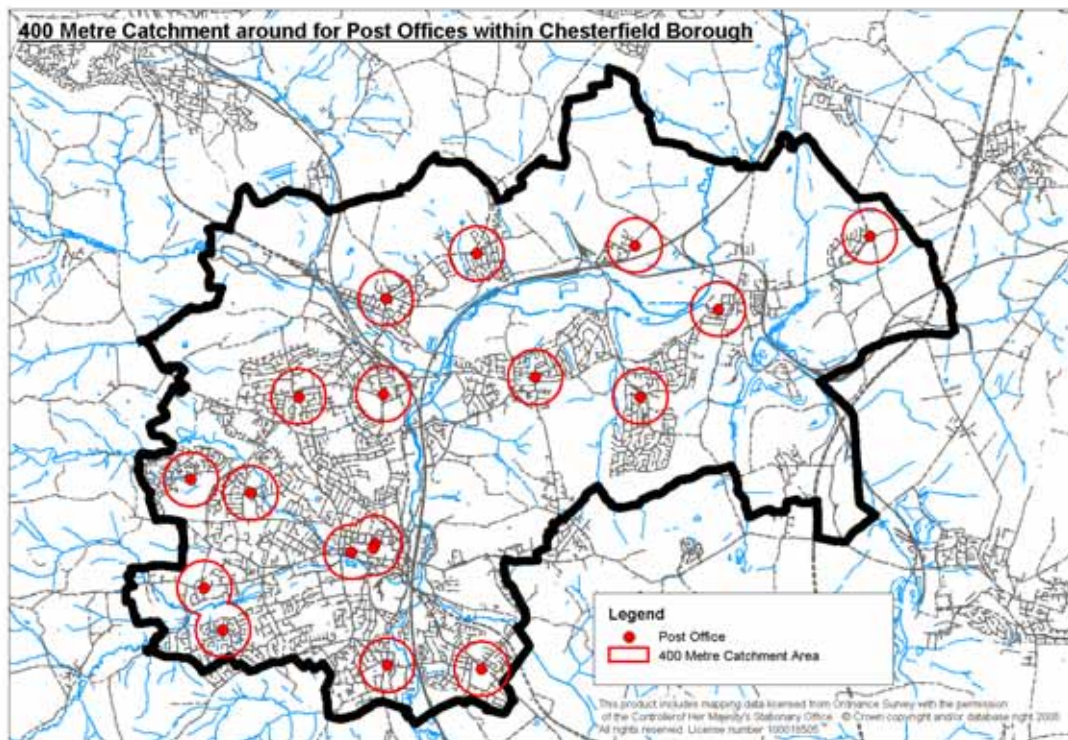
Figure 6: Map of Libraries



Post Offices

- 5.13 There is a good geographical spread of Post offices, although recent closures mean that there are larger areas of the borough that are not within a 400 metre catchment of a Post office. As with GPs, the DCC maps show poorer accessibility in the north east edges of the borough, with small areas in the north west.

Figure 7: Map of Post Offices



Places of Worship

- 5.11 There are 59 churches and religious buildings, and 11 cemeteries in Chesterfield. All wards in the borough have at least one church or religious building.

Police Stations

- 5.11 There are 2 Police stations in Chesterfield.

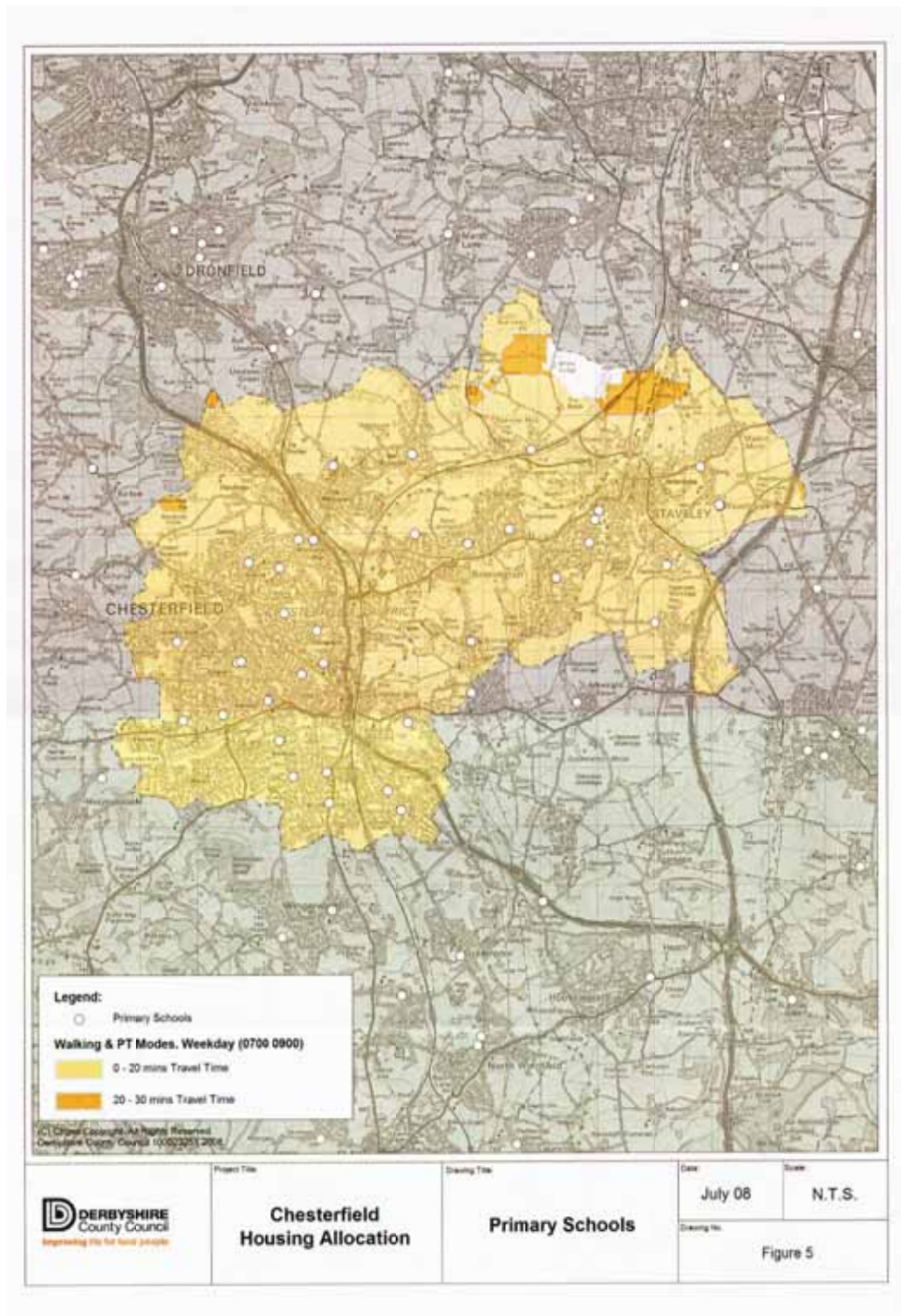
Housing Offices

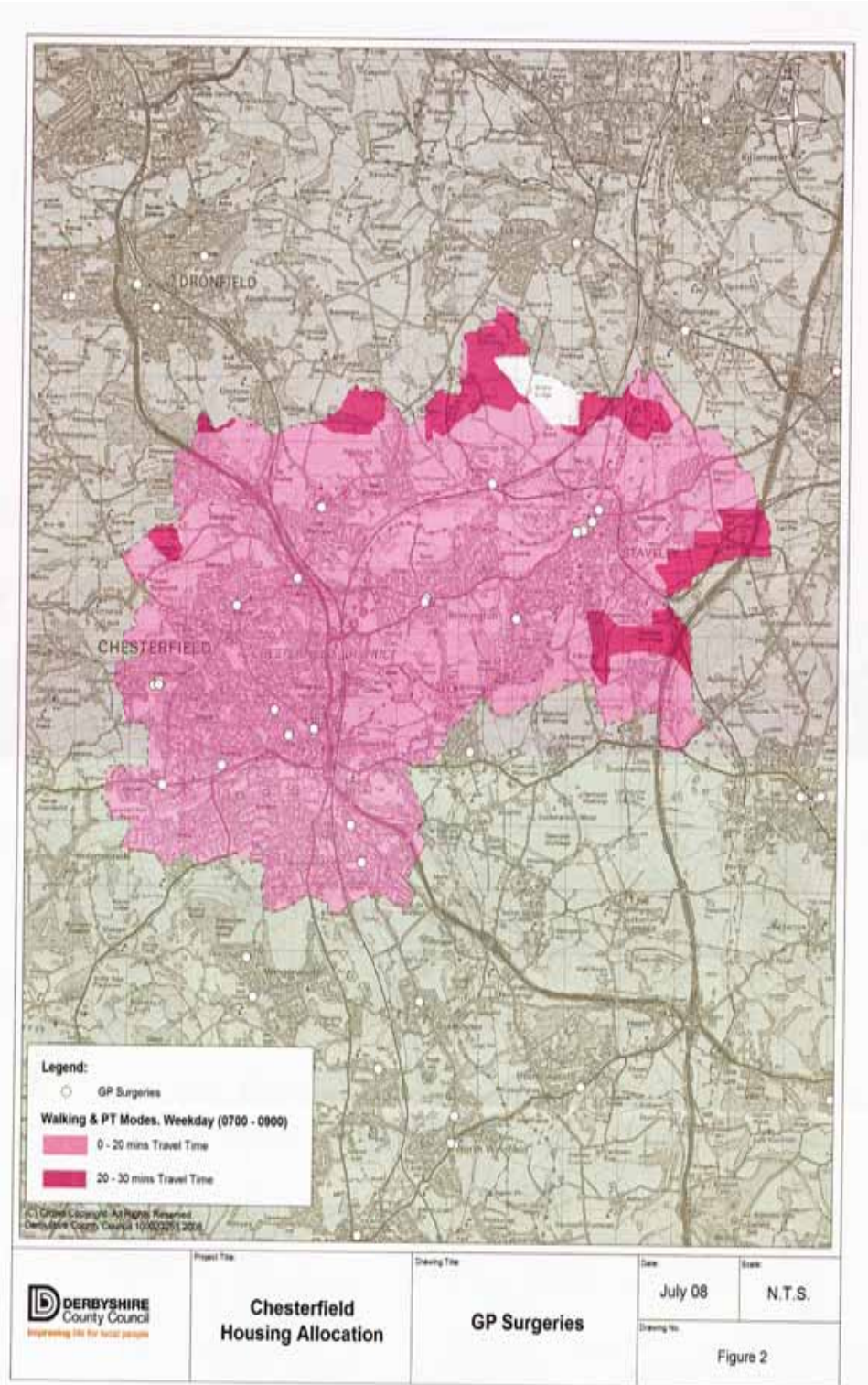
- 5.12 There are 11 Housing Offices in Chesterfield.

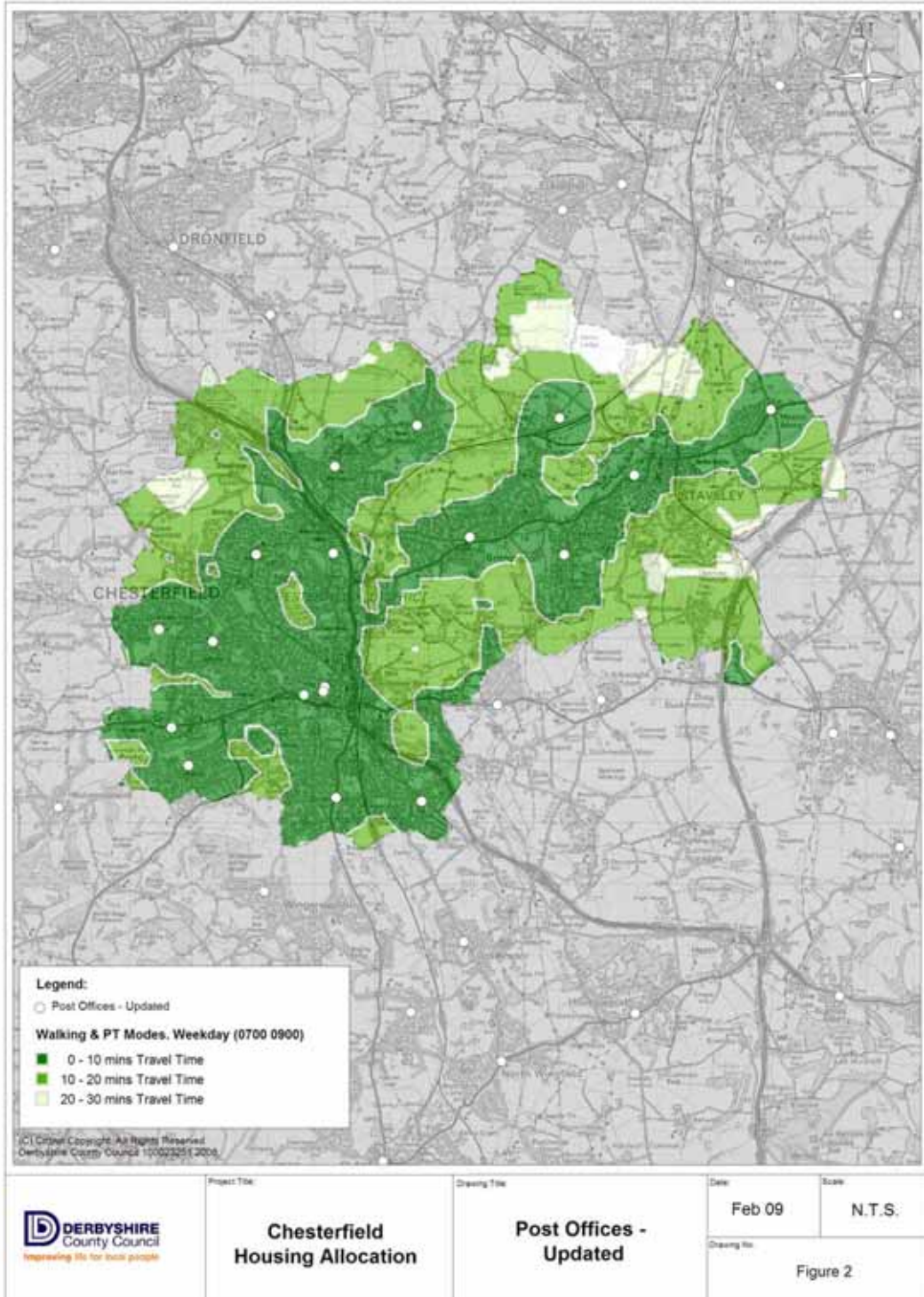
6.0 Conclusions

- 6.1 In terms of general provision of facilities on a ward basis, the Walton ward has the most gaps, with no leisure facilities, primary, infant or junior school or GP. Rother ward is also poorly served, and has no leisure facilities' or primary, infant or junior school. On the east of the borough, provision in general terms is good, with the exception of Hollingwood and Inkersall ward where much of the housing is further than 400 metres from an infant, primary or junior school and there is no dentist.
- 6.2 DCC accessibility maps show that it is the north east edges of the borough that have the longest journey times to the key facilities of primary schools, GPs and Post Offices. This contrasts with looking at the distribution of facilities on a ward basis, partly because Barrow Hill and New Whittington and Lowgates and Woodthorpe are geographically larger than other wards in the borough. It also reflects public transport provision and indicates a need to ensure that new developments must include provision for public transport and / or community facilities.

APPENDIX A – Derbyshire County Council Accessibility Maps







Appendix B: Data on existing facilities at a ward level

Ward	Churches and Religious Buildings	Cemeteries	Population (2001)
Barrow Hill and New Wittington	5 - Whittington New Life Church, - St Barnabas Church, - Barrow Hill Methodist Church - St Andrew the Apostle Church - Catholic Church High Street	0	5774
Brimington North	3 - Mount Tabor Methodist Church - Brimington Congregational Church Sisterhood - St Michael's & All Angels (CE)	1 St. Michael and All Angels (Brimington) Closed ground	4178
Brimington South	1 Brimington Methodist Church	1 Brimington Cemetery New graves available	5950
Brockwell	6 - St Andrew's United Reformed Church - Religious Society of Friends (Quakers) - New Testament Church of God - Chesterfield Baptist Church - St Joseph's Convent Chapel - Catholic Church of the Annunciation	0	6087
Dunston	4 - Newbold Methodist	1 St John the	6132

	Church - Littlemoor Gospel Chapel - St John's Church - Whittington Moor Methodist Church	Evangelist (Newbold & Dunston) Closed ground	
Hasland	3 - Church of the Holy Family (RC) - Hasland Baptist Church - Hasland Methodist Church	0	5916
Hollingwood and Inkersall	1 - Inkersall Methodist Church	0	7214
Holmebrook	2 - Brampton Moor Methodist Church - Mount Zion Church	0	4124
Linacre	1 - Church of Jesus Christ of Latter Day Saints	1 Eyre Chapel (Newbold) Closed ground	4048
Loundsley Green	3 - Holmebrook Valley Church Centre - Church of the Ascension - Loundsley Green Methodist Church	0	3914
Lowgates and Woodthorpe	3 - St John the Baptist's Church - The Salvation Army (Staveley Corps) - Mastin Moor Methodist Church	1 St John the Baptist (Staveley) Closed ground	4324
Middlecroft and Poolsbrook	3 - Staveley Methodist Church - St Joseph RC Church - St Joseph RC Church	1 Staveley Cemetery New graves available	4205
Moor	2 - St Hugh's Church (RC) - Chesterfield Jamia	0	4350

	mosque		
Old Whittington	1 - St Bartholomew's Church	1 St Bartholomew's (Old Whittington) Closed ground	4129
Rother	4 - Spiritual Assembly of Baha'i's - Derby Road Methodist Church - St Augustines Church - Kingdom Hall of Jehovah's Witness	1 Boythorpe Cemetery New graves available	6128
St Helens	5 - Holy Trinity Church - Chesterfield Jamia Mosque - Chesterfield Jamia Mosque - Kingdom Hall of Jehovah's Witness - Christ Church and Holy Trinity	1 Holy Trinity Church (Newbold) Closed ground	4126
St Leonards	9 - Spiritualist Church - The Ragged School (FIEC Chapel) - Rose Hill United Reformed Church - Central Methodist Church - Elder Yard Unitarian Chapel - St Mary and All Saints' Parish Church - Derbyshire New Life Church - Chesterfield Christian Life Church - St Leonard's Church	2 Spital Cemetery New ground available St Mary and All Saints (Crooked Spire) Closed Grounds	6239
Walton	1 - Walton Evangelical Church	0	5971
	2	0	6036

West	- St Thomas' Church - Storrs Road Methodist Church		
TOTAL	58	11	98,845

Ward	Doctors	Dentists	Population (000's)
Barrow Hill and New Wittington	1	1	5774
Brimington North	2 + 1 Health Centre	0	4178
Brimington South	0	1	5950
Brockwell	3 + 1 Health Centre and Primary Care Trust HQ	10	6087
Dunston	2	2	6132
Hasland	1	1	5916
Hollingwood and Inkersall	1	0	7214
Holmebrook	1	1	4124
Linacre	0	0	4048
Loundsley Green	1	1	3914
Lowgates and Woodthorpe	1	0	4324
Middlecroft and Poolsbrook	2 + 1 Health Centre	2	4205
Moor	0	0	4350

Old Whittington	1	0	4129
Rother	0	0	6128
St Helens	1	1	4126
St Leonards	1 + 1 Hospital	3	6239
Walton	1 Hospital	0	5971
West	1	0	6036
TOTAL	19 + 3 Health Centre's + 2 Hospitals	23	98,845

Ward	Police Stations	Housing Offices	Population (000's)
Barrow Hill and New Wittington	0	0	5774
Brimington North	0	0	4178
Brimington South	0	0	5950
Brockwell	0	5	6087
Dunston	0	0	6132
Hasland	0	1	5916
Hollingwood and Inkersall	0	0	7214
Holmebrook	0	1	4124
Linacre	0	0	4048
Loundsley Green	0	0	3914
Lowgates and Woodthorpe	1	0	4324
Middlecroft and Poolsbrook	0	2	4205
Moor	0	1	4350

Old Whittington	0	0	4129
Rother	0	0	6128
St Helens	0	1	4126
St Leonards	1	0	6239
Walton	0	0	5971
West	0	0	6036
TOTAL	2	11	98,845

Ward	Libraries	Post Offices	Leisure Community Facilities	Population (000's)
Barrow Hill and New Wittington	0	2	1	5774
Brimington North	1	1	0	4178
Brimington South	0	0	2	5950
Brockwell	0	0	0	6087
Dunston	1	0	0	6132
Hasland	0	2	2	5916
Hollingwood and Inkersall	0	1	3	7214
Holmebrook	0	0	0	4124
Linacre	0	0	1	4048
Loundsley Green	0	2	1	3914
Lowgates and Woodthorpe	1	1	2	4324
Middlecroft and Poolsbrook	0	1	4	4205
Moor	0	2	1	4350

Old Whittington	1	1	2	4129
Rother	0	0	0	6128
St Helens	0	0	1	4126
St Leonards	1	3	9	6239
Walton	0	1	0	5971
West	0	1	0	6036
TOTAL	5	18	29	98,845

Ward	Secondary Schools	Colleges	Population (000's)
Barrow Hill and New Wittington	1 - The Meadows Community School	0	5774
Brimington North	0	0	4178
Brimington South	0	1 - Chesterfield College	5950
Brockwell	0	0	6087
Dunston	0	0	6132
Hasland	1 - Hasland Hall Community School	0	5916
Hollingwood and Inkersall	0	0	7214
Holmebrook	1 - Parkside Community School	0	4124
Linacre	2 - St Mary's Catholic High School - Newbold Community School	0	4048
Loundsley Green	0	0	3914
Lowgates and Woodthorpe	1 - Netherthorpe School	0	4324

Middlecroft and Poolsbrook	1 - Springwell Community School	0	4205
Moor	0	0	4350
Old Whittington	0	0	4129
Rother	0	0	6128
St Helens	0	1 - Chesterfield College	4126
St Leonards	0	0	6239
Walton	0	0	5971
West	1 - Brookfield Community School	0	6036
TOTAL	8	1 = Split campus	98,845

Ward	Infant Schools	Junior Schools	Primary Schools	Population (000's)
Barrow Hill and New Wittington	0	0	2 - New Wittington Community Primary School - Barrow Hill Primary School	5774
Brimington North	1 - Henry Bradley Infants School	1 - Brimington Junior School	0	4178
Brimington South	1 - Brimington Manor Infants and Nursery School	0	0	5950
Brockwell	0	0	1 - St Mary's Catholic Primary School	6087
Dunston	1 - Gilbert Heathcote Nursery and Infant School	1 - Cavendish Junior School	1 - Dunston Primary School	6132
Hasland	1 - Hasland Infants School	1 - Hasland Junior School	0	5916
Hollingwood and Inkersall	0	0	3 - Hollingwood Primary School - Inkersall Primary	7214

			School - Duckmanton Primary School	
Holmebrook	0	1 - Old Hall Junior School	2 - Brampton Primary School - William Rhodes Primary School	4124
Linacre	0	0	0	4048
Loundsley Green	1 - Brockwell Nursery and Infant School	1 - Brockwell Junior School	1 - Holme Hall Primary School	3914
Lowgates and Woodthorpe	0	0	2 - Norbriggs Primary School - Woodthorpe CE Voluntary Controlled Primary School	4324
Middlecroft and Poolsbrook	1 - Speedwell Infant School	1 - Staveley Junior School	2 -St Joseph's Catholic Primary School -Poolsbrook Primary School	4205
Moor	0	0	1 - Newbold CE Primary School	4350
Old Whittington	0	0	1 - Mary	4129

			Swanwick Primary School	
Rother	1 - Spire Infant and Nursery School	1 - Spire Junior School	1 - Whitecotes Primary School	6128
St Helens	0	0	3 - Highfield Hall Primary School - Christchurch Primary School - Abercrombie Community Primary School	4126
St Leonards	0	0	1 - Hady Primary School	6239
Walton	0	0	0	5971
West	1 - Westfield Infant School	0	0	6036
TOTAL	8	7	21	98,845

Appendix C: Unemployment rates by Ward (August 2008)

