

# Budget conversation

November / December 2023

## Have your say and help shape the future of local council services



**CHESTERFIELD**  
BOROUGH COUNCIL

[www.chesterfield.gov.uk/budget-conversation](http://www.chesterfield.gov.uk/budget-conversation)

# Foreword

**Like local authorities across the country, Chesterfield Borough Council is facing extreme pressures on our budgets, due to a variety of factors outside of our control.**

Not only are we feeling the impact of exceptionally high inflation rates, the cost-of-living crisis means people need our services now more than ever, the income we receive from things like our venues is falling, and we're still bearing the long-term financial impacts of the pandemic.

This is compounded by historic and piecemeal Government underfunding of local councils – the money we receive has more than halved since 2010.

All this means we're facing budget gaps stretching into millions, with a forecast shortfall of £4 million in 2024/25, and rising further in future years.

While this isn't a national economic crisis of our making, we must respond to it nevertheless – and must do so in a responsible and sustainable way.

Traditionally, Chesterfield Borough Council has provided more services and support than many other district and borough councils. We're proud of this, and the impact it's had – but in light of the serious financial challenges facing us, regrettably we won't be able to sustain this level of service in the future.

We've already made significant savings over the last 18 months and are firmly focussed on running our services as efficiently as we can.

But much more must be done, and some difficult choices lie ahead. Some services will need to stop, and many we will have to deliver differently – but we remain committed to doing all we can to protect the essential services that local people rely on.

## Have your say in our Budget Conversation

**“It's important that we're open and honest with our communities, and that we put your views at the heart of our decision-making over the coming years”**



It's important that we're open and honest with our communities, and that we put your views at the heart of our decision-making over the coming years.

Our Budget Conversation is the start of that long-term conversation with our communities.

We're asking you to take part in a short survey and answer a series of broad questions about where and how you think we could prioritise making budget savings and should focus our spending.

It will only take a few minutes to complete, and your views will help shape our services in the future.

You may have also seen information about some specific service proposals which we're developing in the shorter-term – for example, the introduction of charging for green waste collections or changes to the way we use some of our public buildings.

Many of these will need further engagement and / or consultation with our communities before any final decision can be made, and this will run in addition to the questions we're asking in our Budget Conversation.

Before you take part in the survey, you may find it helpful to read through the background information included in this brochure.

### **Councillor Amanda Serjeant**

Deputy leader of Chesterfield Borough Council and cabinet member for finance and asset management



## About Chesterfield Borough Council services

Everything we do is guided by our vision: **to put our communities first** – and to achieve our three priorities of:

**Making Chesterfield a thriving borough**

**Improving quality of life for local people**

**Building a resilient council**

The services we deliver cover a whole range of functions and facilities that people use and rely on throughout the course of their whole lives – including waste collection and recycling, street cleaning, leisure and park facilities, housing, environmental protection including dealing with fly tipping, planning, regeneration, markets and theatres to name but a few.

**Chesterfield Borough Council provides more than 50 services to almost 105,000 residents and tenants, plus businesses and visitors.**

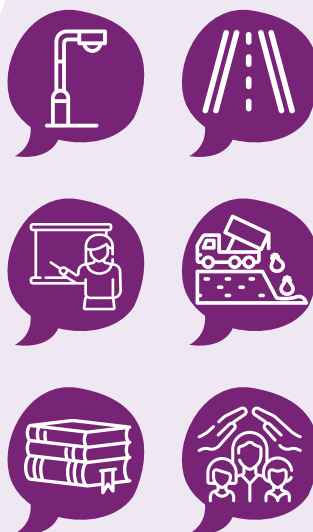


**When you're thinking about our services, and what you think Chesterfield Borough Council should prioritise, it's important to note that we're not in control of all the public services you receive.**

Derbyshire County Council is also the Lead Local Flood Authority in this area, working with partners to manage local flood risk such as groundwater flooding, surface water run-off and ordinary watercourses.

Many are delivered through our partners including Derbyshire County Council, local health and emergency services and community / voluntary organisations.

For example, the services below are provided by Derbyshire County Council:



**Roads and pavements, including pothole repairs, streetlights and gritting**

**Household waste recycling centres (including the facility at Stonegravels)**

**Social services – for children, young people and adults**

**Schools**

**Libraries**

**Trading standards**

**Fostering and adoption services**

# Our budgets – at a glance

The income we receive comes from a variety of sources and is used to pay for the services we deliver to communities across the borough.

Part of our income comes from Government, but the amount of money we receive has significantly decreased over time.

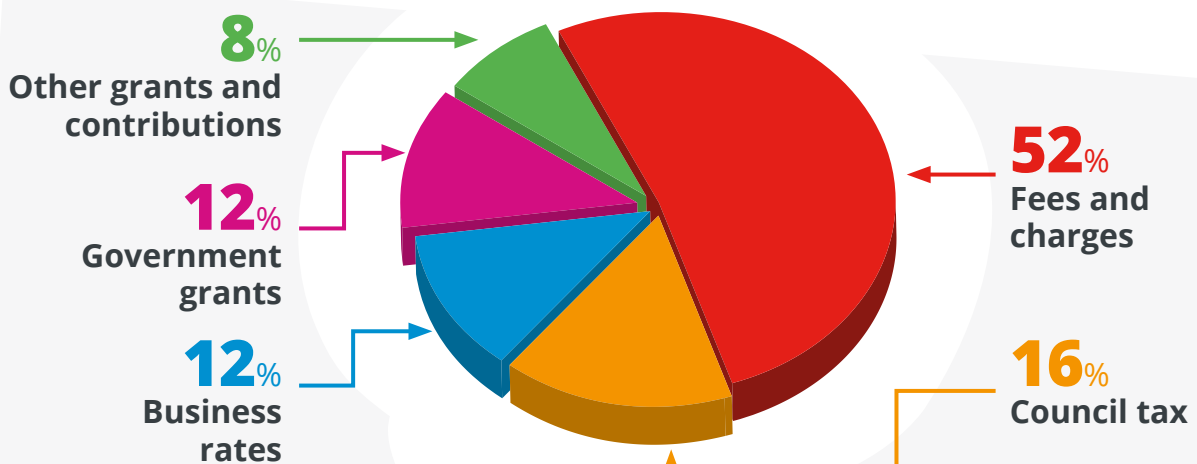
The way councils are funded by central Government is complex and has changed

over recent years – meaning straightforward comparisons over time are difficult.

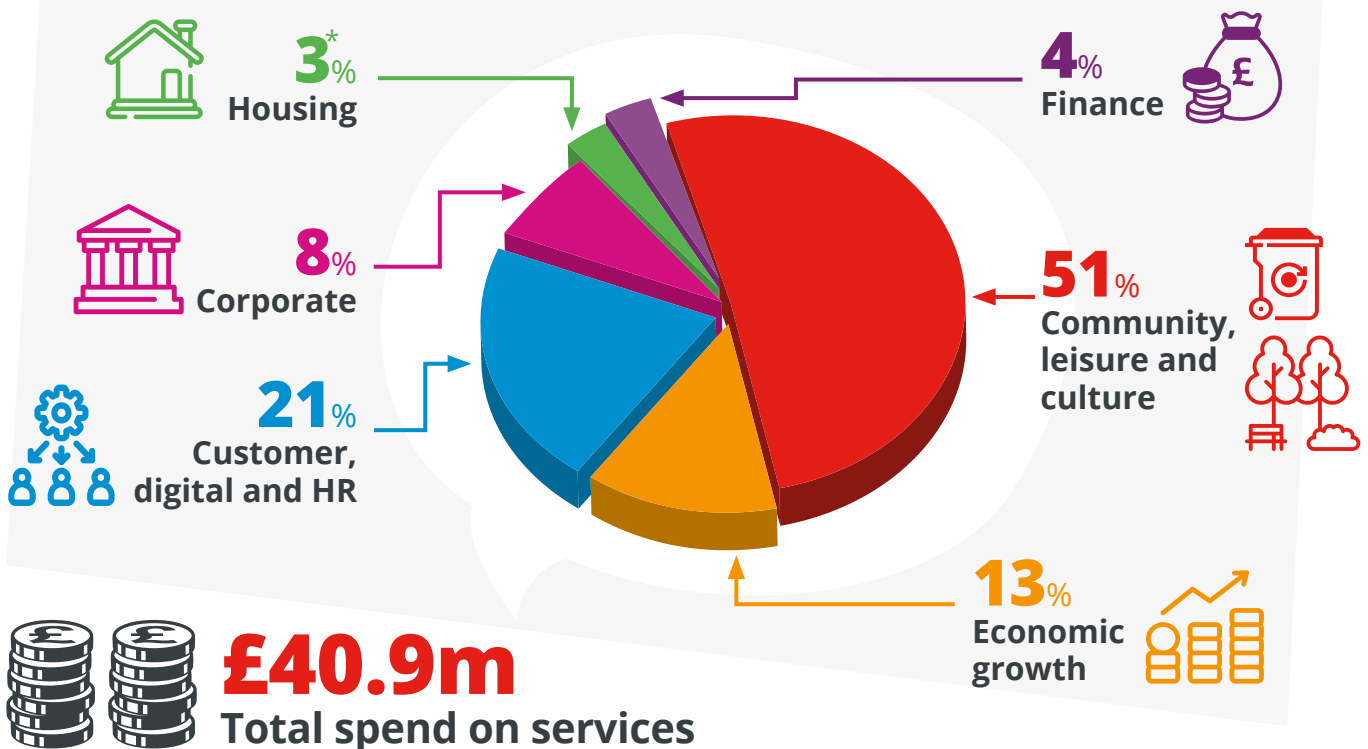
However, in broad terms the amount of funding we receive from Government has almost halved between 2010 and today.

In 2023/24, funding from Government made up just 12% of our total income – with other sources shown in the chart below:

## How we are funded



## How we spend our money, by service



Percentage figures have been rounded to the nearest whole number

\*This is not the total amount we spend on housing services, just the amount spent from the council's General Fund. Other housing costs come from the council's separate Housing Revenue Account (HRA)

# Our services

The table below shows some of the services which are provided in each of the departments listed on the pie chart on page four.

## Community, leisure and culture



Services include waste and recycling, street cleaning, parks and green spaces, leisure facilities, theatres and cultural venues, town centres, markets, environmental health and community safety

## Economic growth



Services include economic development and business support, regeneration projects, planning, property and technical services

## Customer, digital and HR



Services include customer services and contact centre, revenues and benefits, ICT and digital services

## Corporate



Services include climate change, policy and partnerships, elections, legal, democratic and civic services, communications, and health and safety

## Housing



Services relating to homelessness and private sector rented properties. Other housing spend comes from our Housing Revenue Account (HRA) which is a separate bank account to the council's General Fund, and is not shown in the pie chart on page four

## Finance



Financial services and procurement



## Securing extra funding for our communities

We have a strong track record of making the most of opportunities to pull in extra funding to our borough – to help fund large-scale projects such as our Revitalising the Heart of Chesterfield town centre regeneration scheme, Staveley Town Deal regeneration projects, and the refurbishment of Chesterfield Museum and the Pomegranate Theatre.

**£25.2m\***

### Towns Fund

(\*Plus £500,000 of 'accelerator' funding)

This money is being used to regenerate Staveley town centre, and fund other projects as part of the Staveley Town Deal

**£19.9m**

### Levelling Up Fund

This money is being used to regenerate Chesterfield town centre, and provide funding towards the refurbishment of the Pomegranate Theatre and Chesterfield Museum

**£2.69m**

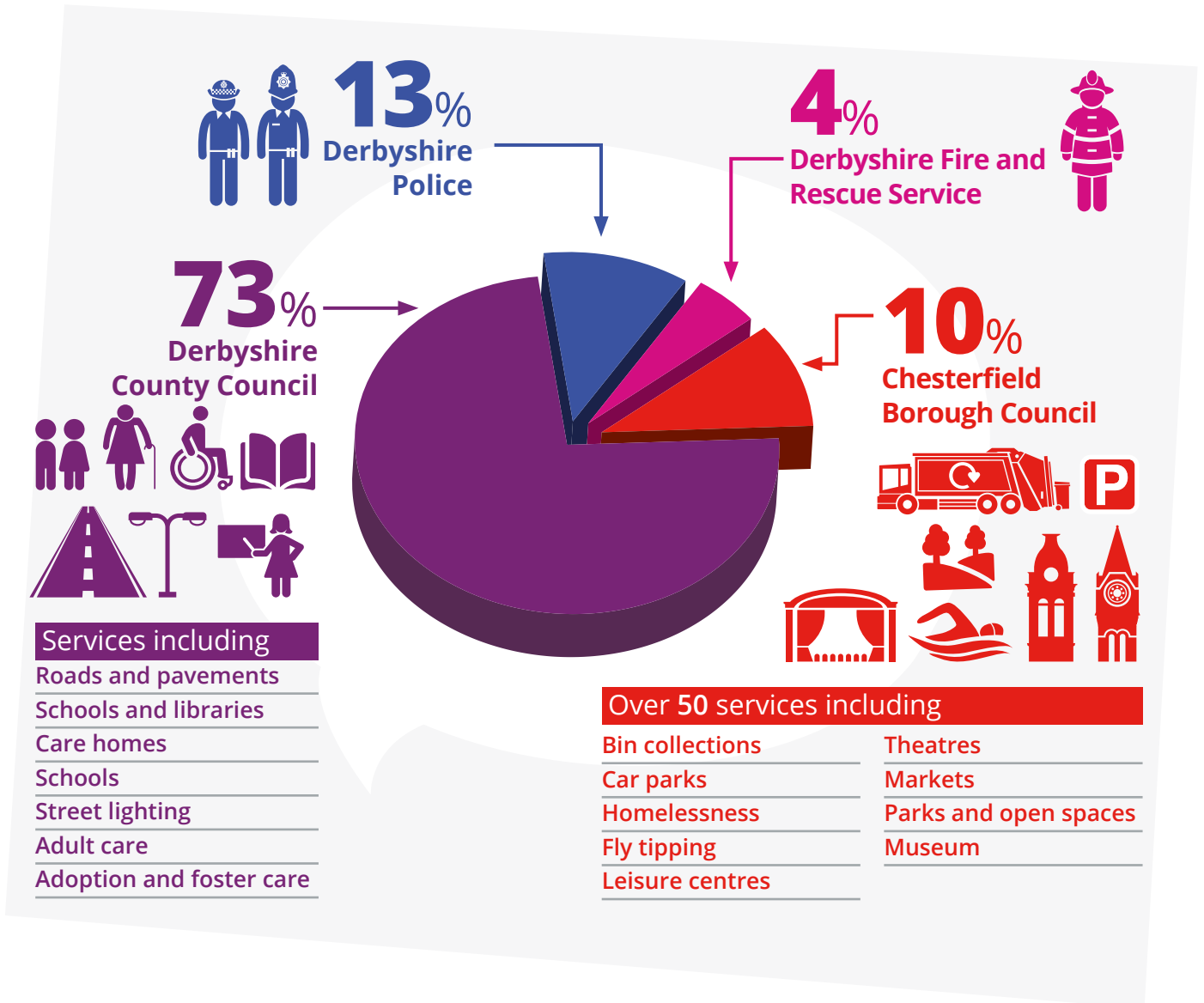
### UK Shared Prosperity Fund

This money is being used to fund a range of grassroots projects, to help communities across the borough

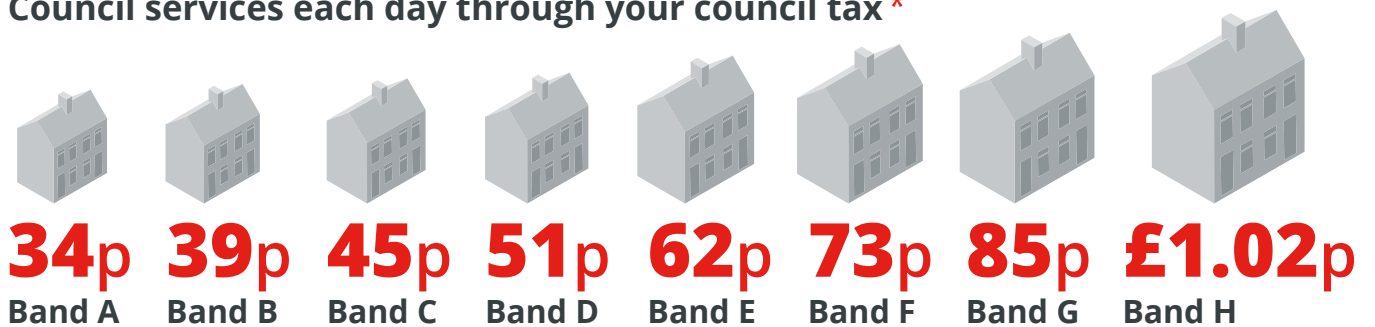
# Council tax

Chesterfield Borough Council collects council tax on behalf of a number of local organisations.

But did you know that only around 10% of your bill goes towards the cost of providing the services you receive from us?



What each household pays towards Chesterfield Borough Council services each day through your council tax \*



\*The majority of households in Chesterfield are in Band A.

# Council Tax 2024/25

Chesterfield Borough Council has not finalised any proposals in relation to council tax next year (2024/25). This will be done as part of our budget-setting process in February 2024 and we will share more information in due course.

## Business rates

Central Government sets the level of business rates that businesses in the borough pay. Chesterfield Borough Council collects this money, but we have no influence on the amount that is charged.

# Budget conversation

## About the Budget Conversation

The Budget Conversation is the start of a long-term conversation with our communities.

We're asking you to take part in a short survey and answer a series of broad questions about where and how you think we could prioritise making budget savings, and should focus our spending.

### How to take part

The survey is available online at [www.chesterfield.gov.uk/budget-consultation](http://www.chesterfield.gov.uk/budget-consultation)

Printed copies will also be available at council venues, including the Town Hall reception, Queen's Park Sports Centre, and the Healthy Living Centre in Staveley. Copies will also be available from the Brimington Parish Council offices.

If you would like a copy of the survey in an alternative format please contact:

[policyteam@chesterfield.gov.uk](mailto:policyteam@chesterfield.gov.uk)

It will close on **Friday 15 December 2023**, and the results of the survey will help us shape where we spend our budgets, now and in future years.



# Budget conversation

## Keep in touch

Our Budget Conversation is the start of a long-term conversation with our communities.

We will keep you up to date – and provide different ways for you to have your say – as we work to achieve the budget savings we need to make now and in future years.

At the end of the Budget Conversation survey you can add your details if you would like to be kept informed of future engagement and consultations about our services.

## You can also:

Sign up for the latest news, via My Chesterfield:

[www.chesterfield.gov.uk/my-chesterfield](http://www.chesterfield.gov.uk/my-chesterfield)

Follow us on social media - search for **Chesterfield Borough Council** on Facebook, X (formerly Twitter), LinkedIn, YouTube and Instagram.

