

The story so far...

Have your say on town centre regeneration plans

We're investing in our town centre to make sure it thrives for generations to come.

The £10.28m Revitalising the Heart of Chesterfield scheme will transform the look, feel and flow of the town centre – creating a contemporary market built on our proud history and heritage.

We want to hear your views on our plans, as part of a public consultation running from 24 May to 8 July 2022.

What's happening?

This exhibition sets out some of the key proposals – and you can also see the full draft designs online at: www.chesterfield.gov.uk/revitalise and paper copies are available in the exhibition room.

We're focusing on the key areas of Rykneld Square, Spire Walk, Corporation Street, Burlington Street, Market Square and New Square.

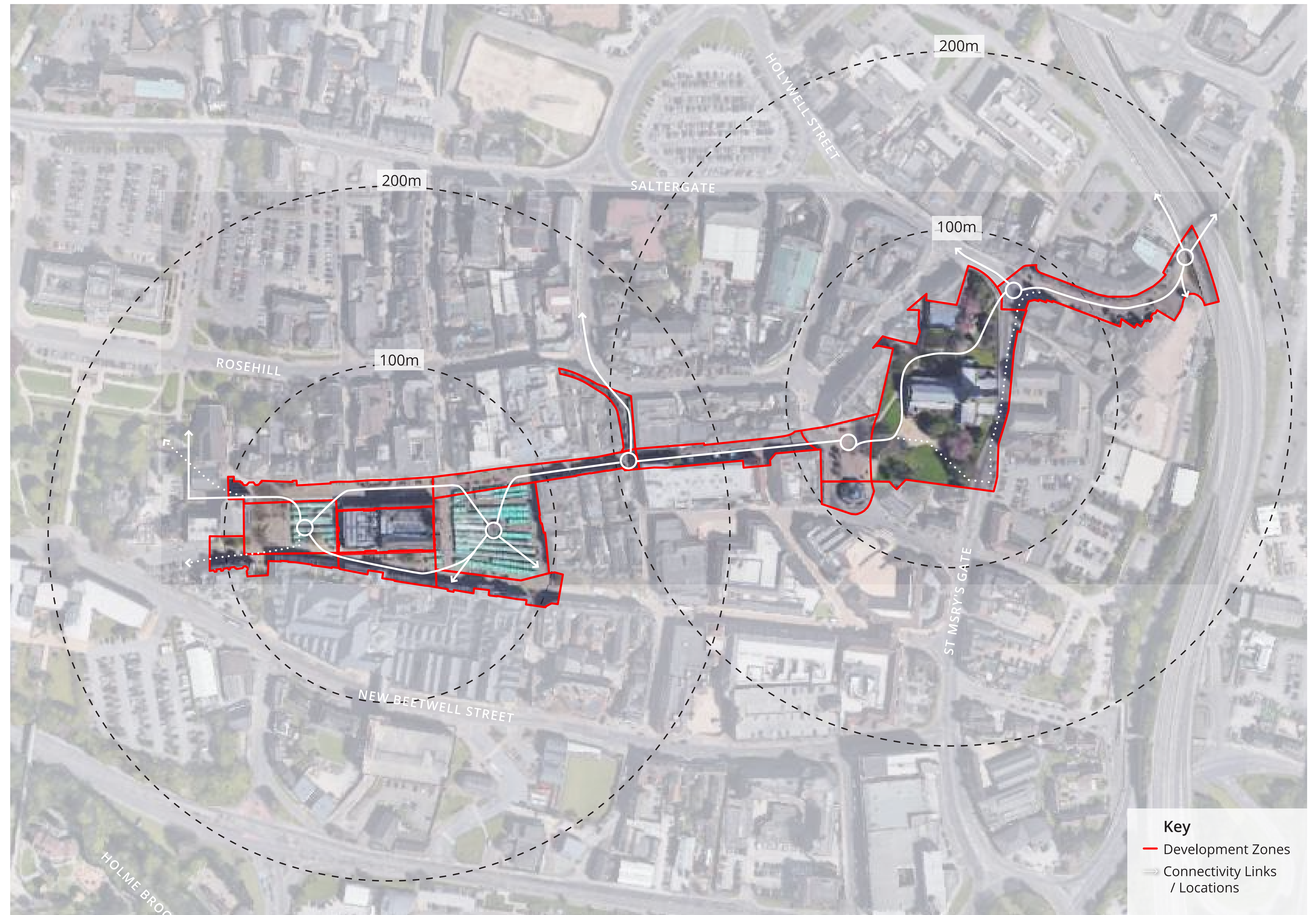
The work will be carried out in phases – starting later this year and due for completion in 2025.

The Proposals

Proposals include:

- Significant improvements to Chesterfield's historic market grounds.
- Re-imagined town centre spaces that can be used for attractions like markets, festivals, events and cultural celebrations.
- Upgrades to Rykneld Square to help frame the iconic Crooked Spire as a key attraction.
- More greenery, new paving, seating, lighting, signposting and street furniture to create better-looking and better-connected spaces.
- Improved lighting and digital connectivity.

Together with the major refurbishment of Stephenson Memorial Hall on Corporation Street, the project is being brought forward thanks to almost £20m which Chesterfield Borough Council secured from the Government's levelling up fund.



Historic view of St Mary and All Saints Church



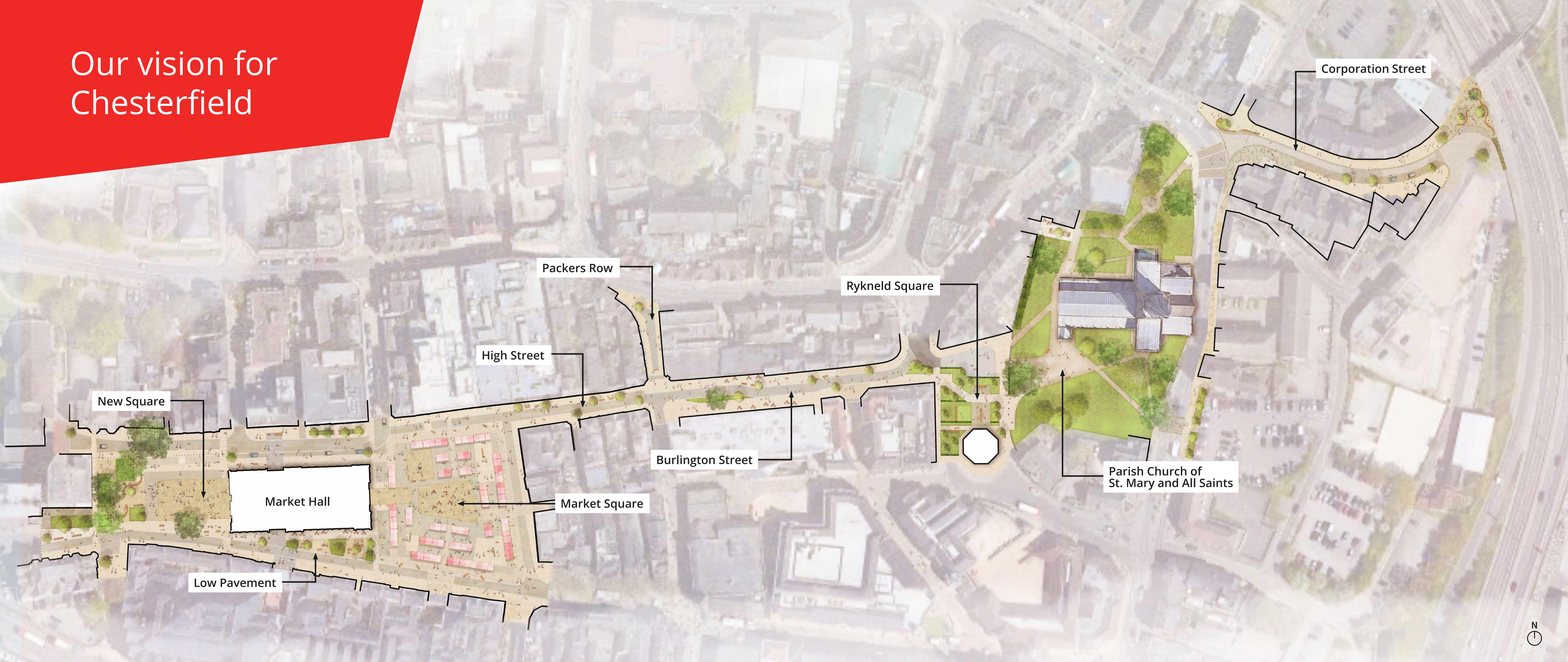
1928 Market aerial view

How can I get involved?

Please read through the information in this exhibition. At the end, you will find details of how to put forward your views on our latest plans.



Our vision for Chesterfield



Our vision is to create an attractive, contemporary market town that celebrates our proud history and heritage. We want Chesterfield to be a go-to destination where people shop and spend their leisure time

Bring new life to the Town Centre



We will create an attractive environment which encourages an outdoor 'café culture' to bring new life to the town centre .

Create more social space



We will create a new variety of seating, considerably placed, to suit all visitors and encourage people to dwell and relax in the town centre.

Improve signposting



We will enhance existing signage to create a town centre that is easy to navigate, with a focus on key attractions.

Enhance safety



We will use innovative design which contributes to a safe and secure town centre.

Create a greener Town Centre



We will plant more street trees and greenery to create an attractive environment, help mitigate the effects of climate change and increase town centre biodiversity.

Celebrating identity and embrace heritage



We will celebrate the identity of Chesterfield by enhancing our historic market, and the setting of the Parish Church of St Mary and All Saints (Crooked Spire) and the town's cultural / heritage attractions.

Introduce playful design elements



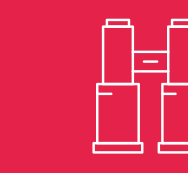
We will incorporate playful elements within the design to encourage children and adults alike to play and interact - adding new enjoyment to the town centre.

Create more event space



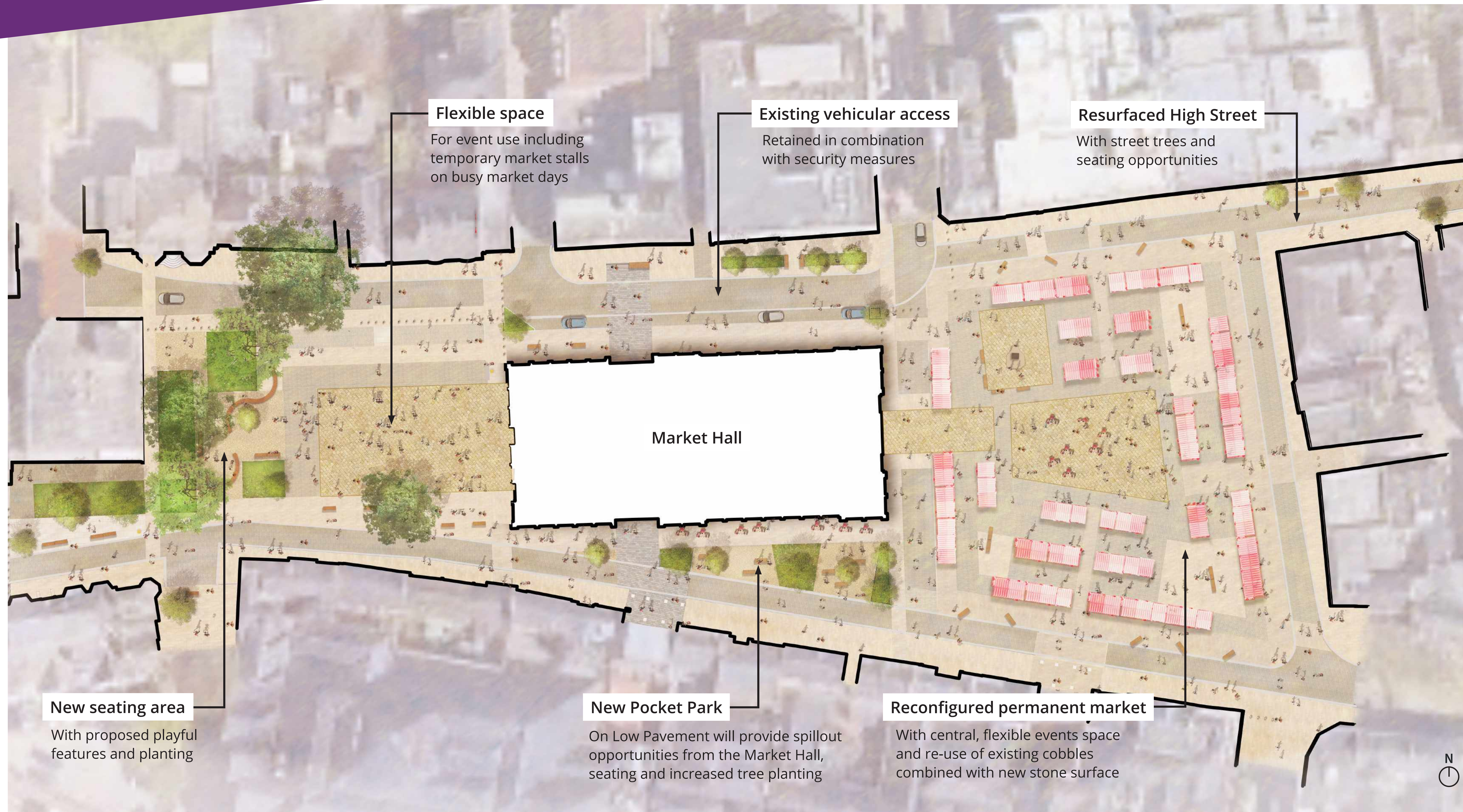
We will re-imagine key public spaces to create a flexible town centre that can host a wide range of attractions like markets, festivals, events, cultural celebrations and community gatherings throughout the year.

Frame landmark views



Maintain clear views to historic wayfinding landmarks such as, Church of St Mary and All Saints, and Chesterfield Market Hall.

New Square and Market Place



A multi-million pound investment will revitalise our historic market grounds. Our vision is to create a modern, vibrant town centre experience with additional space alongside our traditional markets to host outdoor events, speciality markets and entertainment.

We will take a sympathetic approach which builds on our proud history and heritage while improving the quality of the public realm.

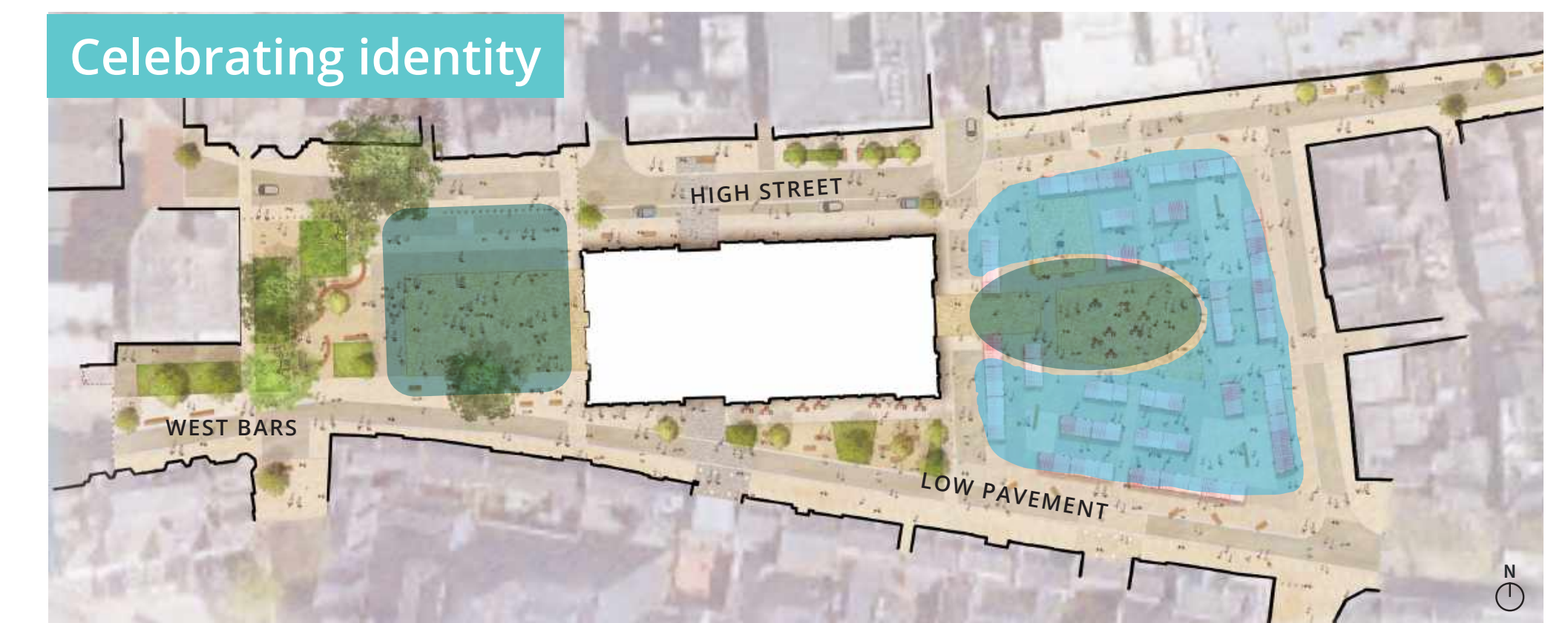
Proposals for this area – which is made up of three key spaces - Market Square, New Square and a new pocket park on Low Pavement - have been drawn up in consultation with local traders.

Chesterfield's Market Square and New Square currently host a similar array of market stalls, many of which are underused. The redistribution of permanent and temporary stalls - focusing the permanent market within Market Square, and temporary stalls in New Square - will make the space more flexible and allow other events to happen and provide more reasons for people to visit Chesterfield.

The pocket park will provide valuable seating, surrounded by new planting, and shelter to the market stalls.

The existing surface materials (stone flags and cobbles) are high quality, durable and reflect the history of the town. The ambition is to repurpose and reuse these materials where possible, addressing accessibility issues, and delivering a sustainable solution to paving. An injection of new stone will enliven the existing materials and redefine the key spaces, supplemented with carefully positioned tree planting and street furniture.

The town centre is predominately hard paved with a limited number of mature trees. We will plant more trees to create an attractive environment, encourage people to dwell in the town centre, and improve biodiversity.



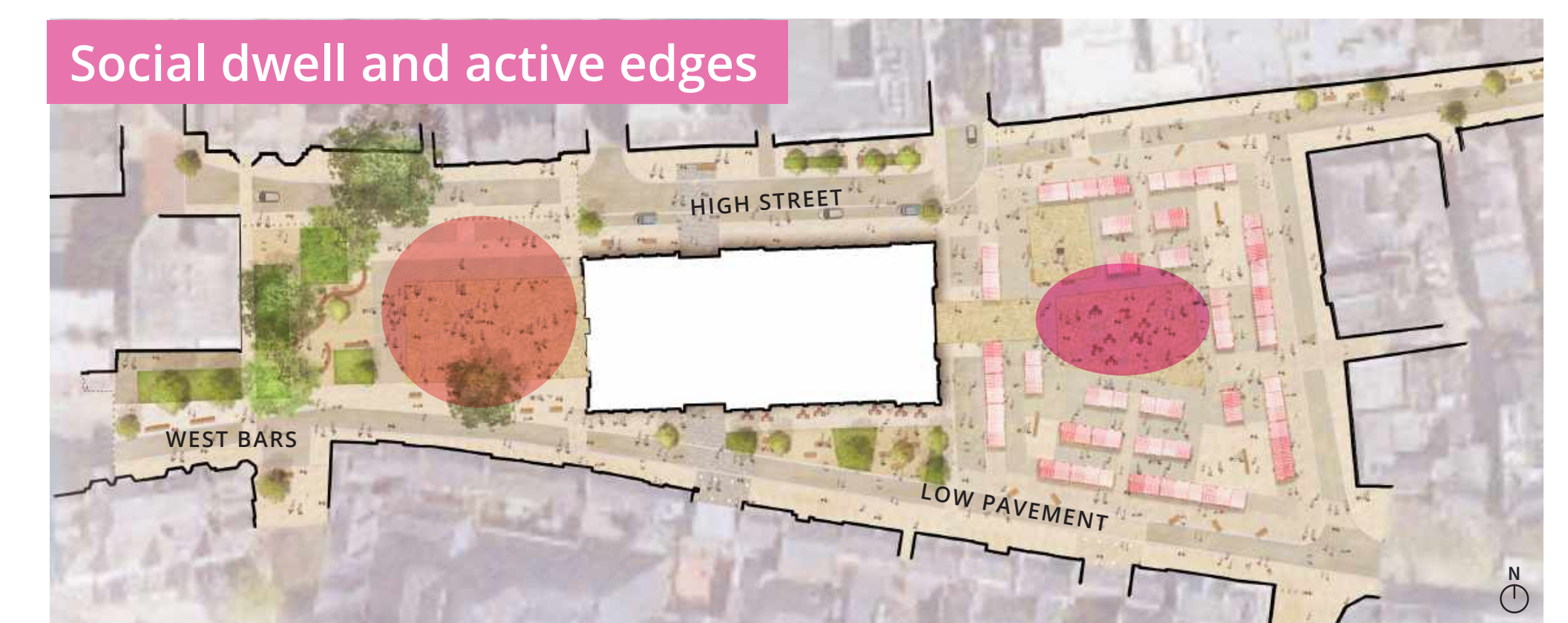
Key
 Flexible open hard space allows for temporary market stalls, drive on facilities and events
 Permanent stalls retained for day to day traditional market use



Key
 Existing trees
 Proposed street trees
 Potential for ornamental planting below trees



Key
 Potential active edge
 Potential 'playful' furniture element
 Seating locations



Key
 New Square - music and children's events as well as temporary installations and markets
 Market Square - flexible market space for seasonal and specialist stalls and temporary seating

Bringing our historic market grounds alive

Market Square will remain home to Chesterfield's permanent market with New Square providing temporary stalls on busy market days. Market Square includes a central space that can be used for smaller events to support the market use. New Square will include a large flexible space for seasonal events, markets and moments of celebration.



Market Square Potential Events



Temporary Marquee



Chesterfield by the Sea



Temporary Market Stalls

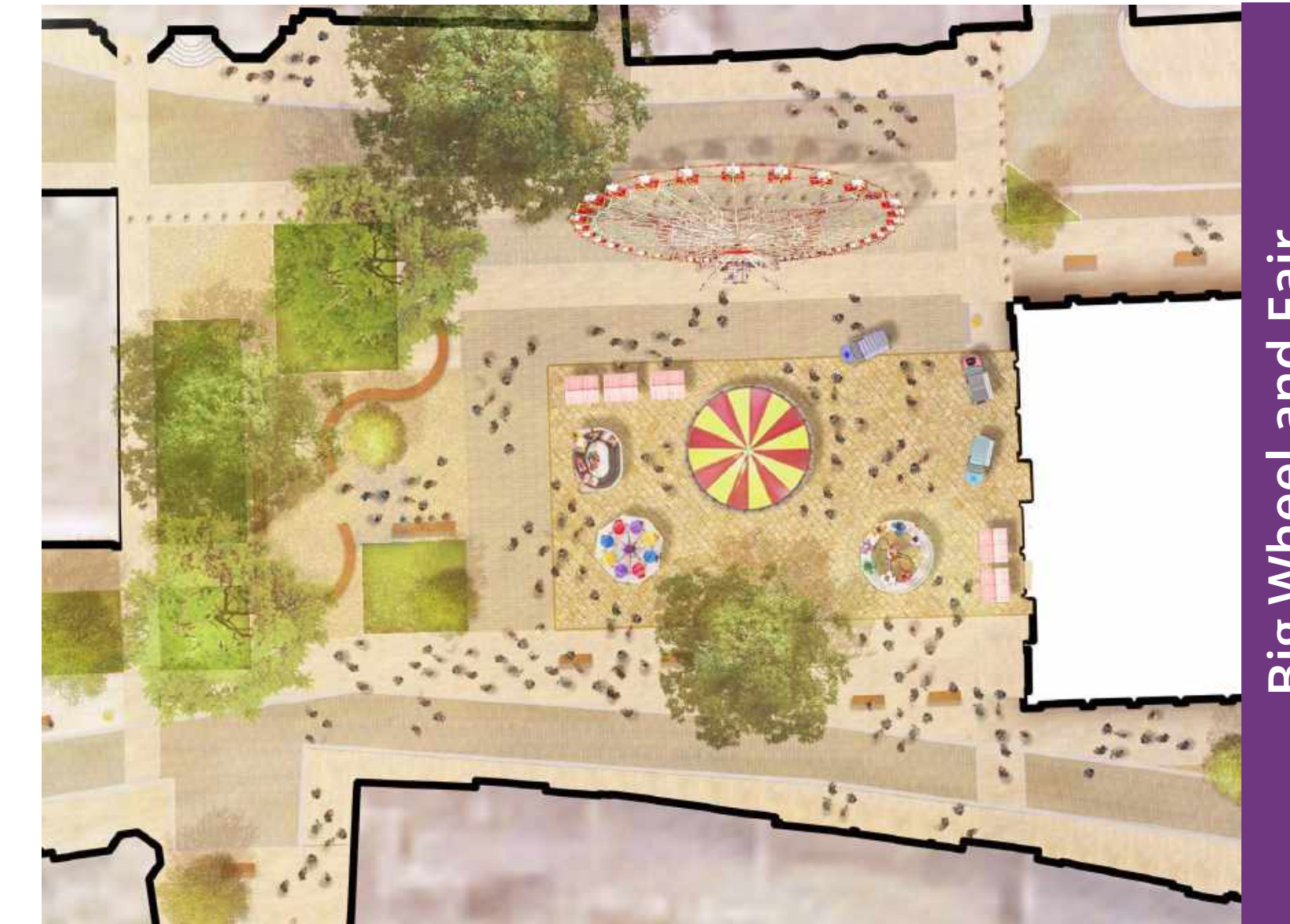


Food Market

New Square Potential Events



Cinema Night



Big Wheel and Fair



Music Event



Christmas Lights Switch-on

Our plans will create a modern, vibrant town centre experience with additional space alongside our traditional markets – providing more flexibility to host outdoor events, speciality markets and create unique experiences.



Rykneld Square, Parish Church and connected streets



Street trees linking two spaces



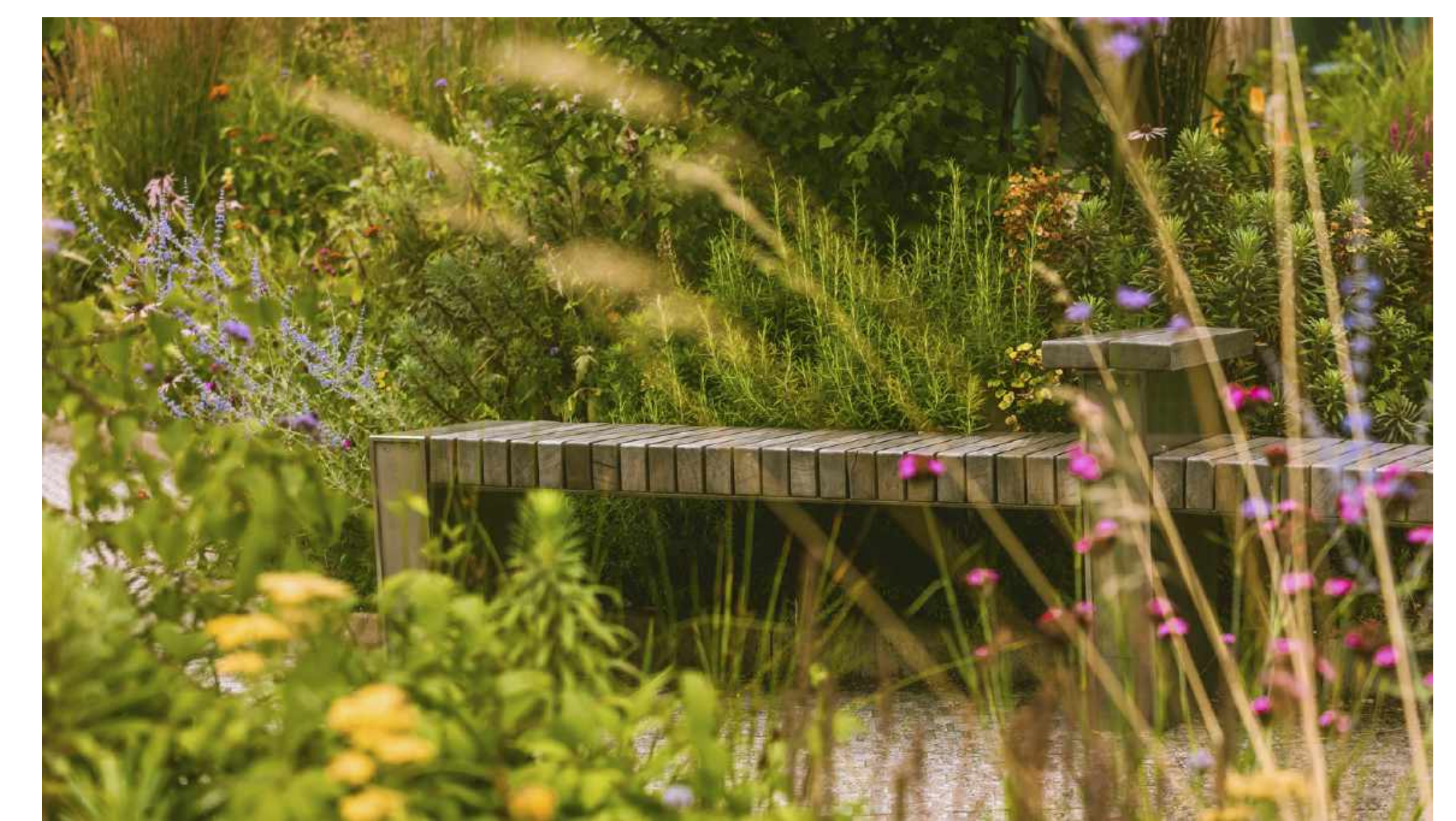
Clutter free pedestrian routes



Seasonal, pollinator friendly bulbs



Social, linear seating along routes



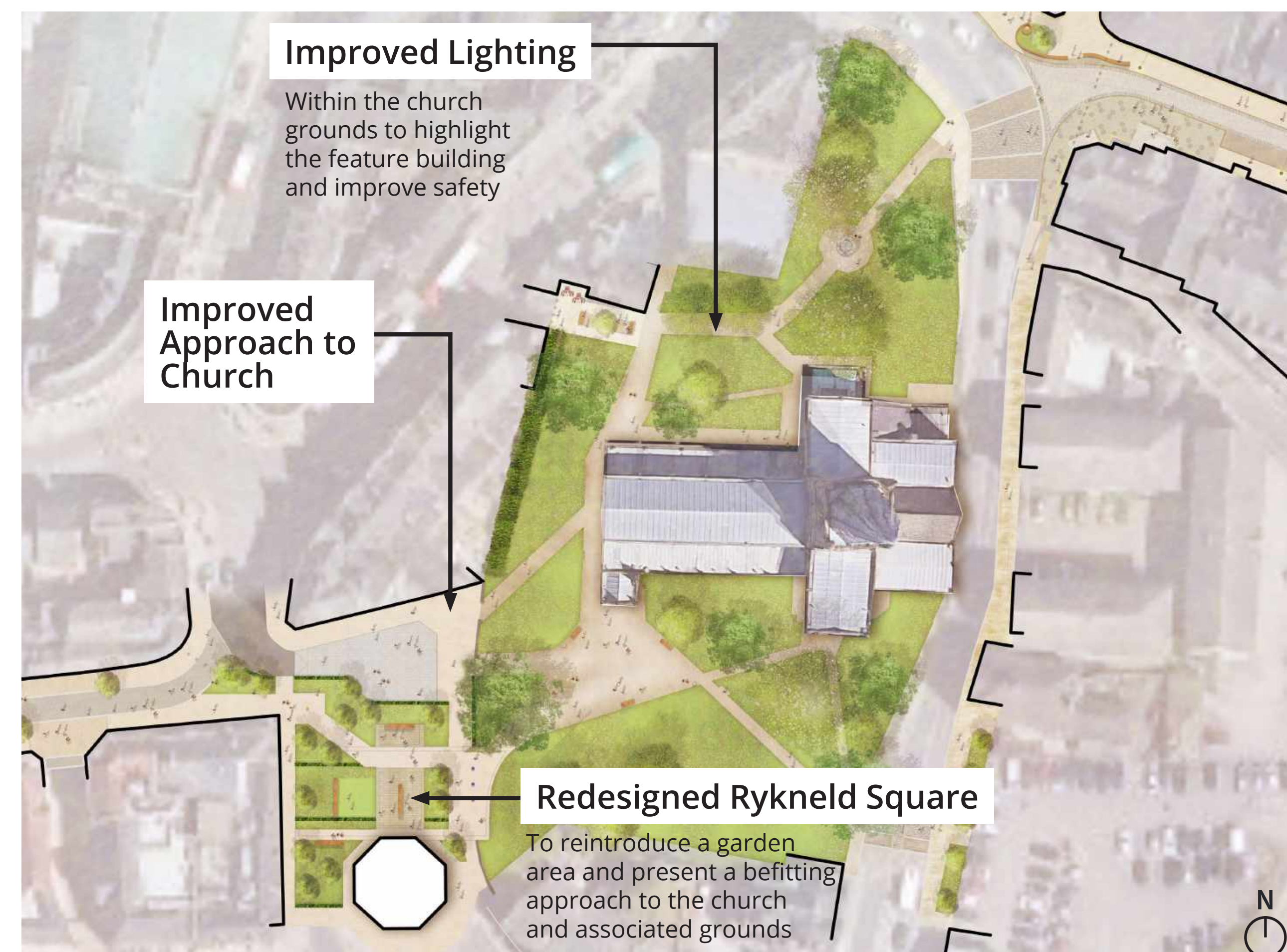
Planting with texture, seasonal variety and pollinator friendly

We want to make better use of Rykneld Square as an open public space – to better connect the town centre and Crooked Spire and improve the feel and flow of this area.

The square is currently an under-used and predominantly hard space, located immediately next to the Grade 1 listed Parish Church of St Mary and All Saints. The square has potential to create a much more welcoming arrival and viewing point for the town's iconic church. To establish a warm welcome to both the church and the town centre, Rykneld Square has been re-imagined, to create a new green area, inspired by the gardens that once occupied this space.

The new-look square aims to improve connectivity with the church and its grounds by encouraging pedestrians to move through the square to the main church entrance. The square presents a unique opportunity in the town centre to create a new garden space where tree planting will create dappled shade, hedging will create enclosure and ground cover planting will deliver a range of colours and scents. All elements come together to create an attractive, restful and welcoming space for visitors to enjoy.

The church grounds themselves will have a much-improved connection with the square. It is envisaged that the church environment will be improved through the introduction of a renewed lighting scheme, tree works, and planting. Footpath routes around the church, particularly onto St Mary's Gate, will be repaired to improve both the route and access.



Please note: Designs are early-stage concepts that will need further work to fully resolve transport and highways aspects prior to implementation being possible.



CHESTERFIELD
BOROUGH COUNCIL

Revitalising the
Heart of Chesterfield



Corporation Street

Corporation Street is a key gateway to the town centre when arriving from the train station – welcoming visitors and residents alike. Corporation Street provides a key pedestrian route from the station to the Parish Church and the town centre beyond.

We are considering options to adjust the balance of pedestrian and vehicle use to improve the environment for pedestrians, whilst balancing the need for vehicles to access the area. There are currently two options being explored:

Changing to a one-way street that permits essential access whilst reducing the road width and widening the pavements.

Closing a section of road between St Mary's Gate and Station Street to all but essential vehicles. This would create a fully pedestrianised street that would meet the needs of the current uses of this street, whilst delivering an attractive welcome to Chesterfield.

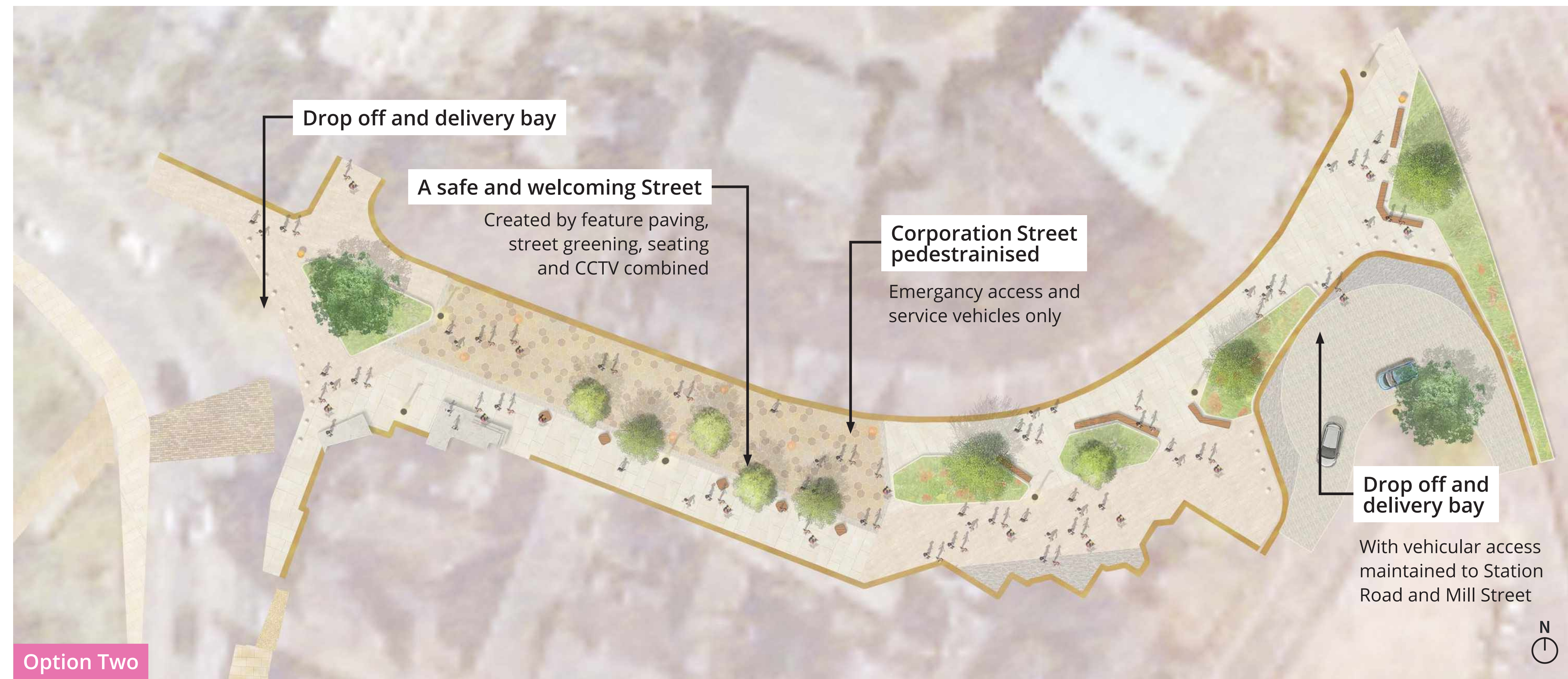


Option One

Reduction to a one-way street

Rebalancing the street will place greater emphasis on the pedestrian experience and support the adjacent uses.

Please note: Designs are early-stage concepts that will need further work to fully resolve transport and highways aspects prior to implementation being possible.



Option Two

Partial road closure

Removing traffic from Corporation Street enables the creation of a new piece of gateway public realm and a warm welcome to visitors.

Please note: Designs are early-stage concepts that will need further work to fully resolve transport and highways aspects prior to implementation being possible.



Street trees along pedestrianised routes



Playful lighting design at night



References to the Pomegranate Theatre & Cinema



Use of materials consistent with the wider town centre



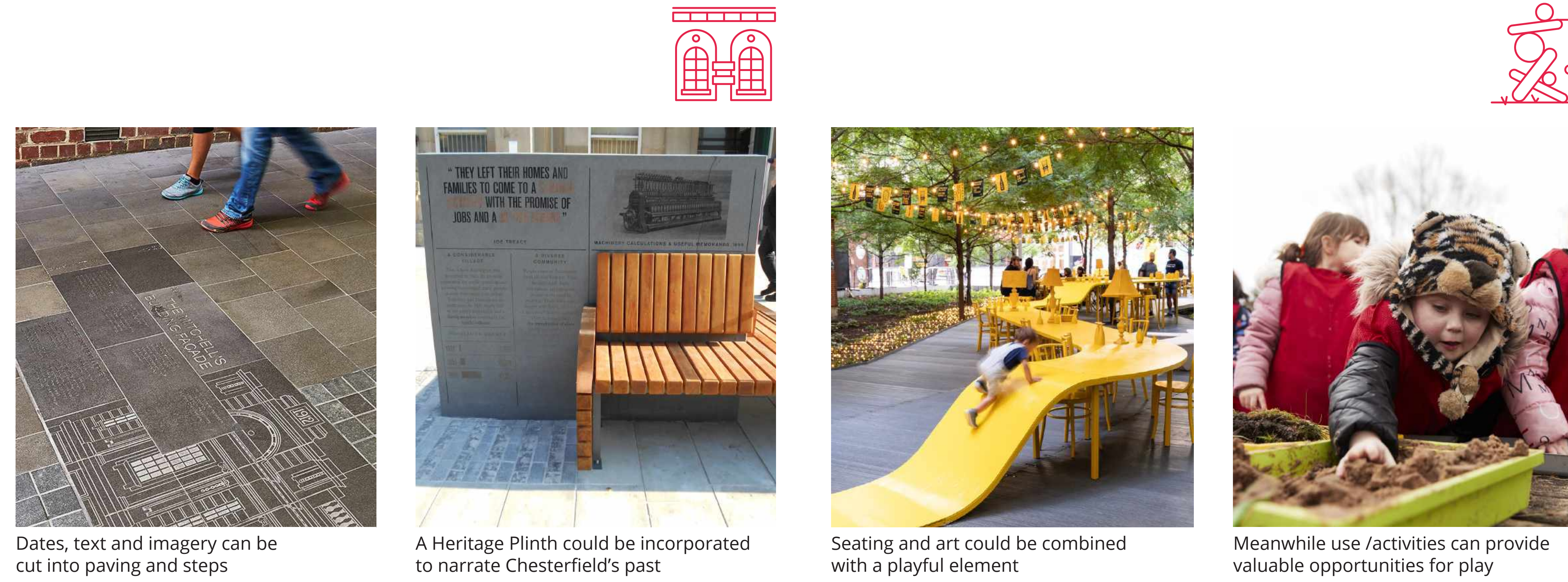
Historic **Stephenson Memorial Hall** – home to the Pomegranate Theatre and Chesterfield Museum – dominates the Corporation Street skyline. It is being transformed as part of a £17m refurbishment, and improvements on Corporation Street will create a warm welcome for visitors. Find out more about this project at

www.chesterfield.gov.uk/revitalise



Improving the look, feel and flow of the town centre

We want to create better-connected, better-looking public spaces that build on our proud history and heritage and provide a sense of consistency across the town centre. To achieve this, some key principles underpin our vision across the regeneration area:



Dates, text and imagery can be cut into paving and steps

A Heritage Plinth could be incorporated to narrate Chesterfield's past

Seating and art could be combined with a playful element

Meanwhile use /activities can provide valuable opportunities for play

Potential for more stylised totems in fitting with new furniture

Signage as an education tool

Embrace heritage

Chesterfield's heritage is rich and diverse with many listed buildings and structures, the vision aims to celebrate this heritage through materials, furniture and wayfinding.

The town has had a market since 1156 with the current market hall dating to 1857. Within the market site itself there are several Grade II listed buildings located to Low Pavement and the Market Hall. Some of the traditionally styled lamps are also Grade II listed.

The Water Pump which sits at the northwest corner of Market Square is grade II* listed, with inscriptions from 1776 and 1826. This pump is a key feature of Chesterfield's outdoor market, formally a focal point for public celebration and debate. The delivery of the vision will re-establish the pump as a focal feature of Market Square.

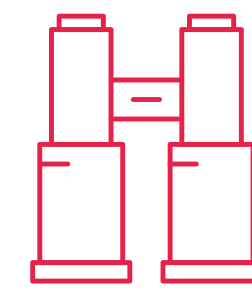
Encourage play

The vision aims to encourage playful activities throughout the town centre via both permanent and temporary informal play elements. Aiming to create an environment that encourages children and adults alike to play and interact.

The playful elements are not intended to be prescriptive play, but elements that incorporate the potential for play whilst also providing alternative uses.

Wayfinding and signage

Effective and attractive signage is essential to create a legible network of spaces and to allow the effective movement through the town centre. Functional and sculptural signage will be implemented throughout the masterplan area, with opportunities to incorporate heritage items and lighting.



Chesterfield Market Hall's historic facade



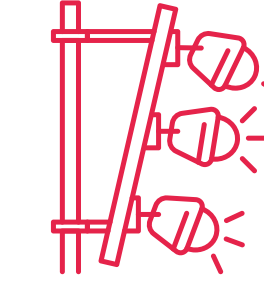
Church of St Mary and All Saints 'crooked spire'



New lighting will highlight the market hall



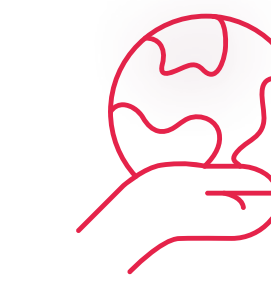
Existing Church architectural lighting adds interest but could be improved



Tree canopies providing shade and cooling the area



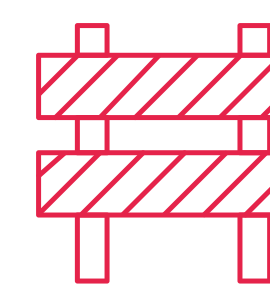
Covered market stalls protecting against all weather



Large planters containing trees



Bollards concealed in hedging



Landmark views

The proposals celebrate the historic views of the Church of St Mary and All Saints and Chesterfield Market Hall. These buildings act as important wayfinding markers for those making their way through the town centre. Improved lighting will further celebrate these iconic buildings and add a vibrant dynamic to Chesterfield during the darker hours.

Lighting and digital connectivity

Lighting and digital connectivity
Attractive lighting and new digital facilities will feature across the regeneration sites - creating a more attractive, better connected and safe town centre for everyone to enjoy.

These are being commissioned separately but will in principle our aim is to:

- Use lighting to create character, ambience and focus in key areas while creating an environment which feels safe and secure, and deters anti-social behaviour
- Increase the digital connectivity in the town centre, supporting the 5G roll out, and to help us better understand and respond to how people use the town centre

Sustainability and climate change

Under Chesterfield Borough Council's Climate Change Action Plan, we aim to be a carbon neutral borough by 2050.

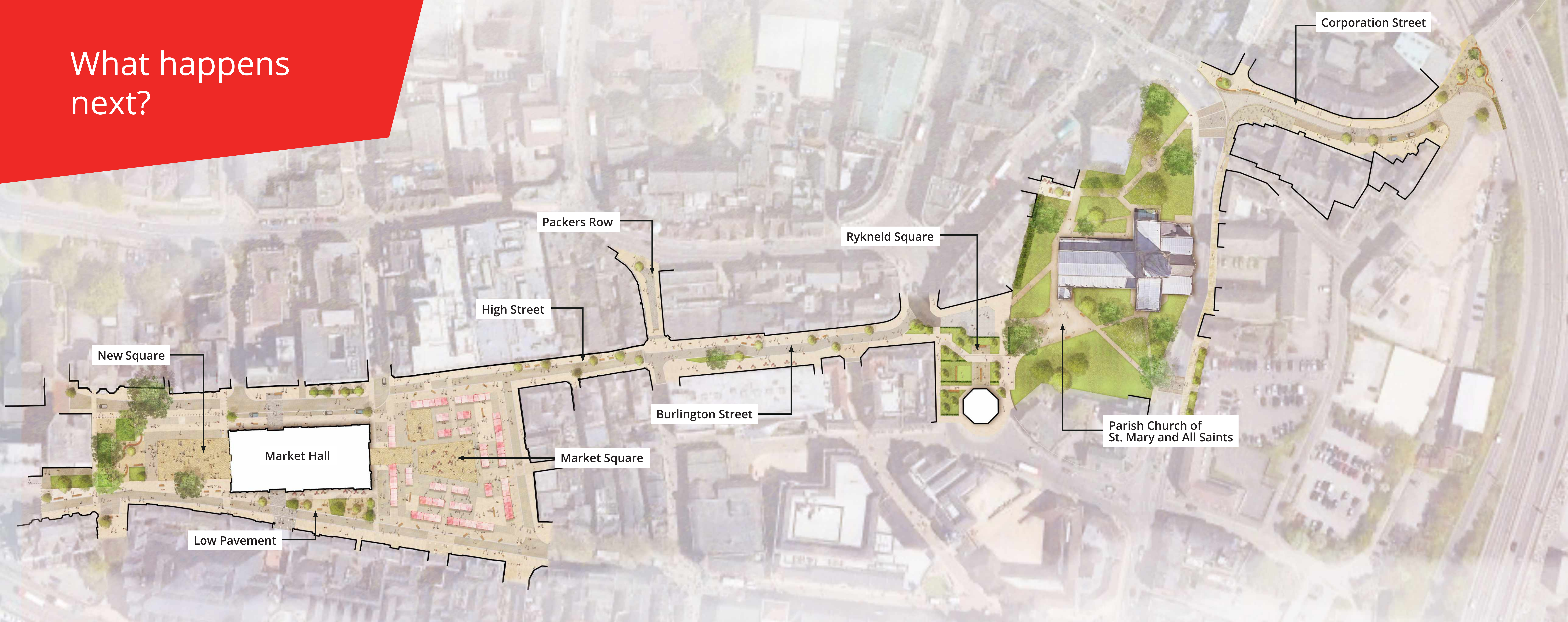
Embedding green principles into the future of our town centre will support this, and the following proposals can be found within these initial concept designs:

- Control of traffic to reduce pollution levels.
 - Lighting that considers ecological impacts as well power efficiency
 - The re-use of existing materials
 - Increase in town centre planting and biodiversity including street trees for shading and carbon absorption
 - Natural drainage systems
 - Further canopies over stalls to provide shade and shelter
- Climate change and sustainability will be key considerations throughout the ongoing development and delivery of the Revitalising the Heart of Chesterfield Master Plan.

A safe space

It is essential that the town centre improvements create a safe and inviting place for residents and visitors. The proposals include a range of measures including CCTV, bollards, street furniture and planting to ensure that the town centre is kept as safe as possible.

What happens next?



Your views are important to us

We hope you have found this exhibition useful – and remember, you can also see the full draft designs online at: www.chesterfield.gov.uk/revitalise

These town centre plans build on our existing proposals to revitalise Chesterfield Market which we consulted on last year, and we have continued to engage with local traders to shape updated designs for the market.

We're seeking further comments on our extended Revitalising the Heart of Chesterfield project, which you will have seen now go beyond improvements to just Market Square and New Square – and aim to improve the look, feel and flow of our town centre.

How can I have my say on the proposals?

Scan the QR code to the right or visit www.chesterfield.gov.uk/revitalise to fill in our online survey

Complete a paper copy and post in the ballot box in the exhibition room.

The deadline for comments is midnight on Friday 8 July 2022.

If you would like to request this information in an alternative format, please contact policyteam@chesterfield.gov.uk



Next steps →

We hope to gather views from as many people as possible to help shape the next phase of our plans.

It's important that we understand what matters to local people – and what you want from your town centre in the future – before we draw up final designs and options across these key sites in the town centre.

As plans progress, we will continue to work closely with local people and businesses.

If you would like to keep up to date with the latest project news, there is chance to enter your email address as part of the survey. The latest news will also be shared on our website at

www.chesterfield.gov.uk/revitalise

