

# Your Chesterfield

Putting our communities first



Spring into 2022! See inside for inspiration to get out and active.

Six page special: transforming our town - pages 15 to 20.



# Welcome ...

to the spring edition of Your Chesterfield



## A new year is with us and 2022 promises to be a time of great progress and opportunity for our borough.

There are positive signs that we're emerging from the pandemic, and Chesterfield is in a strong position to forge ahead as a thriving community, with a resilient local economy.

We rounded off last year with the fantastic news that our bid for almost £20 million from the Government's levelling up fund was successful – and we're wasting no time in bringing forward new plans to transform our town centre for generations to come.

The money is being used to bolster our Revitalising the Heart of Chesterfield project, with improvements planned at key sites across the town centre, including the market grounds and the area around our iconic Crooked Spire.

We're investing in the look, feel and flow of our town, while also creating space for new experiences and cultural attractions, including the refurbishment of our theatre and museum.

The work will be carried out in phases over the next four years and will complement other significant projects nearby, including the transformation of the train station area.

You can read all about what's happening, and how you can get involved and keep up to date on pages 15 to 20.

Elsewhere our multi-million pound initiative to refurbish our council homes is making good progress, with even more tenants benefiting from renovations to their homes (pages 4 and 5).

Finally, it's always rewarding to work with local people on community projects, and this edition is full of great examples.

You can read about pupils getting involved in a local democracy initiative (page 3), youngsters being 'mini' police for the day (page 21), an innovative swimming programme that's helping people living with cancer (page 7), take a look back at our popular Year of Outdoors project (page 12) and we say thank you to our tree wardens (page 13).

## Get help from the community

There are lots of local community groups and organisations that are offering help and support for Chesterfield residents.

### Food Banks

For information on foodbanks near you visit the website for Rural Action Derbyshire: [www.ruralactionderbyshire.org.uk/foodbanks](http://www.ruralactionderbyshire.org.uk/foodbanks) or call: 01629 529970

### Chesterfield Citizen's Advice

Advice Helpline call: 0808 278 7843  
GP Surgery Outreaches: Contact your GP surgery to book a telephone appointment.

### Derbyshire Unemployed Workers Centre

Call 01246 231441 or email: [info@duwc.org.uk](mailto:info@duwc.org.uk) or send the team a Facebook message.

### Domestic Abuse

Call: 08000 198 668 If it's an emergency, call 999.  
Text: Derbyshire Domestic Abuse Support Line 07534 617252 or email: [derbyshiredahelpline@theelmfoundation.org.uk](mailto:derbyshiredahelpline@theelmfoundation.org.uk)

### Derbyshire National Careers Service

For aged 19yrs+ or age 18 if not in education or employment. Chesterfield area: 07717 303855 or [wendy.leigh@derbyshire.gov.uk](mailto:wendy.leigh@derbyshire.gov.uk)

### Homelessness

Pathways of Chesterfield: 01246 498204 or visit: [www.pathwaysofchesterfield.co.uk](http://www.pathwaysofchesterfield.co.uk)

### Mental Health

Relate Chesterfield: 01246 231010 or [admin@relatechesterfield.org.uk](mailto:admin@relatechesterfield.org.uk)

See page 30 of this magazine for further contacts.

Please check our website for the latest Covid-19 information.

# Children share their ideas to improve Chesterfield

Pupils at Highfield Hall Primary School have been exploring how we can all work together to improve Chesterfield and create a more sustainable town as part of a new local democracy learning programme.

The children drew up ideas about how they think the local area, including the town centre and Queen's Park, could be improved – and then had the chance to share their thoughts at a special question and answer session with councillors.

Aimed at pupils aged between 6 to 11 years, the programme is designed to help them think about how working together as a community can contribute to making big changes for the future, with a focus on sustainability. It also supports the wider curriculum including English language skills.

Councillor Amanda Serjeant, deputy leader of the council said: "This has been a fantastic opportunity for local school children to learn more about our town and contribute their ideas as part of the curriculum. They were all really enthusiastic about the programme and had some great ideas for ways we could improve our town and make it more sustainable."

Councillor Amanda Serjeant attended the school with local ward councillors, Jill Mannion-Brunt and Tom Murphy, to answer questions about the council and also accompanied the children on their visit to the town centre.

The pupils had some great ideas including the use of public water fountains, reducing traffic in the town centre, rewarding recycling and encouraging people to walk and cycle more.

The council has supported the pupils with the 'Making your town a better place' project as part of our work to help young people understand how local democracy shapes our everyday lives.

The initiative is a pilot project developed by the Council of Europe and is set to be rolled out to schools across the continent.

*Cllr Serjeant being presented with letters the children wrote.*



# Chesterfield homes benefit from a facelift

A major regeneration project which is investing £8 million to improve the look and feel of homes in Chesterfield is progressing well, with work on the latest blocks of flats complete.

The Residential Block Refurbishment Scheme is part of the council's commitment to providing high quality housing and creating modern, attractive places for people to live, right across the borough.

Ashcroft Court in Old Whittington is one of the latest blocks of flats to benefit from a major facelift as part of the scheme, with almost £1 million being invested to refurbish the building.

Extensive internal and external improvements have been completed, including the re-tiling of the roof and upgrading of roof insulation to provide better thermal efficiency. Windows in flats and communal areas have also been replaced with A rated thermal efficient equivalents which also give the block a modern facelift.

Communal areas have been fully upgraded and emergency lighting has been renewed with longer lasting, energy efficient LED fittings. The council has also upgraded all of the electrics including the door entry system. New extractor fans have been installed in all of the flats and a number of the homes now have new boilers.



Extensive refurbishment works have also been completed at Seaton Croft, with residents now settling back into their homes. Each flat has been fully redecorated, and new modern kitchens and bathrooms fitted. To improve the energy efficiency of the flats, new windows have been installed as well as energy efficient boilers. The communal areas of Seaton Croft has also been updated with new flooring throughout and a refresh of the paint work.

Councillor Chris Ludlow, cabinet member for housing, said: "A key part of our housing strategy is to ensure that our homes are of excellent quality and that we create attractive, modern places that people choose to live in, so we are really pleased that this scheme is progressing well."

"In response to the climate emergency that was declared in July 2019, the council is committed to ensuring that its existing housing stock is as energy efficient as possible."

Over at Brearley and Dixon Court, work is progressing well with new windows being installed throughout and the flat roofs being replaced. Work is expected to be completed in the coming weeks – meaning even more tenants can benefit from improvements to their homes.

The £8 million Residential Block Refurbishment Scheme will continue to run with works at Newland Dale, Birchover Court and Tansley Court scheduled for 2022 and 2023. Keep an eye out for the latest information about these projects in future editions of Your Chesterfield.

The latest refurbishment projects follow the recent success of the modernisation programmes at the Grangewood Estate and at Pullman Close, Staveley – both of which have undergone similar improvements to help give the homes and areas a fresh and modern look.



Work is progressing well at Brearley and Dixon Court



Councillor Tricia Gilby, Leader and Councillor Chris Ludlow, cabinet member for housing, visited Ashcroft Court

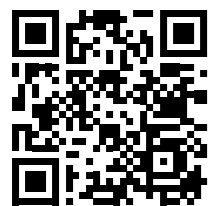


# Get fit in 2022

Did you know there are a range of membership options available for you and your family at our leisure centres?

Queen's Park Sports Centre and Staveley Healthy Living Centre have various membership and payment options - so whatever your level of fitness, we have a package for you.

You can also get other benefits such as discounts off children's parties and the café, plus advance bookings for activities.



**Fancy giving us a try?**

Visit [leisureoffers.co.uk/chesterfield](https://leisureoffers.co.uk/chesterfield) to claim your free seven day pass.

## Queen's Park Sports Centre

01246 345 555

[qpscenquiries@chesterfield.gov.uk](mailto:qpscenquiries@chesterfield.gov.uk)

Boythorpe Road, Chesterfield, S40 2NE.

## Healthy Living Centre

01246 345 666

[hlcenquiries@chesterfield.gov.uk](mailto:hlcenquiries@chesterfield.gov.uk)

Barlow Road, Chesterfield, S43 3XR.

## Supporting people into employment

**We're working with Job Centre Plus, local employers and training providers to increase the profile of local training and job vacancies.**

We regularly hold recruitment events to help put job searchers in touch with local employers – both in person and through virtual jobs fairs – so if you're looking for your next move, keep an eye out on our social media channels and website to find out more.

Almost 1,200 vacancies were advertised at one of our more recent events held on the market place. More than 200 people attended – meeting 37 different employers and leading to 32 different job offers on the day!

We also support the national Kickstart programme which helps young people into the workplace. As part of this initiative, we welcomed three new recruits into our customer services team, with more joining in 2022.

Councillor Amanda Serjeant, deputy leader of the council, said: "We are incredibly pleased about the nature and number of employment and training opportunities now available for young people through small and large employers in Chesterfield and surrounding areas.

"The market place event allowed job seekers to directly meet employers and find out more about the opportunities available in the area, which many attendees found useful.

"Each event is designed to give people a helping hand to find their next role and support local businesses to find new members of staff."



## Innovative swimming programme picks up national award

**An innovative swimming programme which supports local people who have had cancer has been recognised with a national award.**

We were delighted to be announced as the winner of the Swim England Health Impact Award at the 2021 Teaching and Education Awards for our delivery of 'OutSwimming Cancer' sessions.

Since early 2020, residents in Chesterfield who have had cancer have been invited to take part in free, relaxed swimming sessions at Queen's Park Sports Centre thanks to funding from Weston Park Cancer Charity.

The council was first approached about the sessions by one of its swimming instructors, Lesley Rechert, who realised the benefits that swimming could bring to people after their cancer treatment. Working with Lesley, we were able to create a programme that provided swimming sessions for adults in need of support with their long term recovery.

Councillor Jill Mannion-Brunt, the council's cabinet member for health and wellbeing, said: "We are very proud of the team at Queen's Park Sports Centre for achieving this award as they have put a huge amount of effort in to making this a success.

"It's important that everyone feels like they can pursue a healthy lifestyle and use our facilities to achieve this. Our staff at the centre are really supportive and it's brilliant that we can offer the 'OutSwimming Cancer' programme to people who are going through such a difficult time in their lives."

**OutSwimming Cancer sessions continue to take place every Monday.**



For more information visit [www.chesterfield.gov.uk/sport-and-leisure/queens-park-sports-centre/out-swimming-cancer](https://www.chesterfield.gov.uk/sport-and-leisure/queens-park-sports-centre/out-swimming-cancer)

## Queen's Park Sports Centre

01246 345 555

[qpscenquiries@chesterfield.gov.uk](mailto:qpscenquiries@chesterfield.gov.uk)

Boythorpe Road, Chesterfield, S40 2NE.



# Helping businesses to grow

Small businesses continue to face uncertain times, and we're more committed than ever to help them start, grow and thrive in Chesterfield.

With the opening of our third enterprise centre at the Northern Gateway just around the corner, we're putting the spotlight on how managed office spaces work and, crucially, how they help local businesses create jobs for local people.

Our long-standing innovation centres at Tapton Park and Dunston are home to a range of businesses across many sectors. They offer flexible letting terms to support different working styles including virtual offices, single desks and larger offices on an easy in, easy out terms – all designed to take the pressure off small firms and help them adapt as their business changes.

But our centres don't just provide a physical place to call home.

Every business also has access to 'wrap-around' advice and support to suit them. Things like help with admin, advice on growing their operations and the provision of conference rooms and technology when hosting larger meetings or events – practical tools to help them succeed.

There is also a specialist one-to-one advisor who provides advice to businesses to help them grow. They can also connect them with the D2N2 Growth Hub where they can access bespoke guidance on business financing, further investment opportunities, advertising support and skills development.

Peter Minto is the Director of Train to Safety, a company that provides health and safety training and advice. Initially he set up the business using a virtual office at Dunston Innovation Centre but thanks to year-on-year growth has now taken on an office suite at Tapton Park Innovation Centre.

He explained: "The virtual office was a brilliant way to start a business, mainly thanks to the support and professionalism offered by the centre's staff who were fielding all telephone enquiries and taking orders on our behalf. When we needed a full-time member of staff, we took up a 'rent a desk' option and moved to the Tapton Innovation Centre where we could also hire the two large meeting rooms as and when we needed them."

Another advocate of this model is Damien Eaves, the Managing Director of Validate Consulting, which advises businesses on risks to employee health, and how to avoid them. Having started the company alone, he now employs seven consultants in Chesterfield – growing into larger offices at Tapton as his company thrived.

He said: "One of the best things was the internal business support. They have one-to-one free advice available for your business, which has been great, especially for me growing from a one-man band to now having a team. The reception team are always helpful, and we often use the meeting rooms for training and interviews."

Meanwhile Craig Day, the Commercial Director for Focal Point Technology, says it is a great help to have a reputable business address to bring customers to, adding: "We benefit from business advice and cheerful and personable reception staff to handle our calls while we are on the road or working remotely. Being able to expand out into conference rooms and have all of the business facilities like reception, post, deliveries and utilities without all the work and expense of having to set these things up is a big bonus."

The council's innovation centres provide a fantastic place for businesses to grow and, when coupled with additional help through things like the Vision Derbyshire Business Start Up Support scheme, create even more opportunities to thrive. The scheme provides access to specialist start-up advisors, networking opportunities and funding to help new businesses.

**Could we offer the kind of support your growing business needs?**

If you're interested in starting your business in, or relocating to, one of our innovation centres, please email [enterprise@chesterfield.gov.uk](mailto:enterprise@chesterfield.gov.uk) to find out more about how we can help.



Validate Consulting are one of the many successful businesses based at our innovation centres.



Our staff at Dunston innovation centre are friendly and helpful.

# Climate change action in Chesterfield

Understanding how we can tackle climate change – both as individuals and as a community – can feel daunting, as it is such a large and complex issue.

But one important way we can all make sense of our impact on the environment and how we can take effective steps to lessen it, is by understanding where our carbon dioxide (CO<sub>2</sub>) emissions come from.

This is key to helping us prioritise those actions that will have the biggest impact and underpins the work we're currently progressing through our climate change action plan.

## Where do emissions in Chesterfield come from?

Together the use of electricity and gas accounts for around 58% of carbon emissions in the borough.

The next largest source, with 32% of the total, is transport including cars, heavy goods vehicles, trains, and aviation. This source not only includes emissions from travelling locally but also from transporting products into the borough.

Waste accounts for around 5% - this includes the rubbish you throw away or recycle and the treatment of wastewater from homes.

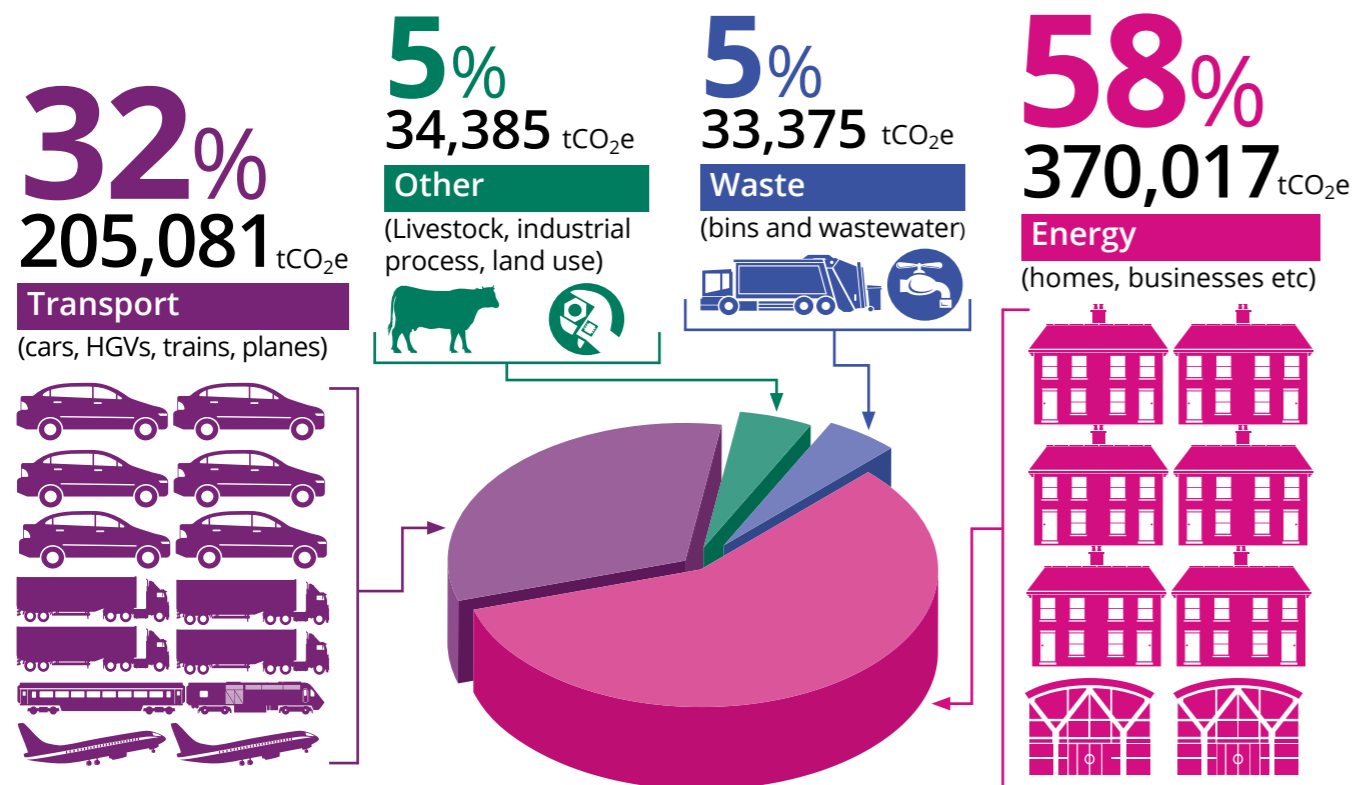
This leaves around 5% of total emissions coming from other sources, including livestock, industrial processes and land use.

We save around 5,000 tonnes of carbon dioxide per annum because of trees and planting more will further increase the amount of carbon dioxide soaked up.

Councillor Amanda Serjeant, deputy leader of the council, said: "We all want to do our bit to reduce emissions and help protect our planet for the future. It's important that we understand where our emissions come from so that we can prioritise changes to our lifestyles and take actions that will have the biggest impact."



## Carbon emissions in Chesterfield – in numbers



tCO<sub>2</sub>e = tonnes of carbon dioxide equivalent. Data retrieved from Anthesis Scatter Tool January 2022.

# Give growing your own a go this year

The food we choose to eat can have a huge impact on climate change. Not only are carbon emissions created by commercial farming and food manufacturing, they are also created by the transport and storage of these goods.

Setting yourself up with a fruit and vegetable patch – or window boxes if space is limited – will not only provide you with opportunities for a new hobby, fresh air and tasty home-grown produce, you will also be cutting down on the amount of transport and other energy resources needed to produce the same food.

Councillor Amanda Serjeant, deputy leader of the council, said: "It can be tricky to know where to start when it comes to growing your own fruits and vegetables, but no matter how big or small your space is there are some simple things you can do to start producing your own food."

## Easy examples to get you started could include:

- A small herb garden can be grown in containers and harvested as you need them throughout the year. Salad leaves can also be easily grown in containers either indoors or outside and picked regularly so you have fresh salad all year round – minus the plastic packaging too!
- A favourite amongst gardeners are tomatoes. You can use these for fresh salads but also cook them down for tomato sauces. These require a bit more space but can also be grown in containers and some varieties are even suitable for growing in hanging baskets.
- Some vegetables including kale, asparagus, peppers and certain onion varieties are perennials. This means they can regrow the following year without being replanted which can reduce the amount of work needed to grow vegetables.



Photo by CDC on Unsplash

## Looking for some inspiration?

No matter how big or small your space is there is almost certainly something you can grow for yourself.

The Royal Horticultural Society has some great guides on growing your own for both beginners and experts:

[www.rhs.org.uk/advice/grow-your-own](http://www.rhs.org.uk/advice/grow-your-own)

If you've outgrown your garden and want to grow even more, we have allotment sites around the borough. Many of these are in high demand but you can find out how to get a plot on our website:

[www.chesterfield.gov.uk/allotments](http://www.chesterfield.gov.uk/allotments)

# Chesterfield's GREAT OUTDOORS



## Year of Outdoors scrapbook

It's been almost a year since we launched our Year of Outdoors project to encourage people to spend more time in our parks and outdoor spaces – and thousands of you took up the challenge!

The response has been incredible, with people of all ages trying their hand at new activities or discovering some of the fantastic landscapes we have on our doorstep.

We have focussed on a different theme each month, with a vast range of free activities on offer. Highlights have included canoeing, giant land art, pond dipping, bug hunting, ice skating and a festive Christmas Lantern Parade to name but a few.



## Tree Wardens get started in Chesterfield

A new volunteer project that gives local people the opportunity to help care for trees in Chesterfield is up and running across the borough.

Chesterfield Tree Wardens is a group of volunteers who are helping us to monitor and care for local trees, while supporting our work to plant new woodland.

Launched during National Tree Week, volunteers have met to learn more about the role, speak to volunteers from a similar project in Erewash and meet representatives from the Tree Council. To celebrate the launch, an English Oak tree was planted in Shentall Gardens.

Councillor Jill Mannion-Brunt, cabinet member for health and wellbeing, said: "It was fantastic to be able to meet our new Tree Wardens, who will act as our eyes and ears on the ground - helping us prioritise where our services are needed. They are already getting involved in supporting the planting and care of new and young trees, and helping to influence where new trees might be planted.

"In Chesterfield, we're lucky that we already have a substantial number of well-established trees and wooded areas. We know our green spaces are valued by people from across our borough and we're determined to work more closely with our residents to help protect and improve these areas.

"Thank you to everyone who has come forward to volunteer. Together we will achieve a lot and make a real difference to our local environment."

Tree Wardens have access to seven training modules through the Tree Council and there are also opportunities to learn more by working with other volunteer groups.

The work supports our Climate Change Action Plan and the target to plant at least 1,000 trees each year. Last year this target was exceeded – we planted 3,000 new trees in the borough.

This year, we're aiming to plant another 3,000 new trees, working in partnership with Derbyshire Wildlife Trust and with funding from the Green Recovery Challenge Fund. They will be planted in Brearley Wetland, Badger Recreation Ground, Whitecotes Park and other smaller sites across the borough.

If you want to help care for trees in Chesterfield you can volunteer for the Tree Warden project by emailing: [greenspaces@chesterfield.gov.uk](mailto:greenspaces@chesterfield.gov.uk)



Our photo shows new Tree Warden, Stephen Lawrence learning a quick method for gauging trees.



# Could Careline help you?

Our Careline service is continuing to make a huge difference to many residents across the borough – allowing them to live independently with help and support available at the touch of a button.

Careline provides peace of mind to you, your family and your loved ones so that no matter what happens, someone will be there to help, 24 hours a day, seven days a week.

You'll be provided with a pendant which can be worn around your neck or wrist. This is an alarm which you can press to call for an emergency response from our Careline team – meaning you can carry on as normal, safe in the knowledge that should anything go wrong, you can contact Careline by pushing the button on your pendant.

Careline can then get in touch with your emergency contacts, request medical assistance, call the emergency services or send a Careline response officer to make sure you are safe and well. Our trained responders can be with you within 30 minutes, should you need emergency assistance.

*Team members like, Sheila Grant, are waiting to take your call.*



*Careline response officers, L to R: Laura Greenhalgh, Clayton Buxton and Terrie-Ann Brooker-Martin*

Councillor Chris Ludlow, cabinet member for housing, said: "Careline is a really important service and an essential lifeline for many members of our community, allowing them to live independently while providing reassurance for their loved ones, which over the past two years has been more important than ever.

"Even if you don't need the service yourself, why not encourage a friend or family member who lives alone to register, for extra help and support? The service is available to anyone of any age in Chesterfield, whether you live in your own home or are a council tenant."

Find out more: [www.chesterfield.gov.uk/careline](http://www.chesterfield.gov.uk/careline) or call 0300 303 3378. Our phone lines are open 24 hours a day, seven days a week.

## Careline



# Transforming our town for the future

As we look ahead to 2022 and beyond, exciting times lie ahead for our town.

We already have a raft of ambitious regeneration schemes well underway or nearing completion across the borough. From state-of-the-art office accommodation which will support local businesses to start, grow and thrive, to plans to transform the area around the train station into a bold and welcoming gateway to our town, new opportunities are all around.

This spring sees the start of another major regeneration scheme that will revitalise and better connect key areas of our historic town centre and revamp the Stephenson Memorial Hall, which houses the Pomegranate Theatre and Chesterfield Museum.

Almost £20 million – secured by the council from the Government's levelling up fund – is being used to bolster our existing 'Revitalising the Heart of Chesterfield' project, creating even more opportunities to rejuvenate our town centre for generations to come.

£11.4 million will go towards the remodelling and refurbishment of Chesterfield's 'striking' Stephenson Memorial Hall (see page 19 for details).

The remaining £8.5 million will be used to extend the planned regeneration of our town centre, with investment centred on key public spaces and the connections between them – including Burlington Street, Corporation Street, Rykneld Square, Spire Walk, Market Square, New Square and Packers Row.

It will complement work to regenerate Chesterfield Market and the Northern Gateway (see page 18) and – at the other side of town – will connect with plans to transform the area around Chesterfield Station (see page 20).

Councillor Tricia Gilby, leader of the council, said: "This is fantastic news for Chesterfield. The extra funding will complement the significant investments that we and our partners are already making and puts our town centre in a strong position for the future.

"We want Chesterfield to be a go-to place and we're confident that, taken together, the widespread improvements across the town will achieve this by creating a modern town centre that builds on our proud history and heritage."

**See overleaf for an at-a-glance guide to the key elements of the Revitalising the Heart of Chesterfield regeneration project.**

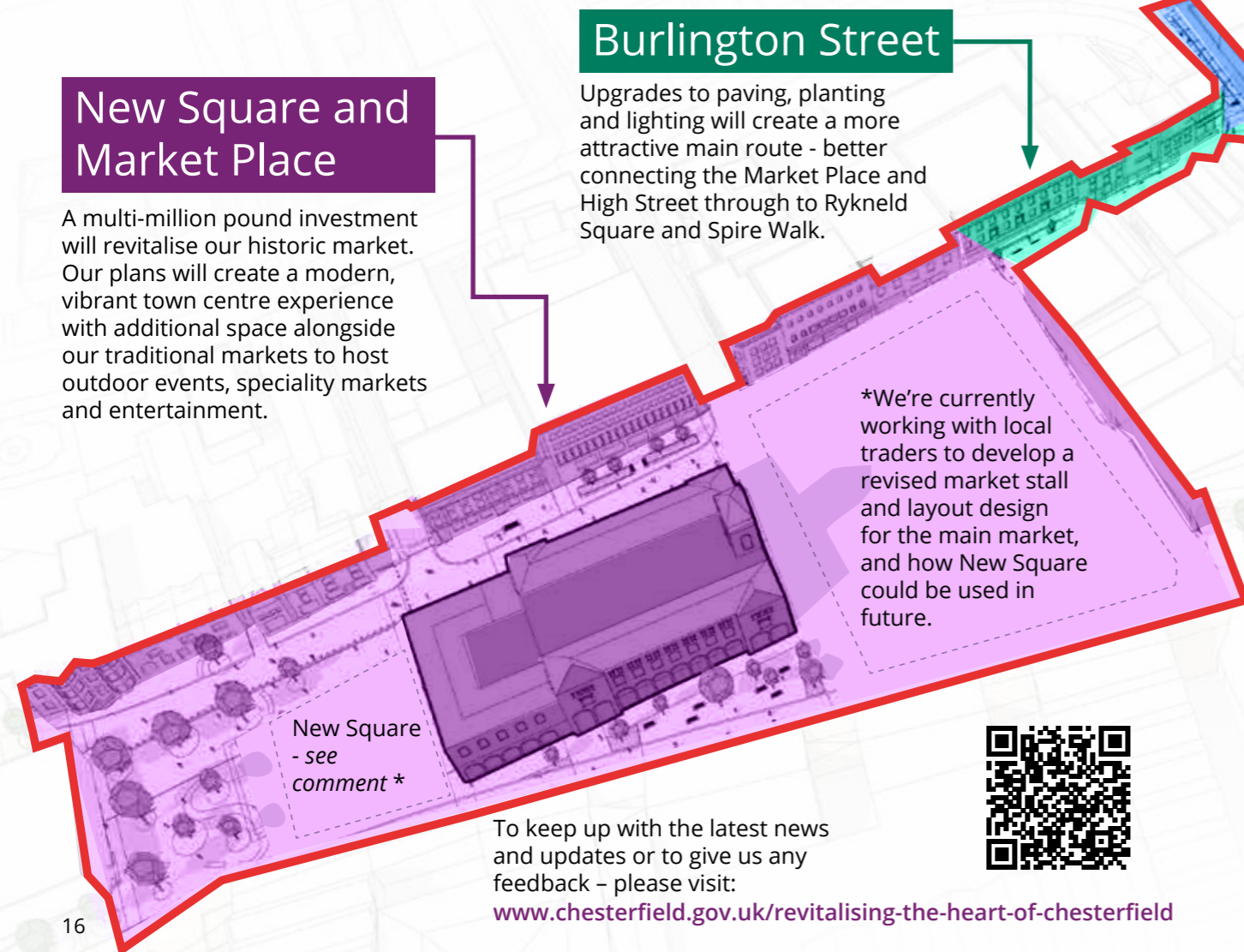




# Revitalising the heart of Chesterfield

Key public spaces that make up Chesterfield town centre will be re-imagined – creating attractive and flexible areas suitable for hosting markets, festivals, events, cultural celebrations, and community gatherings.

New paving, seating, lighting, planting, street furniture and digital capabilities will combine to create better-looking and better connected spaces which people can enjoy and socialise in. This map shows the key areas of focus.



## New Square and Market Place

A multi-million pound investment will revitalise our historic market. Our plans will create a modern, vibrant town centre experience with additional space alongside our traditional markets to host outdoor events, speciality markets and entertainment.

New Square - see comment \*

## Burlington Street

Upgrades to paving, planting and lighting will create a more attractive main route - better connecting the Market Place and High Street through to Rykneld Square and Spire Walk.

\*We're currently working with local traders to develop a revised market stall and layout design for the main market, and how New Square could be used in future.



To keep up with the latest news and updates or to give us any feedback – please visit:

[www.chesterfield.gov.uk/revitalising-the-heart-of-chesterfield](http://www.chesterfield.gov.uk/revitalising-the-heart-of-chesterfield)

## Corporation Street

A tree-lined boulevard with improved paving and lighting will revamp this key gateway to the town centre and provide a welcoming environment for visitors to the refurbished theatre and museum.

## Station Masterplan/Waterside

Corporation Street improvements will link to the regeneration plans for the area around Chesterfield Station and Waterside.

## Spire Walk

We will work in partnership with the Church of St Mary and All Saints to create a more welcoming and attractive space in which to enjoy our iconic Crooked Spire.

## Stephenson Memorial Hall

A £15 million refurbishment and remodelling of the Grade II listed building, which houses the Pomegranate Theatre and Chesterfield Museum is set to start this year - creating a modern visitor experience in the heart of our town.

## Rykneld Square

We want to make better use of this open public space - to better and more safely connect the town centre and Crooked Spire and improve the feel and flow of this area.

## Packers Row

Improved paving, seating and street furniture - with a light canopy to add character. Connects through to the new-look Elder Way and Northern Gateway.

Attractive lighting, new digital facilities and more greenery will feature across the regeneration sites - creating a more attractive, welcoming and safe town centre for everyone to enjoy.



# Setting the scene on **Elder Way**

The attractive new look of Elder Way provides a glimpse of the style and atmosphere that will be seen across the town centre as work progresses over the next four years.

New high-quality paving, wider pavements for outdoor socialising, tree-lined avenues and attractive lighting make for a more enjoyable space.

These improvements have created a welcoming route into the town centre from the Northern Gateway site, where the state-of-the-art enterprise centre – due to open this year – now sits.

Nearby Packers Row is the next leg of this journey into the town centre, with work to install similar improvements due to start soon.



# Chesterfield Market

Meanwhile plans to revitalise Chesterfield's historic market are moving ahead.

Public consultation and engagement with local residents, businesses and market traders showed strong overall support for the ambition to invest in our market's future – creating a modern, vibrant town centre experience with space to host outdoor events, speciality markets and entertainment.

Some issues about the stall layout and size were raised, and we're continuing to work with market traders to review proposals to ensure the new-look market reflects their feedback as far as is practical within the scheme.

Councillor Kate Sarvent, cabinet member for town centres and visitor economy, said: "Chesterfield Market is the heart and soul of our town and we continue to work together with residents, market traders and local businesses to make sure improvements meet their needs."

"Since the original proposals were drawn up, we have been successful in securing a further £8.5 million to bolster our investment, through the Government's levelling up funding.

"This has given us an amazing opportunity to make improvements right across the town centre which will complement the ambitions we already had for our market – the next few years are set to be a very exciting time for Chesterfield!"

Plans include better lighting and power, improved access and new stall layouts, general paving repairs, new flexible trading areas and repairs to existing stall structures.

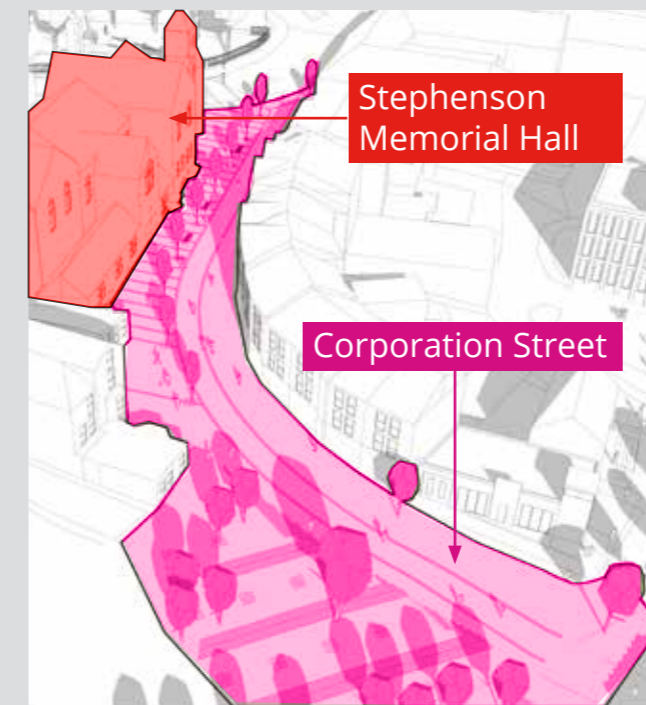
This element of the project received £650,000 of funding through the D2N2 Local Enterprise Partnership Local Growth Fund.

# Plans progressing for **Stephenson Memorial Hall**

It's all change for the Pomegranate Theatre and Chesterfield Museum this year as plans to create a new and enhanced customer experience at Stephenson Memorial Hall are set to get underway\*.

Around £11 million of the levelling up grant funding we secured will be used to fund a £15 million project to refurbish and remodel the theatre and museum, which are housed in the Grade 2 listed building on Corporation Street.

Meanwhile the Pomegranate Theatre is set to close in the summer, with many shows including the annual Christmas Pantomime, moved to The Winding Wheel Theatre. The improved theatre is set to re-open in late 2024.



Councillor Kate Sarvent, cabinet member for town centres and visitor economy, said: "Stephenson Memorial Hall is one of our most striking buildings and these exciting plans will make it even more memorable and enjoyable – creating a modern visitor experience in the heart of our town centre."

"There will inevitably be some disruption, but we're working hard to make sure people will still be able to enjoy our theatre and museum attractions in new and innovative ways while the transformation of the building is carried out."

The proposals will deliver the refurbished and extended Pomegranate Theatre, and a reconfigured and modern museum, together with new gallery space, a café bar, education and community facilities

The work will also protect the historic building and ensure that it remains part of the borough's heritage for many more generations to come.

Creating a more accessible experience is another key aim of the project. The plans include a new lift which will help disabled guests access the circle and upper museum floors and there will be more wheelchair spaces within the theatre.

Also included in the plans are improvements to lighting, heating, and ventilation.

**More details about the project and how this will affect performances and the museum are available on our website. \*The proposals were subject to planning approval as Your Chesterfield went to print.**

The museum is temporarily closing its doors while refurbishment work is carried out. Most artefacts will be safely stored away – but options for 'community exhibitions' which would see some of the town's treasures out on tour are being explored, so our local heritage can still be enjoyed.

# Steaming ahead with the Station Master Plan

Plans to transform the area around Chesterfield Station – a key gateway to the borough – are pressing ahead despite news that HS2 East will not be delivered in full to our region.



Our station master plan will see a complete redevelopment of the area, with the aim of creating a modern entrance to our town which is both inviting and accessible.

Councillor Tricia Gilby, leader of the council, said: "Whilst the Government's failure to commit to HS2 in full is disappointing, delivering our station master plan is still one of our key priorities. It will drive new economic opportunities whilst also creating improved access to our town which will support the visitor economy."

"The work to modernise the station area combined with our wider regeneration programme in the town centre, will further help ensure Chesterfield remains a thriving borough and that we're in a strong position to recover from the Covid-19 pandemic."

To help facilitate the delivery of our plan, the former Chesterfield Hotel is being demolished and Jewson building merchants on Spa Lane are

relocating to a new base on Sheffield Road. This will allow the creation of a new access road with improved cycling and walking routes. There is the potential for new business units along this road, creating further economic opportunities.

The work will improve this key gateway to the town centre – creating a welcoming first impression for visitors by rail. A new transport hub will make onward journeys easier and a cycle hub will ensure that visitors can take advantage of green transport options.

Funding for regeneration at and around the station was secured by Chesterfield Borough Council and Derbyshire County Council through both the Sheffield City Region (SCR) and East Midlands (D2N2) Local Enterprise Partnerships.

**Further details on the development of the station area will be released over the coming months.**



## Learning about community safety

Three primary schools in Derbyshire, including one here in Chesterfield, have joined a pilot scheme to help young people find out more about keeping our communities safe.

The Derbyshire Mini Police scheme is an engagement programme, organised by Derbyshire Constabulary and supported by the council. It gives children the opportunity to learn about their safety and their role within the community.

The scheme is also designed to support their development, while building a positive and trusting relationship with the police.

Aimed at young people aged between nine and eleven years, there is a focus on how we can all play our part in making Chesterfield a safe and happy place to live.

Councillor Peter Innes, Chair of Chesterfield Community Safety Partnership, said: "This is a really positive scheme that helps build a strong relationship between the police and the communities they serve. It gives our young people a voice to say what matters to them, and talk about what could be improved about their environment, working alongside local officers."

Derbyshire Constabulary's PCSOs joined forces with Spire Juniors in Chesterfield, Landau Forte Academy Moorhead in Derby and Peartree Community Junior School in Derby for the learning initiative.

If successful, the Mini Police scheme will be rolled out across the Derbyshire.

# Staveley regeneration moves a step closer



## Building skills for the future

2022 is an important year for the Staveley Town Deal – moving from the planning phase to delivery of the projects. Over the next year work should begin on most of the Town Deal projects, which aim to help ensure Staveley is a place to start, stay and grow.



Making sure that local residents can develop the skills they need to have a great career and a bright future is the focus of one of the projects that has recently received approval from the Staveley Town Deal Board.

With a focus on practical skills development, the Construction Skills Hub will provide a platform for on-site construction training, careers activity and work experience in Mastin Moor. Over ten years, it aims to provide careers insights, training and work experience for over 5,000 learners.

Councillor Tricia Gilby, leader of the council, said: "This is a great project for Staveley residents as it will help ensure that the training needed to access good quality jobs is available on their doorstep. It serves as a great example of what we hope to achieve through the town deal - once-in-a-lifetime regeneration and the creation of new economic opportunities open to all. With the board's approval we can now start to work towards delivering this project."

Initially the hub will provide training on site in joinery, brickwork, ground works and electrical installation but aims to expand

to include retrofit and green technology training. It will be open to school leavers and individuals seeking to train or retrain.

The project has received support from local construction companies and the aim is to maintain these links to ensure training meets industry needs.

Ivan Fomin, Chair of the Staveley Town Deal Board, said: "This is a fantastic project for Staveley, the link between learning and business will help ensure that it delivers the skills needed to meet future demand. In time this will help ensure Staveley and its residents succeed."

A site has been selected for the hub in collaboration with the Devonshire Group. The next stages will see the selection of a local provider to deliver training and operate the site. This provider will help influence how the hub is developed to ensure that the provision offered from the facility provides the necessary space and facilities to meet learner and industry needs.

The first cohort of learners will be engaged from September 2022 with the training compound expected to be completed by September 2023.



Staveley market place



King George V playing field

As part of the town deal process, the council also bid and received funding to deliver several projects ahead of the Town Deal.

Accelerator funding worth £500,000 has been used to support a variety of projects in Staveley that aim to improve the quality of life for local people and kickstart the Town Deal.

Springwell Community College will be using some of this funding to create a new outdoor performance space over the next couple of months.

The new canopy will be next to the performing arts block – providing space for summer concerts and productions to be held outside. It can also be used by students during the day as a covered social and dining space.

Ian Wingfield, headteacher at Springwell Community College, said: "The SCART (Springwell Community Arts) programme at Springwell has had a challenging time through the pandemic and this investment will help to reboot and enhance this highly regarded set of activities. The new performance space

will be a welcome addition to our college and will create new opportunities for students to develop their skills and build on stage experience."

Accelerator funding has also been used to create new play facilities at King George V Playing Fields, upgrade CCTV in Staveley town centre, improve drainage on the Chantry Playing Fields and to undertake preparatory works for DRIIVe, a rail innovation centre which will be built in Barrow Hill.

## Stay up to date

There will be lots of progress made on the Town Deal projects throughout 2022 and there will be opportunities for residents to get involved.

**You can keep up to date with all the latest developments and find out more about each of the eleven projects on our website: [www.chesterfield.gov.uk/staveley-town-deal](http://www.chesterfield.gov.uk/staveley-town-deal)**

# Small increase in council tax to protect vital frontline services

Residents will see a small increase in council tax – an extra 6.4 pence a week for most households in the borough – to help protect essential frontline services that local people rely on.

Our annual budget for 2022/23 has once again been set against a challenging backdrop, as the council continues to deal with the significant financial impact of the Covid-19 crisis, increased pressure on council services and the legacy of Government funding cuts over the past decade.

Figures show that the pandemic has led to £1.8 million in lost revenue for the council in 2021/22 – with Government funding schemes falling significantly short of compensating the council for these losses.

## The below inflation rise of 2.86% means that:

- People living in a Band A property (more than half the homes in the borough) will pay an extra 6.4 pence a week – a total rise of £3.33 on last year's bill for the council's services.
- Residents in a Band D property will pay an extra 9.6 pence a week – a total rise of £5 for the year.

Councillor Tricia Gilby, council leader, said: "Proposing an increase in council tax by even a small amount is never a decision we take lightly, and one that I understand many will not welcome alongside the other cost of living increases currently facing the borough's households."

"However, it continues to be a challenging time in which to balance the council's budgets, which we are legally required to do. We have suffered from a decade of unprecedented reductions in Government funding, rising demand for our services, and a two-year global pandemic which has tested our capabilities like nothing before – and from which the council and our communities continue to recover."

"It is also very difficult to make any firm plans for the future when the Government continues to only allocate money to local government on a year-by-year basis. Whilst I welcome the additional one-off funding that we have recently received from the

Government, the Government must make a multi-year funding commitment to local government so that we can place the council's finances on a sustainable footing for the next four years. We cannot do this at present.

"Despite these challenges, we remain resolute in our commitment to protect the essential facilities and services that local people rely on, whilst also retaining the ability to invest in Chesterfield's economy and communities so that our borough continues to be in a strong position for the future."

"The council provides more than 50 different services for the borough's residents, including waste collection and recycling services, keeping the streets clean, providing award-winning parks and open spaces, and operating sports and cultural venues to name but a few – and we're making significant multi-million-pound investments in the delivery of key regeneration schemes right across the borough which will benefit local people for generations to come."

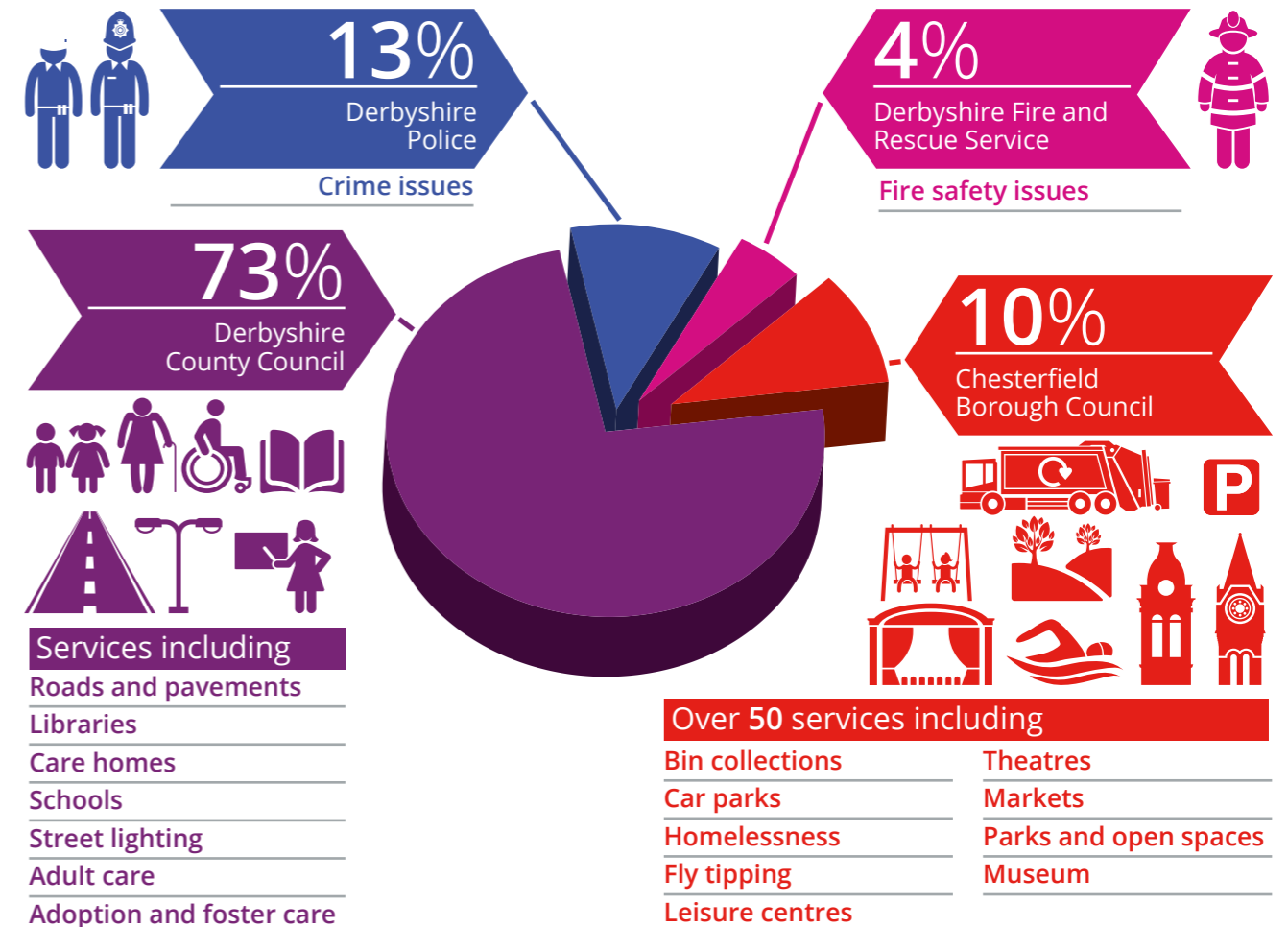
"I can assure Chesterfield residents that the extra income which will be raised through the council tax increase will be put to good use in advancing the council's bold and ambitious commitments – as ever, putting our communities first."

## Council tax rebate

In February, the Government announced that households living in Band A to D homes would be eligible for a £150 payment towards their Council Tax bills in April 2022. At the time of Your Chesterfield going to print, the council was taking steps to determine how best to administer these payments. Please note they will not be deducted from annual council tax bills, as payments will be made outside of the council tax system.

Please see [www.chesterfield.gov.uk/council-tax](http://www.chesterfield.gov.uk/council-tax) for updates.

We collect council tax on behalf of other public services – only 10 per cent of the money is kept by the borough council to pay towards our services – a visual breakdown of where your money goes is shown below.



# Using your parking permit could save you money!

Did you know that if you use your residents parking permit to park in Chesterfield for two hours each week, you could save around £156 per year.

You should have already received your annual parking permit in the post, which allows you to park in most of the council's off-street car parks for free before 10am and after 3pm Monday to Saturday and all day on Sundays and Bank Holidays.

Using your parking pass is a great way to support our markets and other local businesses, as well as being more environmentally friendly than travelling out of town to shop or visit a café or restaurant.

The full list of car parks that you can use your permit in is printed on the back of the card – or can be viewed at: [www.chesterfield.gov.uk/residents-parking-permit](http://www.chesterfield.gov.uk/residents-parking-permit)



# What's on

## Chesterfield markets

Chesterfield Outdoor Market takes place every Monday, Friday and Saturday from 9am to 4pm and the Flea Market is every Thursday from 9am to 4pm. **The Market Hall is open Monday to Saturday from 8.30am to 5pm.**

## Artisan Market in Association with The Market co.

The Artisan Market takes place on the last Sunday of the month featuring the very finest artisan market traders.

Market Square, Chesterfield, Derbyshire, S40 1AR.

27 March from 10am to 3.30pm

24 April from 10am to 3.30pm

29 May from 10am to 3.30pm

## Young Person's Market

Sunday 24 April

Sunday 26 June

Sunday 28 August

Sunday 30 October

**Stalls will be charged at £10 each.** Stalls must be booked online at [www.chesterfield.gov.uk/markettrading](http://www.chesterfield.gov.uk/markettrading)

## Record Fair

AA Record Fairs invites you to the Chesterfield Record Fair. With over 40 dealers from all over the country selling a range of LPs, CDs, Cassettes and music related DVDs.

Market Square, Chesterfield, Derbyshire, S40 1AR

10 April from 10am to 4pm

8 May from 10am to 4pm

12 June from 10am to 4pm

This year's festival is taking place from Saturday 14 May to Sunday 22 May and there are a number of both guided and self-led walks for you to get involved in.

To ensure the festival can be delivered safely, there are a limited number of tickets available for each walk. **Please note that booking is essential and anyone who has not booked an advance place may be turned away.**

To book your tickets for the festival: [www.chesterfieldwalkingfestival.co.uk](http://www.chesterfieldwalkingfestival.co.uk)

There are also many other self-led walks available in and around the borough, so these are also worth exploring - visit: [www.visitchesterfield.info/walking](http://www.visitchesterfield.info/walking)

Tel: (01246) 345727

[www.chesterfield.gov.uk/museum](http://www.chesterfield.gov.uk/museum)



## Brick Making with Wessex Archaeology

Saturday 26 March, 11am to 3pm  
**FREE EVENT**  
Look out for the activity tent in Rykneld Square, Chesterfield

To celebrate Derbyshire Archaeology Day join Wessex Archaeology to discover how to make bricks. You will be guided through the process of using clay and brick moulds to create your very own handmade bricks. You'll also be able to find out more about archaeology and a local dig that uncovered brick kilns.

The activity is suitable for adults and children aged 8 years and older.

Children must be accompanied by a responsible adult. The activity can be messy. No need to book, just drop-in on the day.

## Pomegranate Theatre

[www.chesterfieldtheatres.co.uk](http://www.chesterfieldtheatres.co.uk)

Box office: (01246) 345222

## Comedian Joel Dommett

Saturday 19 March, 8pm



## J.M. Barrie's Mary Rose

Tuesday 22 to Wednesday 23 March, Eves 7.30pm, Wed matinee at 2.30pm.

An old Sussex manor house is haunted by the ghost of a young woman.

## All Our Yesterdays

Tuesday 29 March, 7.30pm

## Psychic Sally - 10 Years and Counting

Wednesday 30 March, 7.30pm



## Family Show: Easter Panto - The Wizard of Oz

Saturday 2 April, 2pm and 6pm  
With star cast including **Kerry Katona** (Atomic Kitten), **Barney Harwood** (CBBC).

## Solve-Along-a-Murder-She-Wrote

Friday 8 April, 7.30pm  
Interactive cinema screening

## Satellite: Royal Opera Live - La Traviata

Sunday 17 April at 2pm

## Who Killed 'Agatha' Christie?

Tuesday 19 - Saturday 23 April, Eves 7.30pm, Wed mat 2pm, Sat mat 3pm  
By Tudor Gates. Presented by Tabs Productions

## Satellite: NT Live - Henry V

Sunday 24 April, 7pm

## Kinky Boots

Wednesday 27 to Saturday 30 April, Eves 7.15pm, Sat mat 2.15pm  
Presented by Chesterfield Operatic Society

## Dead Lies

Tuesday 10 - Thursday 12 May, Eves 7.30pm, Wed mat 2.30pm  
Hard-hitting political English thriller from No.1 Best Selling Crime Novelist Hilary Bonner. Star cast including Holby City's Jeremy Edwards.

## Dracula - Vortice Dance

Friday 13 May, 7.30pm

## Soul Sisters The Musical

Wednesday 25 May, 7.30pm  
Soul Sisters is the funky, feel-good original musical from writer David Kent and the producers of hit comedies Hormonal Housewives and Girls Just Wanna Have Fun.

## Satellite: Royal Ballet - Swan Lake

Sunday 29 May, 2pm

## Comedian Gary Delaney

Friday 17 June, 8pm



## Catch Me If You Can

Tue 3 May to Sat 7 May, 7.30pm, Wed, Thu & Sat mat 2.30pm.  
Dallas legend Patrick Duffy (Man from Atlantis; Step by Step) and Linda Purl (Happy Days; Homeland) new production of the Broadway thriller.



## Family Show: A Fright in the Museum

Saturday 18 June, 2.30pm

## Winding Wheel Theatre

[www.chesterfieldtheatres.co.uk](http://www.chesterfieldtheatres.co.uk)  
Box office: (01246) 345222

## The Scummy Mummies Show

Wednesday 16 March, 7.30pm

## Name of Love

Friday 18 March, 7.30pm

## Calling Planet Earth

Musical journey through the electrifying 80s.  
Saturday 19 March, 7.30pm



## The Fureys

Thursday 24 March, 7.30pm

## Comedian Julian Clary

Wednesday 23 March, 7.30pm

## Ranulph Fiennes Living Dangerously

Friday 25 March, 7.30pm  
'The world's greatest living explorer' - Guinness Book of Records

## Just Like That! The Tommy Cooper show

Friday 25 March, 7.30pm

## A Vision of Elvis

Saturday 26 March, 7.30pm



## The Three Degrees

Sunday 27 March, 7.30pm

## The Rocket Man

Two hours of glorious Elton hits live.  
Thursday 31 March, 7.30pm

## Nathan Carter

Friday 1 April, 7.30pm  
Unique blend of Celtic, country and pop.

## The Cavern Beatles

Saturday 2 April, 7.30pm

## Fleetwood Mac Legacy

Friday 8 April, 7.30pm

## The ELO Experience

Saturday 9 April, 7.30pm

## Paul Zerdin - Hands Free

Thursday 14 April, 7.30pm

## Dementia Friendly Screening: The King and I (U)

Tuesday 19 April, 1pm - 4pm

## G4 Live 2022

Wednesday 20 April, 7.30pm, VIP from 6pm

## Graeme Hall - The Dogfather Live

Friday 22 April, 7.30pm

## Abba Forever

Saturday 23 April, 7.30pm

## Glenn Miller and the Big Band Spectacular

Sunday 24 April, 7.30pm

## Alice Roberts - Ancestors

Thursday 28 April, 7.30pm



Please be aware events and performances may be subject to change, for the latest information visit: [www.chesterfieldtheatres.co.uk](http://www.chesterfieldtheatres.co.uk) and [www.visitchesterfield.info/whats-on](http://www.visitchesterfield.info/whats-on)

## Your local community bank

Chesterfield and North East Derbyshire Credit Union is a not for profit financial cooperative, owned and controlled by its members. It provides flexible savings accounts and small loans for anyone who lives or works in north eastern Derbyshire.

As a credit union it aims to help some of the most disadvantaged people in our community, including those who may not be able to get a bank account or access to finance.

It can offer small affordable loans from £100 to £4,000, for almost any purpose. It also works to promote saving and can provide a flexible savings account that you can access online or through an app.

Just like any bank it is regulated and authorised by the Financial Conduct Authority (FCA) and is a member of the Financial Services Compensation Scheme (FSCS), so your money is completely safe.

To access these services, you must first become a member of the credit union. You can find out more about these services and membership of the credit union by calling 01246 278833 or visiting: [www.cnedcu.co.uk](http://www.cnedcu.co.uk)

## Funding available to help homeowners service gas appliances

Older and vulnerable homeowners in Chesterfield could benefit from funding to help service their gas appliances.

The council was recently awarded an additional £7,000 from Foundations Independent Living Trust, which works in partnership with the Gas Safe Charity, to provide small grants for the servicing and repair of gas appliances in privately-owned properties.

The funding is available to homeowners on low income, who may not otherwise be able to afford to have their gas appliances serviced.

### Those eligible must live in privately-owned accommodation and:

- Have a low household income and/or a disability or
- Be considered exceptionally vulnerable by the council (you will need to provide a brief explanation)

Eligible residents can get financial help towards the cost of servicing gas appliances, like fires, cookers and heating systems in their homes. Funding can also pay for minor repair work which is needed to enable them to continue using gas appliances in their home safely.

Eligible residents can apply for funding by contacting the council's private housing team on 01246 345748 or [hia@chesterfield.gov.uk](mailto:hia@chesterfield.gov.uk).



## Chesterfield Area Walking Festival returns for 2022

The popular Chesterfield Walking Festival is returning for another year, with residents being encouraged to get outdoors and enjoy what the area has to offer.

The annual festival – taking place from Saturday 14 May to Sunday 22 May – is designed to get as many local people as possible going out for gentle strolls, family walks and hikes for those who are more experienced.

Councillor Jill Mannion-Brunt, cabinet member for health and wellbeing, said: “The festival really offers something for everyone to enjoy. We have so many beautiful countryside locations around Chesterfield, Bolsover and North East Derbyshire, so taking part in this event is a great way to explore some new places or visit your favourite locations with friends and family.”

There will be a variety of walks to take part in – including Big Hikes such as The Chesterfield Round, Bolsover Boundary Walk and Ogston and Ashover Circular.

Evening walks such as Railway, Rother and Return or Hidden Treasures, which give walkers an opportunity to find out some interesting stories from inside Spital Cemetery, will also be taking place.

This year there is also the opportunity to visit the museum store tour on Thursday 19 May as part of the Walking Festival. The Explore Chesterfield's Museum Collection event will be available to

attend from 11am to 12pm and will be a chance to explore the offsite store. Tickets are free but need to be booked in advance as space is limited.

If you fancy a waterside wander, you can combine a walk along the canal with a trip on a canal boat with the Boots and Boat walks.

Plus, if you have little ones, there are a range of family friendly walks such as the Queen's Park Buggy Walk. There are also a range of self-led walks available as part of the festival.

Last year's event was a huge success, with many more people embracing the outdoors due to the pandemic.

To ensure the festival can be delivered safely, there are a limited number of tickets available for each walk. **Please note that booking is essential and anyone who has not booked in advance may be turned away.**

To book your tickets for the festival: [www.chesterfieldwalkingfestival.co.uk](http://www.chesterfieldwalkingfestival.co.uk)

There are also many other self-led walks available in and around the borough, so these are also worth exploring: visit: [www.visitchesterfield.info/walking](http://www.visitchesterfield.info/walking)

# Contact us

We provide more than 50 services to our residents including: waste collection and recycling, street cleaning, leisure and park facilities, housing, environmental protection, planning, regeneration, housing, markets, theatres and tourism.

The answers to most of your queries will be available on our website: [www.chesterfield.gov.uk](http://www.chesterfield.gov.uk) and you can manage a range of council services through My Chesterfield (register at [www.chesterfield.gov.uk/mychesterfield](http://www.chesterfield.gov.uk/mychesterfield))

<b>General enquiries - (01246) 345345</b>
<b>For enquiries about specific services call:</b>
<b>Chesterfield Theatres box office</b>
(01246) 345222
<a href="mailto:box.office@chesterfield.gov.uk">box.office@chesterfield.gov.uk</a>
<b>Chesterfield Visitor Information Centre</b>
(01246) 345777 or 345778
<a href="mailto:tourism@chesterfield.gov.uk">tourism@chesterfield.gov.uk</a>
<b>Healthy Living Centre - (01246) 345666</b>
<a href="mailto:hlcenquiries@chesterfield.gov.uk">hlcenquiries@chesterfield.gov.uk</a>
<b>Queen's Park Sports Centre - (01246) 345555</b>
<a href="mailto:qpscenquiries@chesterfield.gov.uk">qpscenquiries@chesterfield.gov.uk</a>
<b>Chesterfield Citizen Advice - 0808 278 7843.</b>





<b>For housing related queries please call our main number (01246) 345345 except for:</b>
<b>Careline - 0300 303 3378</b>
<b>Homelessness prevention team - (01246) 345825</b>
<a href="mailto:homelessness.prevention@chesterfield.gov.uk">homelessness.prevention@chesterfield.gov.uk</a>
<b>Homelessness (out of hours) - 08081 629 333</b>
<b>Home Options - for all council house waiting list and allocations queries</b>
Visit the website at: <b><a href="http://www.home-options.org">www.home-options.org</a></b>
(01246) 345700
<a href="mailto:home.options@chesterfield.gov.uk">home.options@chesterfield.gov.uk</a>
<b>Neighbourhoods team - (01246) 345071</b>
<a href="mailto:neighbourhoods.team@chesterfield.gov.uk">neighbourhoods.team@chesterfield.gov.uk</a>
<b>Rents and rent recovery - (01246) 345501 or 345510</b>
<b>Reporting housing repairs - 0800 5875 659</b>
<a href="mailto:repair.requests@chesterfield.gov.uk">repair.requests@chesterfield.gov.uk</a>

<b>Emergency housing repairs - out of hours only</b>
(01246) 345041

If you can't find what you are looking for, you can fill in a contact form [www.chesterfield.gov.uk/contact](http://www.chesterfield.gov.uk/contact).

## Get the latest news

Follow us on:

-  @ChesterfieldBC
-  ChesterfieldBoroughCouncil
-  Chesterfield Borough Council
-  chesterfieldbc

See our videos on YouTube - search for Chesterfield Borough Council's channel.

## Are we accessible to you?

کیا ہم تک آپ کی رسائی ہے؟ اگر نہیں تو ہمیں بتائیے!

你可覺得易於與我們接觸？若不能的話，請提出要求。

Czy łatwo jest skontaktować się z nami? Jeżeli nie, powiedz nam o tym!

Siamo accessibili nei vostri riguardi? In caso contrario rivolgetevi a noi!

We aim to provide what you need to be able to understand our information or talk or write to us.

On request we will provide free of charge:

- Language interpreters, including for sign language
- Translation of written material into other languages
- Material in braille, large print and recorded onto CD.

### Please contact us:

General enquiries: 01246 345345  
Text: 07960 910264  
Web: [www.chesterfield.gov.uk](http://www.chesterfield.gov.uk)  
Email: [info@chesterfield.gov.uk](mailto:info@chesterfield.gov.uk)

# Help with your housing repairs

As a responsible landlord, we take all reports of faults in our properties seriously and aim to resolve any issues as quickly as possible.

We strongly encourage tenants to contact us if they have any repair issues they need to discuss, rather than starting a potentially costly legal process, known as a housing disrepair claim - a type of legal case that involves a tenant taking legal action against their landlord for failing to fix disrepair or damage on the rented property.

You can contact us by emailing: [repair.requests@chesterfield.gov.uk](mailto:repair.requests@chesterfield.gov.uk) or calling **0800 587 5659**. *In an emergency, you can also call 01246 345041 outside of office hours.*

Although we will always do our best to resolve any issues as soon as possible, we understand that there may be times when you feel frustrated. If this is the case, you can talk to the Derbyshire Law Centre about your repair claims.

Derbyshire Law Centre offers a Housing Repair Support service for private and social housing tenants, with solicitors that specialise in housing law. Derbyshire Law Centre also has a Legal Aid contract in housing, something most other legal firms doing disrepair claims will not have.

Derbyshire Law Centre will work with the council on your behalf to look into your repairs claim. The team will be able to advise you on what the council is responsible for and aim to get any work done as soon as possible.

Other legal firms who take up disrepair claims on behalf of tenants often take a considerable amount of any compensation to cover their costs and in some cases their work can potentially actually cost the tenant. It may also put your tenancy at risk. Derbyshire Law Centre will pick up your repairs complaint with Chesterfield Borough Council at no cost to you.

You can contact the team to discuss your repair issues by calling 01246 550674 / 0800 707 699 or emailing [dlc@derbyshirelawcentre.org.uk](mailto:dlc@derbyshirelawcentre.org.uk)

# Be in the know about dog breeding

The pandemic has seen more people than ever spending time at home and more people looking to purchase a puppy.



Photo by Lydia Tarrey on Unsplash

The demand for dogs over the last couple of years has pushed the price of buying a puppy up, meaning that unfortunately inexperienced individuals set out to make a profit without the correct care for the dogs in mind.

We're receiving increased numbers of complaints in relation to dog breeding. If you're looking to adopt a dog, please consider rehoming a rescue animal in need of a home first. If you do use a breeder, please only approach those with a licence.

The Animal Welfare (Licensing of Activities Involving Animals) Regulations 2018, requires anyone breeding three or more litters of puppies in any 12-month period; breeding dogs in general or running a business selling and advertising dogs, to be licensed.

Even if you are in receipt of a trading income (not profit) of £1,000 or more from this activity, you will need a licence regardless of the number of breeding bitches or litters of puppies you have. This could mean even if you are having one litter you may need a licence.

If you are looking to buy a puppy from a licensed breeder, it is also worth considering Lucy's Law, that became law in 2020, which requires licensed dog breeders to show puppies interacting with their mothers in their place of birth.

The licensing of dog breeding protects the welfare of the mum and her pups, and council officers carry out spot checks and inspections to ensure standards are maintained.



# Report it on the move

Sign up to My Chesterfield today.



*Report it when you see it.*

- Tell us about something that needs cleaning up on a street, road or in your park
- Report an issue that's affecting you, such as noise or smoke
- Mark the location on the map and upload a photo – we'll notify our teams to get it sorted!



It's quick and easy to sign up – scan the QR code or visit the website:

[www.chesterfield.gov.uk/mychesterfield](http://www.chesterfield.gov.uk/mychesterfield)



**CHESTERFIELD**  
BOROUGH COUNCIL