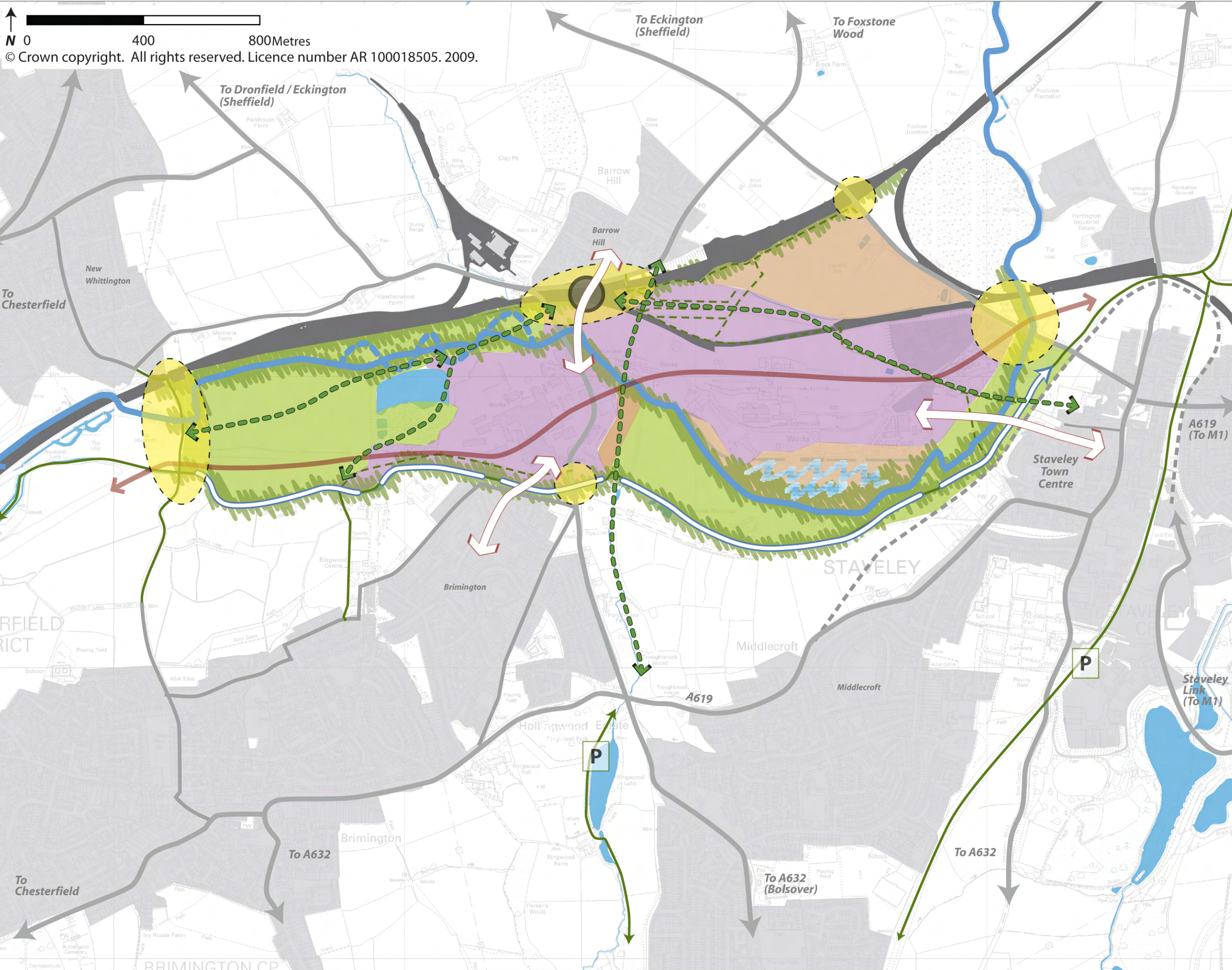


© Crown copyright. All rights reserved. Licence number AR 100018505. 2009.



- Key**
- existing road network
 - existing railway network
 - proposed route
 - existing main connections (pedestrian & cycle routes)
 - existing tertiary route (pedestrian route only)
 - existing watercourse
 - parking areas associated with walking trails
 - potential gateway areas
 - potential for new main vehicular access (indicative location)
 - potential to reinstate the river's natural course
 - potential for new water / wetlands
 - potential to create varying canal character areas
 - Canal extension
 - potential for development in a landscape setting
 - various green developments with potential for formal recreation
 - potential to strengthen and develop natural landscape environments limited to informal recreation
 - potential for strong cycle / pedestrian connections
 - potential to strengthen connectivity
 - potential to retain / strengthen ecological value
 - potential new local station

STAVELEY AREA ACTION PLAN

OPPORTUNITIES

Date: April 2009
Reviewed by: SA

job	drawing	rev
4455	10.2	A

taylor youngty
chadsworth house
wilmslow road
handforth
cheshire
sk9 3hp

tel: 01625 542 200
fax: 01625 542 250
mail: taylor@youngty.co.uk
www.tayloryoungty.co.uk

- architecture
- graphics
- healthcare planning
- interior design
- landscape architecture
- regeneration
- town planning
- urban design
- 3D visualisation

