

LOCAL CENTRES SURVEY



JUNE 2011

CHESTERFIELD BOROUGH COUNCIL

ARE WE ACCESSIBLE TO YOU? IF NOT ASK US!

کیا ہم تک آپ کی رسائی ہے؟ اگر نہیں تو ہمیں بتائیے!

你可覺得易於與我們接觸？若不的話，請提出要求。

Czy łatwo jest skontaktować się z nami? Jeżeli nie, powiedz nam o tym!

Siamo accessibili nei vostri riguardi? In caso contrario rivolgetevi a noi!

- We want everyone to be able to understand us.
- We want everyone to be able to read our written materials.
- We are committed to breaking down communication barriers to enable you to read and talk and write to us.
 - **On request we will provide free:**
 - ✓ Language interpreters, including for sign language.
 - ✓ Translations of written materials into other languages.
 - ✓ Materials in large print, on tape or in braille.

Please contact us –

Planning	01246 345811
General enquiries	01246 345345
Mobile text phone	079609 10264
Fax	01246 345252

- 我們想人人能夠明白我們。
- 我們想人人能夠讀給我們聽、與我們交談和寫信給我們。
- 若有提出要求，我們將會免費提供：* 語言傳譯，包括手語傳譯 * 翻譯成其他語言 * 以盲人點字、大字體印刷及錄音帶供給訊息。

• ہم ہر شخص کو ہر قسم کی زبان سے بات کرنے میں مددگار ہوں گے۔
• ہم ہر شخص کو ہر قسم کی زبان سے بات کرنے میں مددگار ہوں گے۔
• ہمارا مقصد ہے کہ ہر شخص کو ہر قسم کی زبان سے بات کرنے میں مددگار ہوں گے۔
• ہمارا مقصد ہے کہ ہر شخص کو ہر قسم کی زبان سے بات کرنے میں مددگار ہوں گے۔

請與我們聯絡

請翻閱

請與我們聯絡 –

一般查詢	01246 345345	手播傳文	079609 10264	079609 10264	سرائیل گیسٹ ہاؤس	01246 345345
傳真	01246 345252	環境查詢	01246 345734	01246 345734	بازار کے مختلف مراکز	01246 345252
房屋查詢	01246 345177	文康設施	01246 345096	01246 345096	تورنگی سرگرمیوں کے مراکز	01246 345177

PARA	CONTENTS	PAGE
1.0	Introduction	4
2.0	Purpose	5
3.0	Approach and Methodology	5
4.0	Assessment of Local Centres	6
5.0	Existing Facilities in Local Centres	7
6.0	Conclusions	8
7.0	Further Information	8
Appendix 1	Local Centres Assessment and Maps	9

1.0 Introduction

- 1.1 Chesterfield Borough Council (CBC) is replacing its current Replacement Local Plan, adopted in 2006, with the Chesterfield Local Development Framework (LDF). The LDF will consider development and infrastructure requirements over the period to 2026. The basis of the LDF's policies and proposals will be a thorough understanding of the needs, opportunities and constraints in the area. The development of this "evidence base" is a priority set out in Chesterfield Borough Council's Local Development Scheme 3. This Local Centres Survey is a key element of this process.
- 1.2 PPS 4 Planning for Sustainable Economic Growth (2009) Policy EC3: 'Planning for centres' states that local planning authorities should set out a strategy for the management and growth of centres over the plan period. This strategy should define a network (the pattern of provision of centres) and hierarchy (the role and relationship of centres in the network) of centres that is resilient to anticipated future economic changes, to meet the needs of their catchments having:
- made choices about which centres will accommodate any identified need for growth in town centre uses, considering their expansion where necessary and taking into account the need to avoid an over-concentration of growth in centres.
 - where existing centres are in decline, considered the scope for consolidating and strengthening these centres by seeking to focus a wider range of services there, promoting the diversification of uses and improving the environment
- 1.3 This Local Centres Survey is intended to define the current network of centres in the borough and provide a snapshot of the facilities and services available in each centre. This will enable a hierarchy of centres to be produced which ranks centres according to their size and range of services and facilities and their possible capacity to support growth. The hierarchy of centres will be set out in the Core Strategy, the key document on the Local Development Framework.
- 1.4 The hierarchy of centres gives the Core Strategy a better chance to direct and manage change by making planning policy more proactive. By identifying centres and their position in the hierarchy we can take advantage of the potential to promote change through the planning system, to strengthen the role and function of our centres.

2.0 Purpose

- 2.1 The purpose of this survey is to identify and map facilities and services currently available within each local centre within Chesterfield Borough, so providing an evidence base for Chesterfield Borough Council's Local Development Framework.
- 2.2 This survey identifies the current provision and range of facilities in each of the borough's Local Centres. It does not provide detailed information on facilities such as capacity or condition of building.

3.0 Approach and methodology

- 3.1 The local centre hierarchy has been formulated considering a number of factors following a specific methodology. The methodology involved site visits to each of the local centres, noting which services and facilities were contained in each unit within the boundary of the local centre as defined in the Replacement Chesterfield Borough Council Local Plan Adopted 2006. In cases where the local centre was believed to have expanded, with the provision of further services and facilities, or diminished through their loss, this was noted within the assessment of the local centre.
- 3.2 The information gathered was mapped on the council's GIS system and data is also held in table form. Maps have been produced for each local centre showing what variety of services and facilities are provided. The categories given to the range of services and facilities are as follows:
- Bus Routes
 - Bus Stops
 - Health and Community Facilities
 - Residential Dwellings
 - Specific Retail and Services (*specialist retail units that sell specialist goods and services*)
 - Public Houses
 - Post Offices
 - Hair and Beauty Salons
 - General Stores
 - Restaurant / Takeaway / Food Providers (*cafes, restaurants, takeaways, delis or specific caterers*)
 - Doctors
 - Dentists
 - Library
 - Vacant Units

4.0 Assessment of Local Centres

- 4.1 The assessment of local centres has identified different types of local centre having differing functions and characteristics. A summary of these results can be found in section 5.0 Hierarchy of Local Centres and a full assessment of each centre can be viewed in Appendix 1. The following terms have been used:

Local Service Centre – has a strong provision of services and facilities, strong sustainable transport links. These give the existing centre the capacity to support growth and potentially to serve an even wider catchment population. The term ‘Local Service Centre’ is used in PPS4 in relation to rural areas (EC6.2) and is considered an appropriate term to describe the largest and best-served local centres in the borough.

Local Centre – provides a variety of services and facilities. It also has a larger catchment population than its immediate neighbourhood, but may not have the capacity and range of services for supporting further local growth.

Neighbourhood Centre – a local centre that provides small scale local convenience shops, services and amenities for its immediate area.

Hierarchy of Local Centres
Local Service Centre
Brimington
Hasland
Holme Hall
Local Centres
Abercrombie
Littlemoor
New Whittington
Newbold
Old Whittington
Neighbourhood Centres
Birdholme
Brookside
Donkins/Derby Road (Trevorrow Cr.)
Grangewood
Inkersall Green
Loundsley Green
Walton

5.0 Existing Facilities in Local Centres (as defined in Replacement Local Plan in 2006)

Survey as of June 2011

		Criteria											No. of Occupied Units + Vacant Units	Total Criteria ✓	
		Health and Community Facilities	Specific Retail and Services	Public Houses	Post Office	Pharmacy	Hair and Beauty Salons	General Store	Restaurant/ Takeaway /Provider	Doctors	Dentist	Library			Bus Stops / Bus Route
Local Centre	Abercrombie		✓				✓	✓	✓				✓	13	5
	Birdholme		✓				✓	✓	✓				✓	10	5
	Brimington	✓	✓	✓	✓	✓	✓	✓	✓	✓		✓	✓	44	11
	Brookside		✓		✓	✓		✓	✓				✓	5	6
	Donkins/Derby Road (Trevorrow Cr.)		✓					✓	✓					3+1	3
	Grangewood					✓				✓			✓	2	3
	Hasland	✓	✓	✓	✓	✓	✓	✓	✓				✓	45	9
	Holme Hall	✓			✓	✓	✓	✓	✓	✓	✓		✓	11	9
	Inkersall Green		✓		✓	✓	✓	✓	✓				✓	6	7
	Littlemoor		✓				✓	✓	✓				✓	8	5
	Loundsley Green	✓	✓		✓		✓	✓	✓				✓	10	7
	New Whittington		✓	✓	✓	✓	✓	✓	✓				✓	15+4	8
	Newbold	✓	✓				✓	✓	✓				✓	12	6
	Old Whittington		✓		✓	✓	✓	✓	✓				✓	9+1	7
	Walton				✓		✓	✓	✓				✓	4+1	5

Local Service Centre	
Local Centre	
Neighbourhood Centre	

6.0 Conclusions

- 6.1 The Local Centres Survey has shown there to be three main types of Local Centre within Chesterfield borough, called in this study Local Service Centres, Local Centres and Neighbourhood Centres. The table in section 5 above shows how the 15 Local Centres in the borough are distributed across the three categories according to the type and variety of facilities on offer, the size of the centre and the number of vacant units within the centre.
- 6.2 As a result of the survey, 3 'Local Service Centres' have been identified at Brimington, Hasland and Holme Hall, which all demonstrate a strong provision of services and facilities, strong sustainable transport links and the potential to support growth within the centre and to meet the needs of an increasing catchment population. All are shown to be viable as units were all fully occupied and in use at the date of survey.
- 6.3 The survey highlights the 5 'Local Centres' at New Whittington, Old Whittington, Newbold, Abercrombie and Littlemoor, each of which provides a variety of services and facilities, has a large catchment currently, but may not be suitable for supporting further local growth. The range of services and facilities is not as wide as those found within the Local Service Centres. New Whittington in size terms had potential to be identified as a Local Service Centre but due to its limited catchment and increasing number of vacant units, the status of a Local Service Centre was not considered appropriate at the current time.
- 6.4 7 'Neighbourhood Centres' have been identified as Inkersall Green, Loundsley Green, Brookside, Birdholme, Walton, Grangewood and Donkins/ Derby Road. These centres are a mixture of old and new but are all centres that provide small scale local convenience shopping and amenity services.
- 6.5 The survey work carried out is a snapshot of the 'on the ground' situation of the Local Centres within Chesterfield borough as of June 2011. The picture is likely to be ever-changing with different circumstances having differing effects across the borough.
- 6.6 The intention is to update the study on a regular basis to understand the changing nature and health of these centres. Local Centre boundaries are to be reviewed as part of the Sites and Boundaries DPD process, which could lead to the boundaries of these centres being expanded, reduced or left as they are in order to reflect the variety, offer and size of the centres.

7.0 Further Information

For any questions or information please contact:

Name	Telephone	E-Mail
Alan Siviter	01246 345954	alan.siviter@chesterfield.gov.uk
Lauren Dempsey	01246 345794	lauren.dempsey@chesterfield.gov.uk
Richard Bryant	01246 345790	richard.bryant@chesterfield.gov.uk

Appendix 1

Local Centres Assessment and Maps

Abercrombie Local Centre

- Local Centre
- Based along frontage of Newbold Road
- Nature of the local centre suggests that it caters for local residents and passing footfall trade.
- Local centre currently provides a variety of services
 - **1 General Store**
 - **5 Food Restaurant / Takeaways / Providers**
 - **3 Hair and Beauty Salons**
 - **4 Specific Retail and Services Units**
- Within the local centre there are 4 Residential units
- An expansion of the local centre has occurred with four units along the frontage of Newbold Road providing a dentist, an optician, a Food Restaurant / Takeaways / Provider and a Specific Retail and Service unit.
- Opposite the local centre are two public houses.
- The local centre is 160 metres away from Chesterfield Town Centre

Local Centre Bus Services

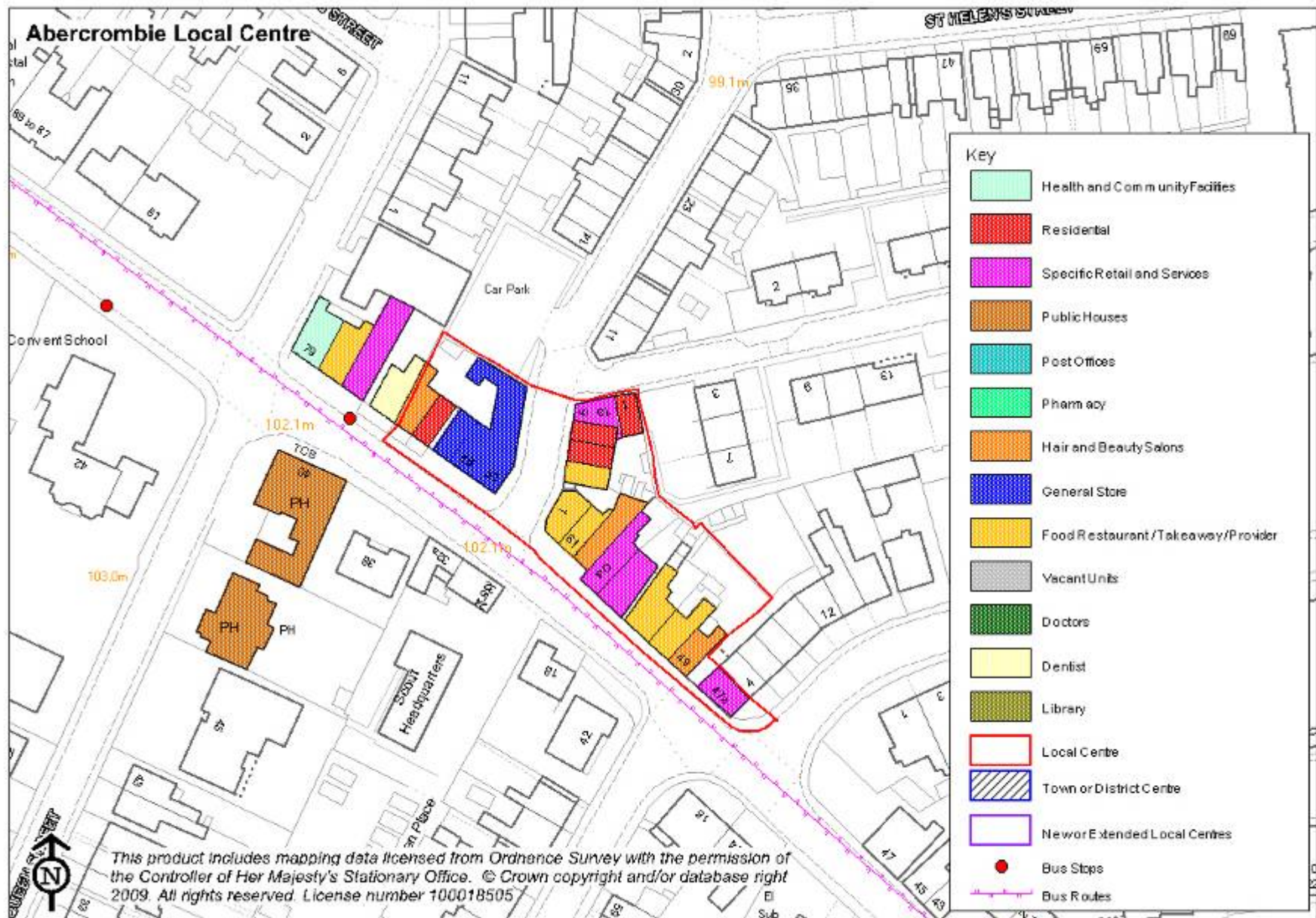


Monday – Friday after 9am

Bus Service	Frequency	Other Comments
10	6 per hour	
5	2 per hour	
170	1 per hour	From 23 rd July 2011 service to be withdrawn

Conclusions

This local centre appears well-used and viable at the moment, probably not in need of additional new population locally to boost trade. Due to proximity of Chesterfield Town Centre with its wide range of services, further expansion of this local centre would not be necessary. A possible redrawing of the boundary would pick up adjoining units and facilities which already exist.



Birdholme Local Centre

Neighbourhood Centre

Based along the A61/Derby Road the southern approach into Chesterfield Town Centre.

Local centre mostly caters for local residents only and retail and services are limited.

Currently provided are:

- **1 General Store**
- **3 Food Restaurant / Takeaways / Providers**
- **3 Hair and Beauty Salons**
- **3 Specific Retail and Services Units**

Within the local centre there are 23 residential units.

There are currently no vacant units within the local centre

A post office is 60 metres south of the local centre, a public house and a Tesco Extra store is within 250 metres of the local centre, a hair and beauty salon is just outside the boundary of the local centre.

Chesterfield Town Centre is approximately 1,400 metres away.

Local Centre Bus Services



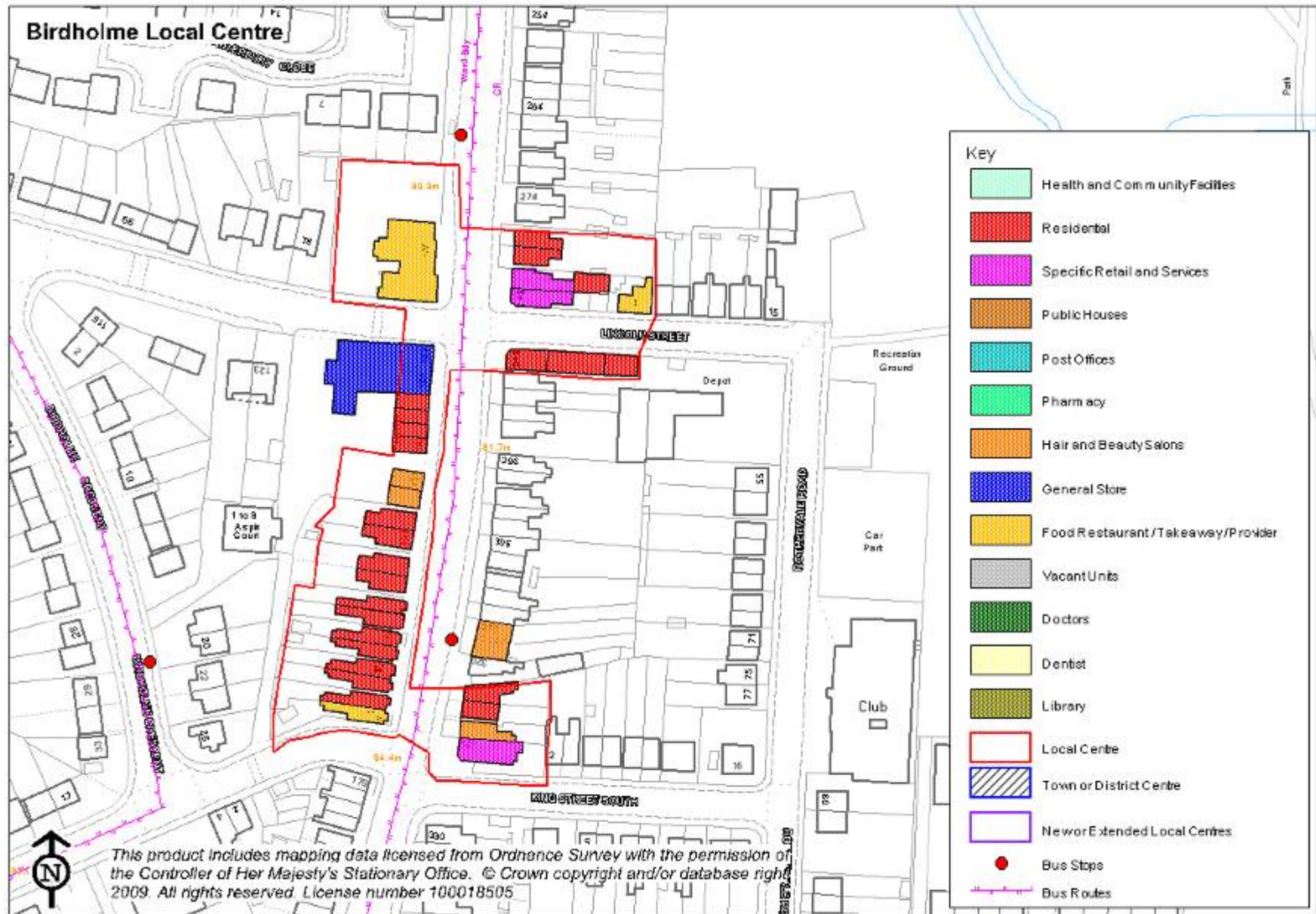
Monday – Friday after 9am

Bus Service	Frequency	Other Comments
6	3 every 2 hours	
51	5 per hour	
97	1 per hour	
98	1 per hour	
Red Arrow	2 per hour	

Conclusion

As defined in the 2006 Replacement Local Plan, Birdholme Local Centre only makes provision for its immediate neighbourhood. There is a wider offer of local convenience shopping and services locally, however, within a sustainable distance of most residents. This arises from proximity of the Grangewood and Donkins/Derby Road local centres and opening of a medical centre off Stubbing Road and conversion of 'The Angel' pub on Derby Road into a general store. These developments address some of the gaps in provision.

The local centre is sustainably located with its connections to other centres along a variety of bus routes.



Brimington Local Centre

Local Service Centre.

Based on Church Street, Hall Road, Ringwood Road and High Street. Located on the A619 between Chesterfield and Worksop.

Large catchment area, providing for local residents and people based in Hollingwood and Brimington Common.

The facilities currently provided within local centre are:

- **9 Health and Community Facilities**
- **11 Specific Retail and Services**
- **5 Public Houses**
- **1 Post Office**
- **1 Pharmacy**
- **5 Hair and Beauty Units**
- **3 General Stores**
- **7 Food Restaurant / Takeaway / Provider**
- **1 Doctors Surgeries**
- **1 Library**

Within the local centre there are 33 residential units

There are 4 vacant units within the local centre boundary.

Chesterfield Town Centre is located 3,500m away, Whittington Moor is 2,500 m away and Staveley Town Centre is 2,900m away.

Local Centre Bus Services



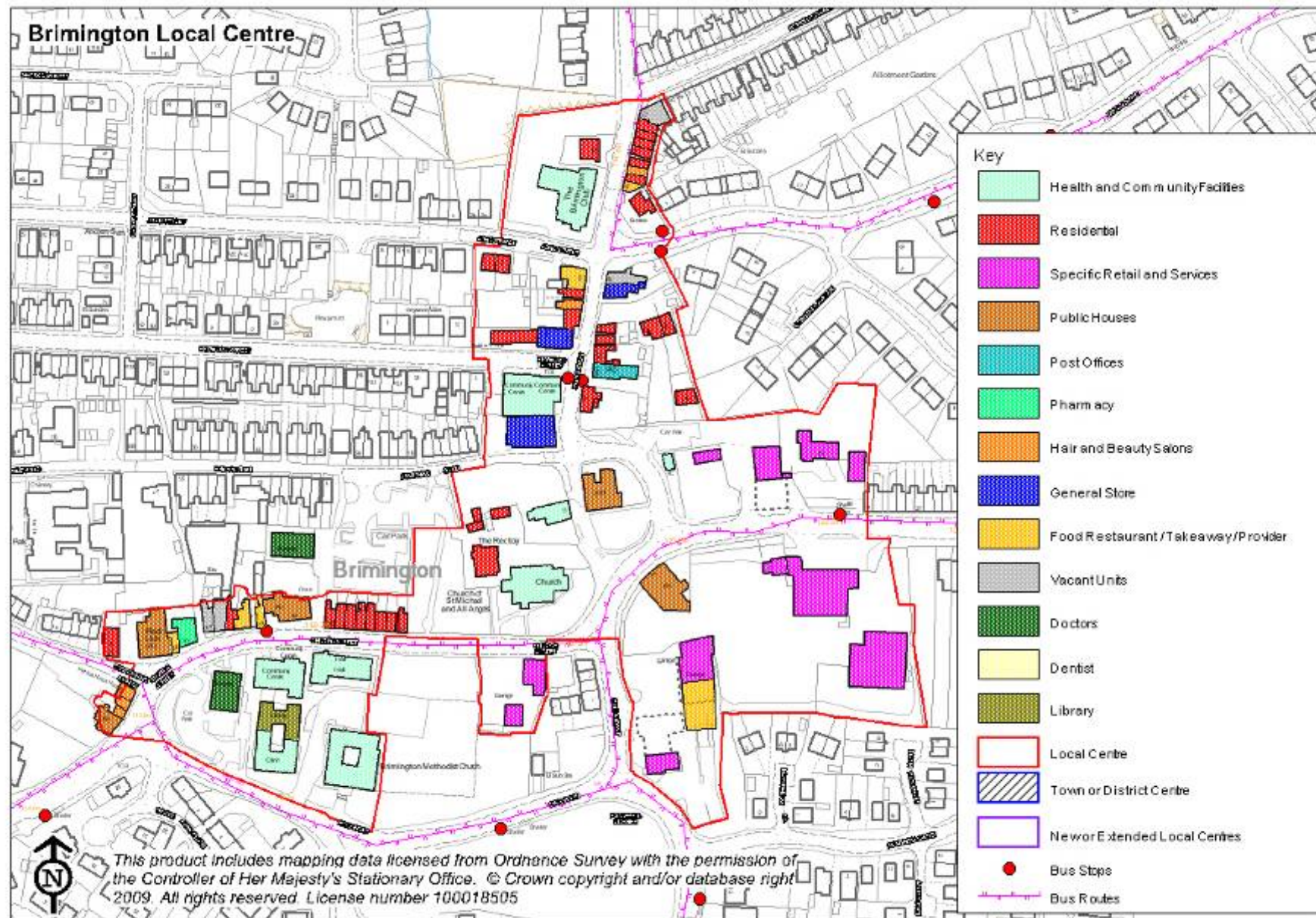
Monday – Friday after 9am

Bus Service	Frequency	Other Comments
33	1 per hour	From 23 rd July 2011 service to be withdrawn
70/71	2 per hour	
74	2 per hour	
77	2 per hour	
78	2 per 3 hours	
80	2 per hour	
90	2 per hour	

Conclusion

Brimington is a large, sustainable local centre. It has a wide mix and provision of services and facilities and is well served by 6 bus routes that run at an hour or better. As a stand alone centre its vitality is strong and there are strong sustainable links to the larger district

and town centres which are all more than 2km away. As a local centre Brimington is capable of sustaining further users of services and facilities.



Brookside Local Centre

Neighbourhood Centre located in the west of the borough on Chatsworth Road.

Catchment is local residents and some passing trade.

The facilities currently provided within the local centre are:

- **1 General Store**
- **1 Post Office**
- **1 Pharmacy**
- **1 Specific Retail or Services**
- **1 Food Restaurant / Takeaway / Provider**

There are currently no vacant units

The local centre contains 3 residential dwellings.

Brookside Local Centre is located 800 metres away from Chatsworth Road District Centre and 2000 metres from Chesterfield Town Centre.

Local Centre Bus Services



Monday – Friday after 9am

Bus Service	Frequency	Other Comments
50/50A	2 per hour	
66/66A	1 every 2 hours	

Conclusion

Brookside is a small local centre with no scope for expansion of the facilities and services that are already provided for. The centre is served by three bus routes that provide a variety of levels of frequency that serve the local centre. It should be noted that there is a doctors surgery 50 metres away from the local centre that serves the local community. The service provision within the local centre (as currently defined) is general in nature and provides a level of local convenience shopping.



Donkins / Derby Road (Trevorrow Cr.) Local Centre

Donkins/ Derby Road Local Centre is a designation from the Replacement Chesterfield Borough Council Local Plan (adopted 2006) the relevant policy is SHC 2 Provision of New or Extended Local Centres. The local centre is based within a development that was completed 1-2 years ago.

Neighbourhood Centre is located on Trevorrow Crescent and Horse Chestnut Close.

The facilities currently provided in the local centre are:

- **1 General Store**
- **1 Food Restaurant / Takeaway / Provider**
- **1 Specific Retail and Services**

There was 1 vacant unit within the local centre at the date of survey, which is expected to be occupied by a hairdresser from the 1st July 2011.

The Donkins/Derby Road Local Centre is 850 metres away from Chesterfield Town Centre.

No buses run through the local centre at the moment.

The 97, 98, 51, 6 and Red Arrow run hourly or better services that run close to the site.

Conclusion

This is a considerable new local centre that is still establishing itself in the area. The catchment is mainly the new residents of the development and all the units are expected to be fully utilised once all residential units within the development are occupied. A 2nd phase of the residential development has permission on a neighbouring site and will increase the catchment of the centre.

There is a wider offer of local convenience shopping and services locally, however, within a sustainable distance of most residents. This arises from proximity of the Grangewood and Birdholme local centres and opening of a medical centre off Stubbing Road and conversion of 'The Angel' pub on Derby Road into a general store. These developments address some of the gaps in provision.

Currently there seems limited need for further expansion of the local centre due to the proximity of the town centre and non-utilisation of all units. Although no bus routes currently serve the local centre it is still regarded as sustainable due to the walking distance of the development from a variety of services and the availability of bus services nearby.



Grangewood Local Centre

Identified as a Neighbourhood Centre

Grangewood Local Centre is a designation from the Replacement Chesterfield Borough Council Local Plan (adopted 2006) the relevant policy is SHC 2 Provision of New or Extended Local Centres.

The centre is located on Stubbing Road and is to the rear of The Trumpeter Public House.

The current facilities provided in the local centre are:

- **1 Doctors Surgery**
- **1 Pharmacy**

There is a general store located within the Grangewood estate currently located on Church Street South, also to the rear of the health centre is the Trumpeter Public House.

The Grangewood Local Centre is 2,100 metres away from Chesterfield Town Centre.

Local Centre Bus Services



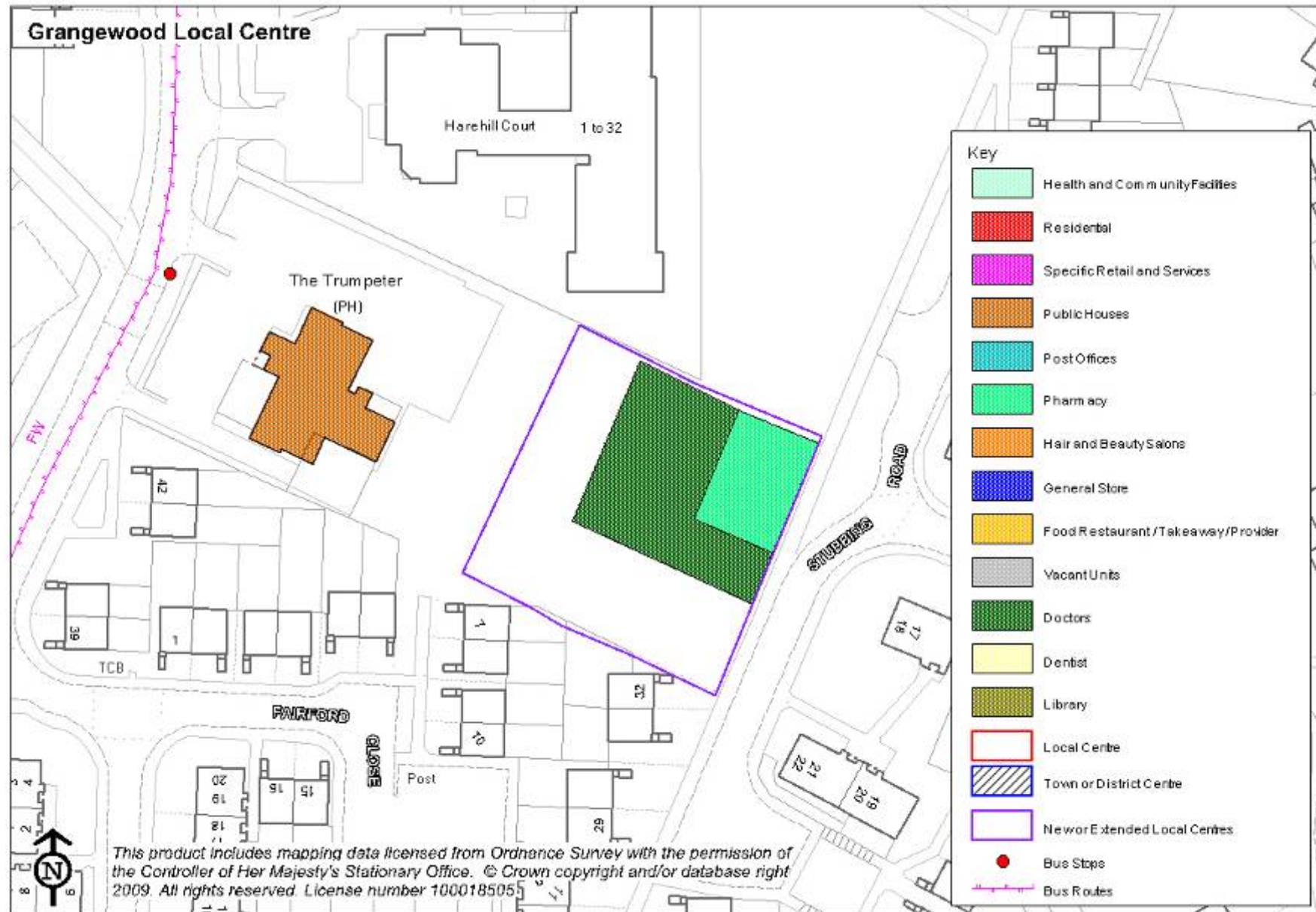
Monday – Friday after 9am

Bus Service	Frequency	Other Comments
39	7/8 per hour	

Conclusion

The Grangewood estate has been underserved by local facilities for a long period of time, however the provision of a health centre should provide a local service to a large catchment.

Further to this there is a wider offer of local convenience shopping and services locally within a sustainable distance of most residents. This arises from proximity of the Birdholme and Donkins/Derby Road local centres the conversion of 'The Angel' pub on Derby Road into a general store. These developments address some of the gaps in provision. Further local needs can be satisfied in the shops and services within Chesterfield Town Centre which is well served by a frequent bus service.



Hasland Local Centre

Hasland is a Local Service Centre in the south of the borough based along Mansfield Road and The Green.

The catchment for Hasland is large, since it has the scope to pick up service and facility users from Spital, Hady, Calow and Birdholme.

The facilities within Hasland Local Centre include:

- **2 Health and Community Facilities**
- **20 Specific retail and services**
- **2 Public Houses**
- **1 Post Office**
- **1 Pharmacy**
- **4 Hair and Beauty Salons**
- **4 General Stores**
- **11 Food Restaurants / Takeaways / Providers**

There were no vacant units within Hasland Local Centre at the time of the survey.

There are 9 residential dwellings within the local centre.

Hasland Local Centre is 1,900 metres away from Chesterfield Town Centre.

Local Centre Bus Services

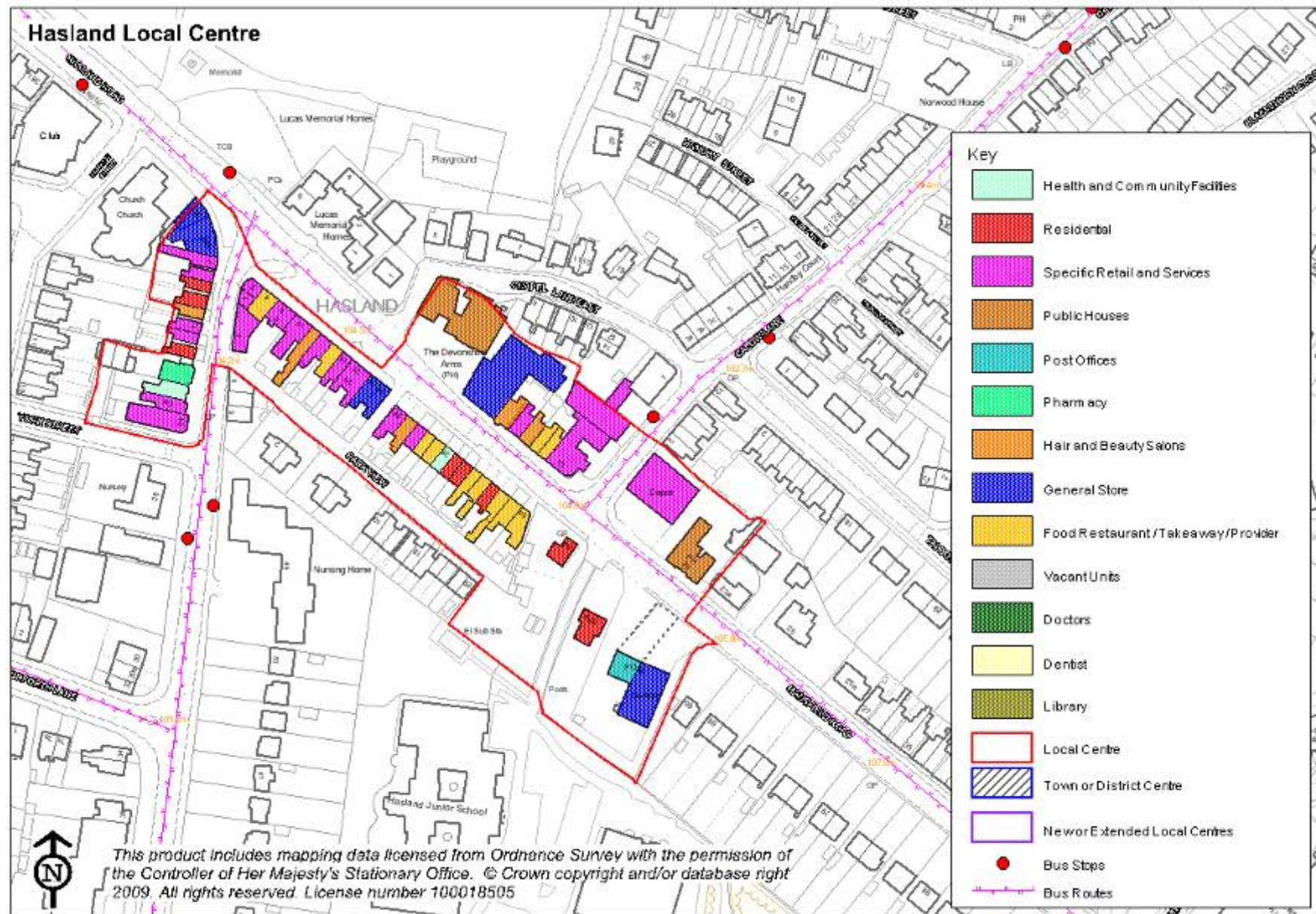


Monday – Friday after 9am

Bus Service	Frequency	Other Comments
6	2 per hour	
54	6 per hour	
78	2 every 3 hours	
96	1 per hour	
119	5 per day	
PRONTO	2 per hour	

Conclusion

Hasland is one of the most prosperous local centres in Chesterfield, providing a good variety of services and facilities not only for local residents from Hasland, but also those from neighbouring settlements such as Calow, Spital and Hady. The centre is seen as being locally sustainable with services and facilities going beyond local convenience level. 7 bus routes serve Hasland with good frequency from and to Chesterfield Town Centre and go as far as Mansfield and Alfreton. Hasland Local Centre is considered to be sustainable and has the vitality to cope with additional customers.



Holme Hall Local Centre

Holme Hall is a Local Service Centre which was created in the late 1980s to support the new-build housing development at the Holme Hall Estate.

The catchment for the centre currently is the Holme Hall Housing Estate.

It is located off Wardgate Way in the centre of Holme Hall Estate.

The facilities currently located within the local centre are:

- **2 General Stores**
- **1 Hair and Beauty Salon**
- **1 Post Office**
- **3 Food Restaurant / Takeaways/ Providers**
- **1 Pharmacy**
- **1 Doctors Surgery**
- **1 Dental Surgery**
- **1 Health and Community Facility**

There are no residential dwellings or vacant units within the local centre

Holme Hall Local Centre is 3,900 metres from Chesterfield Town Centre and 3,200 metres from the Chatsworth Road District Centre.

Local Centre Bus Services



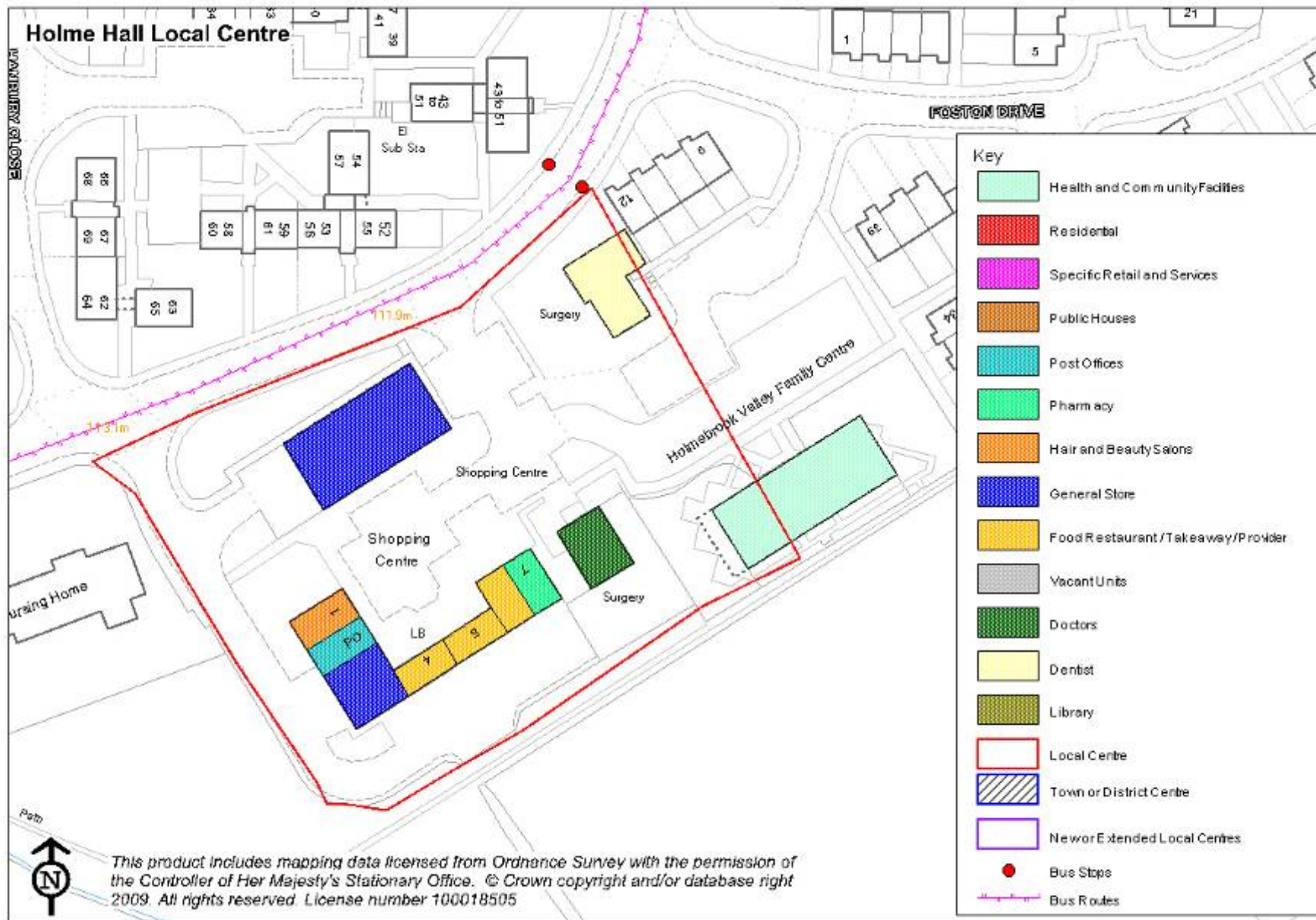
Monday – Friday after 9am

Bus Service	Frequency	Other Comments
33	1 per hour	From 23 rd July 2011 service to be withdrawn
39	7/8 per hour	
170	1 per hour	

Conclusion

Holme Hall is a sustainable local centre. Its variety of facilities and services are some of the strongest within the borough. Though Holme Hall is located a considerable distance from the Chesterfield Town Centre and the district centre at Chatsworth Road, its connectivity is strong, particularly with the town centre. Ten buses an hour run through the Holme Hall Estate and close to the local centre. Local need for services and facilities is well served by what is provided currently.

Holme Hall is seen as a sustainable local centre and has the vitality to cope with potential local growth. There is also the potential to expand the local centre itself.



Inkersall Green Local Centre

Inkersall Green is a Neighbourhood Centre that serves Inkersall Green and Middlecroft.

It is based around Summerskill Green, Atlee Road, Hillman Drive and Sutton Crescent. The local centre is set back from the road island of Summerskill Green and provides car parking to the front and rear of the parade.

The facilities of the local centre currently include:

- **1 General Store**
- **1 Specific Retail and Services**
- **1 Hair and Beauty Salon**
- **1 Post Office**
- **1 Pharmacy**
- **1 Food Restaurant / Takeaway / Provider**

There are no residential dwellings or vacant units within the local centre

Inkersall Green Local Centre is 2,000 metres away for Staveley Town Centre and 6,200 metres away from Chesterfield Town Centre.

Local Centre Bus Services



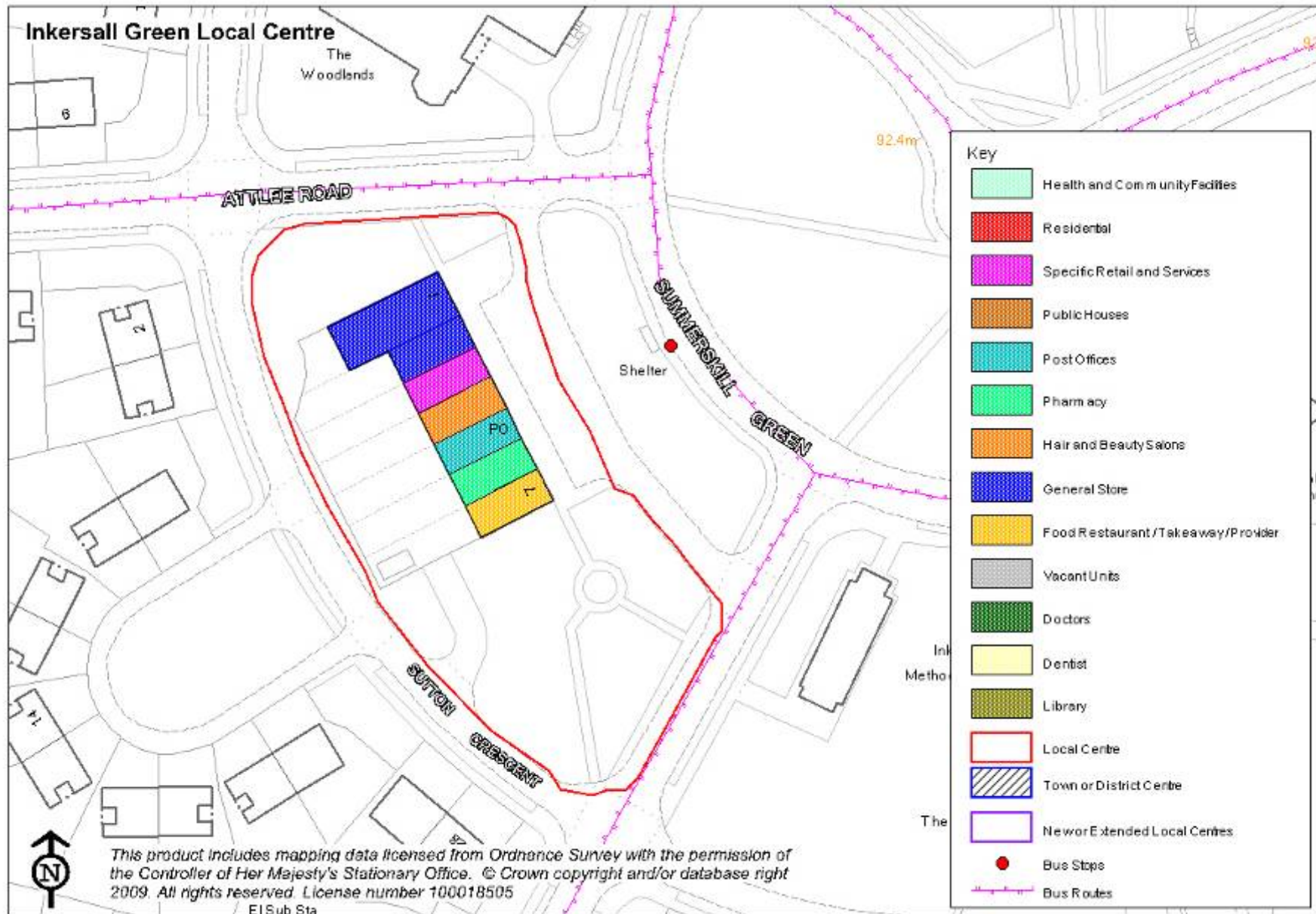
Monday – Friday after 9am

Bus Service	Frequency	Other Comments
74	2 per hour	
80	2 per hour	

Conclusion

Inkersall Green is a sustainable local centre that serves residents of both Inkersall Green and Middlecroft. The local centre is linked by the bus network to Chesterfield Town Centre and Staveley Town Centre and even Worksop. The vitality of the local centre is strong with no vacant units on the parade. Located close to the local centre is a public house.

The centre supplies local convenience shopping and services for residents of both Inkersall Green and Middlecroft. This centre appears well-used and viable at the moment, probably not in need of additional new population locally to boost trade. Due to proximity of Staveley Town Centre with its wider range of services, further expansion of this local centre would not be necessary. A possible redrawing of the boundary would pick up adjoining units and facilities which already exist.



Littlemoor Local Centre

Littlemoor is a local centre in Newbold, located only 500 metres away from Newbold Local Centre.

Its catchment is Newbold and areas adjoining Peveril Road and parts of Whittington Moor, it provides a mix of local convenience with 5 or 6 units with one large specific retail unit in the form of a car accessories shop that could act as an attractor to people from further a field.

The centre is based on Littlemoor and St Johns Road, the local centre has car parking and recycling facilities on the frontage.

The facilities currently located within the local centre are:

- **1 General Store**
- **5 Specific Retail and Services**
- **1 Food Restaurant / Takeaway / Provider**
- **1 Hair and Beauty Salon**

Outside the local centre there is a public house, doctors and dentists surgery within 80 metres of the local centre boundary.

There are residential dwellings located above the ground floor level.

There are no vacant units within the local centre.

Littlemoor Local Centre is 2,400 metres away from Chesterfield Town Centre and 1,300 metres away from Whittington Moor District Centre.

Local Centre Bus Services

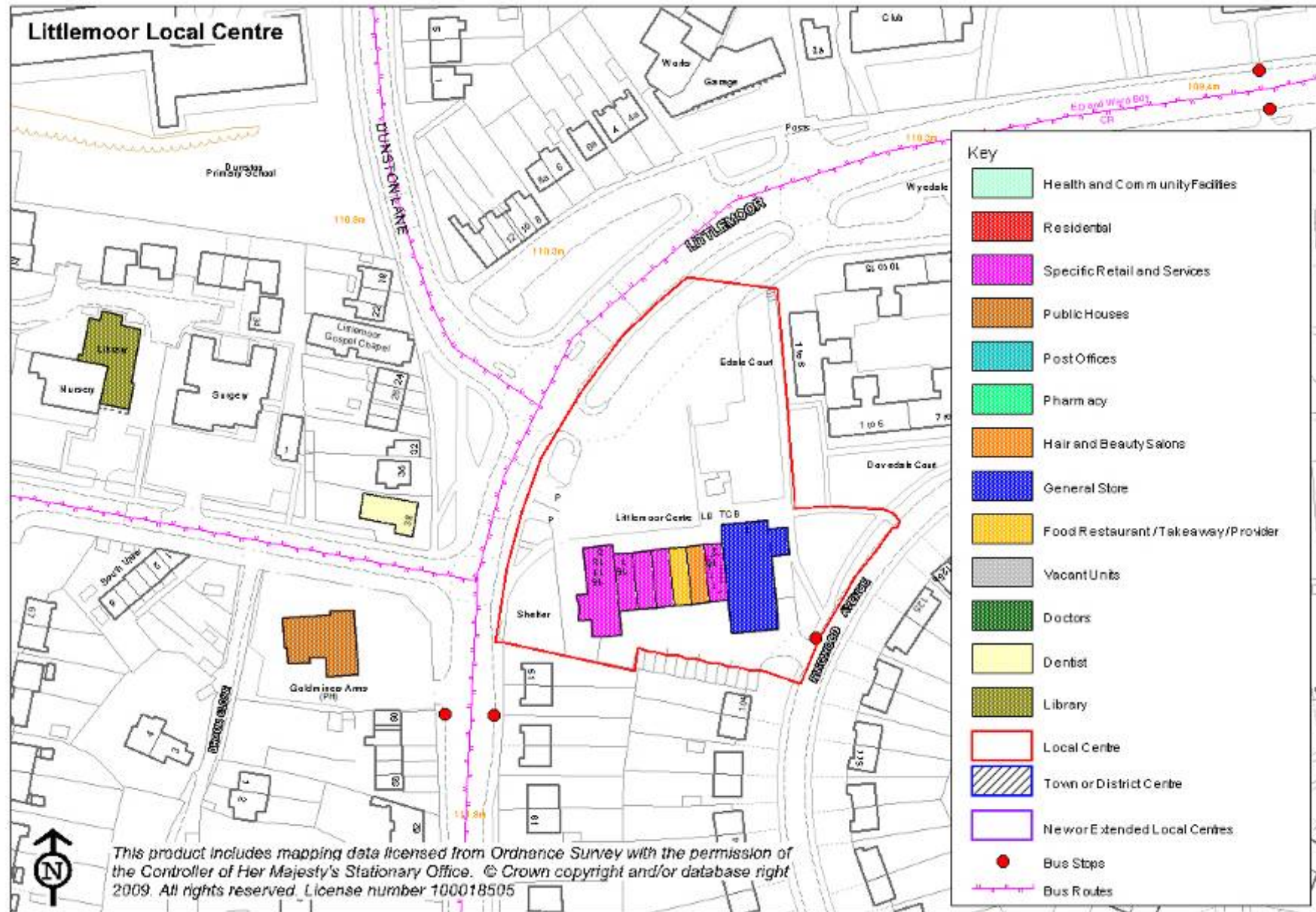


Monday – Friday after 9am

Bus Service	Frequency	Other Comments
10	6 per hour	
33	1 per hour	From 23 rd July 2011 service to be withdrawn

Conclusion

Littlemoor centre is a well-served local centre that provides local convenience requirements and some specialist retail. Outside the local centre key services such as a doctors and dentist are available, so that a review of the 2006 boundary may be appropriate. The catchment of Littlemoor is large, its current viability seems strong and it seems able to support current demand. The local centre is well linked to the town centre through a frequent bus service.



Loundsley Green Local Centre

Loundsley Green Local Centre is a Neighbourhood Centre.

The catchment is the residential area of Loundsley Green. It is located between Cuttholme Road and Pennine Way.

The facilities currently located within the local centre are

- **1 General Store**
- **1 Post Office**
- **3 Specific Retail and Services**
- **3 Food Restaurants / Takeaways / Providers**
- **1 Health and Community Facilities**
- **1 Hair and Beauty Salon**

The local centre is fully occupied and provides a good variety of services to the local catchment.

There are residential dwellings located above the ground floor retail units.

Loundsley Green Local Centre is 1,700 metres away from Chesterfield Town Centre and 1,500 metres away from the Holme Hall Local Service Centre that provides all the same services and more besides.

Local Centre Bus Services

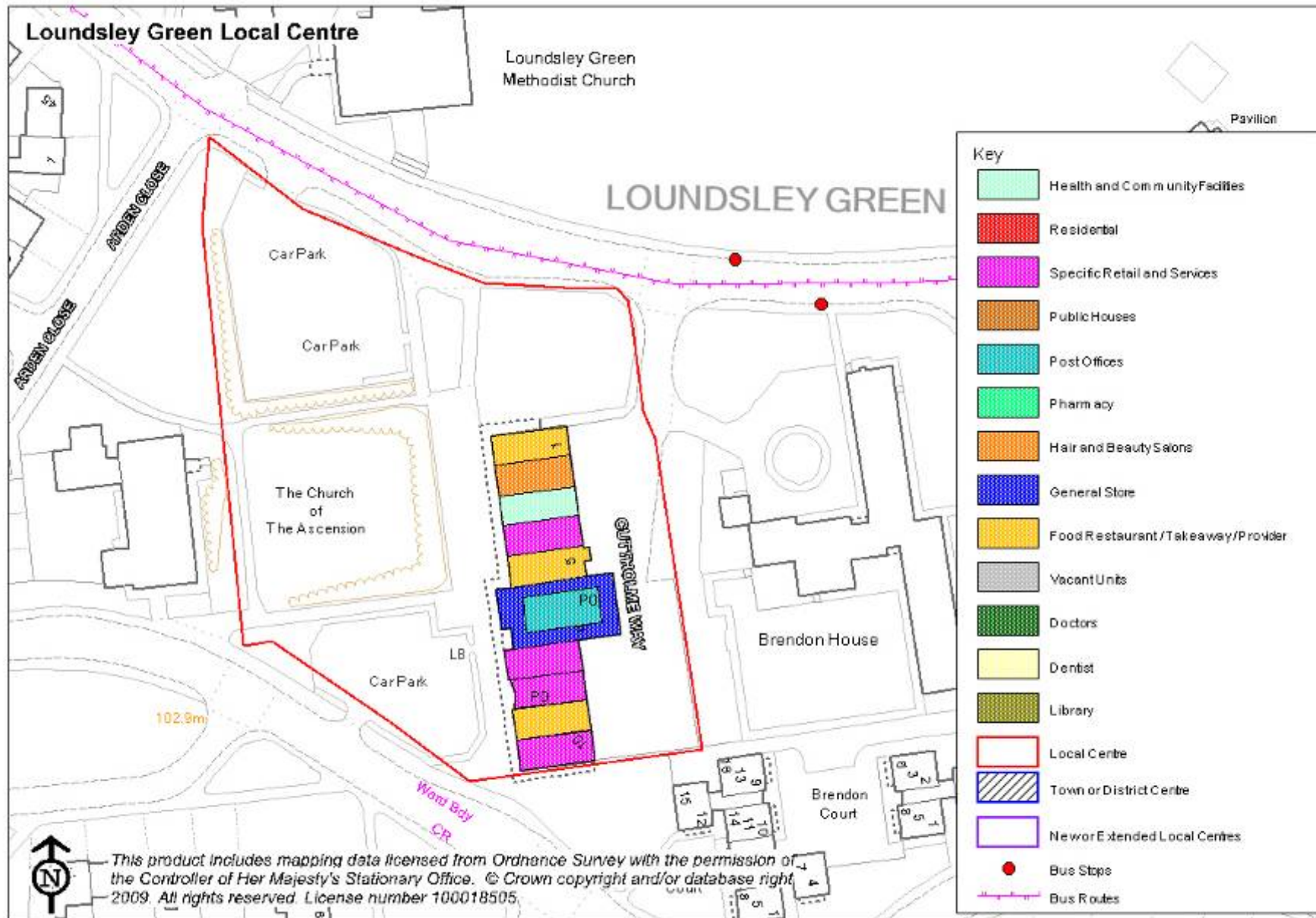


Monday – Friday after 9am

Bus Service	Frequency	Other Comments
2/2A	1 per hour	
39	7/8 per hour	

Conclusion

Loundsley Green is a fully occupied local centre which provides a convenience service to its catchment and is unaffected by the strength of the nearby Holme Hall local service centre. The local centre is well linked to Chesterfield Town Centre with 9/10 buses per hour that allows opportunity for the local catchment to do a larger wider shop in the town centre.



New Whittington Local Centre

New Whittington local centre warrants 'Local Centre' categorisation within the hierarchy.

It is located along the High Street within New Whittington. The catchment of New Whittington extends to areas of Old Whittington and Barrow Hill.

The facilities currently located within the local centre are:

- **2 General Stores**
- **1 Post Office**
- **6 Food Restaurant / Takeaways / Providers**
- **3 Specific Retail and Services**
- **1 Hair and Beauty Salon**
- **1 Public House**
- **1 Pharmacy**

Opposite the local centre there are 2 other public houses and a dental surgery.

There are 4 vacant units in the local centre, which is perhaps an indication of the impact of the recession on New Whittington

Within the local centre there are 19 residential dwellings.

New Whittington is 2,700 metres from Whittington Moor District Centre, 4,700 metres from Staveley Town Centre and 4,500 metres from Chesterfield Town Centre.

Local Centre Bus Services

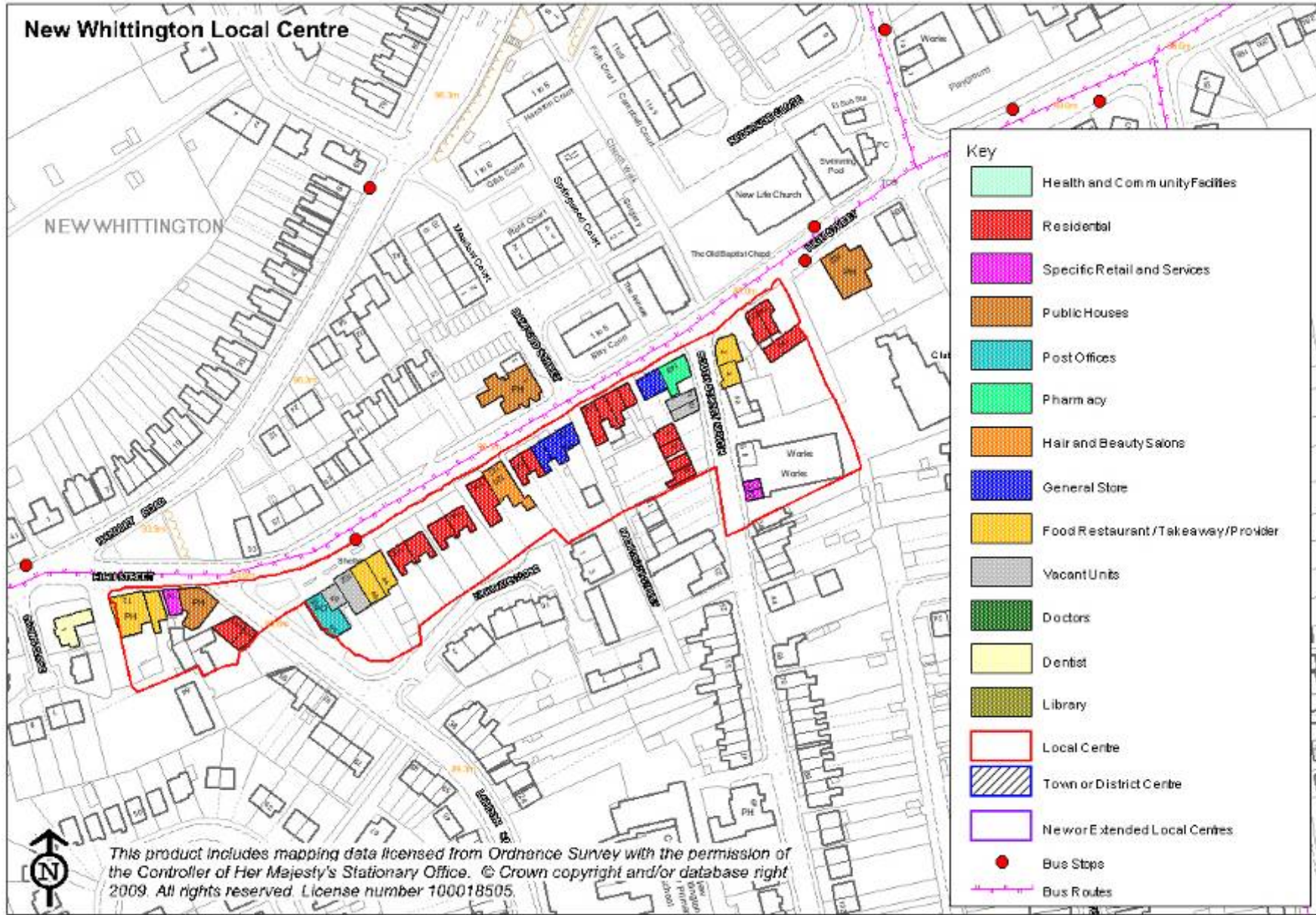


Monday – Friday after 9am

Bus Service	Frequency	Other Comments
25	4 per hour	
50/50A	2 per hour	

Conclusion

New Whittington is one of the larger local centres within the borough. It has a large catchment area that serves its immediate neighbourhood and, to some extent, adjoining areas of Old Whittington and Barrow Hill. It is served by frequent bus services between Sheffield and Chesterfield Town Centre. The centre provides a variety of services beyond the basic level of 'local convenience shopping'. At the time of survey the number of vacant premises suggests that the vitality of the local centre may be somewhat threatened. Because of the variety of services and facilities that are currently provided, however, it is still felt to be sustainable.



Newbold Local Centre

Newbold Local Centre is spread over three frontages at different points along Newbold Road.

The catchment of the local centre is mainly the immediate neighbourhood of Newbold, but it also draws in some passing trade, particularly at the Tesco Express which adjoins a petrol station.

The facilities currently located within the local centre are:

- **2 General Stores**
- **2 Hair and Beauty Salons**
- **6 Food Restaurant / Takeaways / Providers**
- **1 Specific Retail and Services**
- **1 Health and Community Facility**

Within the local centre there are 10 residential units, beyond the local centre boundary there are 2 public houses.

There are no vacant units in the local centre.

Newbold Local Centre is 1,800 metres from Chesterfield Town Centre and 1,800 metres from Whittington Moor District Centre.

Local Centre Bus Services



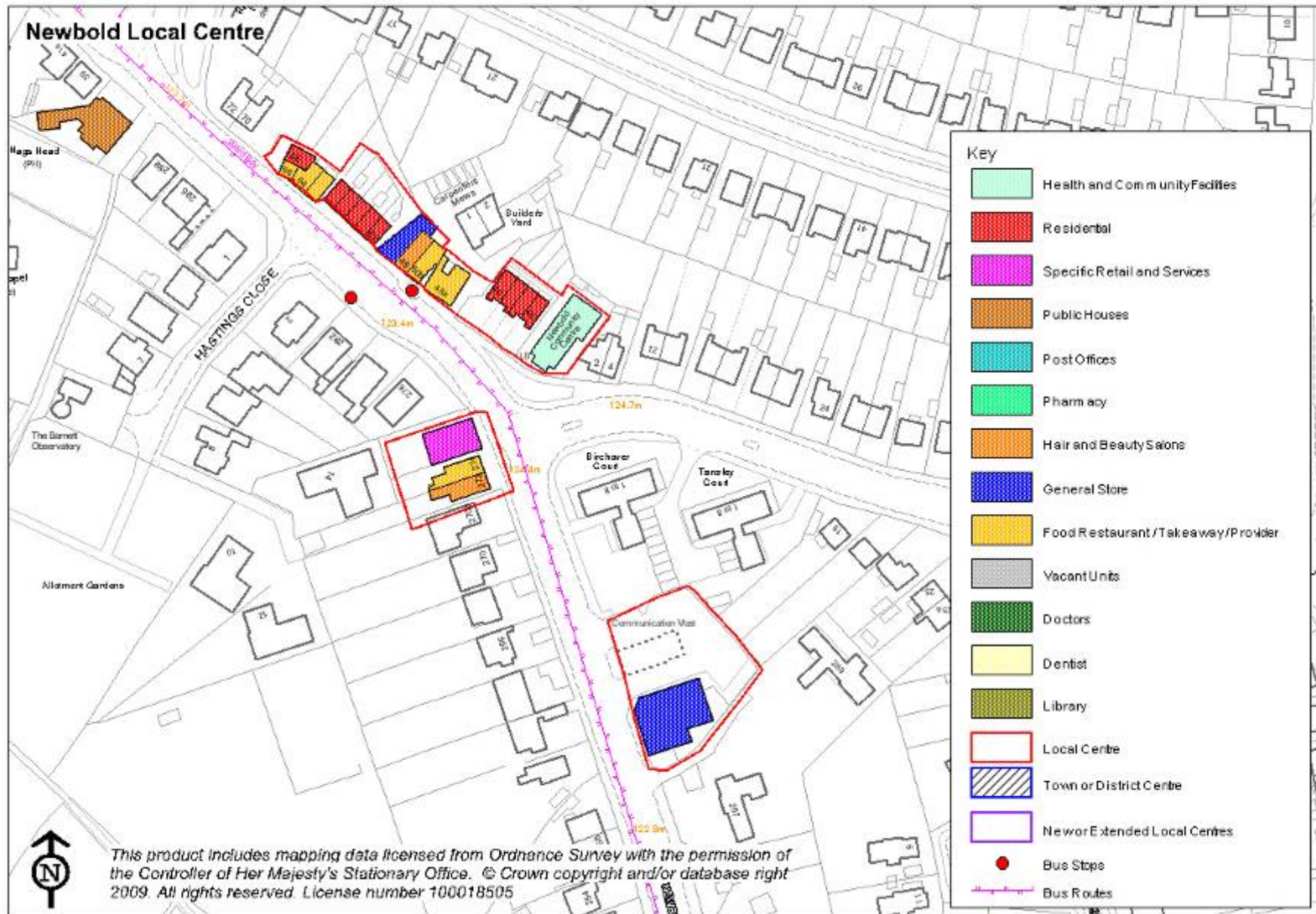
Monday – Friday after 9am

Bus Service	Frequency	Other Comments
10	6 per hour	
33	1 per hour	From 23 rd July 2011 service to be withdrawn
89	1 per hour	

Conclusion

Newbold Local centre is local centre that provides local services and convenience to local residents. This has been further expanded with the arrival of the Tesco Express outlet that has developed on the petrol station site. A significant number of units are restaurants and takeaways providing hot food. The good public transport links to Chesterfield Town Centre mean that a wide range of further services are readily available.

This local centre appears well-used and viable at the moment, probably not in need of additional new population locally to boost trade. Due to proximity of Littlemoor Local Centre and Chesterfield Town Centre with their range of services, further expansion of this local centre would not be necessary. A possible redrawing of the boundary would pick up adjoining units and facilities which already exist.



Old Whittington Local Centre

Old Whittington is substantial enough to be ranked as a 'Local Centre' in the hierarchy.

The local centre is located on Whittington Hill within Old Whittington. The catchment of the local centre is predominantly from Old Whittington as the larger local centre of New Whittington and the district centre of Whittington Moor are in close proximity.

The facilities currently located within the local centre are:

- **1 General Store**
- **1 Post Office**
- **4 Specific Retail and Services**
- **1 Pharmacy**
- **1 Hair and Beauty Salon**
- **1 Food Restaurant / Takeaway / Provider**

Opposite the local centre boundary there is a Public House.

There is 1 vacant unit within the local centre.

The local centre has 4 residential units within its current.

Old Whittington Local Centre is 3,300 metres from Chesterfield Town Centre and 1,100 metres from Whittington Moor District Centre.

Local Centre Bus Services



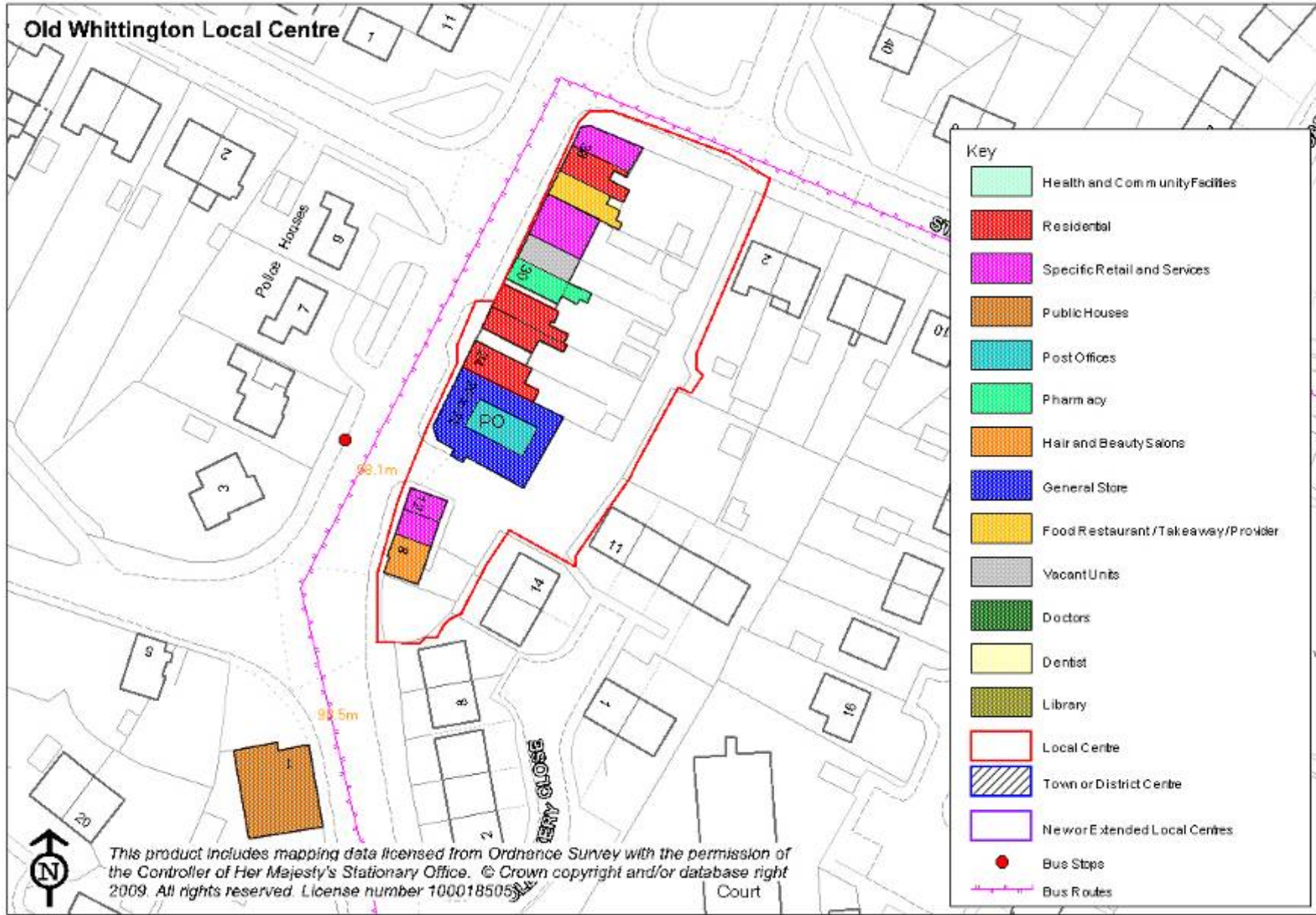
Monday – Friday after 9am

Bus Service	Frequency	Other Comments
25	4 per hour	
50/50A	2 per hour	

Conclusion

Old Whittington is a medium sized local centre with services that provide a basic local centre function. The centre is sustainable, in that it served by public transport route running between Chesterfield Town Centre and Sheffield City Centre. The local centre is also able to cater for some passing trade, since it has limited car parking to the rear of the retail units. The vitality of the centre is considered to be strong, as all but one of the units are occupied.

This local centre appears well-used and viable at the moment, probably not in need of additional new population locally to boost trade. Due to proximity of New Whittington Local Centre, Whittington Moor District Centre with their wider range of services, further expansion of this local centre would not be necessary. A possible redrawing of the boundary would pick up adjoining units and facilities which already exist.



Walton Local Centre

A 'Neighbourhood Centre' located between the Walton Hall Estate and the Walton Park Estate between Breckland Road and Moorland View Road.

It was designated within the Replacement Chesterfield Borough Council Local Plan (adopted 2006) under policy SHC 2 Provision of New or Extended Local Centres, there have not been any extensions or new provision in the plan period since adoption.

The catchment of the local centre is from within the Walton Hall Estate and the Walton Park Estate, as well as an area outside the borough within the district of North East Derbyshire. It is localised due the proximity of other local centre and larger district and town centres

Walton Local Centre has the following facilities:

- **1 General Store**
- **1 Hair and Beauty Salons**
- **1 Post Office**
- **1 Food Restaurant / Takeaway / Provider**

There is 1 vacant unit within the local centre.

Walton Local Centre is located 1,100 metres from the Chatsworth Road District Centre and 2,400 metres from Chesterfield Town Centre.

Local Centre Bus Services



Monday – Friday after 9am

Bus Service	Frequency	Other Comments
2/2A	2 per hour	
80	2 per hour	

Conclusion

Walton Local Centre is a neighbourhood centre that provides the immediately adjoining housing areas with basic local convenience shopping. Frequent bus services link the centre with Chesterfield Town Centre. The vitality of the local centre is intact and it appears viable for it to continue to serve the local catchment. Further local needs can be met in the Chatsworth Road District Centre and Chesterfield Town Centre, both a short walk, bus ride, cycle or car journey away.



